

FOR LEASE > RETAIL

# ACE PLAZA

61-109 WEST LONG LAKE ROAD | TROY, MICHIGAN



## SIGNALIZED ENTRANCE WITH EASY ACCESS

### > PROPERTY HIGHLIGHTS

- 1,785 Square Foot Space Available
- Traffic Counts: 22,000 On Long Lake Road  
18,000 On Livernois
- Join: ACE Hardware, Northridge Cleaners, Punjab Sweets Cuisine, Carly's Salon & New Breakaway Deli

### > DEMOGRAPHICS

	1 MILE	3 MILE	5 MILE
POPULATION	6,007	71,022	226,213
AVG. INCOME	\$114,059	\$118,673	\$104,308
HOUSEHOLDS	2,162	26,891	93,080

**COLLIERS INTERNATIONAL**

2 Corporate Drive | Suite 300

Southfield, Michigan 48076

For More Information Call:

**THOMAS WARDLOW**

PHONE 248 540 1000 EXT 1642

EMAIL [thomas.wardlow@colliers.com](mailto:thomas.wardlow@colliers.com)



[colliers.com/detroit](http://colliers.com/detroit)



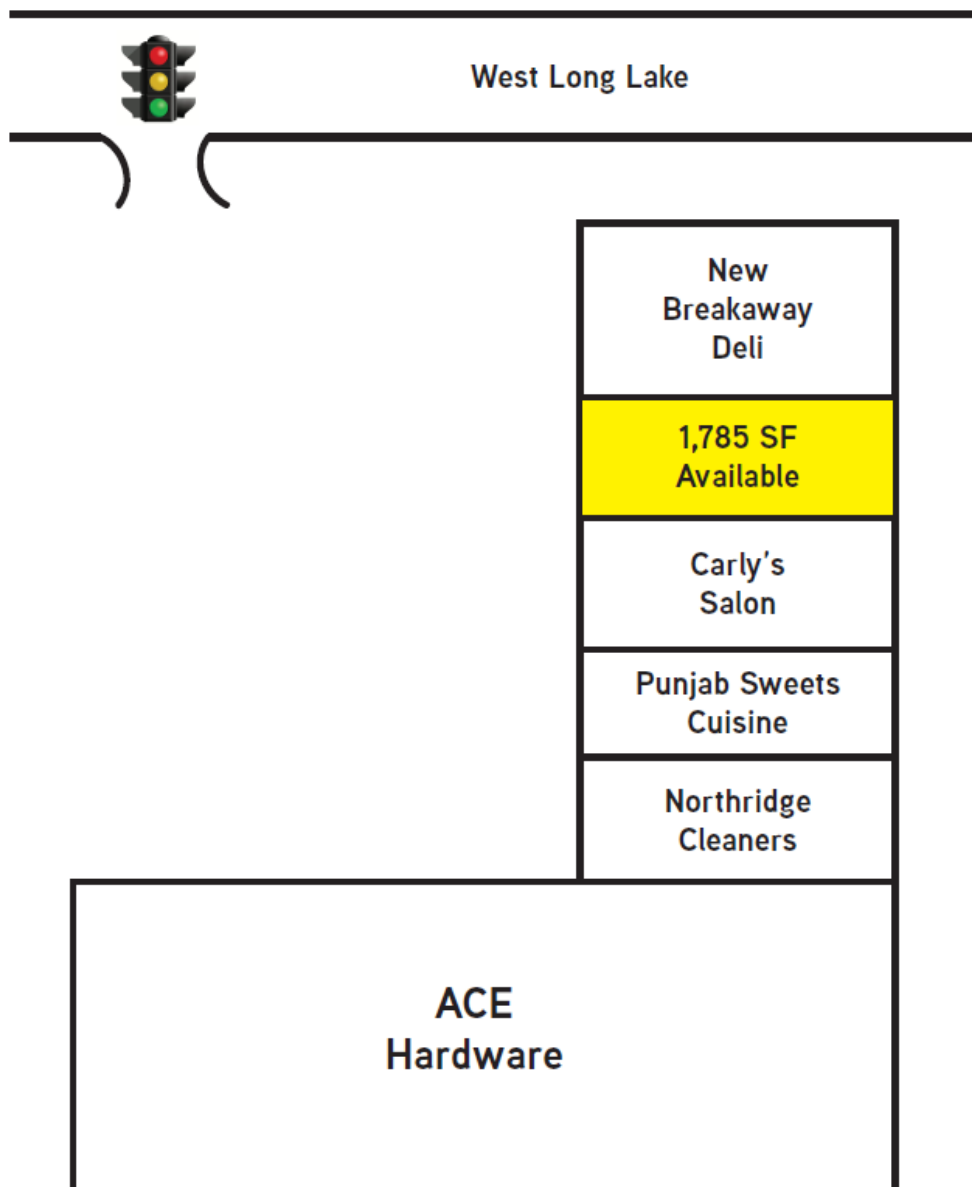
FOR LEASE > RETAIL

# ACE PLAZA

61-109 WEST LONG LAKE ROAD | TROY, MICHIGAN



## > SITE PLAN



THOMAS WARDLOW

PHONE 248 540 1000 EXT 1642

EMAIL [thomas.wardlow@colliers.com](mailto:thomas.wardlow@colliers.com)



COLLIERS INTERNATIONAL

2 Corporate Dr. | Suite 300  
Southfield, Michigan 48076



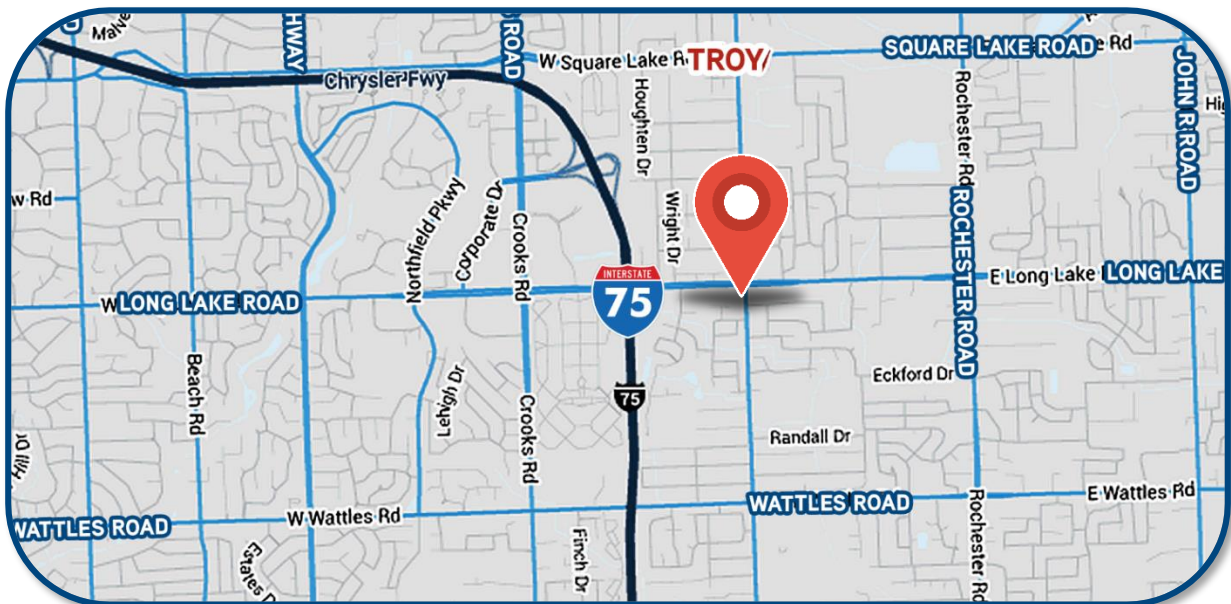
FOR LEASE > RETAIL

# ACE PLAZA

61-109 WEST LONG LAKE ROAD | TROY, MICHIGAN



## > BIRD'S EYE VIEW & LOCATION MAP



**THOMAS WARDLOW**

PHONE 248 540 1000 EXT 1642

EMAIL [thomas.wardlow@colliers.com](mailto:thomas.wardlow@colliers.com)



**COLLIERS INTERNATIONAL**

2 Corporate Dr. | Suite 300  
Southfield, Michigan 48076



FOR LEASE > RETAIL

# ACE PLAZA

61-109 WEST LONG LAKE ROAD | TROY, MICHIGAN



## > PROPERTY PHOTOS



**THOMAS WARDLOW**

PHONE 248 540 1000 EXT 1642

EMAIL [thomas.wardlow@colliers.com](mailto:thomas.wardlow@colliers.com)



**COLLIERS INTERNATIONAL**

2 Corporate Dr. | Suite 300  
Southfield, Michigan 48076



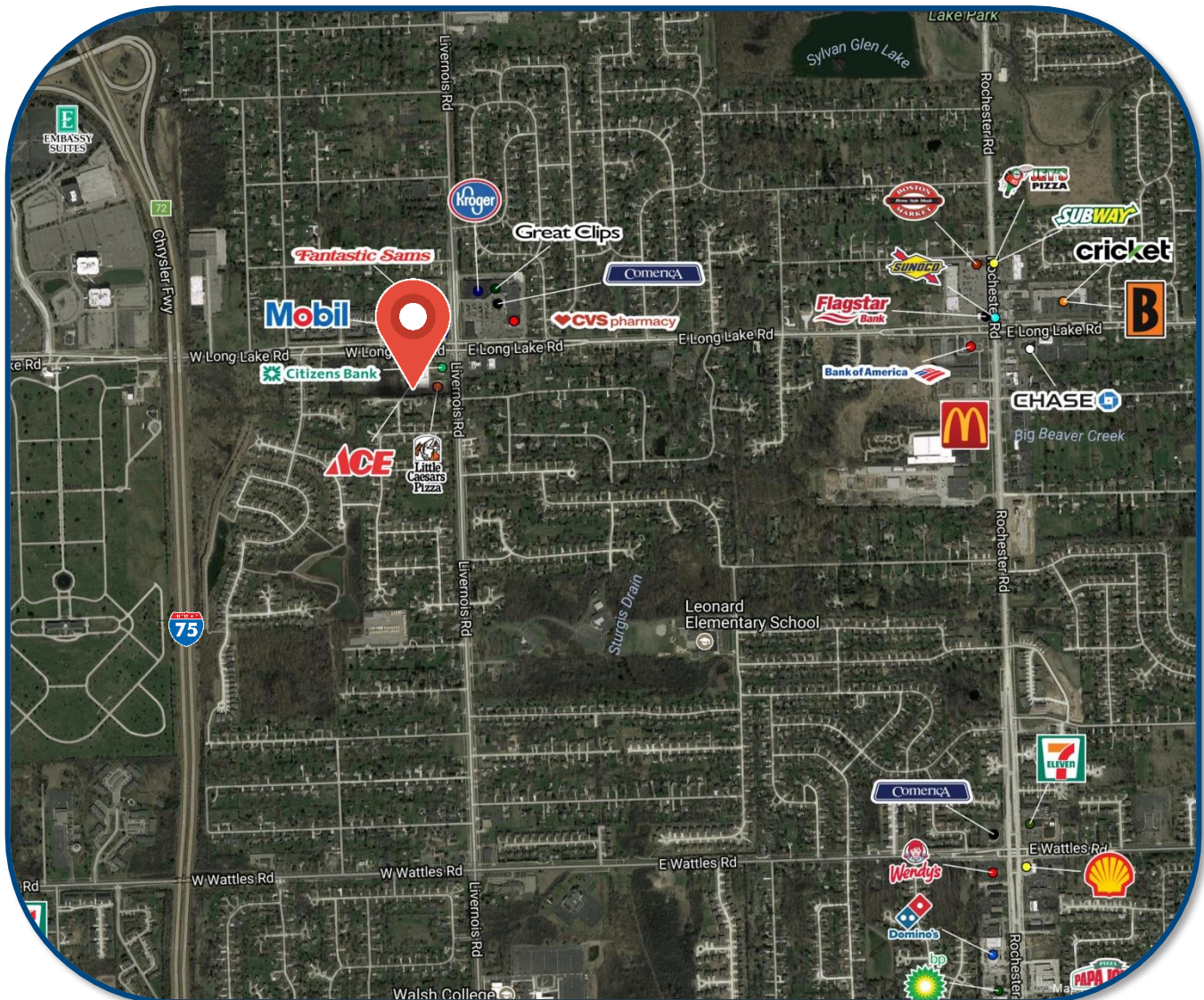
FOR LEASE > RETAIL

# ACE PLAZA

61-109 WEST LONG LAKE ROAD | TROY, MICHIGAN



## > AREA MERCHANT MAP



THOMAS WARDLOW

PHONE 248 540 1000 EXT 1642

EMAIL [thomas.wardlow@colliers.com](mailto:thomas.wardlow@colliers.com)



COLLIERS INTERNATIONAL

2 Corporate Dr. | Suite 300  
Southfield, Michigan 48076

# SUMMARY PROFILE

2000-2010 Census, 2017 Estimates with 2022 Projections

Calculated using Weighted Block Centroid from Block Groups



Lat/Lon: 42.5908/-83.1505

RS1

61-109 W Long Lake Rd

Troy, MI 48098

1 mi radius

3 mi radius

5 mi radius

POPULATION	2017 Estimated Population	6,007	71,022	226,213
	2022 Projected Population	6,021	71,771	228,815
	2010 Census Population	5,967	68,252	217,236
	2000 Census Population	5,943	67,755	213,815
	Projected Annual Growth 2017 to 2022	-	0.2%	0.2%
	Historical Annual Growth 2000 to 2017	0.1%	0.3%	0.3%
	2017 Median Age	44.1	42.1	41.5
HOUSEHOLDS	2017 Estimated Households	2,162	26,891	93,080
	2022 Projected Households	2,227	27,904	96,525
	2010 Census Households	2,093	25,101	86,836
	2000 Census Households	2,042	24,167	84,304
	Projected Annual Growth 2017 to 2022	0.6%	0.8%	0.7%
	Historical Annual Growth 2000 to 2017	0.3%	0.7%	0.6%
RACE AND ETHNICITY	2017 Estimated White	73.0%	69.8%	76.3%
	2017 Estimated Black or African American	3.1%	4.6%	5.9%
	2017 Estimated Asian or Pacific Islander	21.6%	22.7%	14.8%
	2017 Estimated American Indian or Native Alaskan	0.3%	0.2%	0.2%
	2017 Estimated Other Races	2.0%	2.7%	2.9%
	2017 Estimated Hispanic	2.5%	2.5%	2.7%
INCOME	2017 Estimated Average Household Income	\$114,059	\$118,673	\$104,308
	2017 Estimated Median Household Income	\$99,943	\$102,548	\$86,147
	2017 Estimated Per Capita Income	\$41,062	\$44,969	\$42,958
EDUCATION (AGE 25+)	2017 Estimated Elementary (Grade Level 0 to 8)	1.8%	2.5%	3.4%
	2017 Estimated Some High School (Grade Level 9 to 11)	3.3%	2.6%	3.9%
	2017 Estimated High School Graduate	17.3%	13.8%	17.6%
	2017 Estimated Some College	16.0%	14.8%	17.6%
	2017 Estimated Associates Degree Only	6.9%	6.9%	7.4%
	2017 Estimated Bachelors Degree Only	28.3%	30.2%	27.6%
	2017 Estimated Graduate Degree	26.4%	29.3%	22.5%
BUSINESS	2017 Estimated Total Businesses	358	5,160	13,904
	2017 Estimated Total Employees	7,259	88,819	191,538
	2017 Estimated Employee Population per Business	20.3	17.2	13.8
	2017 Estimated Residential Population per Business	16.8	13.8	16.3

This report was produced using data from private and government sources deemed to be reliable. The information herein is provided without representation or warranty.