

AVAILABLE > OFFICE SPACE

Westgate Professional Building



4601 West 6th Street, Suite A, Lawrence, Kansas



Property Highlights

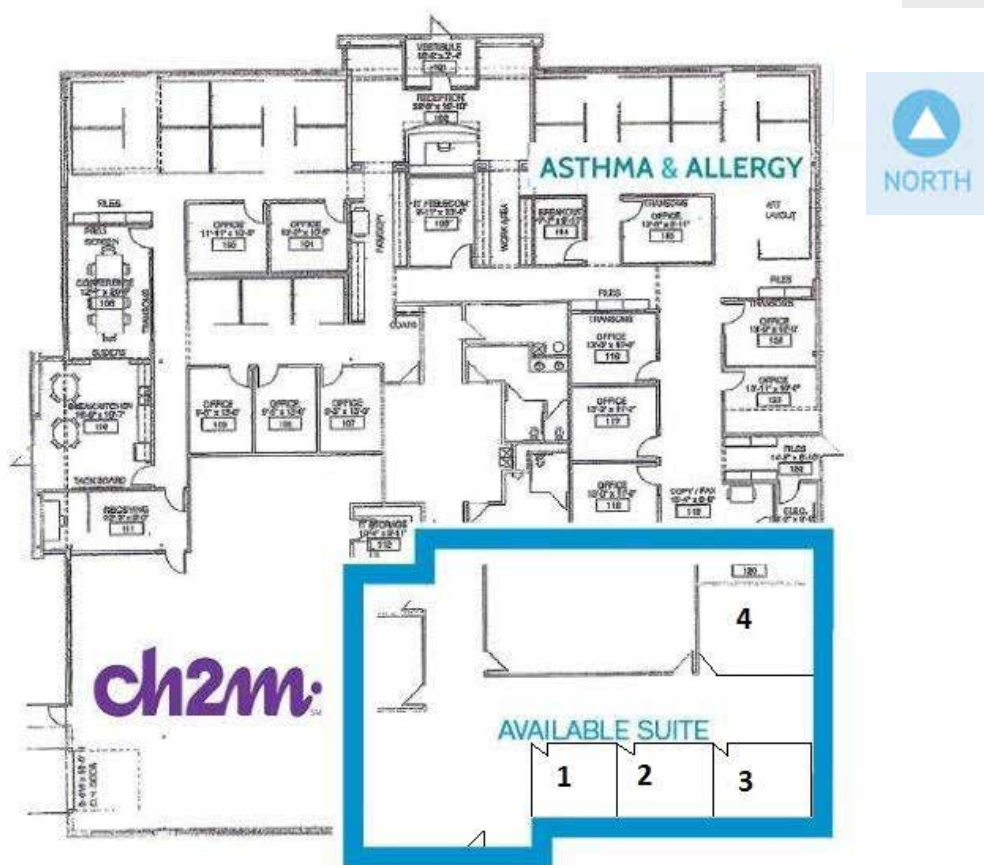
Westgate Professional Building, located in Northwest Lawrence, has 3,240 square feet of office space available for lease. The suite has south and east facing windows offering great natural light with four private offices. The suite also has a conference room, larger server/storage room, private entrance and dedicated parking. The Westgate Professional Building was built in 2000 and consists of 13,660 total square feet, featuring common area restrooms and monument signage facing 6th Street. The space is available for a lease rate of \$14/SF, NNN.

- > 3,240 SF available for lease
- > 13,660 total SF
- > Built in 2000
- > \$14/SF, NNN

KIRSTEN FLORY
+1 785 865 5100 | EXT. 108
LAWRENCE, KS
kirsten.flory@colliers.com

COLLIERS INTERNATIONAL
805 New Hampshire, Suite C
Lawrence, Kansas 66044
www.colliers.com

4601 West 6th Street > Floor Plan



4601 West 6th Street, Suite A > Interior Photos

