

FOR SUBLEASE > OFFICE SPACE

1100 WALNUT STREET

KANSAS CITY, MISSOURI



PROPERTY HIGHLIGHTS

- > Class A office building in downtown Kansas City
- > Spectacular downtown skyline views
- > Entire 25th floor
- > Available space: 23,377 SF
- > On-site amenities: Management ownership, workout facility, conference rooms, event room, restaurants and coffee shop
- > Year built: 1986
- > Walking distance to Power and Light District and KC Streetcar
- > Parking: 2.5/1,000
- > Lease rate: \$19.00 full-service (through September 30, 2021)

PHIL JAMES
+1 816 556 1125
KANSAS CITY, MO
phil.james@colliers.com

ROLLIE FORS
+1 816 556 1128
KANSAS CITY, MO
rollie.fors@colliers.com



FOR SUBLEASE > OFFICE SPACE

1100 WALNUT STREET

KANSAS CITY, MISSOURI

OFFICE SPACE

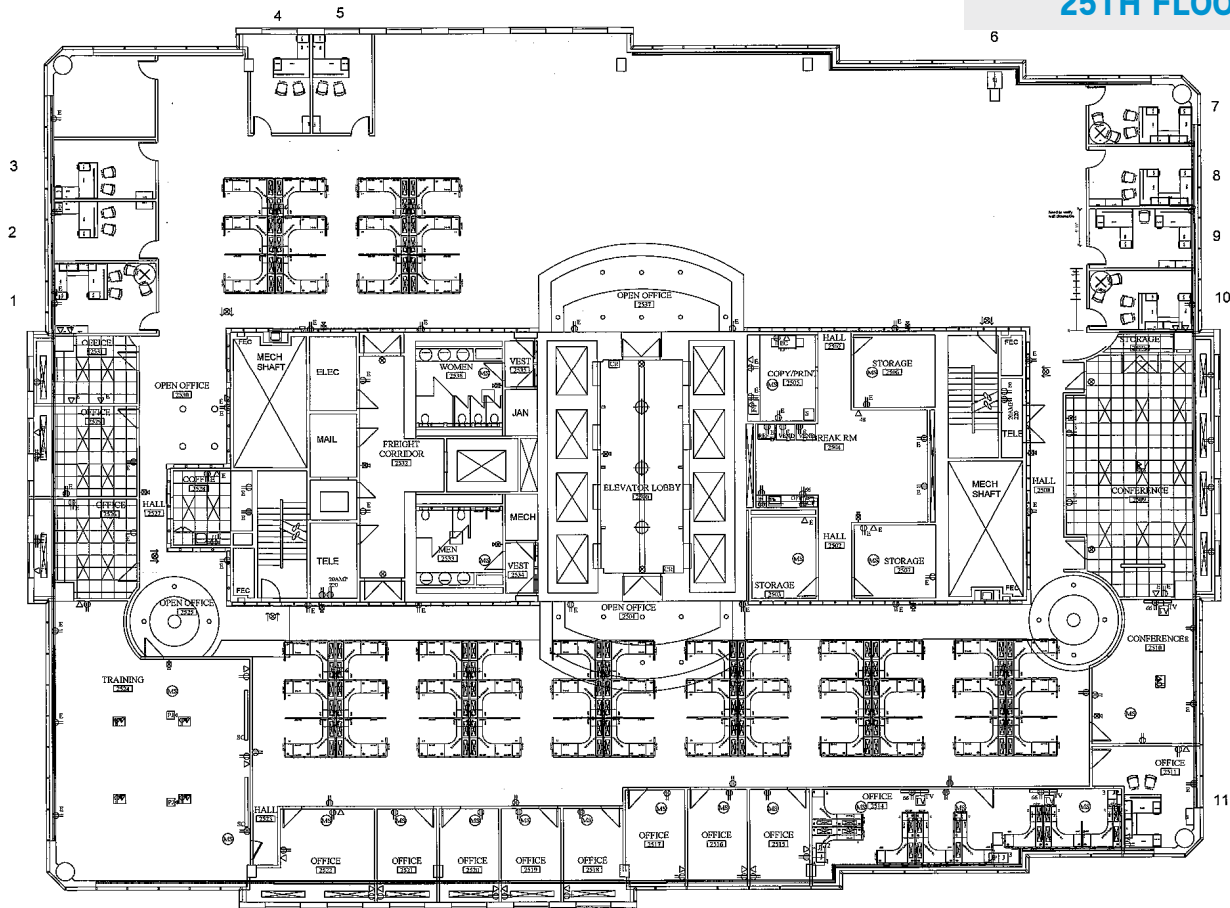


FOR SUBLEASE > OFFICE SPACE

1100 WALNUT STREET

KANSAS CITY, MISSOURI

25TH FLOOR PLAN



CONTACT

PHIL JAMES
+1 816 556 1125
KANSAS CITY, MO
phil.james@colliers.com

ROLLIE FORS
+1 816 556 1128
KANSAS CITY, MO
rollie.fors@colliers.com

This document has been prepared by Colliers International for advertising and general information only. Colliers International makes no guarantees, representations or warranties of any kind, expressed or implied, regarding the information including, but not limited to, warranties of content, accuracy and reliability. Any interested party should undertake their own inquiries as to the accuracy of the information. Colliers International excludes unequivocally all inferred or implied terms, conditions and warranties arising out of this document and excludes all liability for loss and damages arising there from. This publication is the copyrighted property of Colliers International and/or its licensor(s). ©2019. All rights reserved.

