



456 MONT GOMERY

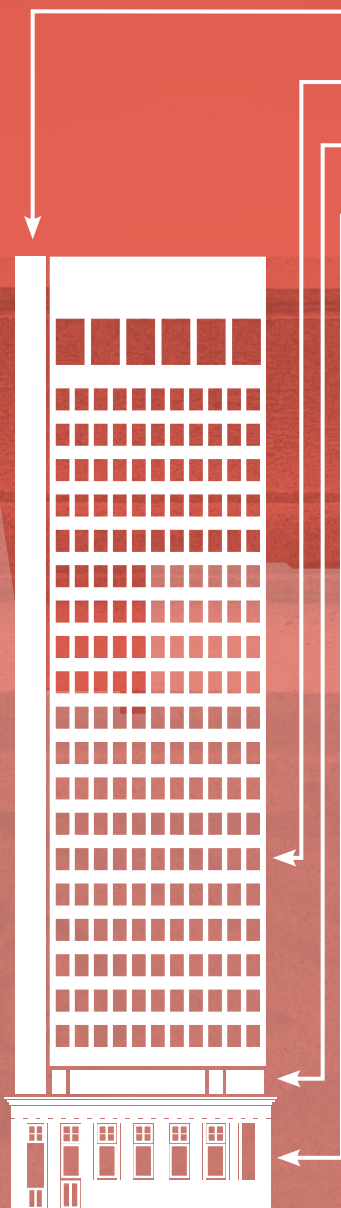
UNIQUE

FROM TOP TO BOTTOM

JIM SOBEL
LIC. 00965752
415 288 7804
jim.sobel@colliers.com

BRENDON KANE
LIC. 01884552
415 288 7868
brendon.kane@colliers.com

Colliers
INTERNATIONAL



SIDE CORE DESIGN - EFFICIENT OPEN FLOOR PLANS

BOUTIQUE COLUMN FREE FLOOR PLATES OFFERING TREMENDOUS IDENTITY TO 7,000 FT TENANTS

UNIQUE MODERNIST DESIGN ON TOP OF A CLASSIC TEMPLE FACADE AT STREET LEVEL

ELEGANT LOBBY WITH 24/7 SECURITY, NEW ELEVATOR CABS, AND
STATE-OF-THE-ART ELEVATOR SECURITY SYSTEM

THE BUILDING FEATURES

> PRESTIGIOUS TENANTS

FIRST BANK, ICON CLINICAL RESEARCH, CALIFORNIA BANK & TRUST
BEVERIDGE & DIAMOND, P.C., KWAN HENMI, VOGL & MEREDITH LLP,
CONSULATE GENERAL OF ISRAEL, EQUITY RISK PARTNERS, HERSH FAMILY LAW

> RETAIL SERVICES

FIRST BANK, GRACE IMAGE PHOTOGRAPHY STUDIO, MOZA, F.D. HAIRCUTS
BY LEO, SAN FRANCISCO GOLF PERFORMANCE CENTER, ROSS LAI DDS,
ADDITIONAL NEW RETAIL COMING SOON

> NEARBY PARKING:

550 KEARNY
550 CALIFORNIA
475 SANSOME



AVAILABILITIES

SUITE 500 - 7,133
AVAILABLE 9/1/2018

SUITE 950 - 2,541
AVAILABLE 9/1/2018

SUITE 1450 - 1,608
AVAILABLE 7/1/2018



SUITE 500. 5TH FLOOR. 7,133 SQUARE FEET.



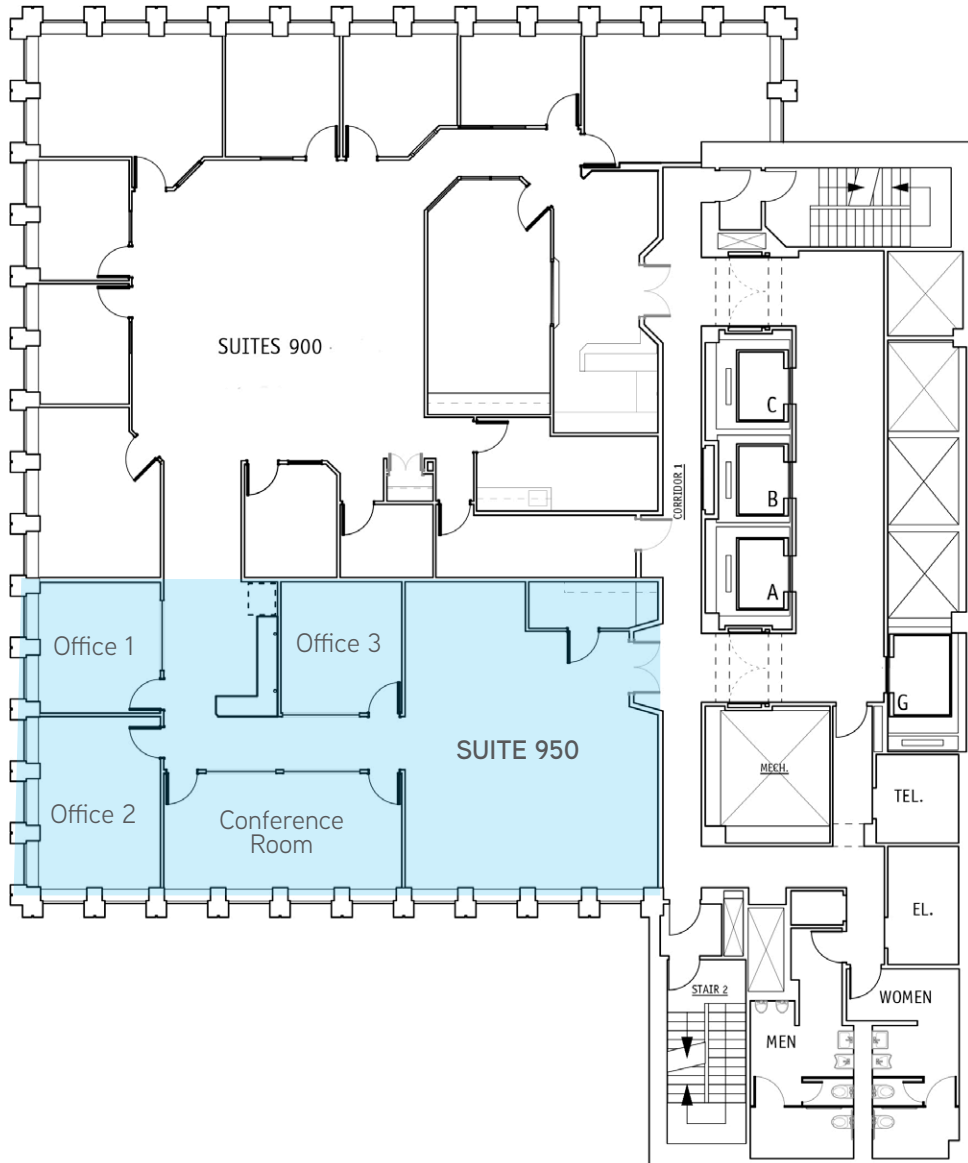
- › 1 large conference room
- › 2 small conference rooms
- › Large kitchen & break area
- › Gym/utility room
- › Large column free, efficient open area
- › Available 9/1/2018

JIM SOBEL
LIC. 00965752
415 288 7804
jim.sobel@colliers.com

BRENDON KANE
LIC. 01884552
415 288 7868
brendon.kane@colliers.com



SUITE 950. 9TH FLOOR. 2,541 SQUARE FEET.



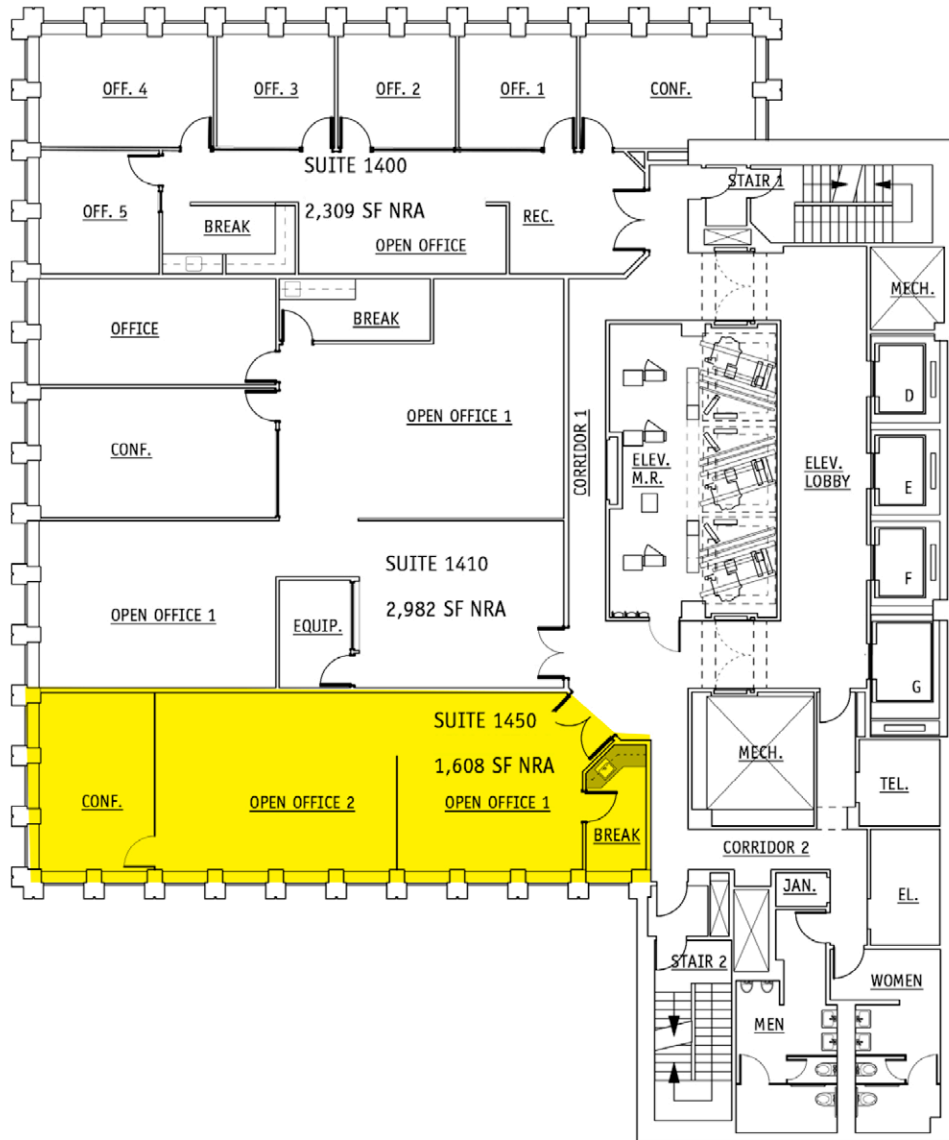
- › 3 private offices
- › 1 conference room
- › Break area & storage
- › Large open area
- › Available 9/1/2018

JIM SOBEL
LIC. 00965752
415 288 7804
jim.sobel@colliers.com

BRENDON KANE
LIC. 01884552
415 288 7868
brendon.kane@colliers.com



SUITE 1450. 14TH FLOOR. 1,608 SQUARE FEET.



- > Suite 1450
- > 1 conference room
- > 2 open offices
- > Break room
- > Amazing window-line
- > Available 7/1/2018

JIM SOBEL
LIC. 00965752
415 288 7804
jim.sobel@colliers.com

BRENDON KANE
LIC. 01884552
415 288 7868
brendon.kane@colliers.com





**SUP
ERC
ELL**

456 MONTGOMERY

Bank of America

salesforce

WELLS FARGO

**DODGE
AND COX**

YAHOO!
amazon

ORACLE

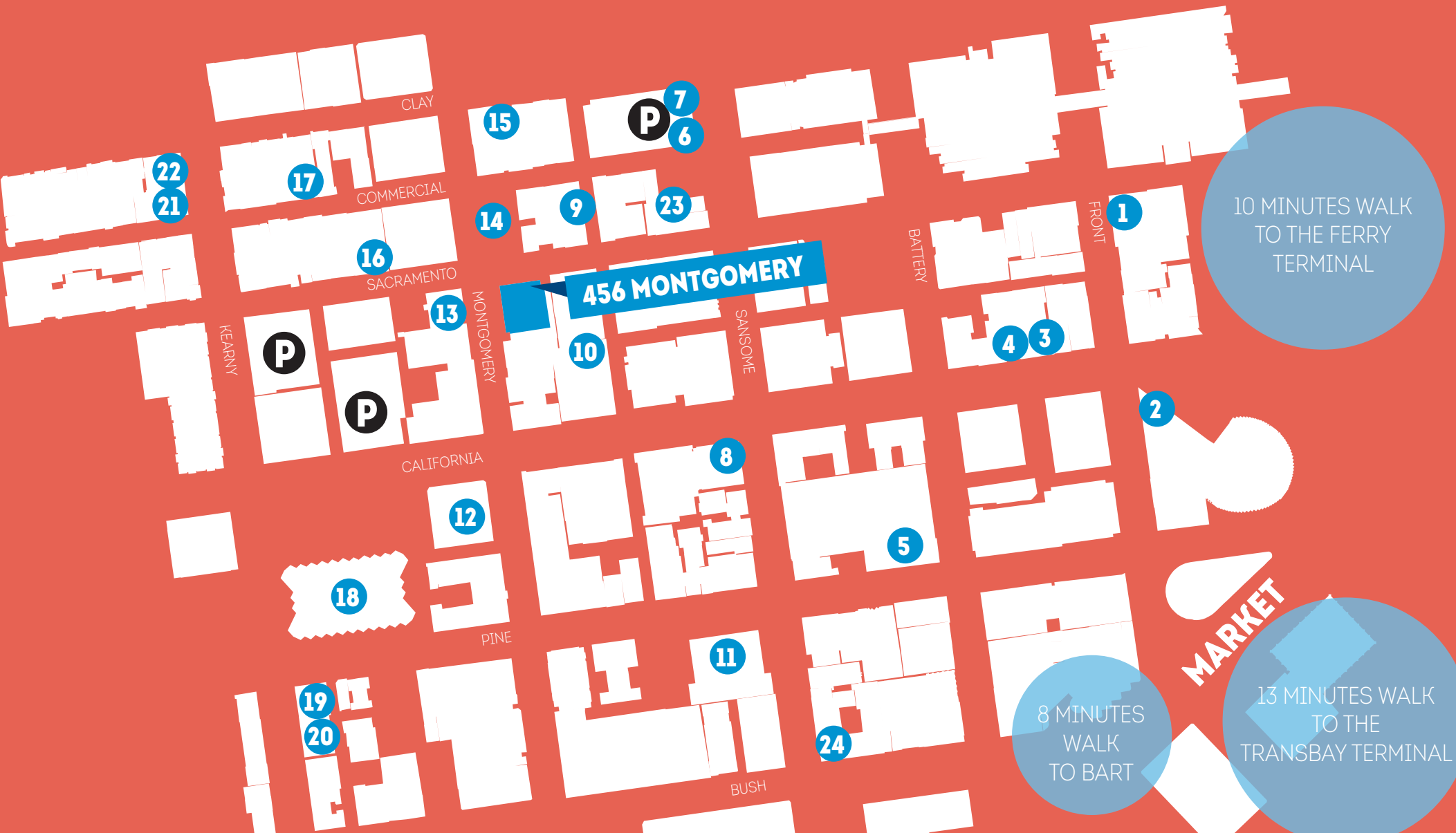
UnionBank



**MORRISON
FOERSTER**

MCKESSON

- | | | | | | |
|----------------|---------------|--------------------|-----------------|----------------------|-----------------------|
| 1 WALGREENS | 5 CHEZ FAYALA | 9 WAYFARE TAVERN | 13 CITIBANK | 17 CITY VIEW | 21 R&G LOUNGE |
| 2 PABU IZAKAYA | 6 MIXT GREENS | 10 WELLS FARGO | 14 WEXLERS | 18 FEDEX SHIP CENTER | 22 SUBWAY |
| 3 TADICH GRILL | 7 SUSHIRITTO | 11 EQUINOX | 15 STARBUCKS | 19 RAMEN UNDERGROUND | 23 IRISH TIMES |
| 4 PERBACCO | 8 CHASE BANK | 12 BANK OF AMERICA | 16 PALIO D'ASTI | 20 SUPER DUPER | 24 BLUE BOTTLE COFFEE |



456 MONTGOMERY

UNIQUE FROM TOP TO BOTTOM

JIM SOBEL

LIC. 00965752

415 288 7804

jim.sobel@colliers.com

BRENDON KANE

LIC. 01884552

415 288 7868

brendon.kane@colliers.com



This document has been prepared by Colliers International for advertising and general information only. Colliers International makes no guarantees, representations or warranties of any kind, expressed or implied, regarding the information including, but not limited to, warranties of content, accuracy and reliability. Any interested party should undertake their own inquiries as to the accuracy of the information. Colliers International excludes unequivocally all inferred or implied terms, conditions and warranties arising out of this document and excludes all liability for loss and damages arising there from. This publication is the copyrighted property of Colliers International and/or its licensor(s). ©2017. All rights reserved.