

SABAL PARK BUSINESS CENTER OFFICE SPACE OPPORTUNITY

24,851 SF AVAILABLE FOR LEASE OR PURCHASE



3812 COCONUT PALM DRIVE, TAMPA, FL 33619

BUILDING HIGHLIGHTS

Rental Rate: \$24.00/SF Full Service

Availability: Immediately

Total Premises: 24,851 SF

Parking: 4.59/1,000 SF

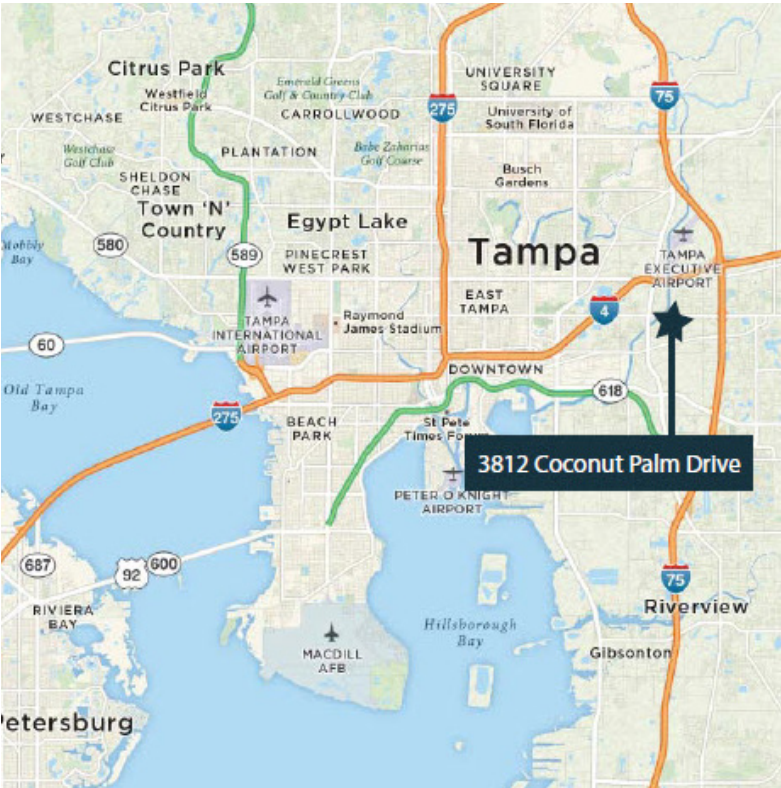
Rentable Area:	1 st Floor	12,425 SF
	2 nd Floor	12,425 SF

The second floor is completely built out with above-grade finishes.

Build out: The first floor shell offers flexibility and several demising options.

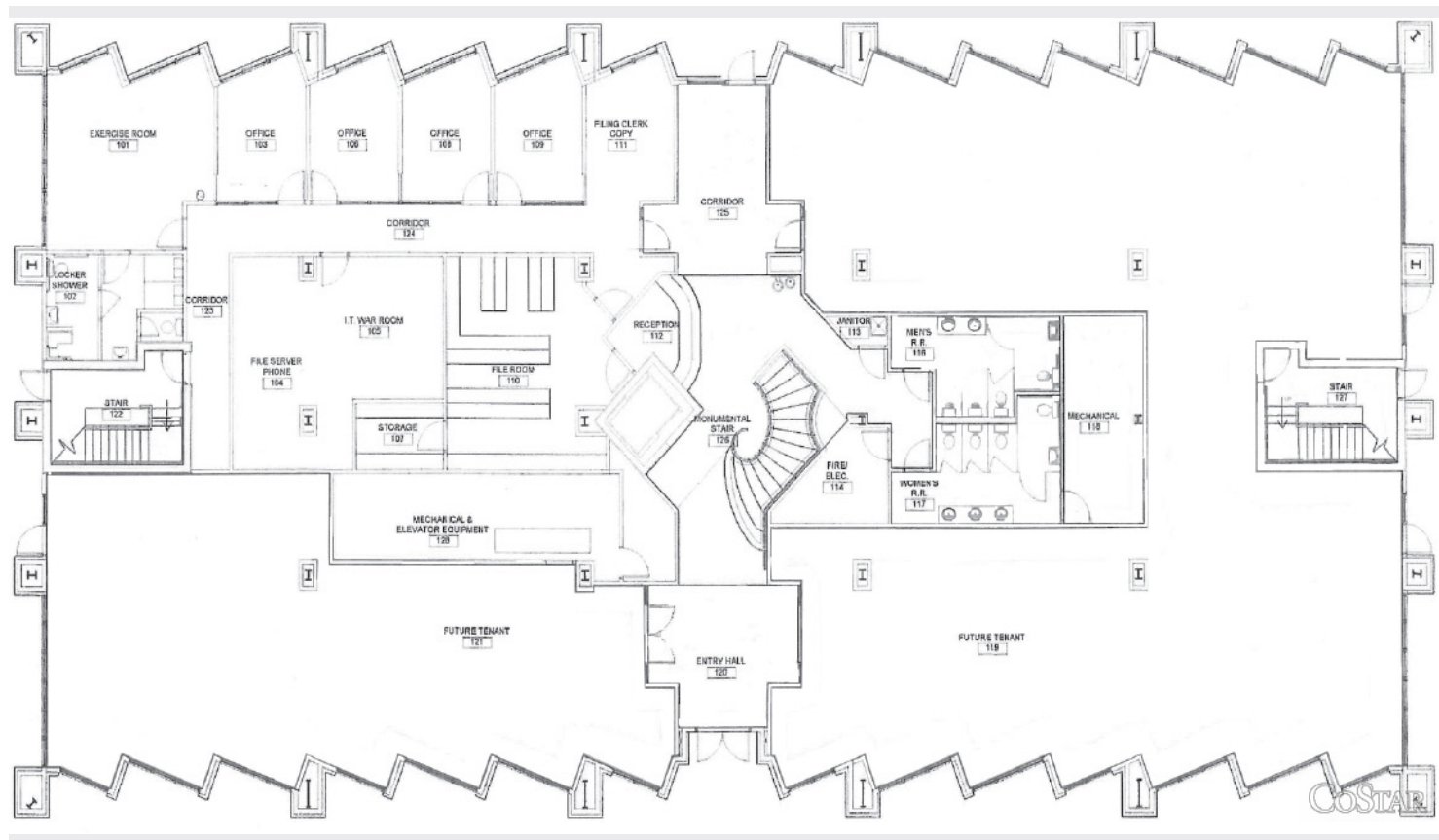
LOCATION

- Excellent visibility with 350 footage along the North side of Coconut Palm Drive
- Close Proximity to Interstate 4 and Interstate 75 as well as within eight minutes to Selmon Expressway and Interstate 275.



SABAL PARK BUSINESS CENTER OFFICE SPACE OPPORTUNITY

24,851 SF AVAILABLE FOR LEASE OR PURCHASE



For more information, please contact:

MIA JARRELL MCR, MBA
MAIN: 813 221 2290
DIRECT: 813 871 8539
mia.jarrell@colliers.com

COLLIERS INTERNATIONAL
4830 W. Kennedy Blvd., Suite 300
Tampa, FL 33609
813 221 2290
www.colliers.com

This document/email has been prepared by Colliers International for advertising and general information only. Colliers International makes no guarantees, representations or warranties of any kind, expressed or implied, regarding the information including, but not limited to, warranties of content, accuracy and reliability. Any interested party should undertake their own inquiries as to the accuracy of the information. Colliers International excludes unequivocally all inferred or implied terms, conditions and warranties arising out of this document and excludes all liability for loss and damages arising there from. This publication is the copyrighted property of Colliers International and /or its licensor(s). © 2017. All rights reserved. This communication is not intended to cause or induce breach of an existing listing agreement.