

FOR SALE OR LEASE >

# INTENSIVE INDUSTRIAL

12625 GREENFIELD ROAD | DETROIT, MICHIGAN



## 13.51 ACRE FENCED STORAGE YARD

### > PROPERTY HIGHLIGHTS

- Three Acre Minimum
- Zoned M4 Intensive Industrial
- Active CSX Rail Spur
- Located at the Intersection of I-96 and Greenfield Road
- Great Truck Yard/Truck Repair

**COLLIERS INTERNATIONAL**

2 Corporate Drive | Suite 300

Southfield, Michigan 48076

For More Information Call:

**CHRISTIAN HILL**

PHONE 248 540 1000 EXT 1628

EMAIL [christian.hill@colliers.com](mailto:christian.hill@colliers.com)

[colliers.com/detroit](http://colliers.com/detroit)



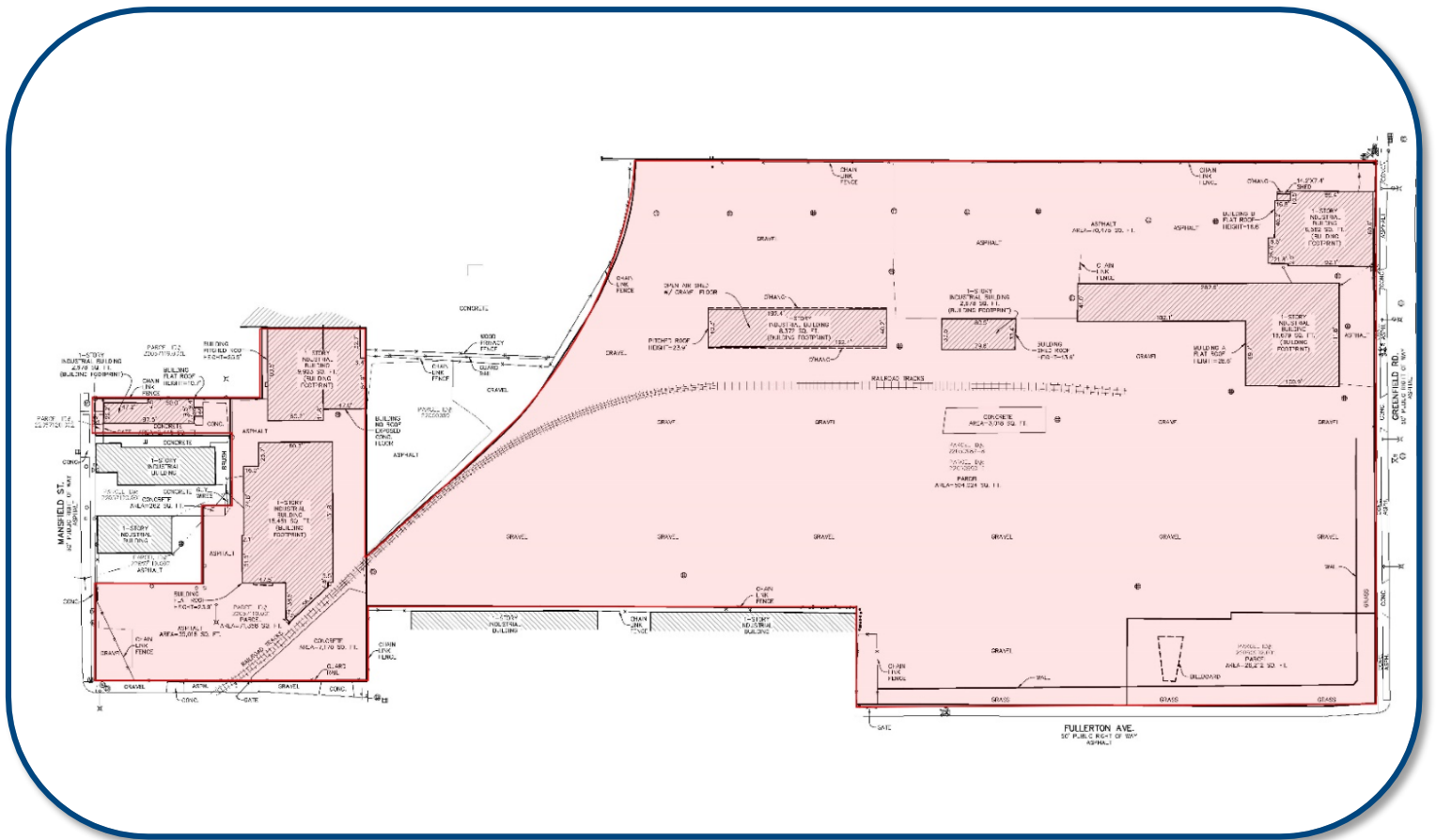
FOR SALE OR LEASE >

# INTENSIVE INDUSTRIAL

12625 GREENFIELD ROAD | DETROIT, MICHIGAN



## > SITE PLAN



CHRISTIAN HILL  
PHONE 248 540 1000 EXT 1628  
EMAIL [christian.hill@colliers.com](mailto:christian.hill@colliers.com)



COLLIERS INTERNATIONAL  
2 Corporate Dr. | Suite 300  
Southfield, Michigan 48076



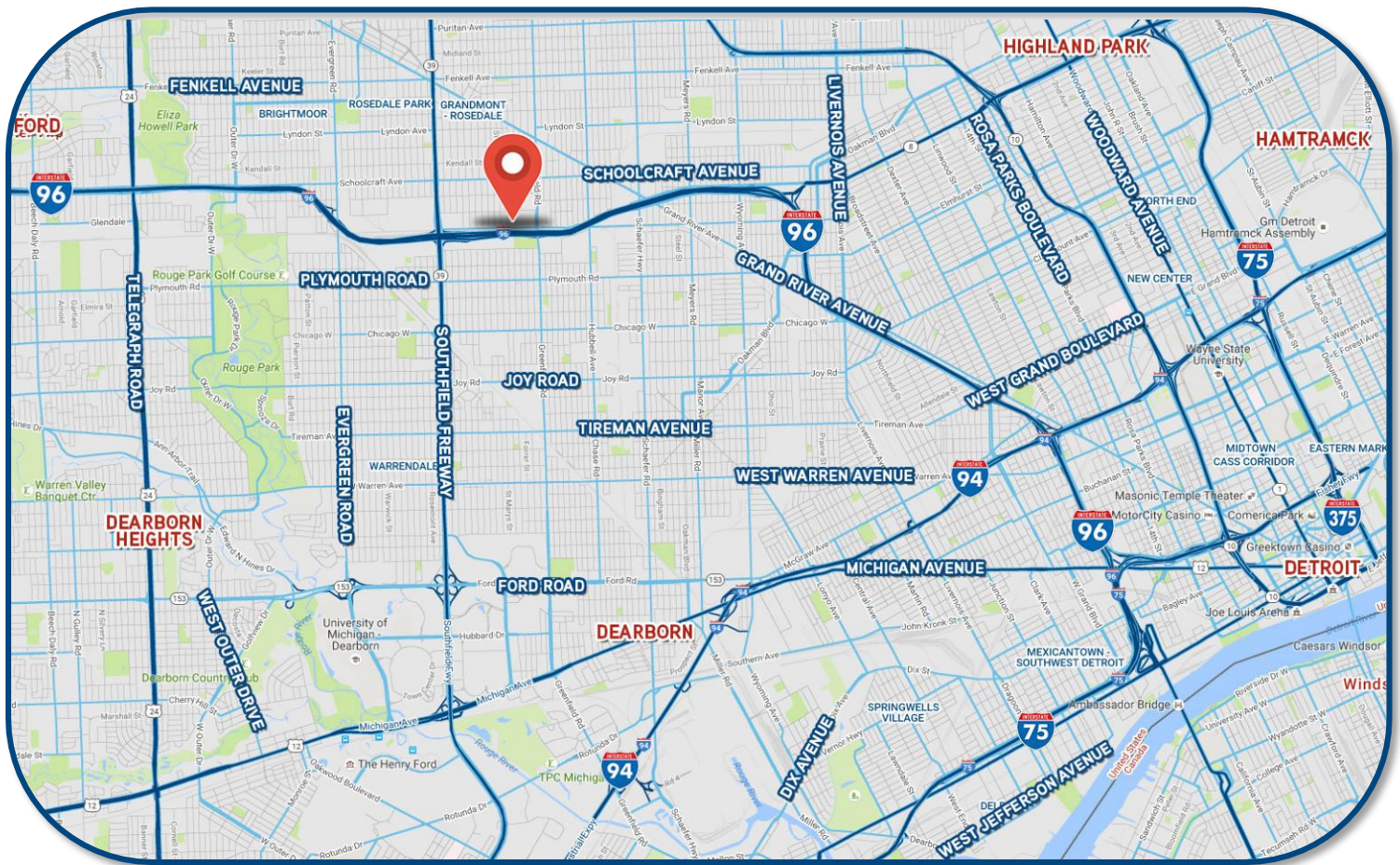
FOR SALE OR LEASE >

# INTENSIVE INDUSTRIAL

12625 GREENFIELD ROAD | DETROIT, MICHIGAN



## > LOCATION MAP



**CHRISTIAN HILL**  
PHONE 248 540 1000 EXT 1628  
EMAIL [christian.hill@colliers.com](mailto:christian.hill@colliers.com)



**COLLIERS INTERNATIONAL**  
2 Corporate Dr. | Suite 300  
Southfield, Michigan 48076



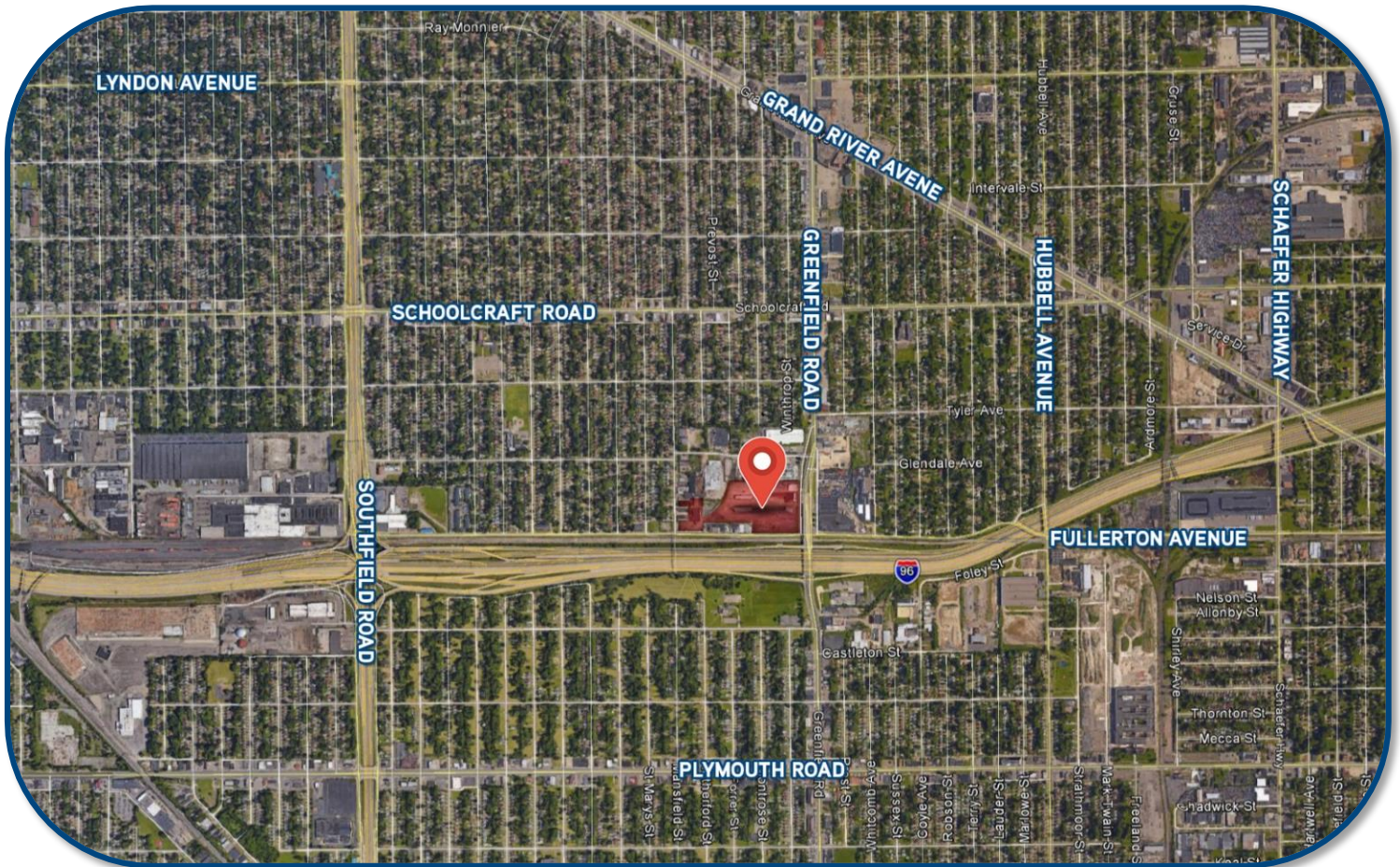
FOR SALE OR LEASE >

# INTENSIVE INDUSTRIAL

12625 GREENFIELD ROAD | DETROIT, MICHIGAN



## > AERIAL



**CHRISTIAN HILL**  
PHONE 248 540 1000 EXT 1628  
EMAIL [christian.hill@colliers.com](mailto:christian.hill@colliers.com)



**COLLIERS INTERNATIONAL**  
2 Corporate Dr. | Suite 300  
Southfield, Michigan 48076

# 12625 GREENFIELD ROAD

## DETROIT, MICHIGAN

### > BUILDING SPECS

Gross Acres:	13.51
Vacant Acres:	13.51
Min Available Acres:	3
Max Contiguous Acres:	13.51
Cranes:	None
Underhook:	N/A
Railroad:	Yes
Zoning:	M4 Intensive Industrial
Sub Type:	Heavy Industrial
County:	Wayne
Crossroad:	I-96 & Greenfield Road



### > FINANCIALS

Lease Rate: \$1,800.00 Per Acre Gross  
 Sale Price: \$1,600,000.00

### > HIGHLIGHTS

- Parcel ID: 22050987-8,22050990-1,22050992.001,22057119-120.002
- 13.51 Acre Fenced Storage Yard.
- The minimum acres that can be leased is three acres.
- Active CSX Rail Spur. CSX spur recently reactivated and repaired.
- Zoned M4 Intensive Industrial
- Located at the Intersection of I-96 and Greenfield Road
- Combination of pavement and packed gravel that is in great condition.
- Great rail served heavy industrial fenced yard.
- The property has covered sheds. Shop and office space is possible.

**CHRISTIAN HILL**

PHONE 248 540 1000 EXT 1628  
 EMAIL [christian.hill@colliers.com](mailto:christian.hill@colliers.com)



**COLLIERS INTERNATIONAL**

2 Corporate Dr. | Suite 300  
 Southfield, Michigan 48076