

FOR LEASE > WAREHOUSE SPACE

370 Crossways Park Drive

WOODBURY, NY



BUILDING DETAILS

Available Space:	+/- 7,000 SF	Ceiling Height:	13'-14'
Office Space:	10%	Power:	Ample
Loading:	2 Drive Ins	Heat:	Gas

Taxes:	Base year included
Asking Lease Price:	\$14.00 PSF/Gross

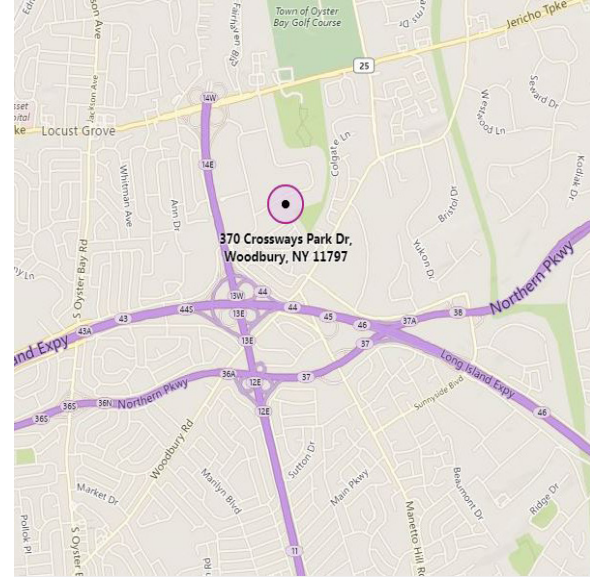
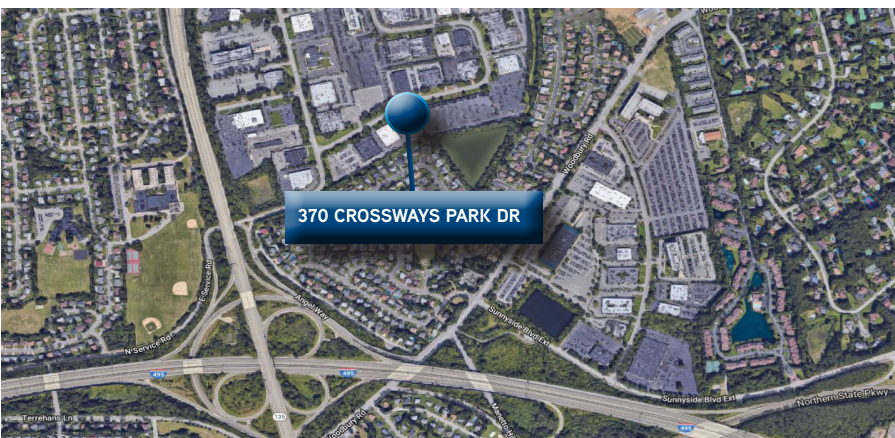
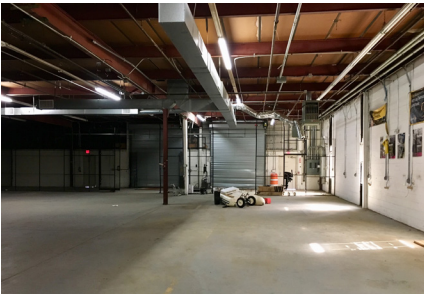
HIGHLIGHTS

- > Situated in Crossways Business Park
- > 10% office build out available
- > Available immediately
- > Utilities sub-metered
- > Easy access to Route 135, LIE, and Northern State Pkwy
- > Landlord occupied building
- > Good column spacing

FOR LEASE > WAREHOUSE SPACE

370 Crossways Park Dr

WOODBURY, NY



Exclusive Agents

JUSTIN MAIORANO

516 284 3448 | DIRECT DIAL

LONG ISLAND, NY

justin.maiorano@colliers.com

JASON MAIETTA

516 284 3410 | DIRECT DIAL

LONG ISLAND, NY

jason.maietta@colliers.com

COLLIERS INTERNATIONAL

1981 Marcus Ave, Suite E104

Lake Success, NY 11042

T. 516 328 6500 F. 516 328 6749

www.colliers.com

Although all information furnished regarding property for sale, rental or financing is from sources deemed reliable such information has not been verified and no express representation is made nor is any to be implied as to the accuracy thereof, and it is submitted subject to errors, omissions, change of price, rental or other conditions prior sale, lease or financing or withdrawal without notice.

