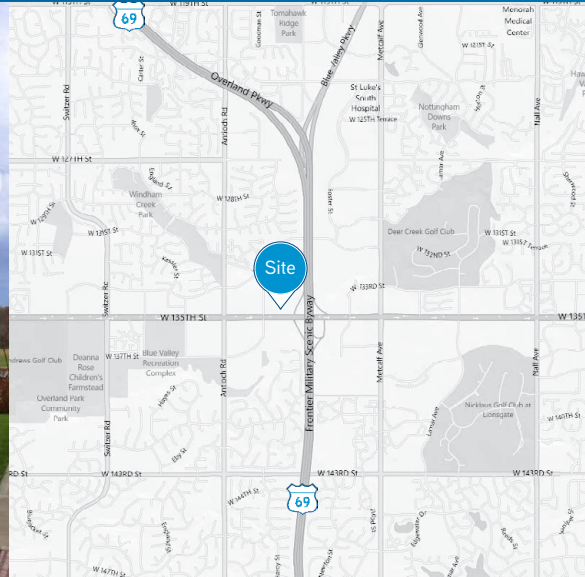


FOR SUBLEASE › OFFICE SPACE



Central Bank of the Midwest

7960 W 135TH STREET, OVERLAND PARK, KANSAS



Property Features

- › Highly visible location on 135th Street
- › Excellent access to 69 Highway
- › Extensive retail corridor with ample amount of amenities
- › Lobby exposure with three sides of glass
- › 3,776 RSF
- › Available immediately
- › \$19.50 / RSF
- › Sublease expiration of June 30, 2022

Contact Us

MATT STOVER
+1 816 556 1116
KANSAS CITY, MO
matt.stover@colliers.com

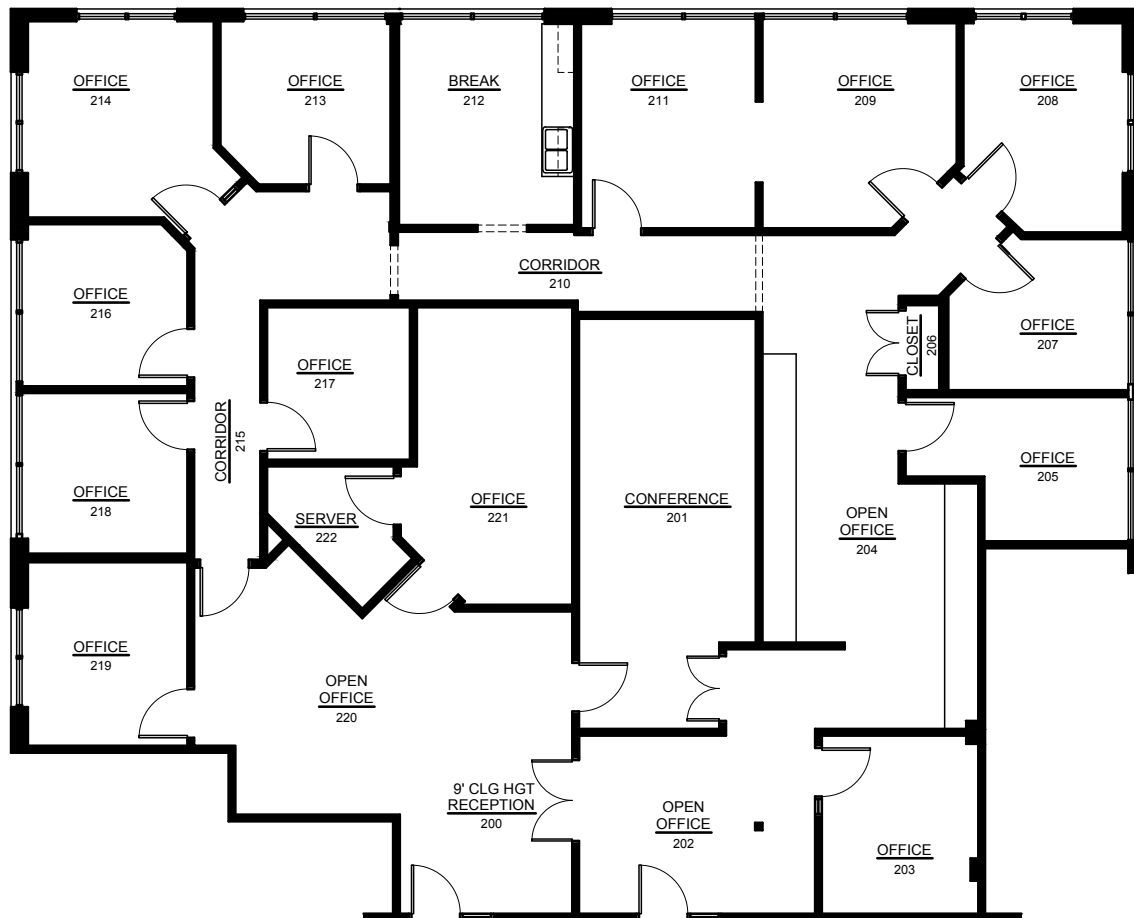
This document has been prepared by Colliers International for advertising and general information only. Colliers International makes no guarantees, representations or warranties of any kind, expressed or implied, regarding the information including, but not limited to, warranties of content, accuracy and reliability. Any interested party should undertake their own inquiries as to the accuracy of the information. Colliers International excludes unequivocally all inferred or implied terms, conditions and warranties arising out of this document and excludes all liability for loss and damages arising there from. This publication is the copyrighted property of Colliers International and/or its licensor(s). © 2017. All rights reserved.

COLLIERS INTERNATIONAL
4520 Main Street, Suite 1000
Kansas City, MO 64111
www.colliers.com

FOR SUBLEASE > OFFICE SPACE

Central Bank of the Midwest

7960 W 135TH STREET, OVERLAND PARK, KANSAS



MATT STOVER
+1 816 556 1116
KANSAS CITY, MO
matt.stover@colliers.com

