

OFFICE/RETAIL SPACE | FOR LEASE

# Puck's Alley

2600 SOUTH KING STREET, HONOLULU, HI 96826

Colliers  
INTERNATIONAL



## Property Description

Puck's Alley is a popular neighborhood retail and office center. The property is ideal for businesses looking for space close to the University/Moiliili area. Amenities include an extensive array of shops, restaurants, banks and service providers within walking distance.

## 2016 Demographics

	1 Mile	3 Mile	5 Mile
Population	61,860	223,559	319,302
Avg HH Income	\$67,785	\$85,250	\$88,475
Daytime Population	56,449	277,281	364,407

## Contact Us

Erin W.J. Mitsuyoshi (S)  
Retail Service Group & Shopping  
Center Division  
808 523 9713  
[erin.mitsuyoshi@colliers.com](mailto:erin.mitsuyoshi@colliers.com)

## Property Highlights

TMK:	(1) 2-8-24: 13, 30, 31 & 32	
Zoning:	BMX-3 (Business Mixed Use)	
Spaces Available	Date Available	Base Rent
T02A (465 SF)	Now	\$2.30 psf/mo
T10 (248 SF)	3/1/18	\$2.00 psf/mo
K205-207 (2,467 SF)	3/17/18	\$1.50 psf/mo
Operating Expenses:	\$0.97 - 1.00 psf/mo (estimated)	

## Traffic Volumes (24 hour period)

King Street between Coolidge & Hausten 27,016

COLLIERS INTERNATIONAL  
220 South King Street, Suite 1800  
Honolulu, HI 96813  
[www.colliers.com](http://www.colliers.com)



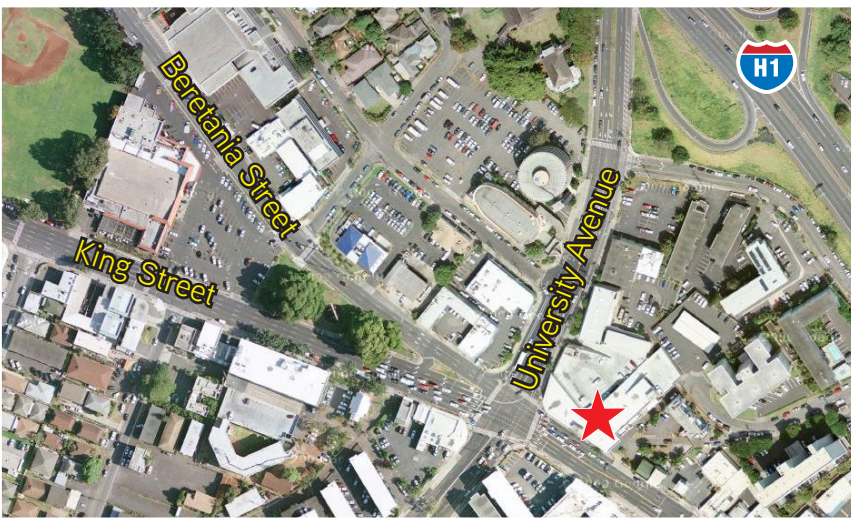
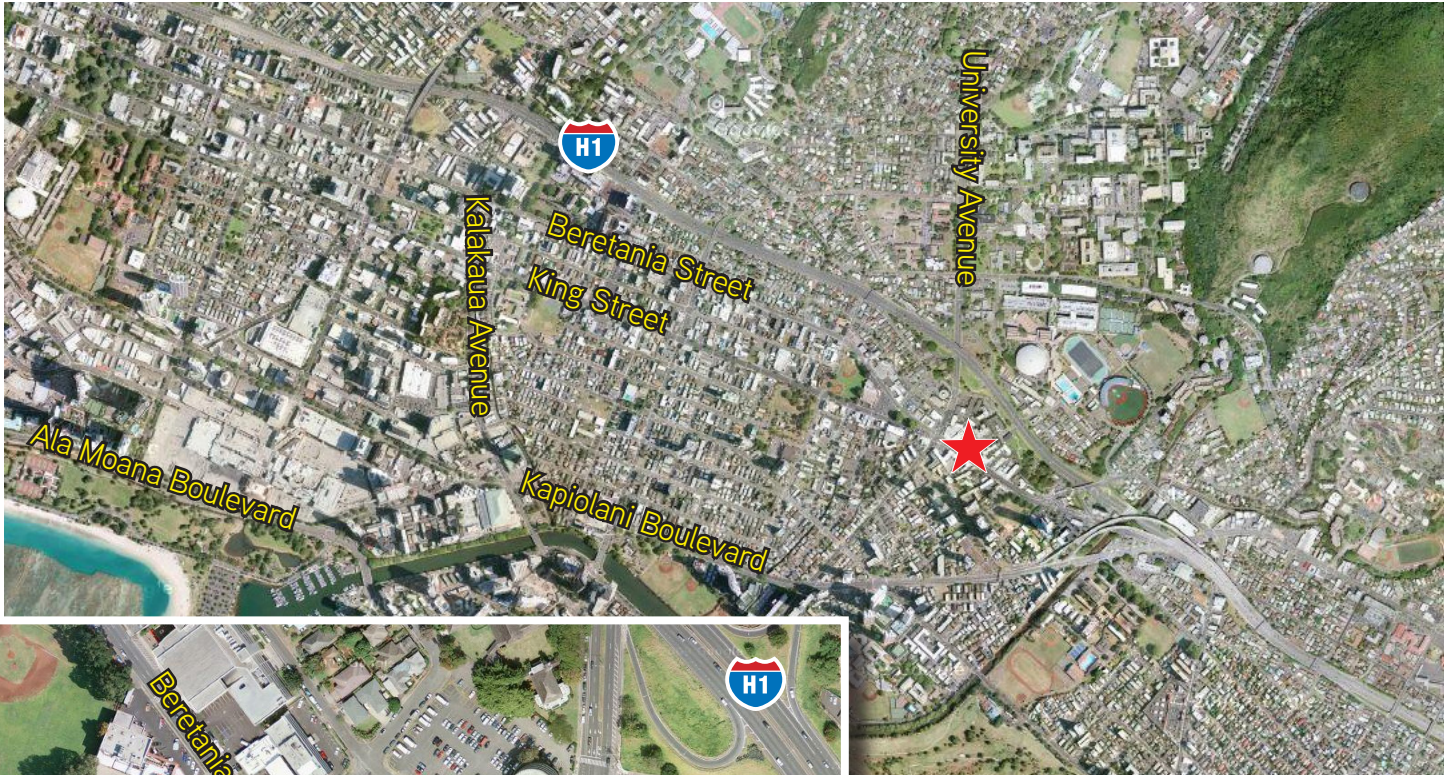
OFFICE/RETAIL SPACE | FOR LEASE

# Puck's Alley

2600 SOUTH KING STREET, HONOLULU, HI 96826



## Aerial



## Location Description

This supreme location is ideal for any retailer or office user looking to be at the entrance of Manoa Valley or in close proximity to the University of Hawaii, Manoa. Situated in the heart of Moiliili, with over 27,000 cars daily, next to East and West bound freeway entrances and exits, there is no other location with as much exposure, accessibility and visibility. Be a part of our vibrant community today!

## Contact Us

Erin W.J. Mitsuyoshi (S)  
Retail Service Group & Shopping  
Center Division  
808 523 9713  
[erin.mitsuyoshi@colliers.com](mailto:erin.mitsuyoshi@colliers.com)

COLLIERS INTERNATIONAL  
220 South King Street, Suite 1800  
Honolulu, HI 96813

[www.colliers.com](http://www.colliers.com)