

FOR LEASE > OFFICE / R&D / RETAIL

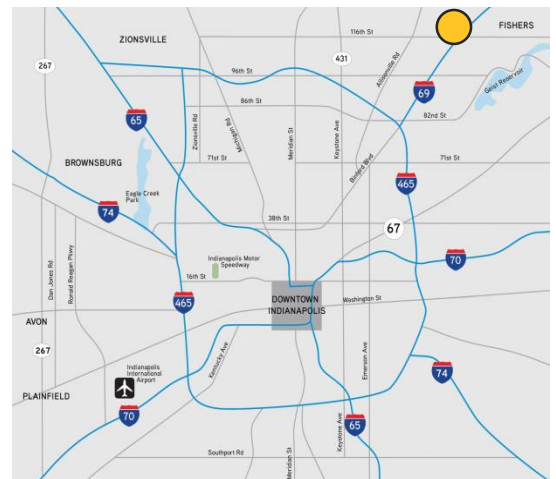
9155 E 146th Street

NOBLESVILLE, IN



Property Highlights

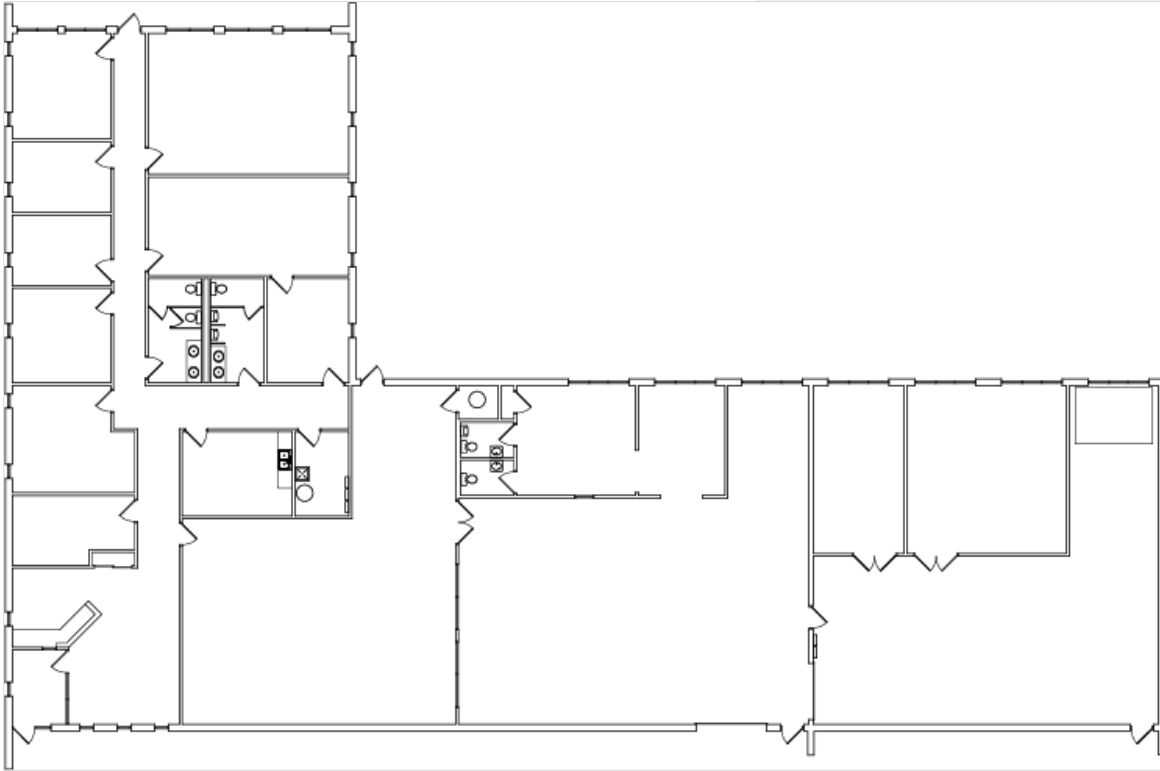
- > 10,800 total SF
 - 4,245 SF office
 - 6,555 SF temperature-controlled warehouse / R&D
- > Great visibility
- > Curb cuts and frontage along 146th Street & Herriman Blvd
- > Excellent access to 146th Street, SR 37, I-69 & US 31
- > Adjacent 42,620 SF building also available



BRAD WILLIAMS, CCIM
317 713 2127
brad.williams@colliers.com

COLLIERS INTERNATIONAL
241 N Pennsylvania St, Suite 300
Indianapolis, IN 46204
colliers.com

Floor Plan, Building Specs & Photos



Specifications

| | |
|--------------------------|---|
| Total Building Size | 10,800 SF |
| Temp Controlled Whse/R&D | 6,555 SF |
| Office | 4,245 SF |
| Ceiling Height | ± 14' |
| Loading | 1 overhead door |
| Construction | Brick/Block/Glass |
| Fire Suppression | Wet System |
| Year Built | 1991 (expanded in 1996) |
| Roof | Metal & Rubber |
| Heat | Ducted with HVAC units |
| Utilities | Gas: Vectren Service Area Water/Sewer: Noblesville (Private water) Internet Provider: Comcast (T-1) Electric: Duke Energy Power Specs: 400 amps / 277 / 480 V |

