

FOR SALE > LAND

Land, Industrial / Retail HWY 40 Vernal

1010 SOUTH HWY 40 VERNAL, UTAH



Property Information

- > For Sale: 3.1 Acres
- > 560' Hwy Frontage
- > Excellent access on 2 hard corners
- > 4,496 SF Retail/Industrial building on site with high ceilings, converted with "temporary" walls into a restaurant.
- > Sales Price: \$750,000.00



Spencer Croshaw
+1 801 702 4689
spencer.croshaw@colliers.com

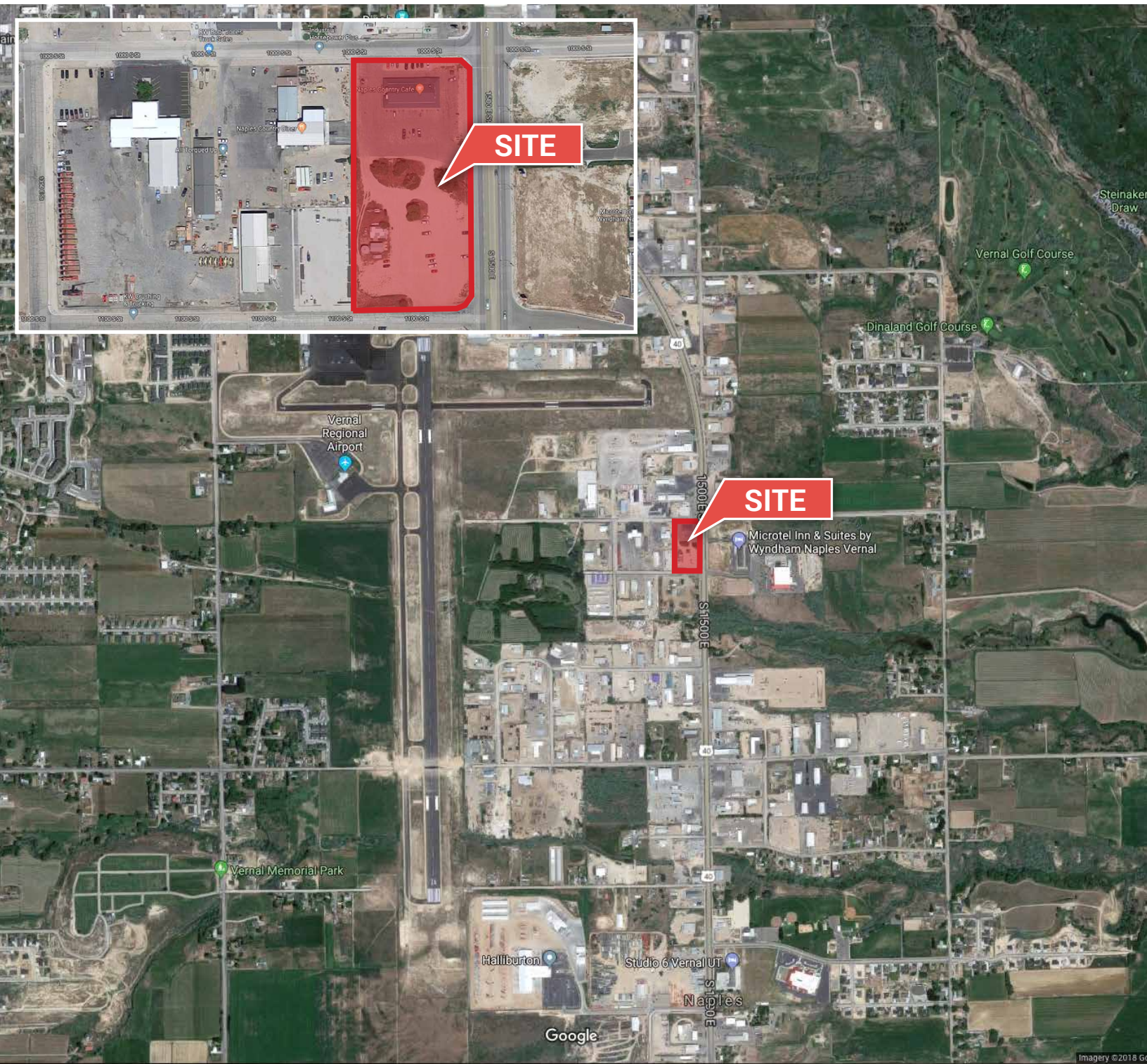
JD Brisk
+1 801 666 5776
jd.brisk@colliers.com

Colliers International
2100 Pleasant Grove Blvd. | Suite 200
Pleasant Grove, UT 84062
P: +1 801 610 1300

FOR SALE > LAND

Land, Industrial / Retail HWY 40 Vernal

1010 SOUTH HWY 40 VERNAL, UTAH



This document has been prepared by Colliers International for advertising and general information only. Colliers International makes no guarantees, representations or warranties of any kind, expressed or implied, regarding the information including, but not limited to, warranties of content, accuracy and reliability. Any interested party should undertake their own inquiries as to the accuracy of the information. Colliers International excludes unequivocally all inferred or implied terms, conditions and warranties arising out of this document and excludes all liability for loss and damages arising there from. This publication is the copyrighted property of Colliers International and/or its licensor(s). ©2018. All rights reserved.

Colliers International
2100 Pleasant Grove Blvd. | Suite 200
Pleasant Grove, UT 84062
P: +1 801 610 1300

