

BUILT OUT MEDICAL WITH EXISTING DENTAL INFRASTRUCTURE IN-PLACE

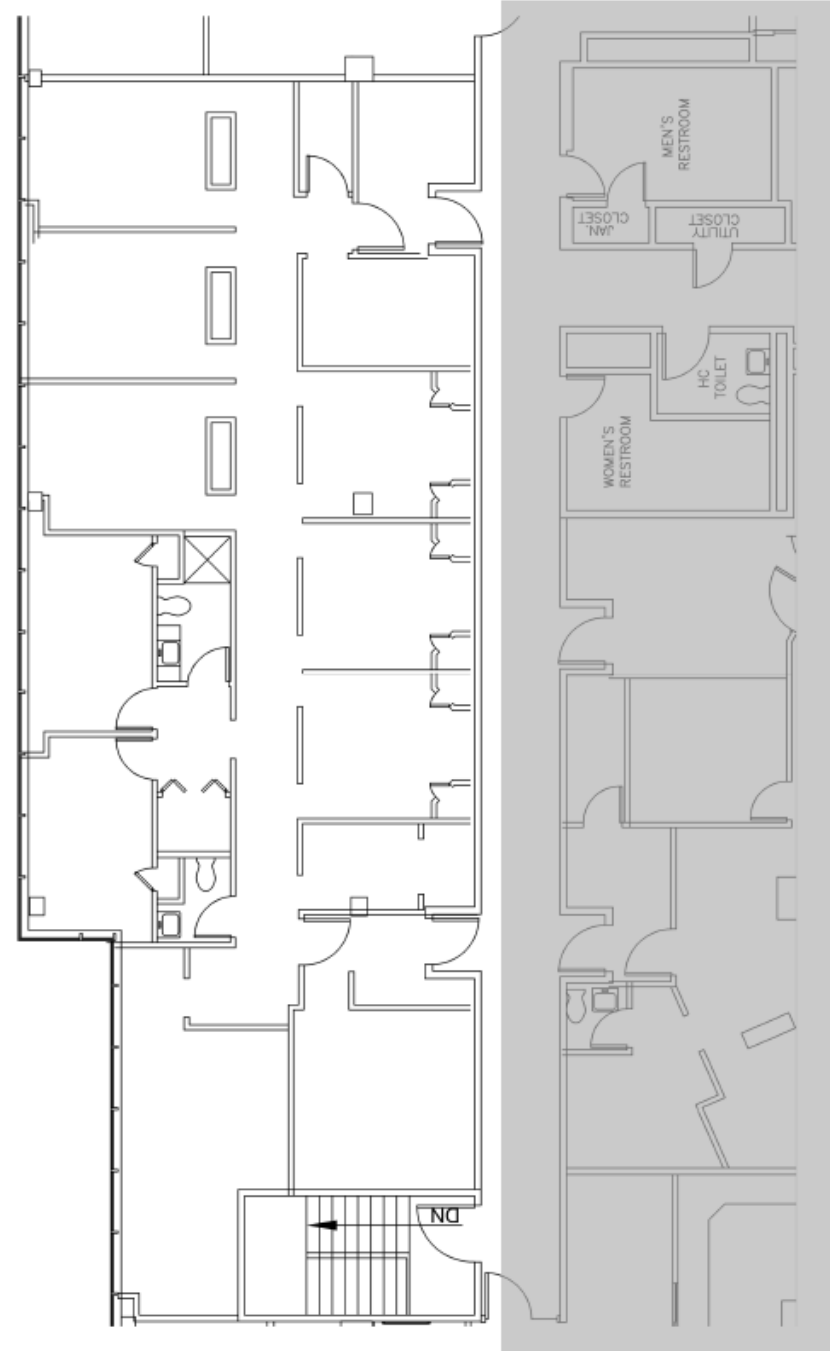
FOR LEASE

**999 WALT WHITMAN ROAD  
MELVILLE, NEW YORK**



# SUITE 302

- › 2,500 Square Feet
- › Landlord Will Build to Suit
- › Office or Medical Use
- › Owner Occupied
- › Excellent Parking
- › Monument Signage and Reserved Parking is Provided
- › Located conveniently between the LIE & Northern State
- › Medical Rent – \$29.50 PSF + Utilities
- › Office Rent – \$26.00 PSF + Utilities





POTENTIAL RENDERINGS — CONCEPTUAL AND ILLUSTRATIVE PURPOSES ONLY





## CONTACT US

**DARREN LEIDERMAN**  
516 284 3434  
darren.leiderman@colliers.com  
Licensed Salesperson

**MICHAEL ZAWOL**  
516 284 3417  
michael.zawol@colliers.com  
Licensed Salesperson

This document/email has been prepared by Colliers for advertising and general information only. Colliers makes no guarantees, representations or warranties of any kind, expressed or implied, regarding the information including, but not limited to, warranties of content, accuracy and reliability. Any interested party should undertake their own inquiries as to the accuracy of the information. Colliers excludes unequivocally all inferred or implied terms, conditions and warranties arising out of this document and excludes all liability for loss and damages arising therefrom. This publication is the copyrighted property of Colliers and /or its licensor(s). © 2021. All rights reserved. This communication is not intended to cause or induce breach of an existing listing agreement. [Include your market's legal name here. (ex. Colliers International Group Inc.)]