

FOR SUBLEASE > OFFICE SPACE

# 11 Stanwix Street

PITTSBURGH, PA 15222



## Property Highlights

- > Class A Sublease Now Available
  - Newly constructed suite – 6,970 RSF located on the 12th floor
  - Sublease term through April 30, 2022
- > Above building standard finishes throughout the suite
- > Spectacular views
- > Fully furnished
- > Integral parking spaces available
- > Planned building lobby renovations to include
  - Tenant lounge
  - Conference center
  - Fitness center
- > Recently renovated and landscaped courtyard
- > Within short walking distance to Point State Park, Market Square, Wyndam Hotel, North Shore Connector "T" Station
- > Excellent access to North, South, East & West major roadways

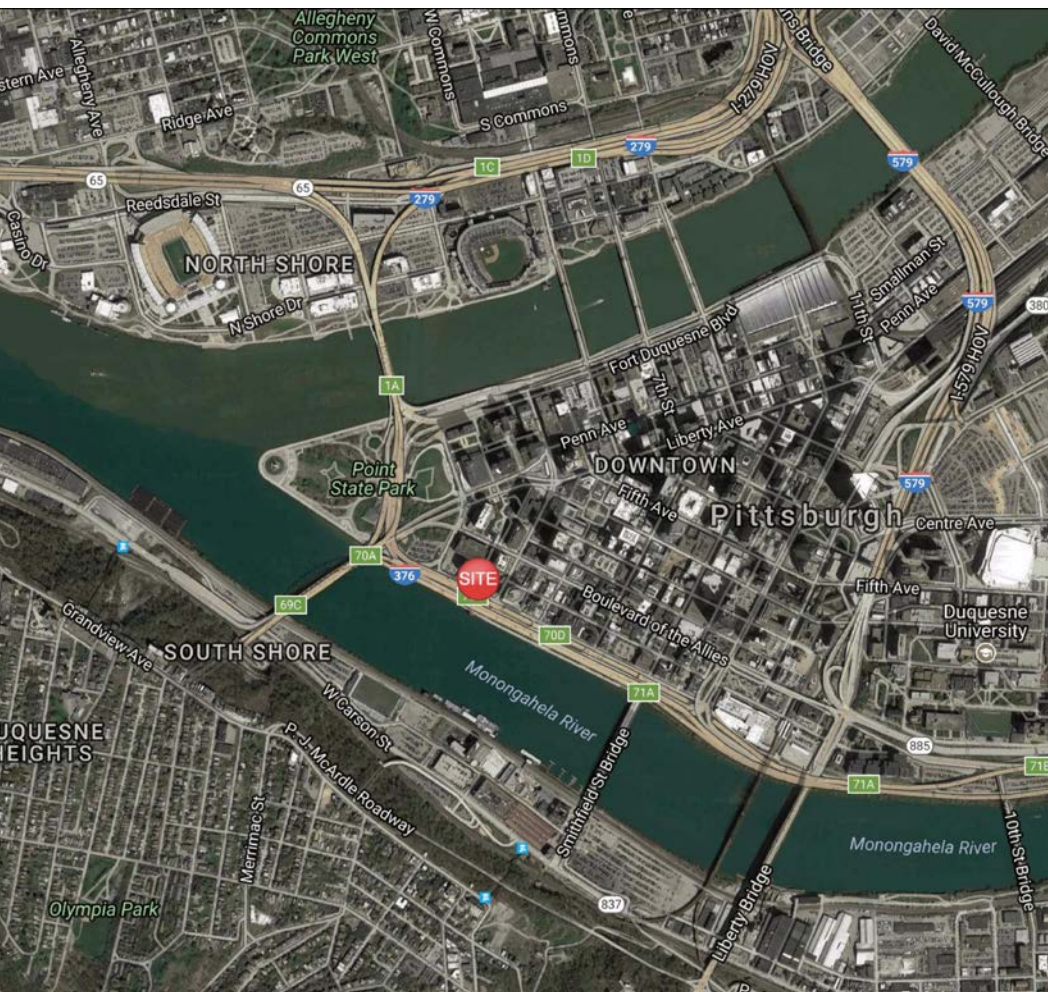
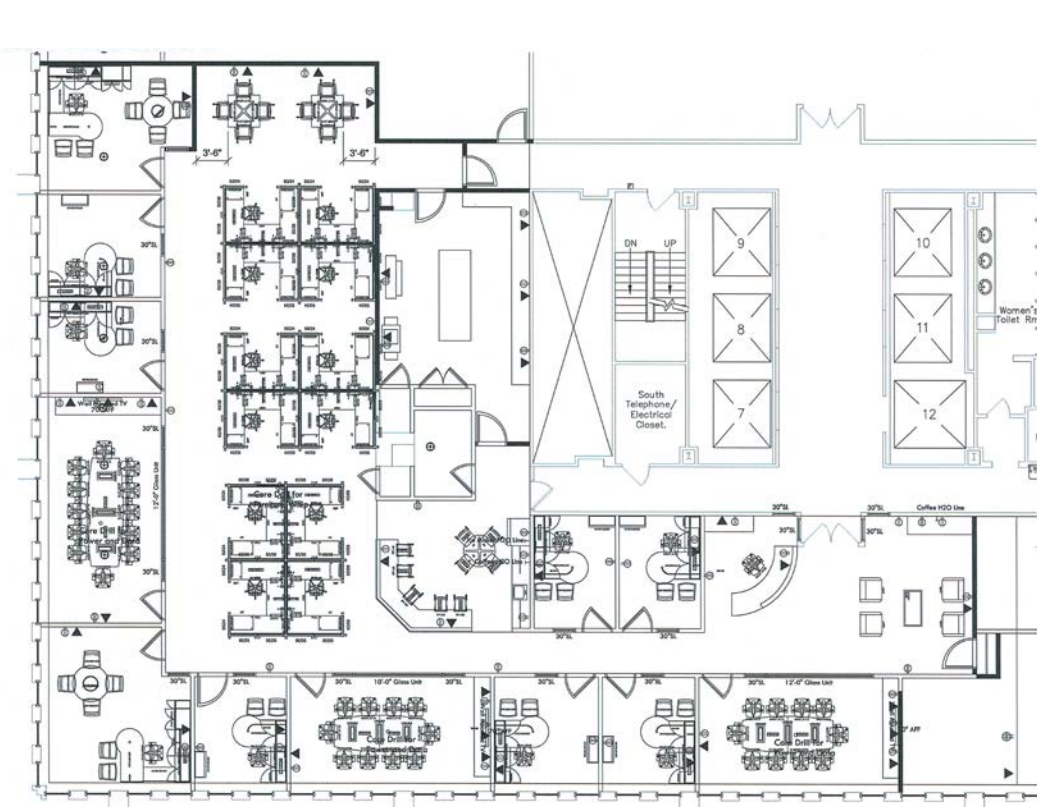


PAUL HORAN  
FOUNDING PRINCIPAL | PITTSBURGH  
OFFICE BROKERAGE  
412 321 4200 | EXT. 205  
paul.horan@colliers.com

EDWARD LAWRENCE  
PRINCIPAL | PITTSBURGH  
OFFICE BROKERAGE  
412 321 4200 | EXT. 213  
ed.lawrence@colliers.com

MAMADOU BALDÉ Esq.  
VICE PRESIDENT | PITTSBURGH  
OFFICE BROKERAGE  
412 321 4200 | EXT. 224  
mamadou.balde@colliers.com





## Contact Us

PAUL HORAN  
FOUNDING PRINCIPAL | PITTSBURGH  
OFFICE BROKERAGE  
412 321 4200 | EXT. 205  
[paul.horan@colliers.com](mailto:paul.horan@colliers.com)

EDWARD LAWRENCE MBA  
PRINCIPAL | PITTSBURGH  
OFFICE BROKERAGE  
412 321 4200 | EXT. 213  
[ed.lawrence@colliers.com](mailto:ed.lawrence@colliers.com)

MAMADOU BALDÉ ESQ.  
VICE PRESIDENT | PITTSBURGH  
OFFICE BROKERAGE  
412 321 4200 | EXT. 224  
[mamadou.balde@colliers.com](mailto:mamadou.balde@colliers.com)

COLLIERS INTERNATIONAL | PITTSBURGH  
Two Gateway Center  
603 Stanwix Street, Suite 125  
Pittsburgh, PA 15222  
[www.colliers.com/pittsburgh](http://www.colliers.com/pittsburgh)

The information contained herein has been given to us by the owner of the property or other sources we deem reliable. We have no reason to doubt its accuracy, but we do not guarantee it. All information should be verified prior to purchase or lease.

