

FOR SUBLEASE ■ OFFICE

±3,140 Square Feet

480 S. CALIFORNIA AVENUE, SUITE 100, PALO ALTO CA

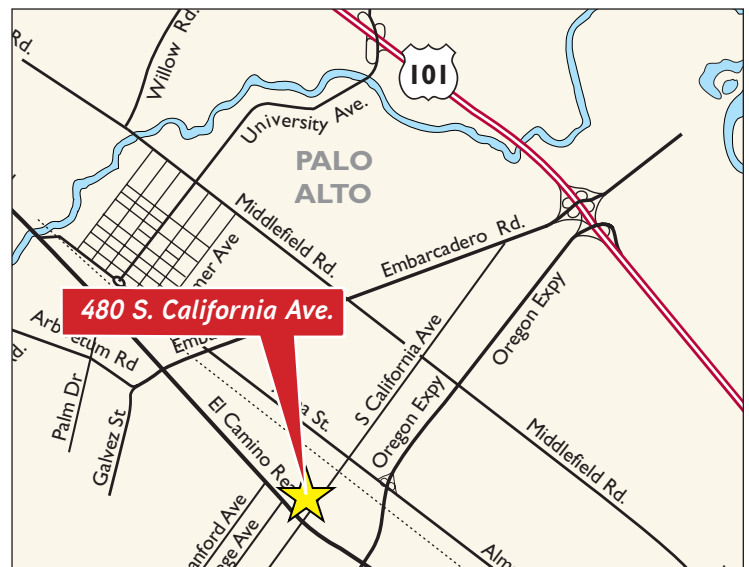


FULL COMMISSION



Project Highlights

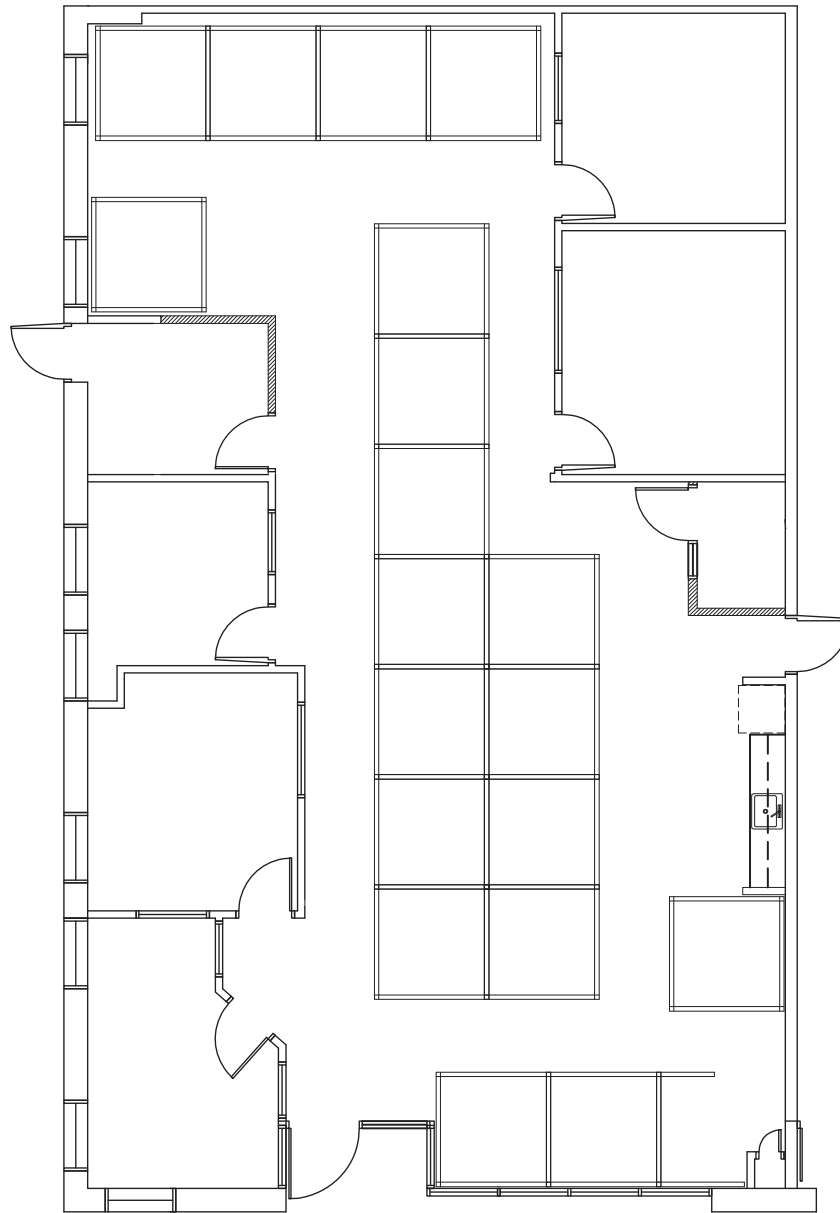
- **Walking Distance from Caltrain**
- Sublease Through 9/30/2018 (**Longer Term Available**)
- \$5.95 SF Full Service
- Cubicles & Furniture Included
- Ground Floor Entrance on California Avenue
- Available Immediately
- Call Broker to Show



BRUCE HORTON
+1 408 282 3831
bruce.horton@colliers.com
CA License No. 00696242

COLLIERS INTERNATIONAL
450 West Santa Clara Street
San Jose, CA 95113
+1 408 282 8100 Main
+1 408 295 8100 Fax
www.colliers.com

480 S. California Avenue, Suite 100, Palo Alto ■ Floor Plan



California Avenue

Drawings not exact/not to scale. The information furnished has been obtained from sources we deem reliable and is submitted subject to errors, omissions and changes. Although Colliers International has no reason to doubt its accuracy, we do not guarantee it. All information should be verified by the recipient prior to lease, purchase, exchange, or execution of legal documents. © 2017 Colliers International

BRUCE HORTON
+1 408 282 3831
bruce.horton@colliers.com
CA License No. 00696242

