

FOR LEASE > MEDICAL OFFICE SPACE

6650 Building

6650 W 110TH STREET, OVERLAND PARK, KANSAS



Property Features

- > Class A South Johnson County medical office space
- > 3,540–15,172± SF available
- > Join Diagnostic Imaging Centers' new headquarters
- > Parking ratio: 4.5/1,000
- > Excellent access to I-435
- > More than 150,000 cars per day on I-435
- > Surrounding hospitals include: Children's Mercy South, The University of Kansas Hospital - Indian Creek Campus, Overland Park Regional, Menorah Medical Center, and Saint Luke's South
- > Signage available for larger tenants

JIM GATES Sior
+1 816 556 1138
KANSAS CITY, MO
jim.gates@colliers.com

PAT COPPINGER
+1 816 556 1110
KANSAS CITY, MO
pat.coppinger@colliers.com

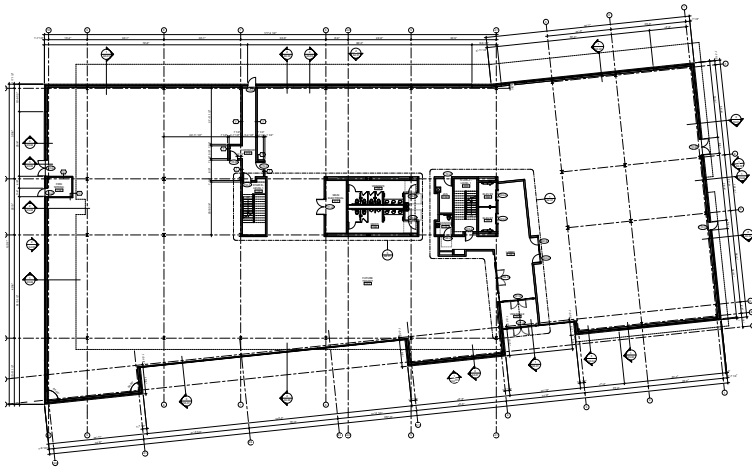
COLLIERS INTERNATIONAL
4520 Main Street, Suite 1000
Kansas City, MO 64111
www.colliers.com

FOR LEASE > MEDICAL OFFICE SPACE

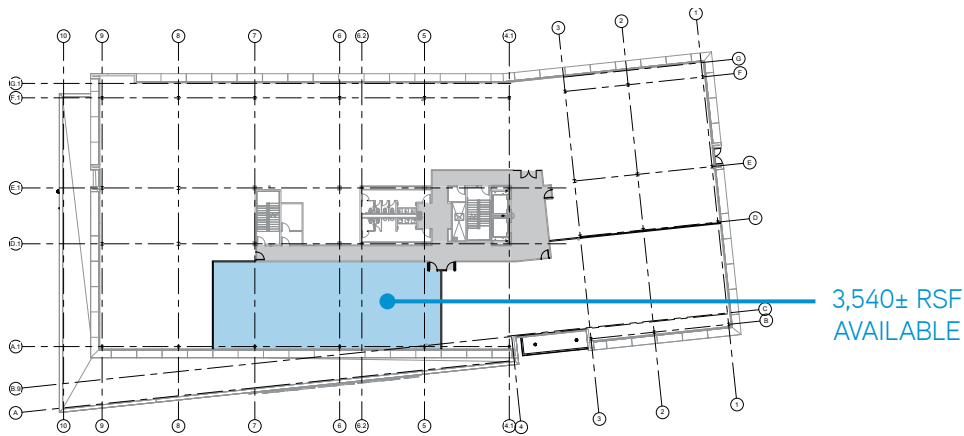
6650 Building

6650 W 110TH STREET, OVERLAND PARK, KANSAS

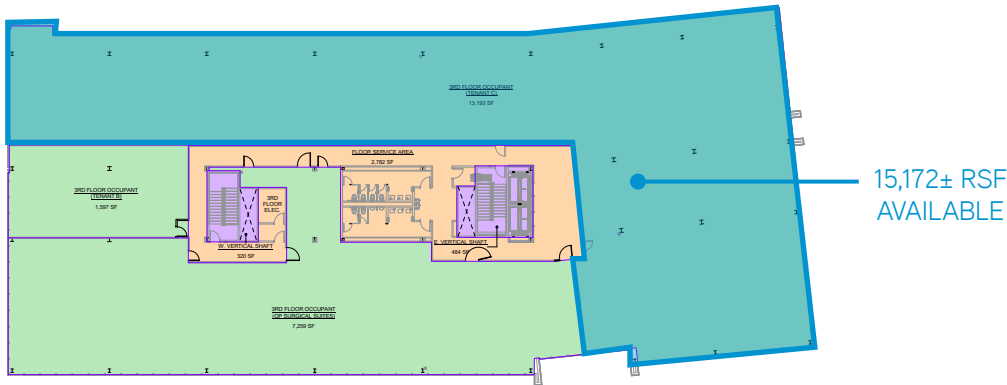
FIRST FLOOR PLAN



SECOND FLOOR PLAN



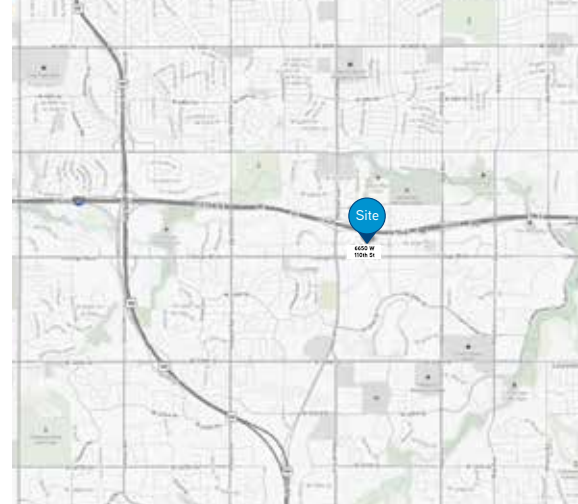
THIRD FLOOR PLAN



FOR LEASE > MEDICAL OFFICE SPACE

6650 Building

6650 W 110TH STREET, OVERLAND PARK, KANSAS



Contact Us

JIM GATES SIOB
+1 816 556 1138
KANSAS CITY, MO
jim.gates@colliers.com

PAT COPPINGER
+1 816 556 1110
KANSAS CITY, MO
pat.coppinger@colliers.com

COLLIERS INTERNATIONAL
4520 Main Street, Suite 1000
Kansas City, MO 64111
www.colliers.com

This document has been prepared by Colliers International for advertising and general information only. Colliers International makes no guarantees, representations or warranties of any kind, expressed or implied, regarding the information including, but not limited to, warranties of content, accuracy and reliability. Any interested party should undertake their own inquiries as to the accuracy of the information. Colliers International excludes unequivocally all inferred or implied terms, conditions and warranties arising out of this document and excludes all liability for loss and damages arising there from. This publication is the copyrighted property of Colliers International and/or its licensor(s). ©2018. All rights reserved.

