

FOR LEASE

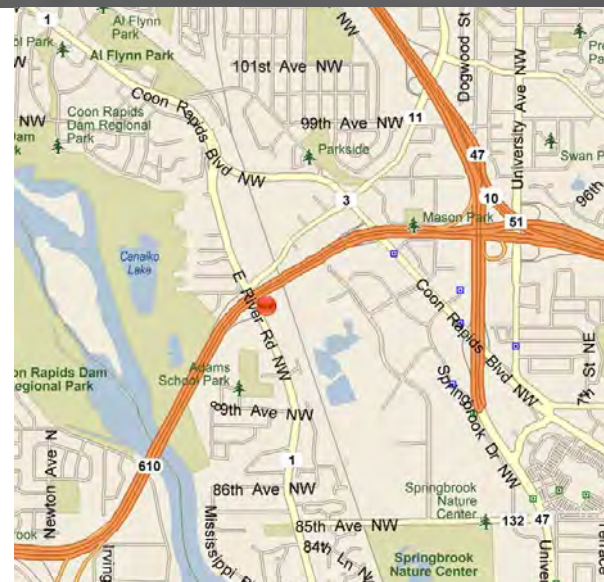
9225 East River Road

COON RAPIDS, MINNESOTA



Building Amenities

- › 10,608 square feet total
- › 804 square feet of office
- › 9,804 square feet of warehouse
- › One (1) 8' x 10' dock door
- › One (1) 12' x 14' drive-in door
- › 18' clear height
- › Fenced outdoor storage available
- › Newly paved parking lot with ample parking
- › Signage available
- › Easy access to Highway 610/10/252



COLLIERS INTERNATIONAL
5985 Rice Creek Parkway, Suite 105
Shoreview, MN 55126

www.colliers.com

DAN FRIEDNER
952 897 7863 direct
612 599 7864 mobile
dan.friedner@colliers.com

JUSTIN RATH
952 897 7803 direct
612 720 6957 mobile
justin.rath@colliers.com

9225 East River Road > Aerial



Contact Us

DAN FRIEDNER
952 897 7863 direct
612 599 7864 mobile
dan.friedner@colliers.com

JUSTIN RATH
952 897 7803 direct
612 720 6957 mobile
justin.rath@colliers.com

COLLIERS INTERNATIONAL
5985 Rice Creek Parkway, Suite 105
Shoreview, MN 55126
www.colliers.com



PROPERTY FACT SHEET

9225 East River Road

COON RAPIDS, MINNESOTA



PROPERTY ADDRESS:

9225 East River Road
Coon Rapids, MN

CURRENTLY AVAILABLE:

Suite 9225:

10,608 square feet - total
804 square feet - office
9,804 square feet - warehouse
* Divisible to 5,304 square feet

BUILDING SIZE:

47,000 square feet

LEASE RATES:

\$8.75 per square foot NNN - office
\$4.50 per square foot NNN - warehouse

2018 ESTIMATED PROPERTY TAX & CAM:

\$1.90 per square foot - taxes
\$1.30 per square foot - CAM
\$3.05 per square foot - total

AMENITIES:

- Ample parking
- Easy access to Highway 10 via Highway 610



For Additional Information, Contact:

DAN FRIEDNER
952 897 7863 direct
612 599 7864 mobile
dan.friedner@colliers.com

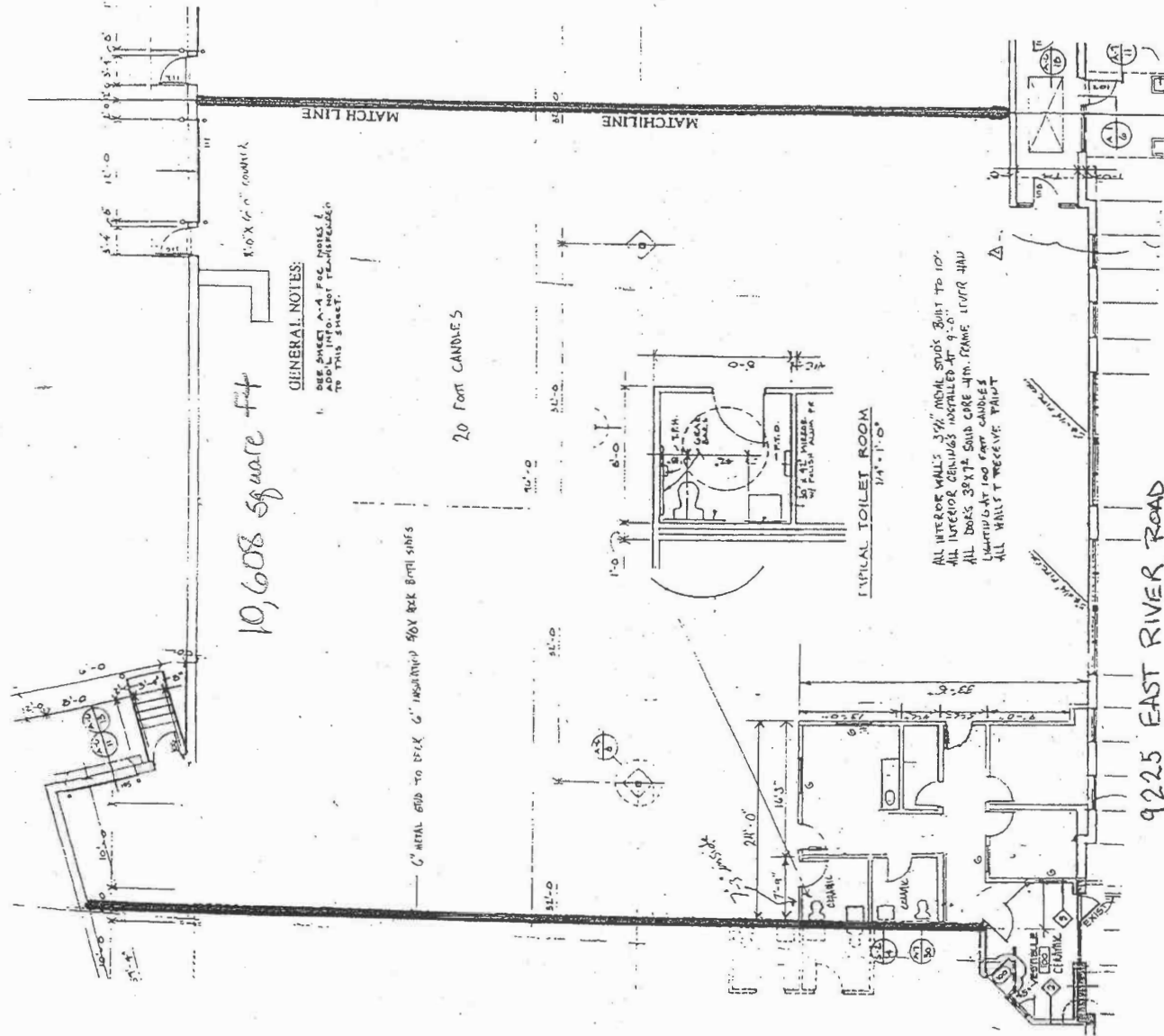
JUSTIN RATH
952 897 7803 direct
612 720 6957 mobile
justin.rath@colliers.com

COLLIERS INTERNATIONAL
5985 Rice Creek Parkway, Suite 105
Shoreview, MN 55126

www.colliers.com

9225 East River Road
COON RAPIDS, MN

Suite 9225



DAN FRIEDNER
952 897 7863 direct
612 599 7864 mobile
dan.friedner@colliers.com

JUSTIN RATH
952 897 7803 direct
612 720 6957 mobile
justin.rath@colliers.com