



555  
CAPITOL MALL

YOU  
CAN DO  
IT ALL  
HERE

Colliers  
INTERNATIONAL



555 CAPITOL MALL  
YOU CAN DO IT ALL HERE



# A 12-HOUR DAY AT 555 CAPITOL MALL

< Today



8:00 AM

## COFFEE

9:00 AM

Grab your coffee at the building's newest local vendor, Old Soul Co.

9:00 AM

## THE OFFICE

12:00 AM

Experience a seamless working environment with updated technology and infrastructure

12:00 PM

## LUNCH

1:30 PM

Dine at an upscale restaurant coming soon to the building

2:00 PM

## MEETING

3:00 PM

Greet your clients in the newly renovated corner suite featuring floor to ceiling glass

4:00 PM

## WORKOUT

5:00 PM

Allow time for yourself at the building's gym and common areas with river views

6:00 PM

## DOWNTOWN COMMONS

7:30 PM

Have some fun, food and drinks at one of the newest restaurants coming to DOCO: Yard House Restaurant

8:00 PM

## GOLDEN 1 CENTER

10:00 PM

Next door, attend your pick of 200 hosted events, games and concerts



# DOWNTOWN COMMONS ENTERTAINMENT & LIFESTYLE CENTER



## DOWNTOWN COMMONS

Main, newest and  
coming soon retailers

1 ★ macy's

2 KIMPTON  
THE SAWYER

4 Yard House

6 URBAN OUTFITTERS

8 CINEMARK  
CENTURY THEATRES. CinéArts. Tinseltown

3 PUNCH BOWL  
SOCIAL

5 24 FITNESS

7 C Camden  
Spit & Larder

## GOLDEN 1 CENTER

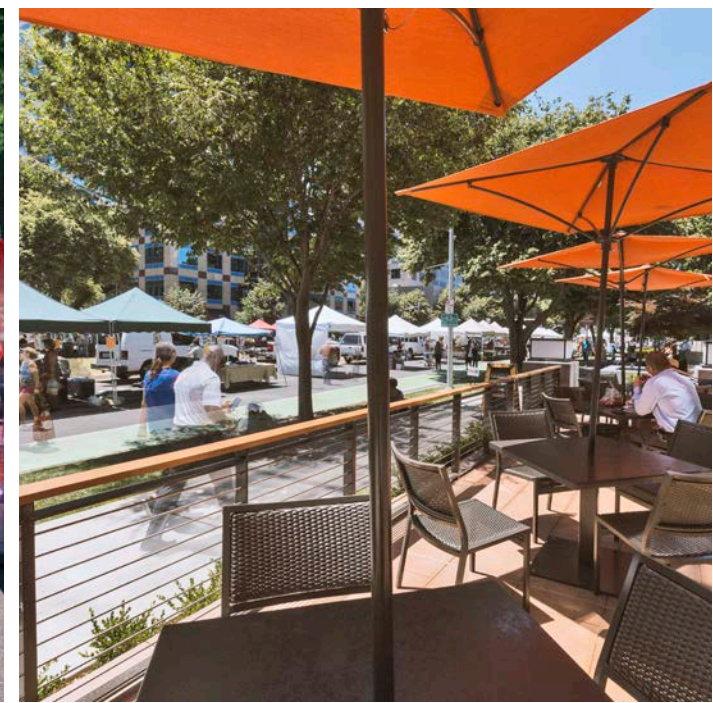
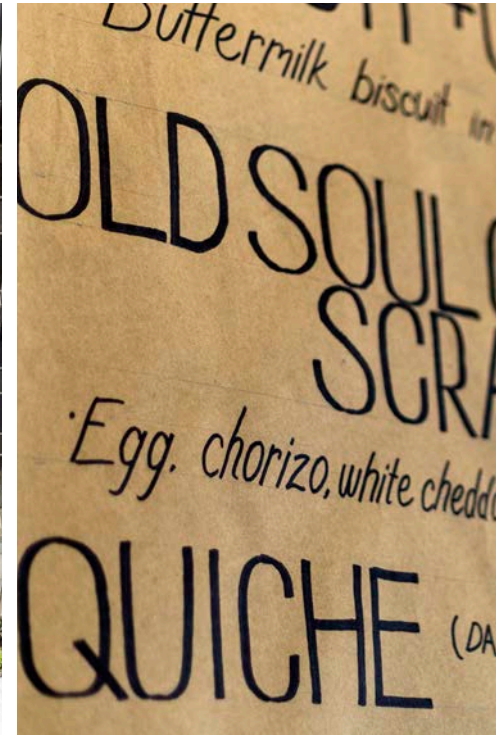
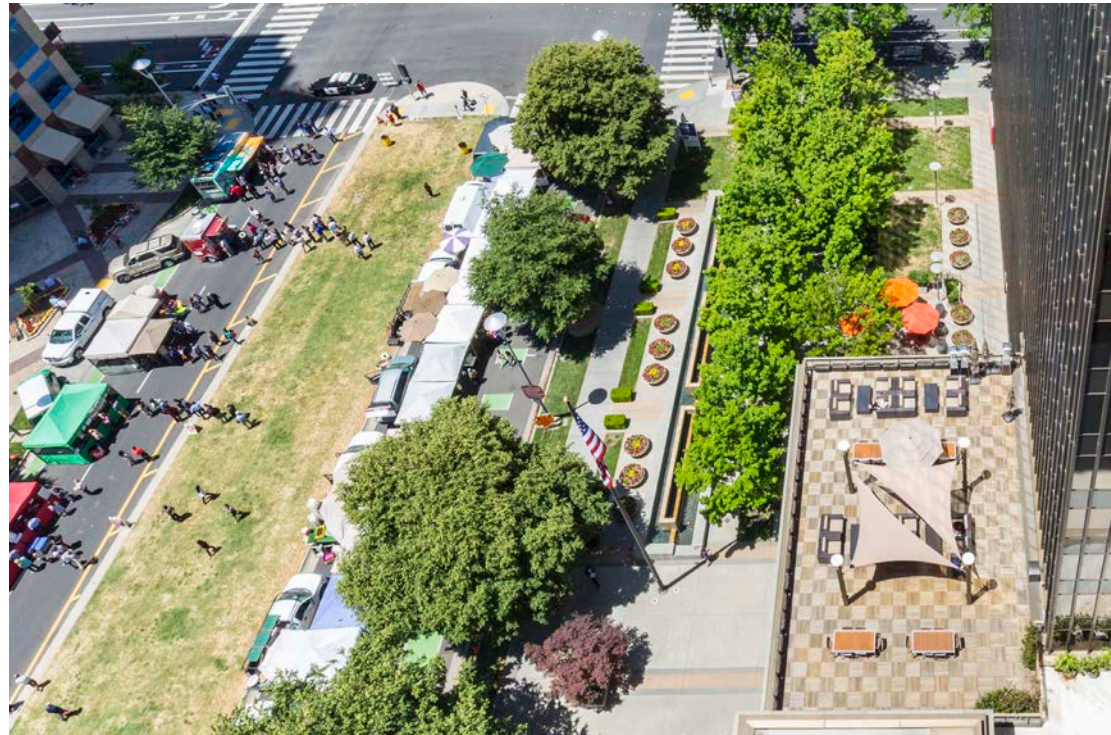
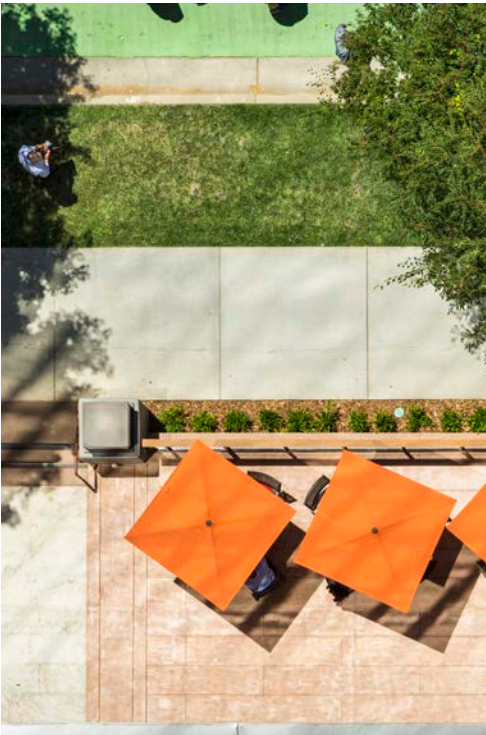
Most high-tech arena in the U.S with 1M+  
guests in the first 6 months of opening

## 700 BLOCK & K STREET

±250,000 SF of retail with 50+ restaurants



# CAPITOL MALL RAISING THE CITY'S PROFILE



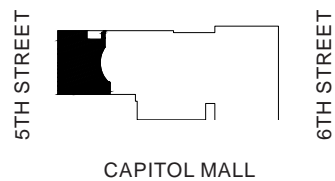
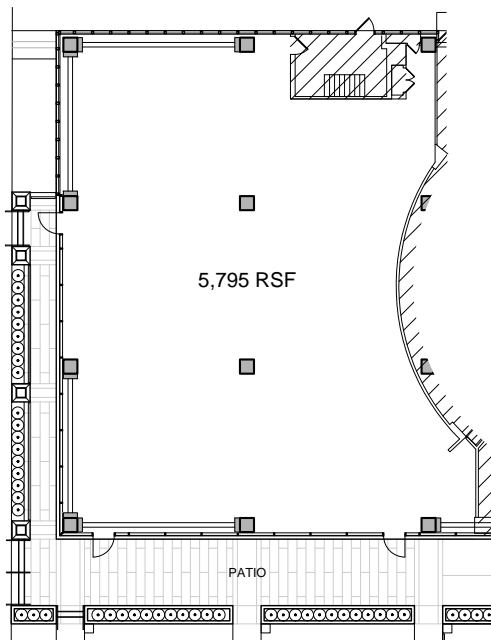


# 555 CAPITOL MALL

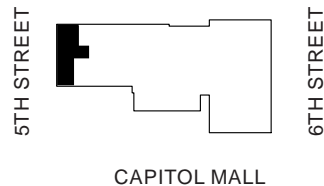
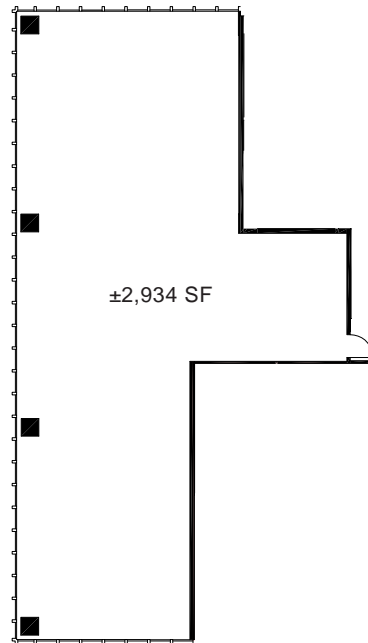
## AVAILABLE SPACE FLOOR PLANS

AVAILABLE DEC 2018

### WEST TOWER - GROUND FLOOR



### WEST TOWER - SUITE 1195, 11TH FLOOR

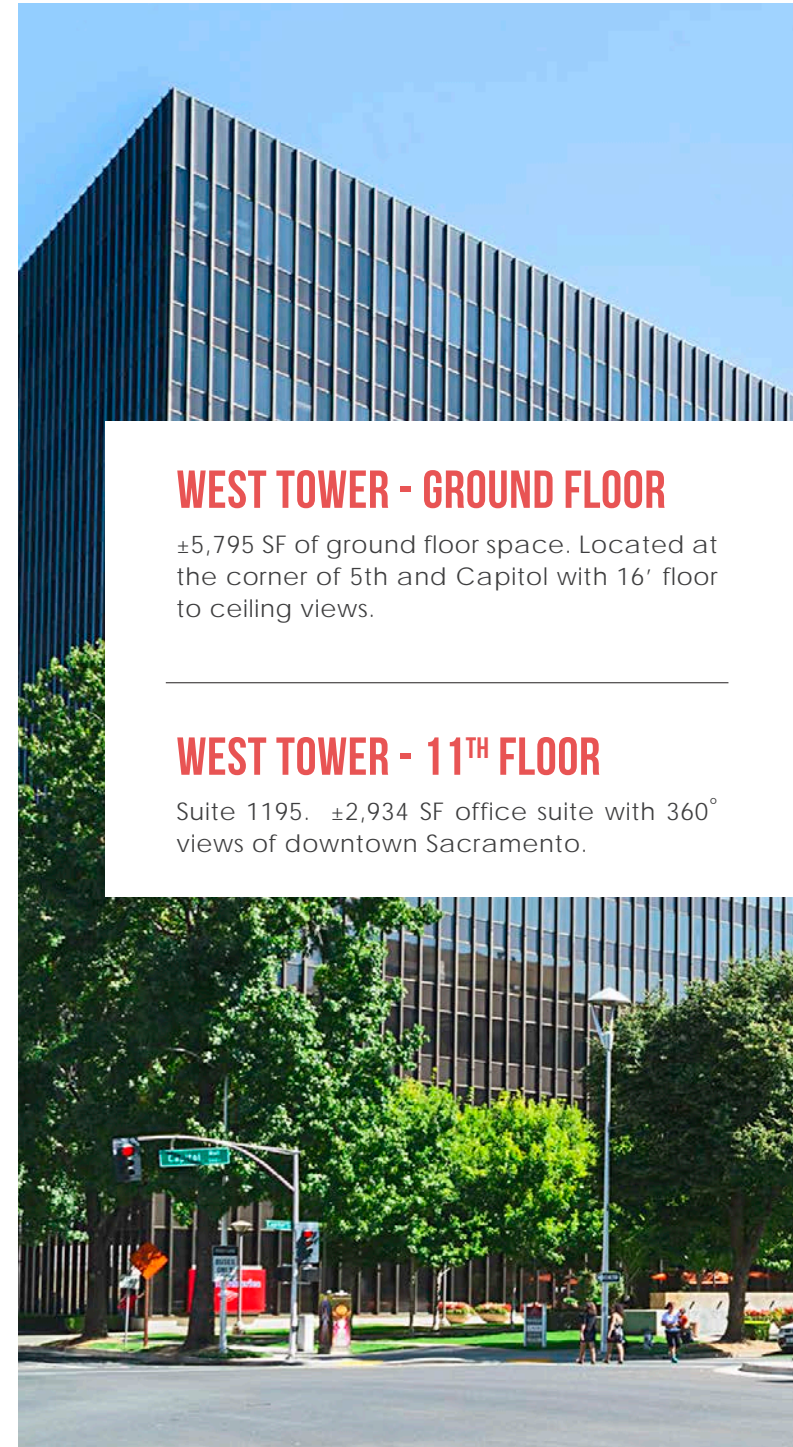


### WEST TOWER - GROUND FLOOR

±5,795 SF of ground floor space. Located at the corner of 5th and Capitol with 16' floor to ceiling views.

### WEST TOWER - 11<sup>TH</sup> FLOOR

Suite 1195. ±2,934 SF office suite with 360° views of downtown Sacramento.

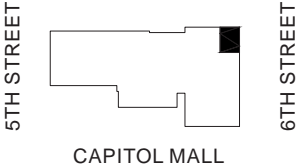
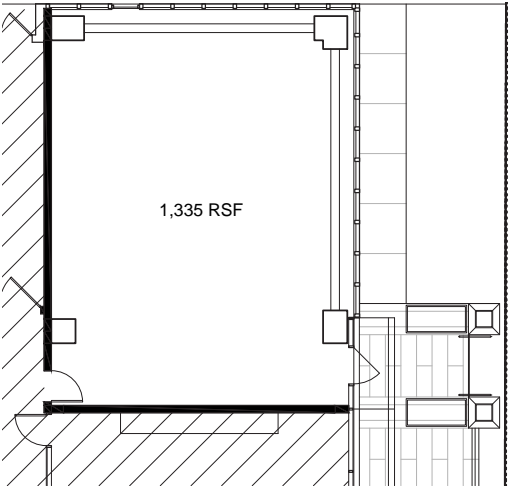


# 555 CAPITOL MALL

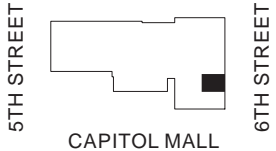
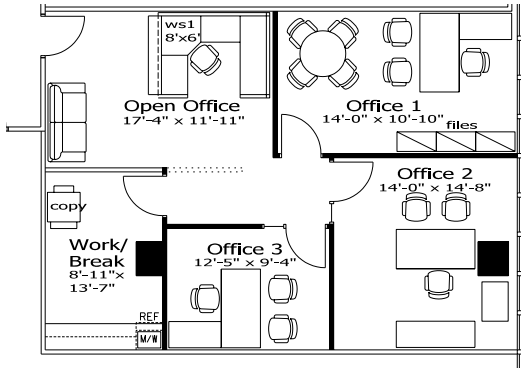
## AVAILABLE SPACE FLOOR PLANS



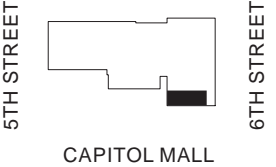
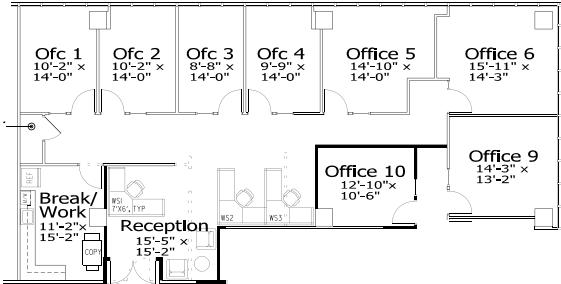
EAST TOWER - GROUND FLOOR



EAST TOWER - SUITE 215, 2ND FLOOR



EAST TOWER - SUITE 1215, 12TH FLOOR



### EAST TOWER, GROUND FLOOR

±1,335 SF available on the ground floor of the East tower on the 6th street side of the building with 16' floor to ceiling views.

This space is adjacent to what will be Sacramento's newest fine dining restaurant, Camden Spit & Larder, and shares the building's newest conference room facilities.

### EAST TOWER, 2<sup>ND</sup> FLOOR

Suite 215. ±1,122 SF available.

### EAST TOWER, 12<sup>TH</sup> FLOOR

Suite 1215. ±2,230 SF available.







# 555

## CAPITOL MALL

### THOMAS WALCOTT

Senior Vice President  
License 01121178  
thomas.walcott@colliers.com  
+1 916 563 3002

### JASON RUTHERFORD

Senior Vice President  
License 01260682  
jason.rutherford@colliers.com  
+1 916 563 3059

