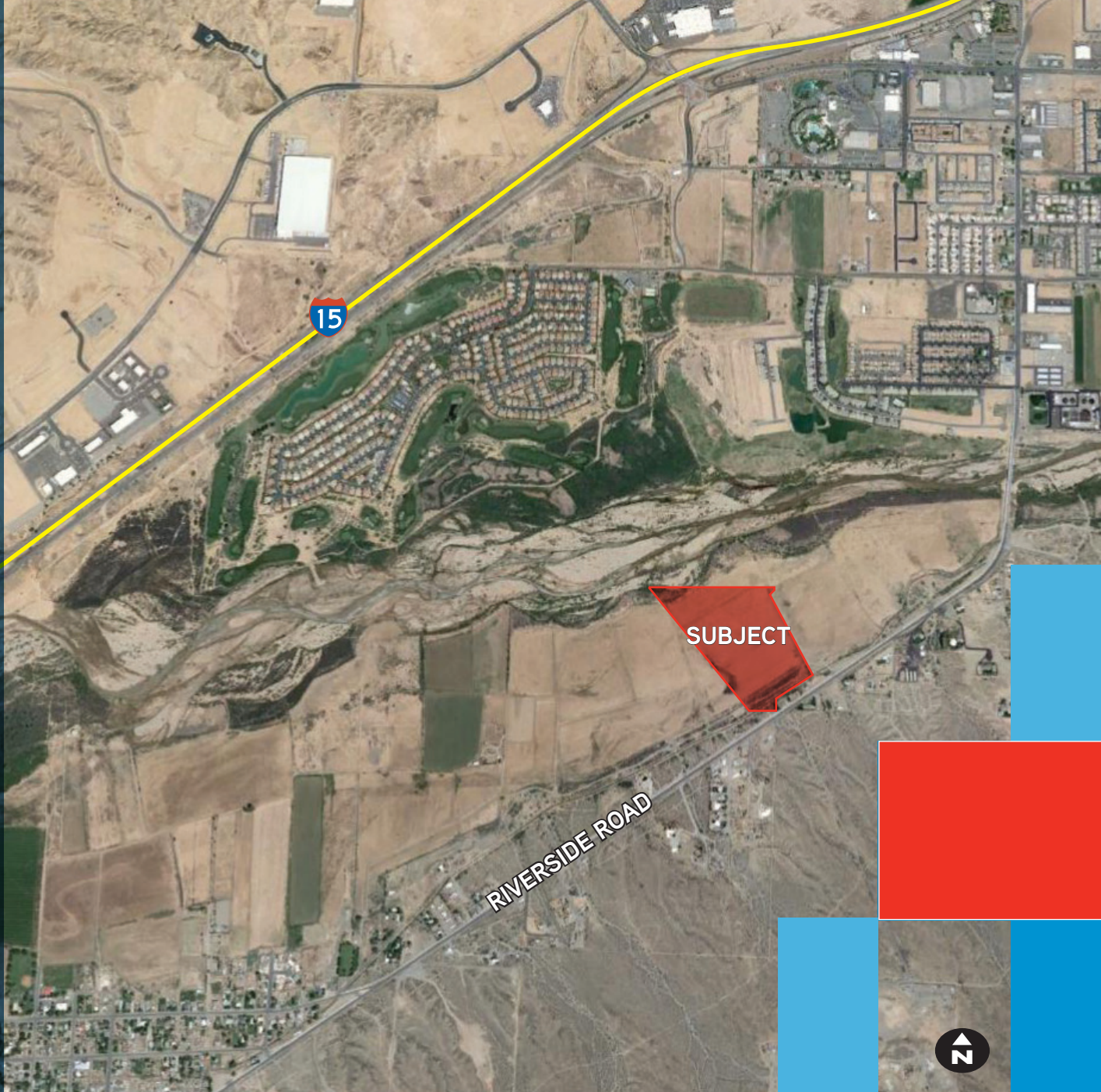


29.8 ACRES IN BUNKERVILLE, NEVADA



FOR SALE

±29.8 ACRES

SINGLE FAMILY  
RESIDENTIAL LAND

SUBJECT

BUNKERVILLE, NEVADA



VINCE SCHETTTLER

+1 702 836 3764

[vince.schettler@colliers.com](mailto:vince.schettler@colliers.com)



# ±29.8 Acres

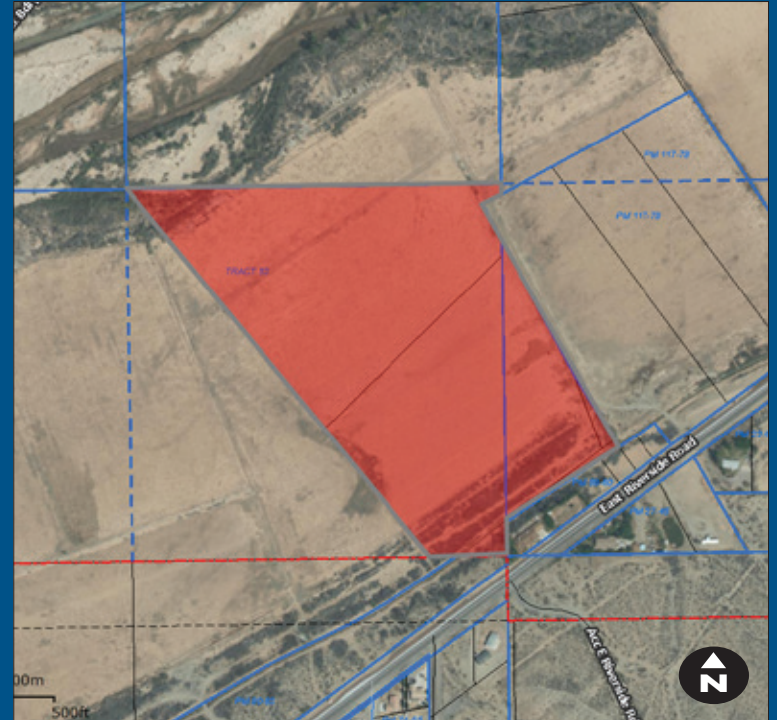
## PROPERTY HIGHLIGHTS

- Suburban Residential up to 8 dwelling units/acre

## PROPERTY DETAILS

APN	001-19-401-004 & 006 001-19-801-013
GROSS ACRES:	±29.8
UTILITIES:	Buyer to verify
LOCATION:	Riverside Road near Scrub and Agnes
GOVERNING JURISDICTION:	Clark County, Nevada: Bunkerville

**PRICE:** **SUBMIT ALL OFFERS**



VINCE SCHETTLER  
+1 702 836 3764  
vince.schettler@colliers.com



This is a detailed plat map of a portion of Section 36, Township 36N, Range 12E. The map shows the following features:

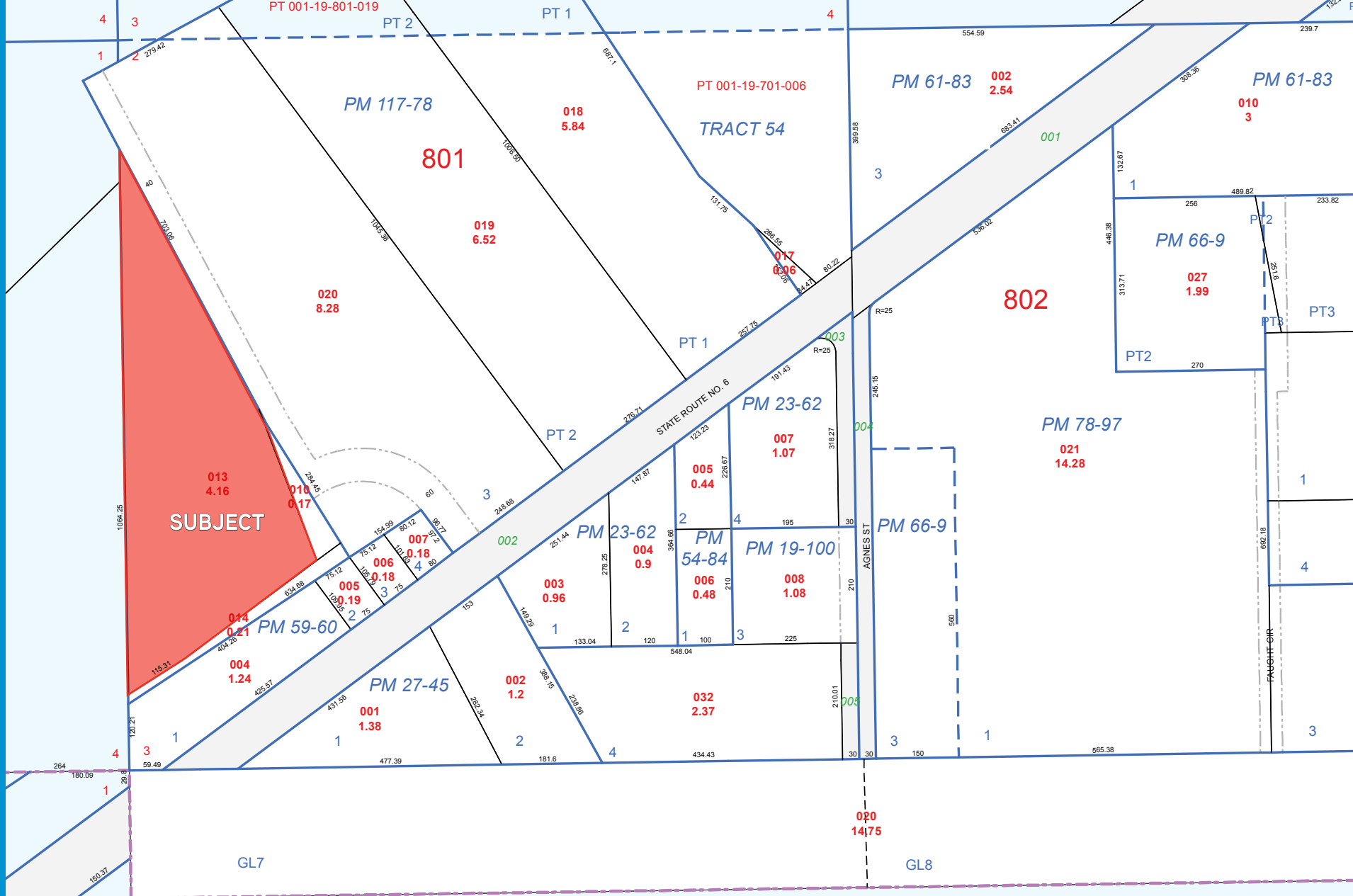
- TRACT 52:** Located on the left side of the map, containing a large area labeled **401** and a smaller area labeled **002 51.32**.
- TRACT 53:** Located in the upper right portion of the map, containing an area labeled **006 15.14**.
- SUBJECT:** A large area shaded in red, located in the center-right of the map, containing an area labeled **004 10.49**.
- Boundaries and Measurements:**
  - North boundary: A solid line with a bearing of  $N 115.31^{\circ} E$  and a distance of  $120.21$ .
  - East boundary: A solid line with a bearing of  $S 89.73^{\circ} E$  and a distance of  $385.73$ .
  - South boundary: A dashed line with a bearing of  $S 211.78^{\circ} E$  and a distance of  $271.78$ .
  - West boundary: A dashed line with a bearing of  $S 106.5^{\circ} E$  and a distance of  $1065.9$ .
  - Internal boundaries: A solid line with a bearing of  $S 67.4^{\circ} E$  and a distance of  $674.5$ , and a solid line with a bearing of  $S 1330.88^{\circ} E$  and a distance of  $1330.88$ .
- Other Labels:**
  - 001 15.14**: Located near the top right corner of the red-shaded area.
  - 003 10.49**: Located near the bottom right corner of the red-shaded area.
  - 005 10.49**: Located near the bottom right corner of the red-shaded area.
  - 007 10.49**: Located near the bottom right corner of the red-shaded area.

VINCE SCHETTLER  
+1 702 836 3764  
vince.schettler@colliers.com





# 29.8 ACRES IN BUNKERVILLE, NEVADA



This document has been prepared by Colliers International for advertising and general information only. Colliers International makes no guarantees, representations or warranties of any kind, expressed or implied, regarding the information including, but not limited to, warranties of content, accuracy and reliability. Any interested party should undertake their own inquiries as to the accuracy of the information. Colliers International excludes unequivocally all inferred or implied terms, conditions and warranties arising out of this document and excludes all liability for loss and damages arising there from. This publication is the copyrighted property of Colliers International and/or its licensor(s). ©2012. All rights reserved.

VINCE SCHETTLER  
+1 702 836 3764  
vince.schettler@colliers.com

Colliers  
INTERNATIONAL