

Office For Lease

Lease Rate:

\$22.00 PSF

Gross Lease



Kensington Office Building

1522 S. 1100 E.
Salt Lake City, UT 84105

East side office in a prime location with convenient freeway access and proximity to Sugar House retail, Westminster College, Downtown SLC, the 9th and 9th retail district and the University of Utah

Property Highlights

- 3,578 SF Total Available
 - Level 1 - 1,789 SF
 - Level 2 - 1,789 SF
- Floors may be leased individually or together
- Traditional office space in the heart of Sugar House
- Ample on-site parking (30 shared stalls)
- Building signage available
- High-visibility corner location in a high-traffic area
- Convenient access to public transit

Contact:

William Riedell

801 652 1105

william.riedell@colliers.com

Toni Carter

801 809 5620

toni@tonicarter.com



COLDWELL BANKER
REALTY

Colliers

6440 S. Millrock Dr., Suite 500

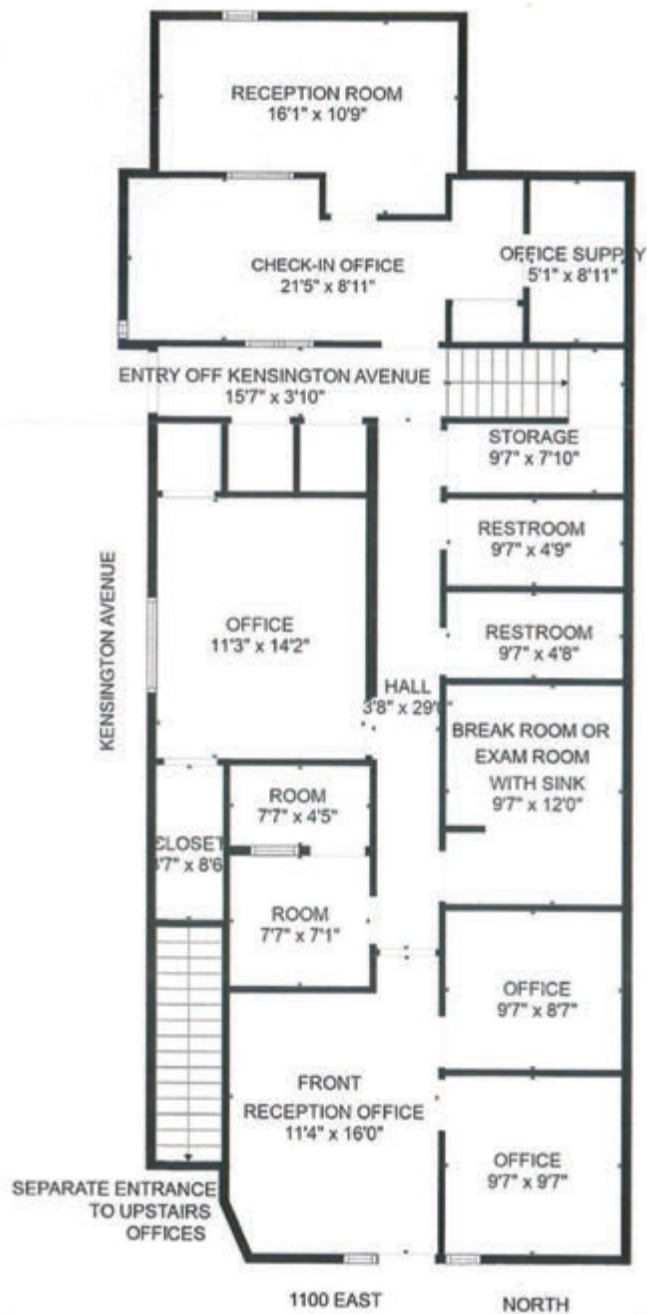
Salt Lake City, UT 84121

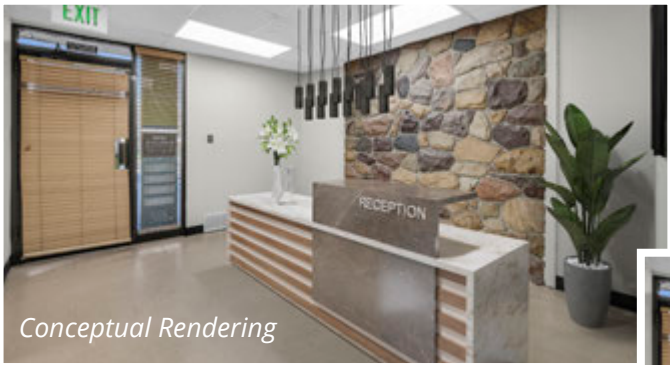
Main: +1 801 947 8300

colliers.com

Level 1 Floor Plan

1,789 SF

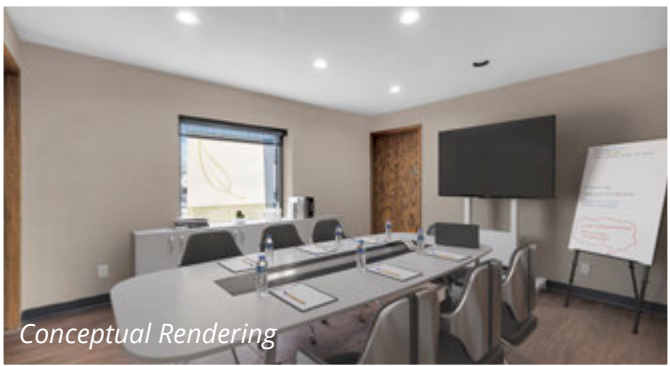




Conceptual Rendering



Conceptual Rendering

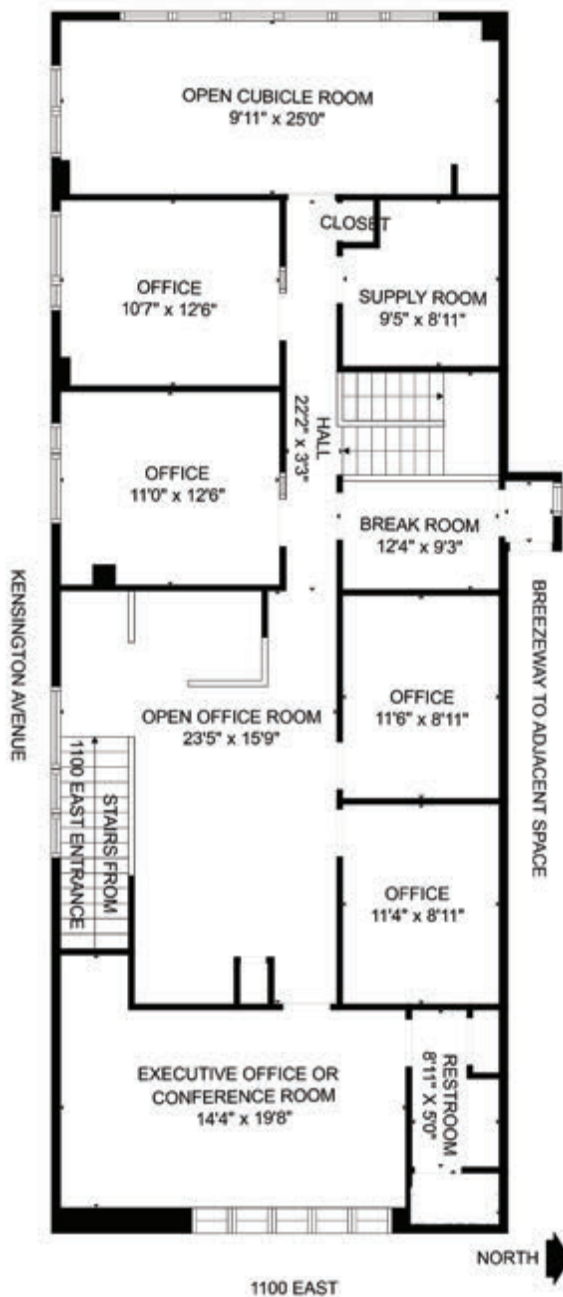


Conceptual Rendering



Level 2 Floor Plan

1,789 SF





Conceptual Rendering

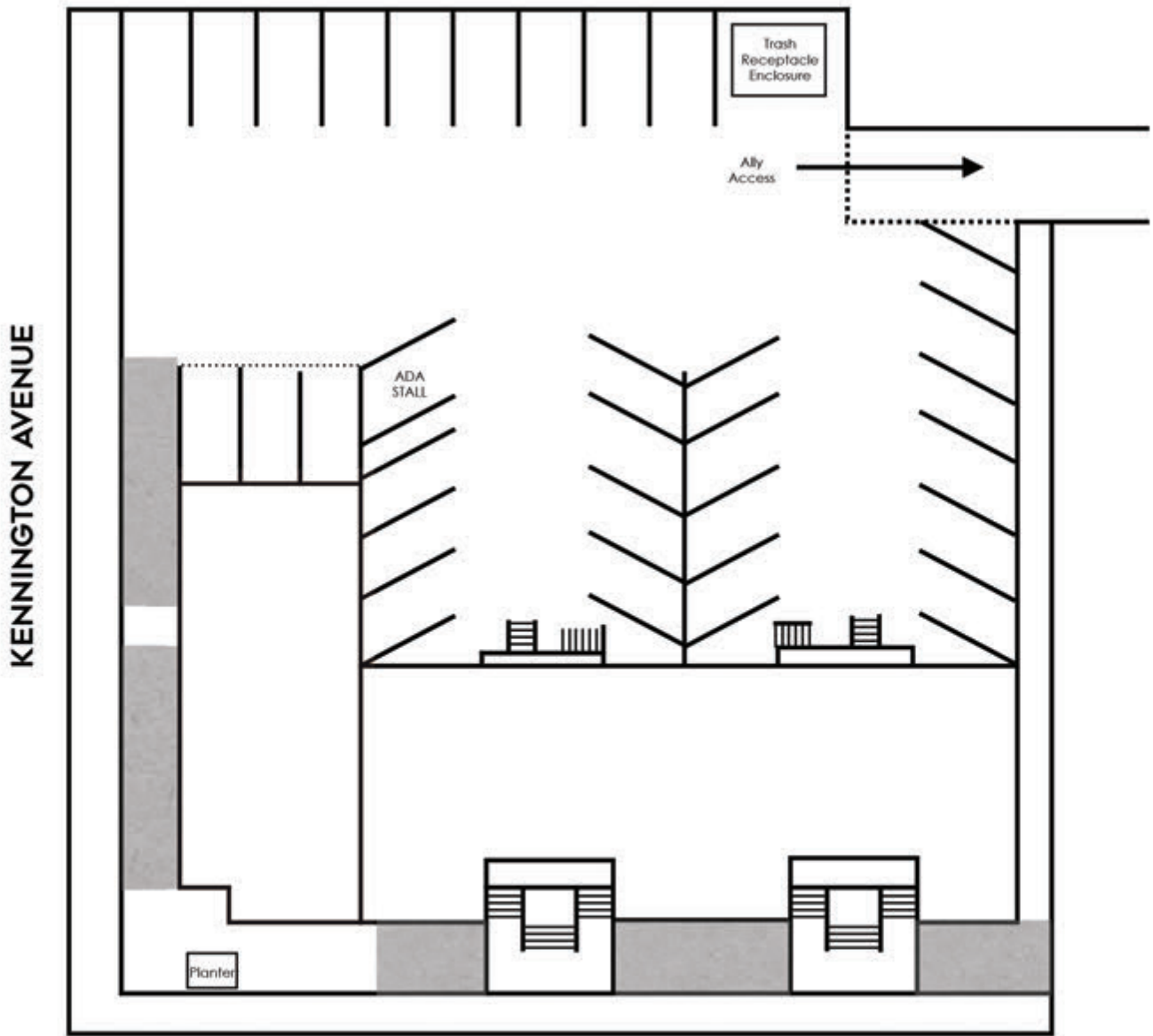


Conceptual Rendering



Site Plan / Area

1522 S. 1100 E

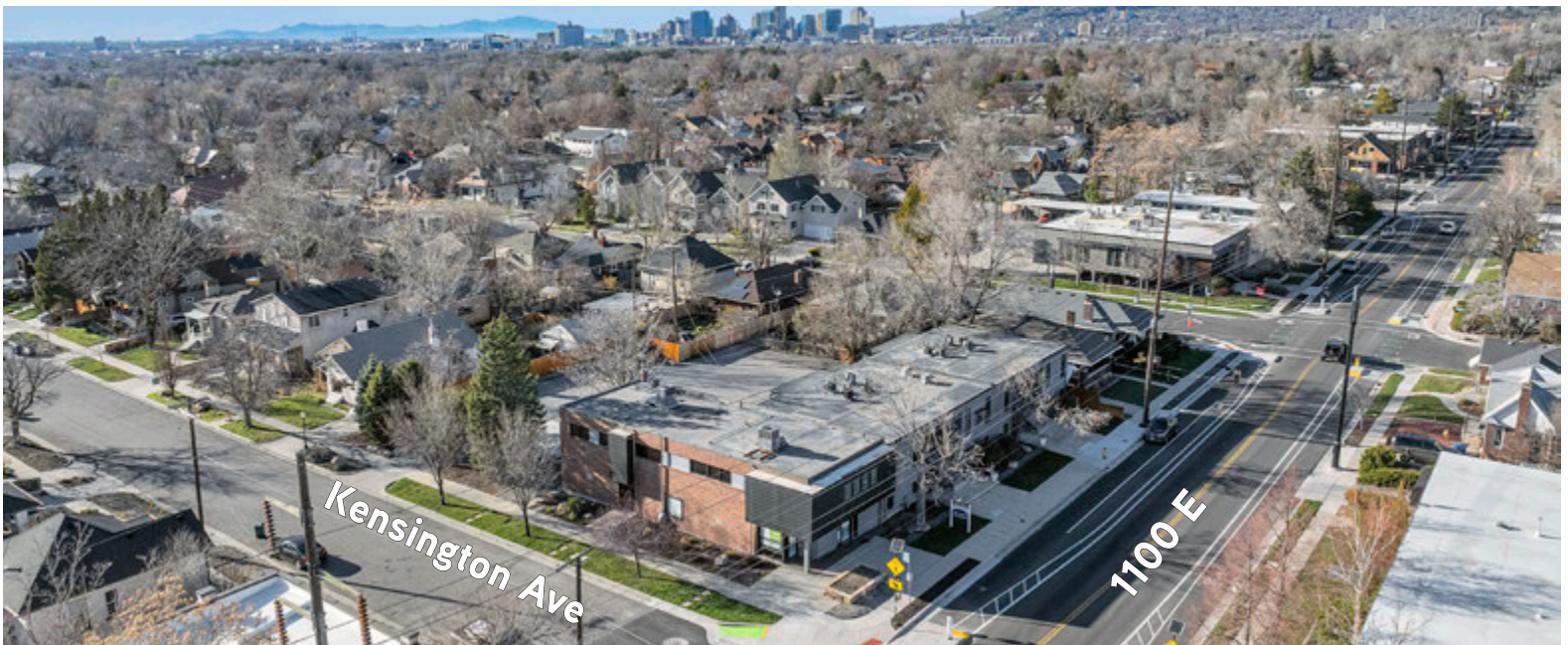
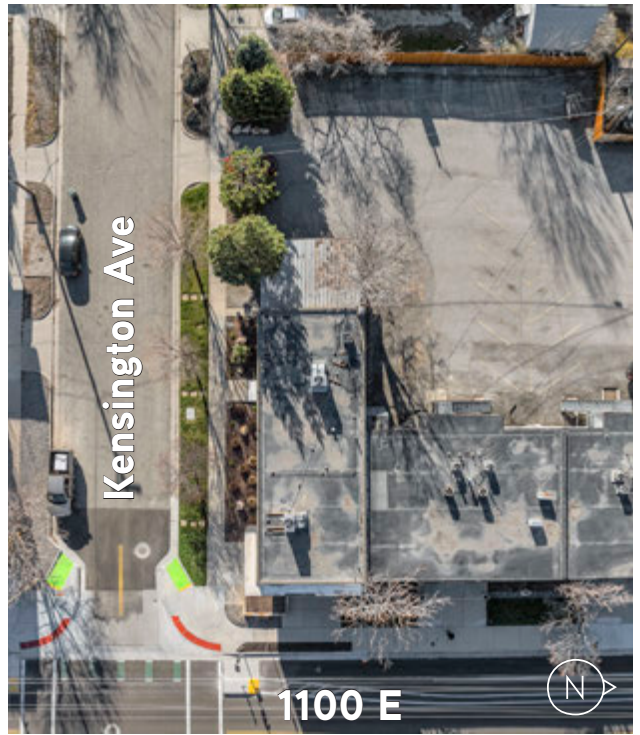


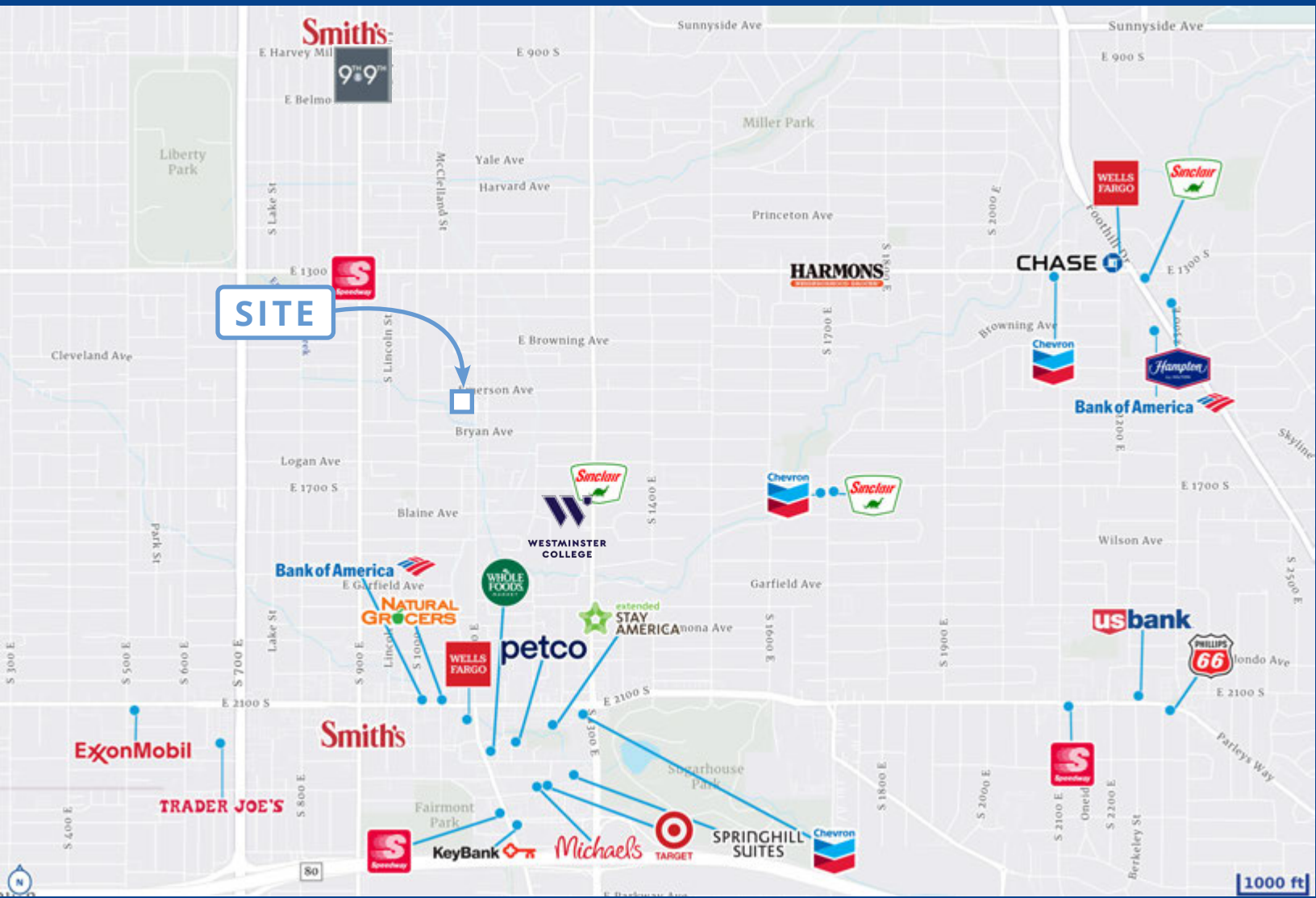
KENNINGTON AVENUE

1100 EAST

KENSINGTON OFFICE BLDG
1522 SOUTH 1100 EAST
(30) PARKING SPACES







Demographics (3 mile radius)



Population

159,356



2029 Projected Population

167,140



Average Household Income

\$124,313



Median Household Income

\$83,775



Median Age

33.2



William Riedell
801 652 1105
william.riedell@colliers.com

Toni Carter
801 809 5620
toni@tonicarter.com



**COLDWELL BANKER
REALTY**

This document has been prepared by Colliers International for advertising and general information only. Colliers International makes no guarantees, representations or warranties of any kind, expressed or implied, regarding the information including, but not limited to, warranties of content, accuracy and reliability. Any interested party should undertake their own inquiries as to the accuracy of the information. Colliers International excludes unequivocally all inferred or implied terms, conditions and warranties arising out of this document and excludes all liability for loss and damages arising therefrom. This publication is the copyrighted property of Colliers International and/or its licensor(s). ©2024. All rights reserved.