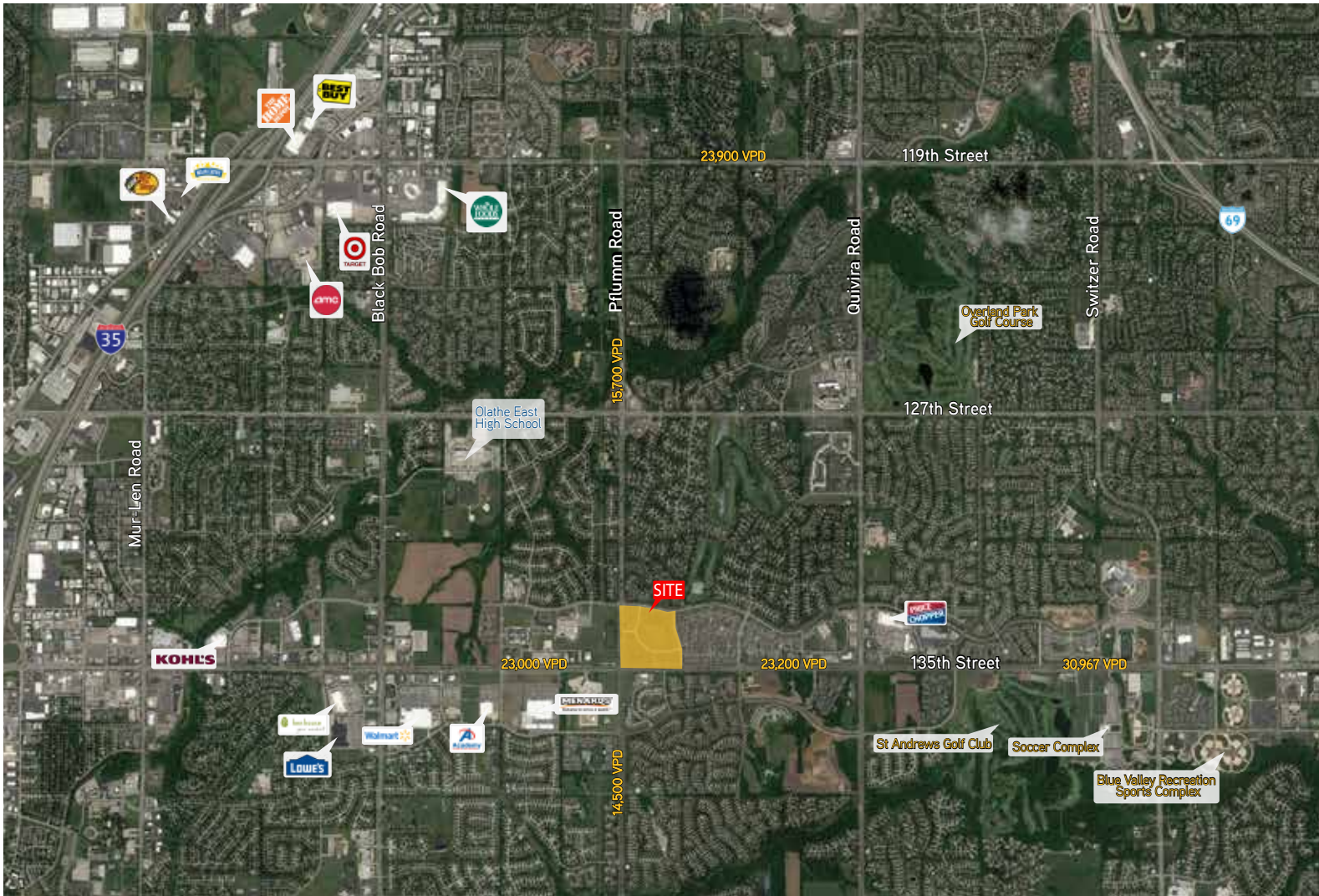




CRYSTAL SPRINGS

30.0± ACRES



DEMOGRAPHICS

2017 Demographics Report

	3-Mile Radius	5-Mile Radius	10-Mile Radius
Total Population	11,841	96,624	222,248
Projected Annual Growth 2017 to 2022	1.0%	1.0%	1.0%
Household Change 2015 to 2020	12.8%	6.0%	5.8%
Owner-Occupied Housing Units	69.1%	68.8%	66.2%
Renter-Occupied Housing Units	30.9%	31.2%	33.8%
Estimated Median Age	34.8	34.9	35.7
Per Capita Income	\$44,836	\$42,312	\$40,452
Median Household Income	\$121,501	\$102,051	\$94,487

Accelerating success.

This document has been prepared by Colliers International for advertising and general information only. Colliers International makes no guarantees, representations or warranties of any kind, expressed or implied, regarding the information including, but not limited to, warranties of content, accuracy and reliability. Any interested party should undertake their own inquiries as to the accuracy of the information. Colliers International excludes unequivocally all inferred or implied terms, conditions and warranties arising out of this document and excludes all liability for loss and damages arising there from. This publication is the copyrighted property of Colliers International and/or its licensor(s). ©2017. All rights reserved.