

Site Map

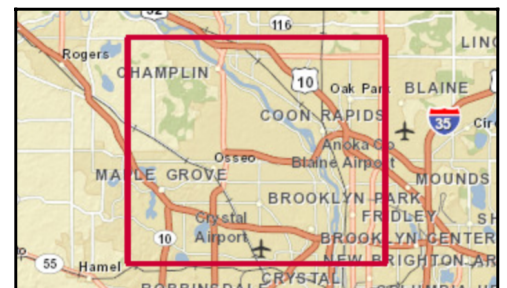
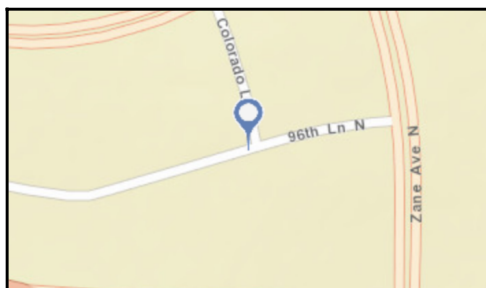
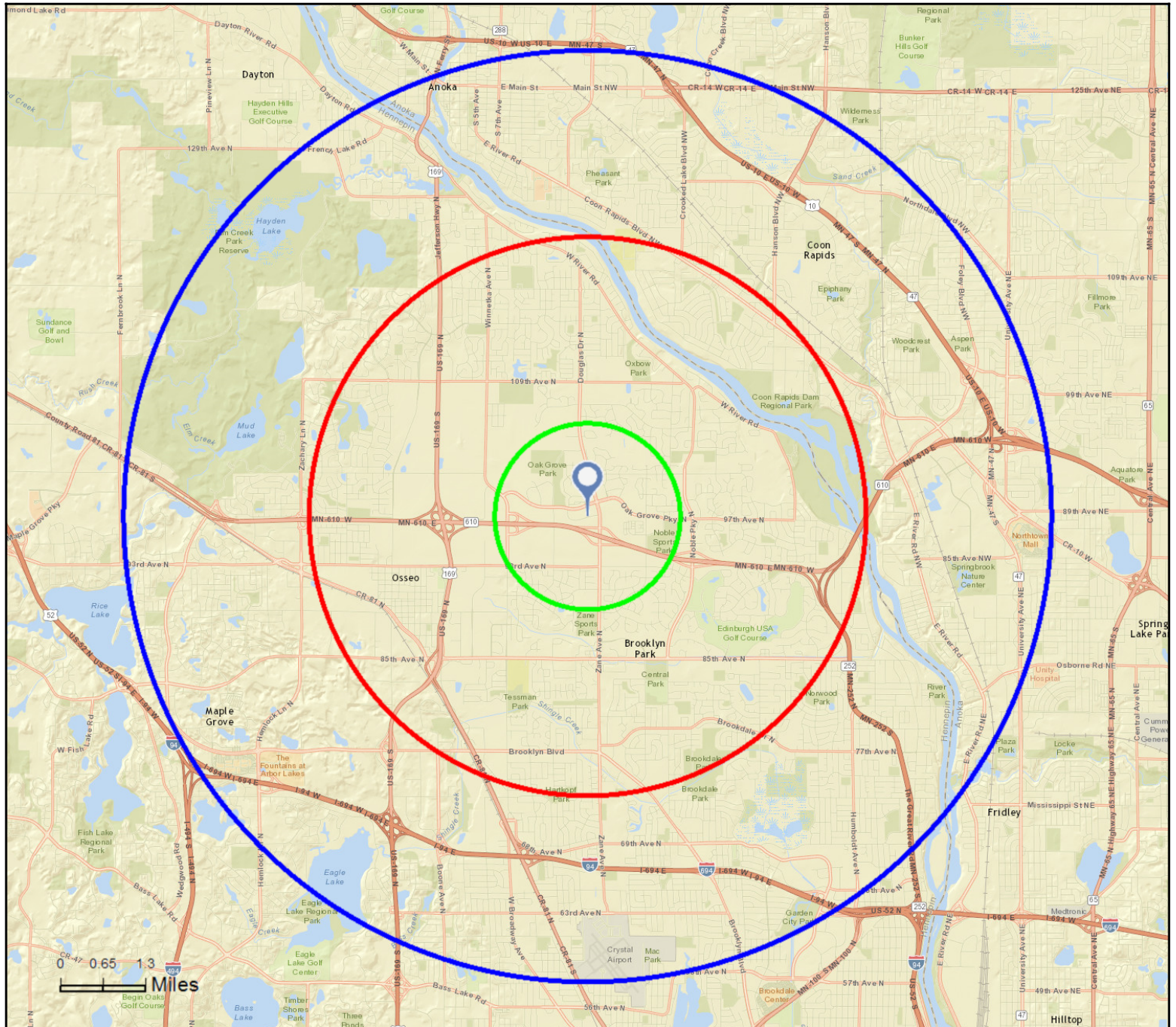
6001 96th Ln N, Brooklyn Park, Minnesota, 55445

Rings: 1, 3, 5 mile radii

Prepared by Sam Svendahl

Latitude: 45.13086

Longitude: -93.35876





Executive Summary

6001 96th Ln N, Brooklyn Park, Minnesota, 55445
Rings: 1, 3, 5 mile radii

Prepared by Sam Svendahl

Latitude: 45.13086
Longitude: -93.35876

	1 mile	3 miles	5 miles
Population			
2000 Population	3,107	70,677	194,189
2010 Population	5,514	77,327	201,885
2015 Population	6,047	80,696	208,346
2020 Population	6,625	84,922	217,278
2000-2010 Annual Rate	5.90%	0.90%	0.39%
2010-2015 Annual Rate	1.77%	0.82%	0.60%
2015-2020 Annual Rate	1.84%	1.03%	0.84%
2015 Male Population	49.9%	49.1%	48.8%
2015 Female Population	50.1%	50.9%	51.2%
2015 Median Age	33.2	35.5	35.7

In the identified area, the current year population is 208,346. In 2010, the Census count in the area was 201,885. The rate of change since 2010 was 0.60% annually. The five-year projection for the population in the area is 217,278 representing a change of 0.84% annually from 2015 to 2020. Currently, the population is 48.8% male and 51.2% female.

Median Age

The median age in this area is 33.2, compared to U.S. median age of 37.9.

Race and Ethnicity

2015 White Alone	59.2%	64.0%	67.1%
2015 Black Alone	16.2%	17.2%	15.9%
2015 American Indian/Alaska Native Alone	0.2%	0.5%	0.6%
2015 Asian Alone	20.3%	13.1%	10.1%
2015 Pacific Islander Alone	0.0%	0.1%	0.0%
2015 Other Race	1.1%	1.8%	2.6%
2015 Two or More Races	2.9%	3.5%	3.6%
2015 Hispanic Origin (Any Race)	2.2%	3.9%	5.3%

Persons of Hispanic origin represent 5.3% of the population in the identified area compared to 17.6% of the U.S. population. Persons of Hispanic Origin may be of any race. The Diversity Index, which measures the probability that two people from the same area will be from different race/ethnic groups, is 56.3 in the identified area, compared to 63.0 for the U.S. as a whole.

Households

2000 Households	984	24,824	71,632
2010 Households	1,805	27,092	74,637
2015 Total Households	1,986	28,314	77,275
2020 Total Households	2,179	29,788	80,605
2000-2010 Annual Rate	6.25%	0.88%	0.41%
2010-2015 Annual Rate	1.84%	0.84%	0.66%
2015-2020 Annual Rate	1.87%	1.02%	0.85%
2015 Average Household Size	3.04	2.84	2.68

The household count in this area has changed from 74,637 in 2010 to 77,275 in the current year, a change of 0.66% annually. The five-year projection of households is 80,605, a change of 0.85% annually from the current year total. Average household size is currently 2.68, compared to 2.69 in the year 2010. The number of families in the current year is 53,250 in the specified area.

Data Note: Income is expressed in current dollars

Source: U.S. Census Bureau, Census 2010 Summary File 1. Esri forecasts for 2015 and 2020. Esri converted Census 2000 data into 2010 geography.

February 29, 2016



Executive Summary

6001 96th Ln N, Brooklyn Park, Minnesota, 55445
Rings: 1, 3, 5 mile radii

Prepared by Sam Svendahl

Latitude: 45.13086
Longitude: -93.35876

	1 mile	3 miles	5 miles
Median Household Income			
2015 Median Household Income	\$91,953	\$76,040	\$65,037
2020 Median Household Income	\$100,436	\$83,895	\$76,276
2015-2020 Annual Rate	1.78%	1.99%	3.24%
Average Household Income			
2015 Average Household Income	\$101,410	\$86,050	\$77,816
2020 Average Household Income	\$114,571	\$97,216	\$87,767
2015-2020 Annual Rate	2.47%	2.47%	2.44%
Per Capita Income			
2015 Per Capita Income	\$31,857	\$30,134	\$28,913
2020 Per Capita Income	\$35,982	\$34,031	\$32,609
2015-2020 Annual Rate	2.47%	2.46%	2.44%
Households by Income			

Current median household income is \$65,037 in the area, compared to \$53,217 for all U.S. households. Median household income is projected to be \$76,276 in five years, compared to \$60,683 for all U.S. households

Current average household income is \$77,816 in this area, compared to \$74,699 for all U.S. households. Average household income is projected to be \$87,767 in five years, compared to \$84,910 for all U.S. households

Current per capita income is \$28,913 in the area, compared to the U.S. per capita income of \$28,597. The per capita income is projected to be \$32,609 in five years, compared to \$32,501 for all U.S. households

Housing			
2000 Total Housing Units	997	25,141	72,544
2000 Owner Occupied Housing Units	962	20,450	54,465
2000 Renter Occupied Housing Units	23	4,374	17,167
2000 Vacant Housing Units	12	317	912
2010 Total Housing Units	1,882	28,416	78,390
2010 Owner Occupied Housing Units	1,643	21,875	54,991
2010 Renter Occupied Housing Units	162	5,217	19,646
2010 Vacant Housing Units	77	1,324	3,753
2015 Total Housing Units	2,020	29,581	81,189
2015 Owner Occupied Housing Units	1,805	22,820	56,637
2015 Renter Occupied Housing Units	181	5,493	20,638
2015 Vacant Housing Units	34	1,267	3,914
2020 Total Housing Units	2,219	31,143	84,850
2020 Owner Occupied Housing Units	1,979	23,996	59,085
2020 Renter Occupied Housing Units	200	5,792	21,520
2020 Vacant Housing Units	40	1,355	4,245

Currently, 69.8% of the 81,189 housing units in the area are owner occupied; 25.4%, renter occupied; and 4.8% are vacant. Currently, in the U.S., 55.7% of the housing units in the area are owner occupied; 32.8% are renter occupied; and 11.6% are vacant. In 2010, there were 78,390 housing units in the area - 70.2% owner occupied, 25.1% renter occupied, and 4.8% vacant. The annual rate of change in housing units since 2010 is 1.57%. Median home value in the area is \$202,105, compared to a median home value of \$200,006 for the U.S. In five years, median value is projected to change by 2.65% annually to \$230,374.

Data Note: Income is expressed in current dollars

Source: U.S. Census Bureau, Census 2010 Summary File 1. Esri forecasts for 2015 and 2020. Esri converted Census 2000 data into 2010 geography.

February 29, 2016



2010 Census Profile

6001 96th Ln N, Brooklyn Park, Minnesota, 55445
Ring: 1 mile radius

Prepared by Sam Svendahl

Latitude: 45.13086

Longitude: -93.35876

	2000	2010	2000-2010 Annual Rate
Population	3,107	5,514	5.90%
Households	984	1,805	6.26%
Housing Units	997	1,882	6.56%
Population by Race			
Total		5,514	100.0%
Population Reporting One Race		5,366	97.3%
White		3,442	62.4%
Black		831	15.1%
American Indian		15	0.3%
Asian		1,014	18.4%
Pacific Islander		2	0.0%
Some Other Race		62	1.1%
Population Reporting Two or More Races		148	2.7%
Total Hispanic Population		117	2.1%
Population by Sex			
Male		2,746	49.8%
Female		2,768	50.2%
Population by Age			
Total		5,516	100.0%
Age 0 - 4		551	10.0%
Age 5 - 9		496	9.0%
Age 10 - 14		440	8.0%
Age 15 - 19		360	6.5%
Age 20 - 24		267	4.8%
Age 25 - 29		368	6.7%
Age 30 - 34		469	8.5%
Age 35 - 39		513	9.3%
Age 40 - 44		471	8.5%
Age 45 - 49		430	7.8%
Age 50 - 54		366	6.6%
Age 55 - 59		266	4.8%
Age 60 - 64		182	3.3%
Age 65 - 69		106	1.9%
Age 70 - 74		66	1.2%
Age 75 - 79		57	1.0%
Age 80 - 84		41	0.7%
Age 85+		65	1.2%
Age 18+		3,780	68.6%
Age 65+		335	6.1%
Median Age by Sex and Race/Hispanic Origin			
Total Population		32.9	
Male		32.4	
Female		33.5	
White Alone		35.7	
Black Alone		27.0	
American Indian Alone		32.5	
Asian Alone		30.1	
Pacific Islander Alone		25.0	
Some Other Race Alone		25.0	
Two or More Races		12.5	
Hispanic Population		21.7	

Data Note: Hispanic population can be of any race. Census 2010 medians are computed from reported data distributions.

Source: U.S. Census Bureau, Census 2010 Summary File 1. Esri converted Census 2000 data into 2010 geography.



2010 Census Profile

6001 96th Ln N, Brooklyn Park, Minnesota, 55445
Ring: 1 mile radius

Prepared by Sam Svendahl

Latitude: 45.13086
Longitude: -93.35876

Households by Type		
Total	1,805	100.0%
Households with 1 Person	254	14.1%
Households with 2+ People	1,551	85.9%
Family Households	1,458	80.8%
Husband-wife Families	1,239	68.6%
With Own Children	729	40.4%
Other Family (No Spouse Present)	219	12.1%
With Own Children	129	7.1%
Nonfamily Households	93	5.2%
All Households with Children	902	50.0%
Multigenerational Households	86	4.8%
Unmarried Partner Households	100	5.5%
Male-female	90	5.0%
Same-sex	10	0.6%
Average Household Size	3.05	
Family Households by Size		
Total	1,458	100.0%
2 People	422	28.9%
3 People	304	20.9%
4 People	408	28.0%
5 People	182	12.5%
6 People	77	5.3%
7+ People	65	4.5%
Average Family Size	3.39	
Nonfamily Households by Size		
Total	348	100.0%
1 Person	254	73.0%
2 People	74	21.3%
3 People	12	3.4%
4 People	6	1.7%
5 People	2	0.6%
6 People	0	0.0%
7+ People	0	0.0%
Average Nonfamily Size	1.30	
Population by Relationship and Household Type		
Total	5,514	100.0%
In Households	5,510	99.9%
In Family Households	5,060	91.8%
Householder	1,398	25.4%
Spouse	1,185	21.5%
Child	2,082	37.8%
Other relative	285	5.2%
Nonrelative	111	2.0%
In Nonfamily Households	450	8.2%
In Group Quarters	4	0.1%
Institutionalized Population	0	0.0%
Noninstitutionalized Population	4	0.1%

Data Note: Households with children include any households with people under age 18, related or not. Multigenerational households are families with 3 or more parent-child relationships. Unmarried partner households are usually classified as nonfamily households unless there is another member of the household related to the householder. Multigenerational and unmarried partner households are reported only to the tract level. Esri estimated block group data, which is used to estimate polygons or non-standard geography. Average family size excludes nonrelatives.

Source: U.S. Census Bureau, Census 2010 Summary File 1.



2010 Census Profile

6001 96th Ln N, Brooklyn Park, Minnesota, 55445
Ring: 1 mile radius

Prepared by Sam Svendahl

Latitude: 45.13086

Longitude: -93.35876

Family Households by Age of Householder

Total	1,458	100.0%
Householder Age 15 - 44	768	52.7%
Householder Age 45 - 54	386	26.5%
Householder Age 55 - 64	198	13.6%
Householder Age 65 - 74	62	4.3%
Householder Age 75+	44	3.0%

Nonfamily Households by Age of Householder

Total	346	100.0%
Householder Age 15 - 44	145	41.9%
Householder Age 45 - 54	65	18.8%
Householder Age 55 - 64	43	12.4%
Householder Age 65 - 74	25	7.2%
Householder Age 75+	68	19.7%

Households by Race of Householder

Total	1,804	100.0%
Householder is White Alone	1,296	71.8%
Householder is Black Alone	225	12.5%
Householder is American Indian Alone	5	0.3%
Householder is Asian Alone	242	13.4%
Householder is Pacific Islander Alone	0	0.0%
Householder is Some Other Race Alone	15	0.8%
Householder is Two or More Races	21	1.2%
Households with Hispanic Householder	30	1.7%

Husband-wife Families by Race of Householder

Total	1,239	100.0%
Householder is White Alone	886	71.5%
Householder is Black Alone	147	11.9%
Householder is American Indian Alone	2	0.2%
Householder is Asian Alone	180	14.5%
Householder is Pacific Islander Alone	0	0.0%
Householder is Some Other Race Alone	10	0.8%
Householder is Two or More Races	14	1.1%
Husband-wife Families with Hispanic Householder	21	1.7%

Other Families (No Spouse) by Race of Householder

Total	220	100.0%
Householder is White Alone	115	52.3%
Householder is Black Alone	50	22.7%
Householder is American Indian Alone	3	1.4%
Householder is Asian Alone	45	20.5%
Householder is Pacific Islander Alone	0	0.0%
Householder is Some Other Race Alone	3	1.4%
Householder is Two or More Races	4	1.8%
Other Families with Hispanic Householder	5	2.3%

Nonfamily Households by Race of Householder

Total	347	100.0%
Householder is White Alone	295	85.0%
Householder is Black Alone	29	8.4%
Householder is American Indian Alone	1	0.3%
Householder is Asian Alone	17	4.9%
Householder is Pacific Islander Alone	0	0.0%
Householder is Some Other Race Alone	2	0.6%
Householder is Two or More Races	3	0.9%
Nonfamily Households with Hispanic Householder	4	1.2%

Source: U.S. Census Bureau, Census 2010 Summary File 1.



2010 Census Profile

6001 96th Ln N, Brooklyn Park, Minnesota, 55445
Ring: 1 mile radius

Prepared by Sam Svendahl

Latitude: 45.13086

Longitude: -93.35876

Total Housing Units by Occupancy

Total	1,880	100.0%
Occupied Housing Units	1,805	96.0%
Vacant Housing Units		
For Rent	8	0.4%
Rented, not Occupied	0	0.0%
For Sale Only	42	2.2%
Sold, not Occupied	5	0.3%
For Seasonal/Recreational/Occasional Use	4	0.2%
For Migrant Workers	0	0.0%
Other Vacant	16	0.9%
Total Vacancy Rate	4.1%	

Households by Tenure and Mortgage Status

Total	1,805	100.0%
Owner Occupied	1,643	91.0%
Owned with a Mortgage/Loan	1,523	84.4%
Owned Free and Clear	120	6.6%
Average Household Size	3.10	
Renter Occupied	162	9.0%
Average Household Size	2.56	

Owner-occupied Housing Units by Race of Householder

Total	1,643	100.0%
Householder is White Alone	1,180	71.8%
Householder is Black Alone	196	11.9%
Householder is American Indian Alone	4	0.2%
Householder is Asian Alone	231	14.1%
Householder is Pacific Islander Alone	0	0.0%
Householder is Some Other Race Alone	14	0.9%
Householder is Two or More Races	18	1.1%
Owner-occupied Housing Units with Hispanic Householder	28	1.7%

Renter-occupied Housing Units by Race of Householder

Total	162	100.0%
Householder is White Alone	116	71.6%
Householder is Black Alone	29	17.9%
Householder is American Indian Alone	1	0.6%
Householder is Asian Alone	10	6.2%
Householder is Pacific Islander Alone	0	0.0%
Householder is Some Other Race Alone	2	1.2%
Householder is Two or More Races	4	2.5%
Renter-occupied Housing Units with Hispanic Householder	3	1.9%

Average Household Size by Race/Hispanic Origin of Householder

Householder is White Alone	2.69
Householder is Black Alone	3.80
Householder is American Indian Alone	4.00
Householder is Asian Alone	4.21
Householder is Pacific Islander Alone	0.00
Householder is Some Other Race Alone	3.60
Householder is Two or More Races	3.52
Householder is Hispanic	3.53

Source: U.S. Census Bureau, Census 2010 Summary File 1.



2010 Census Profile

6001 96th Ln N, Brooklyn Park, Minnesota, 55445
Ring: 3 mile radius

Prepared by Sam Svendahl

Latitude: 45.13086

Longitude: -93.35876

	2000	2010	2000-2010 Annual Rate
Population	70,677	77,327	0.90%
Households	24,824	27,092	0.88%
Housing Units	25,141	28,416	1.23%
Population by Race			
Total		77,328	100.0%
Population Reporting One Race		74,837	96.8%
White		51,573	66.7%
Black		12,460	16.1%
American Indian		378	0.5%
Asian		9,066	11.7%
Pacific Islander		40	0.1%
Some Other Race		1,320	1.7%
Population Reporting Two or More Races		2,491	3.2%
Total Hispanic Population		2,893	3.7%
Population by Sex			
Male		38,016	49.2%
Female		39,311	50.8%
Population by Age			
Total		77,329	100.0%
Age 0 - 4		5,966	7.7%
Age 5 - 9		5,863	7.6%
Age 10 - 14		5,856	7.6%
Age 15 - 19		5,757	7.4%
Age 20 - 24		4,700	6.1%
Age 25 - 29		5,295	6.8%
Age 30 - 34		5,368	6.9%
Age 35 - 39		5,258	6.8%
Age 40 - 44		5,524	7.1%
Age 45 - 49		6,310	8.2%
Age 50 - 54		6,020	7.8%
Age 55 - 59		4,956	6.4%
Age 60 - 64		3,837	5.0%
Age 65 - 69		2,345	3.0%
Age 70 - 74		1,545	2.0%
Age 75 - 79		1,175	1.5%
Age 80 - 84		836	1.1%
Age 85+		716	0.9%
Age 18+		55,922	72.3%
Age 65+		6,617	8.6%
Median Age by Sex and Race/Hispanic Origin			
Total Population		34.9	
Male		33.8	
Female		35.9	
White Alone		40.8	
Black Alone		25.7	
American Indian Alone		28.9	
Asian Alone		27.3	
Pacific Islander Alone		25.5	
Some Other Race Alone		25.2	
Two or More Races		14.1	
Hispanic Population		23.0	

Data Note: Hispanic population can be of any race. Census 2010 medians are computed from reported data distributions.

Source: U.S. Census Bureau, Census 2010 Summary File 1. Esri converted Census 2000 data into 2010 geography.



2010 Census Profile

6001 96th Ln N, Brooklyn Park, Minnesota, 55445
Ring: 3 mile radius

Prepared by Sam Svendahl

Latitude: 45.13086
Longitude: -93.35876

Households by Type		
Total	27,092	100.0%
Households with 1 Person	5,563	20.5%
Households with 2+ People	21,529	79.5%
Family Households	20,043	74.0%
Husband-wife Families	15,362	56.7%
With Own Children	7,217	26.6%
Other Family (No Spouse Present)	4,681	17.3%
With Own Children	2,707	10.0%
Nonfamily Households	1,486	5.5%
All Households with Children	10,788	39.8%
Multigenerational Households	1,197	4.4%
Unmarried Partner Households	1,760	6.5%
Male-female	1,601	5.9%
Same-sex	159	0.6%
Average Household Size	2.84	
Family Households by Size		
Total	20,043	100.0%
2 People	7,295	36.4%
3 People	4,535	22.6%
4 People	4,419	22.0%
5 People	2,076	10.4%
6 People	896	4.5%
7+ People	822	4.1%
Average Family Size	3.30	
Nonfamily Households by Size		
Total	7,049	100.0%
1 Person	5,563	78.9%
2 People	1,187	16.8%
3 People	191	2.7%
4 People	77	1.1%
5 People	16	0.2%
6 People	6	0.1%
7+ People	9	0.1%
Average Nonfamily Size	1.27	
Population by Relationship and Household Type		
Total	77,327	100.0%
In Households	76,946	99.5%
In Family Households	67,993	87.9%
Householder	19,956	25.8%
Spouse	15,301	19.8%
Child	26,928	34.8%
Other relative	3,951	5.1%
Nonrelative	1,856	2.4%
In Nonfamily Households	8,952	11.6%
In Group Quarters	381	0.5%
Institutionalized Population	196	0.3%
Noninstitutionalized Population	185	0.2%

Data Note: Households with children include any households with people under age 18, related or not. Multigenerational households are families with 3 or more parent-child relationships. Unmarried partner households are usually classified as nonfamily households unless there is another member of the household related to the householder. Multigenerational and unmarried partner households are reported only to the tract level. Esri estimated block group data, which is used to estimate polygons or non-standard geography. Average family size excludes nonrelatives.

Source: U.S. Census Bureau, Census 2010 Summary File 1.



2010 Census Profile

6001 96th Ln N, Brooklyn Park, Minnesota, 55445
Ring: 3 mile radius

Prepared by Sam Svendahl

Latitude: 45.13086

Longitude: -93.35876

Family Households by Age of Householder		
Total	20,044	100.0%
Householder Age 15 - 44	8,553	42.7%
Householder Age 45 - 54	5,438	27.1%
Householder Age 55 - 64	3,725	18.6%
Householder Age 65 - 74	1,523	7.6%
Householder Age 75+	805	4.0%
Nonfamily Households by Age of Householder		
Total	7,050	100.0%
Householder Age 15 - 44	2,429	34.5%
Householder Age 45 - 54	1,485	21.1%
Householder Age 55 - 64	1,359	19.3%
Householder Age 65 - 74	819	11.6%
Householder Age 75+	958	13.6%
Households by Race of Householder		
Total	27,092	100.0%
Householder is White Alone	20,443	75.5%
Householder is Black Alone	3,758	13.9%
Householder is American Indian Alone	120	0.4%
Householder is Asian Alone	2,030	7.5%
Householder is Pacific Islander Alone	7	0.0%
Householder is Some Other Race Alone	309	1.1%
Householder is Two or More Races	425	1.6%
Households with Hispanic Householder	654	2.4%
Husband-wife Families by Race of Householder		
Total	15,361	100.0%
Householder is White Alone	12,075	78.6%
Householder is Black Alone	1,510	9.8%
Householder is American Indian Alone	51	0.3%
Householder is Asian Alone	1,352	8.8%
Householder is Pacific Islander Alone	3	0.0%
Householder is Some Other Race Alone	176	1.1%
Householder is Two or More Races	194	1.3%
Husband-wife Families with Hispanic Householder	374	2.4%
Other Families (No Spouse) by Race of Householder		
Total	4,680	100.0%
Householder is White Alone	2,559	54.7%
Householder is Black Alone	1,368	29.2%
Householder is American Indian Alone	44	0.9%
Householder is Asian Alone	489	10.4%
Householder is Pacific Islander Alone	2	0.0%
Householder is Some Other Race Alone	89	1.9%
Householder is Two or More Races	129	2.8%
Other Families with Hispanic Householder	176	3.8%
Nonfamily Households by Race of Householder		
Total	7,049	100.0%
Householder is White Alone	5,809	82.4%
Householder is Black Alone	879	12.5%
Householder is American Indian Alone	24	0.3%
Householder is Asian Alone	189	2.7%
Householder is Pacific Islander Alone	2	0.0%
Householder is Some Other Race Alone	44	0.6%
Householder is Two or More Races	102	1.4%
Nonfamily Households with Hispanic Householder	104	1.5%

Source: U.S. Census Bureau, Census 2010 Summary File 1.



2010 Census Profile

6001 96th Ln N, Brooklyn Park, Minnesota, 55445
Ring: 3 mile radius

Prepared by Sam Svendahl

Latitude: 45.13086

Longitude: -93.35876

Total Housing Units by Occupancy

Total	28,413	100.0%
Occupied Housing Units	27,092	95.4%
Vacant Housing Units		
For Rent	444	1.6%
Rented, not Occupied	15	0.1%
For Sale Only	489	1.7%
Sold, not Occupied	53	0.2%
For Seasonal/Recreational/Occasional Use	67	0.2%
For Migrant Workers	0	0.0%
Other Vacant	253	0.9%
Total Vacancy Rate	4.7%	

Households by Tenure and Mortgage Status

Total	27,092	100.0%
Owner Occupied	21,875	80.7%
Owned with a Mortgage/Loan	18,491	68.3%
Owned Free and Clear	3,383	12.5%
Average Household Size	2.90	
Renter Occupied	5,217	19.3%
Average Household Size	2.58	

Owner-occupied Housing Units by Race of Householder

Total	21,875	100.0%
Householder is White Alone	17,766	81.2%
Householder is Black Alone	1,866	8.5%
Householder is American Indian Alone	85	0.4%
Householder is Asian Alone	1,698	7.8%
Householder is Pacific Islander Alone	3	0.0%
Householder is Some Other Race Alone	185	0.8%
Householder is Two or More Races	272	1.2%
Owner-occupied Housing Units with Hispanic Householder	413	1.9%

Renter-occupied Housing Units by Race of Householder

Total	5,217	100.0%
Householder is White Alone	2,677	51.3%
Householder is Black Alone	1,892	36.3%
Householder is American Indian Alone	35	0.7%
Householder is Asian Alone	332	6.4%
Householder is Pacific Islander Alone	4	0.1%
Householder is Some Other Race Alone	124	2.4%
Householder is Two or More Races	153	2.9%
Renter-occupied Housing Units with Hispanic Householder	240	4.6%

Average Household Size by Race/Hispanic Origin of Householder

Householder is White Alone	2.57
Householder is Black Alone	3.32
Householder is American Indian Alone	3.22
Householder is Asian Alone	4.40
Householder is Pacific Islander Alone	4.43
Householder is Some Other Race Alone	4.08
Householder is Two or More Races	3.10
Householder is Hispanic	3.93

Source: U.S. Census Bureau, Census 2010 Summary File 1.



2010 Census Profile

6001 96th Ln N, Brooklyn Park, Minnesota, 55445
Ring: 5 mile radius

Prepared by Sam Svendahl

Latitude: 45.13086

Longitude: -93.35876

	2000	2010	2000-2010 Annual Rate
Population	194,189	201,885	0.39%
Households	71,632	74,637	0.41%
Housing Units	72,544	78,390	0.78%
Population by Race			
Total		201,885	100.0%
Population Reporting One Race		195,238	96.7%
White		141,165	69.9%
Black		29,476	14.6%
American Indian		1,188	0.6%
Asian		18,282	9.1%
Pacific Islander		86	0.0%
Some Other Race		5,041	2.5%
Population Reporting Two or More Races		6,647	3.3%
Total Hispanic Population		10,092	5.0%
Population by Sex			
Male		98,588	48.8%
Female		103,297	51.2%
Population by Age			
Total		201,884	100.0%
Age 0 - 4		15,299	7.6%
Age 5 - 9		14,426	7.1%
Age 10 - 14		14,043	7.0%
Age 15 - 19		14,357	7.1%
Age 20 - 24		13,112	6.5%
Age 25 - 29		15,204	7.5%
Age 30 - 34		14,384	7.1%
Age 35 - 39		13,358	6.6%
Age 40 - 44		13,717	6.8%
Age 45 - 49		15,832	7.8%
Age 50 - 54		15,463	7.7%
Age 55 - 59		12,551	6.2%
Age 60 - 64		9,948	4.9%
Age 65 - 69		6,607	3.3%
Age 70 - 74		4,593	2.3%
Age 75 - 79		3,781	1.9%
Age 80 - 84		2,703	1.3%
Age 85+		2,507	1.2%
Age 18+		149,039	73.8%
Age 65+		20,191	10.0%
Median Age by Sex and Race/Hispanic Origin			
Total Population		35.0	
Male		34.0	
Female		36.2	
White Alone		41.0	
Black Alone		25.4	
American Indian Alone		31.0	
Asian Alone		26.4	
Pacific Islander Alone		26.7	
Some Other Race Alone		24.5	
Two or More Races		14.2	
Hispanic Population		23.4	

Data Note: Hispanic population can be of any race. Census 2010 medians are computed from reported data distributions.

Source: U.S. Census Bureau, Census 2010 Summary File 1. Esri converted Census 2000 data into 2010 geography.



2010 Census Profile

6001 96th Ln N, Brooklyn Park, Minnesota, 55445
Ring: 5 mile radius

Prepared by Sam Svendahl

Latitude: 45.13086
Longitude: -93.35876

Households by Type		
Total	74,637	100.0%
Households with 1 Person	18,053	24.2%
Households with 2+ People	56,584	75.8%
Family Households	51,737	69.3%
Husband-wife Families	37,656	50.5%
With Own Children	16,674	22.3%
Other Family (No Spouse Present)	14,081	18.9%
With Own Children	8,207	11.0%
Nonfamily Households	4,847	6.5%
All Households with Children	27,175	36.4%
Multigenerational Households	2,921	3.9%
Unmarried Partner Households	5,498	7.4%
Male-female	5,049	6.8%
Same-sex	449	0.6%
Average Household Size	2.69	
Family Households by Size		
Total	51,736	100.0%
2 People	20,100	38.9%
3 People	12,012	23.2%
4 People	10,673	20.6%
5 People	4,965	9.6%
6 People	2,147	4.2%
7+ People	1,839	3.6%
Average Family Size	3.21	
Nonfamily Households by Size		
Total	22,901	100.0%
1 Person	18,053	78.8%
2 People	3,963	17.3%
3 People	585	2.6%
4 People	234	1.0%
5 People	44	0.2%
6 People	9	0.0%
7+ People	13	0.1%
Average Nonfamily Size	1.27	
Population by Relationship and Household Type		
Total	201,885	100.0%
In Households	200,682	99.4%
In Family Households	171,606	85.0%
Householder	51,733	25.6%
Spouse	37,638	18.6%
Child	67,229	33.3%
Other relative	9,700	4.8%
Nonrelative	5,305	2.6%
In Nonfamily Households	29,076	14.4%
In Group Quarters	1,203	0.6%
Institutionalized Population	708	0.4%
Noninstitutionalized Population	495	0.2%

Data Note: Households with children include any households with people under age 18, related or not. Multigenerational households are families with 3 or more parent-child relationships. Unmarried partner households are usually classified as nonfamily households unless there is another member of the household related to the householder. Multigenerational and unmarried partner households are reported only to the tract level. Esri estimated block group data, which is used to estimate polygons or non-standard geography. Average family size excludes nonrelatives.

Source: U.S. Census Bureau, Census 2010 Summary File 1.



2010 Census Profile

6001 96th Ln N, Brooklyn Park, Minnesota, 55445
Ring: 5 mile radius

Prepared by Sam Svendahl

Latitude: 45.13086

Longitude: -93.35876

Family Households by Age of Householder

Total	51,738	100.0%
Householder Age 15 - 44	22,460	43.4%
Householder Age 45 - 54	13,299	25.7%
Householder Age 55 - 64	9,046	17.5%
Householder Age 65 - 74	4,313	8.3%
Householder Age 75+	2,620	5.1%

Nonfamily Households by Age of Householder

Total	22,901	100.0%
Householder Age 15 - 44	8,047	35.1%
Householder Age 45 - 54	4,561	19.9%
Householder Age 55 - 64	4,230	18.5%
Householder Age 65 - 74	2,578	11.3%
Householder Age 75+	3,485	15.2%

Households by Race of Householder

Total	74,638	100.0%
Householder is White Alone	58,610	78.5%
Householder is Black Alone	9,216	12.3%
Householder is American Indian Alone	395	0.5%
Householder is Asian Alone	4,093	5.5%
Householder is Pacific Islander Alone	19	0.0%
Householder is Some Other Race Alone	1,150	1.5%
Householder is Two or More Races	1,155	1.5%
Households with Hispanic Householder	2,296	3.1%

Husband-wife Families by Race of Householder

Total	37,655	100.0%
Householder is White Alone	30,583	81.2%
Householder is Black Alone	3,157	8.4%
Householder is American Indian Alone	167	0.4%
Householder is Asian Alone	2,611	6.9%
Householder is Pacific Islander Alone	6	0.0%
Householder is Some Other Race Alone	656	1.7%
Householder is Two or More Races	475	1.3%
Husband-wife Families with Hispanic Householder	1,255	3.3%

Other Families (No Spouse) by Race of Householder

Total	14,080	100.0%
Householder is White Alone	8,484	60.3%
Householder is Black Alone	3,692	26.2%
Householder is American Indian Alone	138	1.0%
Householder is Asian Alone	1,029	7.3%
Householder is Pacific Islander Alone	7	0.1%
Householder is Some Other Race Alone	354	2.5%
Householder is Two or More Races	376	2.7%
Other Families with Hispanic Householder	663	4.7%

Nonfamily Households by Race of Householder

Total	22,900	100.0%
Householder is White Alone	19,543	85.3%
Householder is Black Alone	2,367	10.3%
Householder is American Indian Alone	90	0.4%
Householder is Asian Alone	452	2.0%
Householder is Pacific Islander Alone	5	0.0%
Householder is Some Other Race Alone	139	0.6%
Householder is Two or More Races	304	1.3%
Nonfamily Households with Hispanic Householder	378	1.7%

Source: U.S. Census Bureau, Census 2010 Summary File 1.



2010 Census Profile

6001 96th Ln N, Brooklyn Park, Minnesota, 55445
Ring: 5 mile radius

Prepared by Sam Svendahl

Latitude: 45.13086

Longitude: -93.35876

Total Housing Units by Occupancy

Total	78,468	100.0%
Occupied Housing Units	74,637	95.1%
Vacant Housing Units		
For Rent	1,547	2.0%
Rented, not Occupied	66	0.1%
For Sale Only	1,129	1.4%
Sold, not Occupied	168	0.2%
For Seasonal/Recreational/Occasional Use	163	0.2%
For Migrant Workers	1	0.0%
Other Vacant	757	1.0%
Total Vacancy Rate	4.8%	

Households by Tenure and Mortgage Status

Total	74,637	100.0%
Owner Occupied	54,991	73.7%
Owned with a Mortgage/Loan	45,113	60.4%
Owned Free and Clear	9,878	13.2%
Average Household Size	2.77	
Renter Occupied	19,646	26.3%
Average Household Size	2.47	

Owner-occupied Housing Units by Race of Householder

Total	54,991	100.0%
Householder is White Alone	47,019	85.5%
Householder is Black Alone	3,410	6.2%
Householder is American Indian Alone	242	0.4%
Householder is Asian Alone	3,190	5.8%
Householder is Pacific Islander Alone	10	0.0%
Householder is Some Other Race Alone	488	0.9%
Householder is Two or More Races	632	1.1%
Owner-occupied Housing Units with Hispanic Householder	1,139	2.1%

Renter-occupied Housing Units by Race of Householder

Total	19,647	100.0%
Householder is White Alone	11,591	59.0%
Householder is Black Alone	5,807	29.6%
Householder is American Indian Alone	153	0.8%
Householder is Asian Alone	903	4.6%
Householder is Pacific Islander Alone	8	0.0%
Householder is Some Other Race Alone	662	3.4%
Householder is Two or More Races	523	2.7%
Renter-occupied Housing Units with Hispanic Householder	1,157	5.9%

Average Household Size by Race/Hispanic Origin of Householder

Householder is White Alone	2.45
Householder is Black Alone	3.19
Householder is American Indian Alone	3.08
Householder is Asian Alone	4.38
Householder is Pacific Islander Alone	3.47
Householder is Some Other Race Alone	4.25
Householder is Two or More Races	3.09
Householder is Hispanic	3.94

Source: U.S. Census Bureau, Census 2010 Summary File 1.



Demographic and Income Profile

6001 96th Ln N, Brooklyn Park, Minnesota, 55445
Ring: 1 mile radius

Prepared by Sam Svendahl

Latitude: 45.13086
Longitude: -93.35876

Summary	Census 2010		2015		2020			
Population	5,514		6,047		6,625			
Households	1,805		1,986		2,179			
Families	1,458		1,594		1,744			
Average Household Size	3.05		3.04		3.04			
Owner Occupied Housing Units	1,643		1,805		1,979			
Renter Occupied Housing Units	162		181		200			
Median Age	32.9		33.2		33.6			
Trends: 2015 - 2020 Annual Rate	Area		State		National			
Population	1.84%		0.67%		0.75%			
Households	1.87%		0.73%		0.77%			
Families	1.81%		0.65%		0.69%			
Owner HHs	1.86%		0.71%		0.70%			
Median Household Income	1.78%		3.18%		2.66%			
Households by Income	2015			2020				
	Number		Percent	Number		Percent		
	<\$15,000		46	2.3%	43		2.0%	
	\$15,000 - \$24,999		65	3.3%	46		2.1%	
	\$25,000 - \$34,999		105	5.3%	84		3.9%	
	\$35,000 - \$49,999		163	8.2%	151		6.9%	
	\$50,000 - \$74,999		337	17.0%	355		16.3%	
	\$75,000 - \$99,999		372	18.7%	400		18.4%	
	\$100,000 - \$149,999		615	31.0%	669		30.7%	
	\$150,000 - \$199,999		185	9.3%	283		13.0%	
\$200,000+		97	4.9%	149		6.8%		
Median Household Income			\$91,953		\$100,436			
Average Household Income			\$101,410		\$114,571			
Per Capita Income			\$31,857		\$35,982			
Population by Age	Census 2010		2015		2020			
	Number	Percent	Number	Percent	Number	Percent		
	0 - 4		551	10.0%	556	9.2%	601	9.1%
	5 - 9		496	9.0%	597	9.9%	617	9.3%
	10 - 14		440	8.0%	509	8.4%	607	9.2%
	15 - 19		360	6.5%	374	6.2%	432	6.5%
	20 - 24		267	4.8%	304	5.0%	260	3.9%
	25 - 34		837	15.2%	855	14.1%	955	14.4%
	35 - 44		984	17.8%	1,026	17.0%	1,135	17.1%
	45 - 54		796	14.4%	845	14.0%	860	13.0%
	55 - 64		448	8.1%	581	9.6%	647	9.8%
	65 - 74		172	3.1%	254	4.2%	349	5.3%
	75 - 84		98	1.8%	95	1.6%	114	1.7%
	85+		65	1.2%	50	0.8%	47	0.7%
	Race and Ethnicity	Census 2010		2015		2020		
Number		Percent	Number	Percent	Number	Percent		
White Alone		3,442	62.4%	3,579	59.2%	3,683	55.6%	
Black Alone		831	15.1%	979	16.2%	1,166	17.6%	
American Indian Alone		15	0.3%	15	0.2%	17	0.3%	
Asian Alone		1,014	18.4%	1,225	20.3%	1,470	22.2%	
Pacific Islander Alone		2	0.0%	3	0.0%	4	0.1%	
Some Other Race Alone		62	1.1%	69	1.1%	78	1.2%	
Two or More Races		148	2.7%	176	2.9%	208	3.1%	
Hispanic Origin (Any Race)		117	2.1%	134	2.2%	158	2.4%	

Data Note: Income is expressed in current dollars.

Source: U.S. Census Bureau, Census 2010 Summary File 1. Esri forecasts for 2015 and 2020.

February 29, 2016



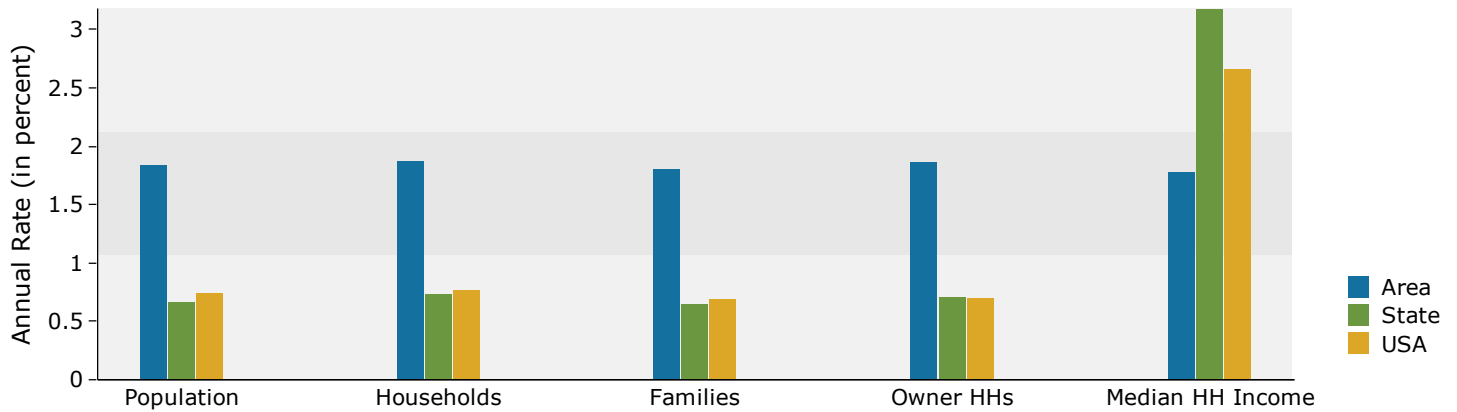
Demographic and Income Profile

6001 96th Ln N, Brooklyn Park, Minnesota, 55445
Ring: 1 mile radius

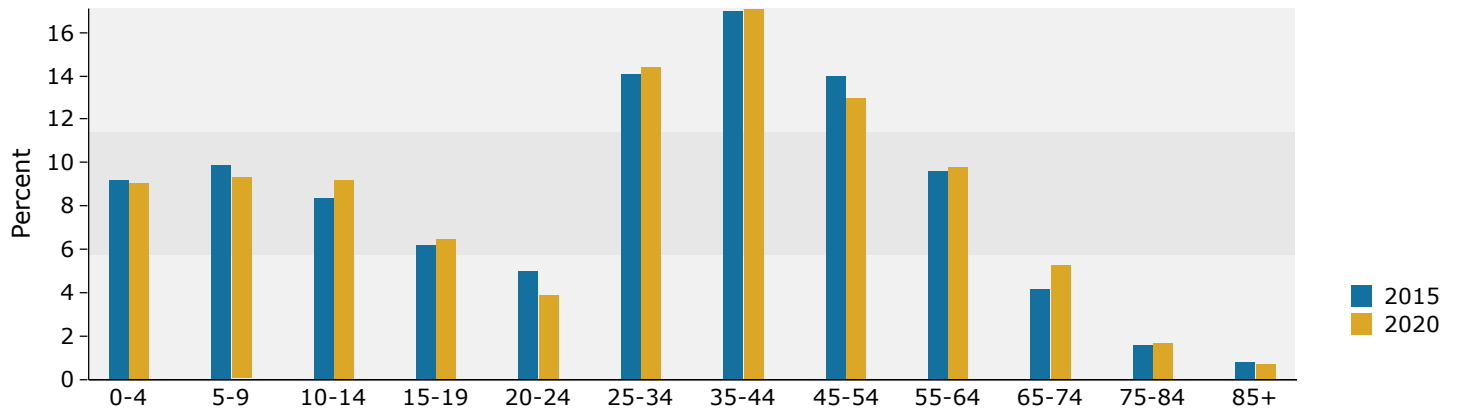
Prepared by Sam Svendahl

Latitude: 45.13086
Longitude: -93.35876

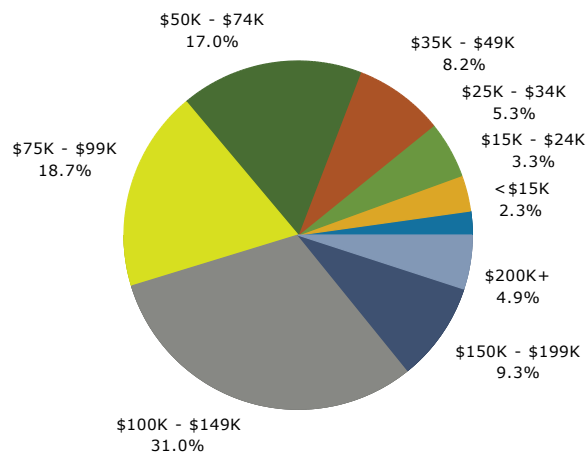
Trends 2015-2020



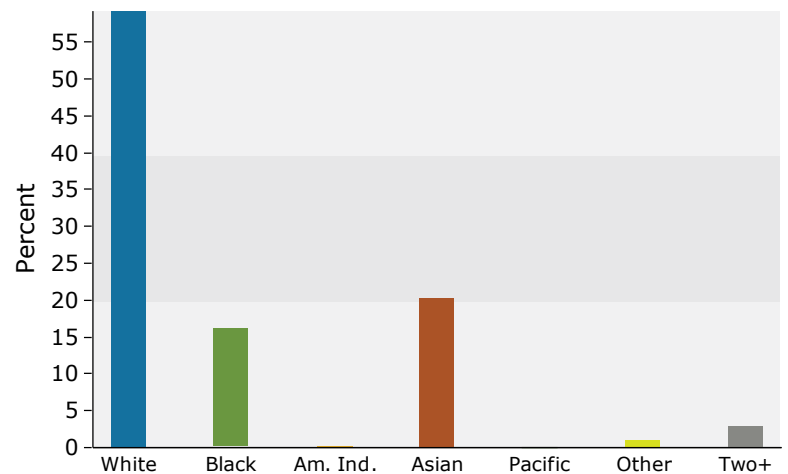
Population by Age



2015 Household Income



2015 Population by Race



2015 Percent Hispanic Origin: 2.2%

Source: U.S. Census Bureau, Census 2010 Summary File 1. Esri forecasts for 2015 and 2020.

February 29, 2016



Demographic and Income Profile

6001 96th Ln N, Brooklyn Park, Minnesota, 55445
Ring: 3 mile radius

Prepared by Sam Svendahl

Latitude: 45.13086
Longitude: -93.35876

Summary	Census 2010		2015		2020	
Population	77,327		80,696		84,922	
Households	27,092		28,314		29,788	
Families	20,043		20,841		21,861	
Average Household Size	2.84		2.84		2.84	
Owner Occupied Housing Units	21,875		22,820		23,996	
Renter Occupied Housing Units	5,217		5,493		5,792	
Median Age	34.9		35.5		36.1	
Trends: 2015 - 2020 Annual Rate	Area		State		National	
Population	1.03%		0.67%		0.75%	
Households	1.02%		0.73%		0.77%	
Families	0.96%		0.65%		0.69%	
Owner HHs	1.01%		0.71%		0.70%	
Median Household Income	1.99%		3.18%		2.66%	
Households by Income	2015		2020			
	Number	Percent	Number	Percent		
<\$15,000	1,615	5.7%	1,527	5.1%		
\$15,000 - \$24,999	1,620	5.7%	1,213	4.1%		
\$25,000 - \$34,999	1,970	7.0%	1,594	5.4%		
\$35,000 - \$49,999	3,251	11.5%	2,927	9.8%		
\$50,000 - \$74,999	5,405	19.1%	5,060	17.0%		
\$75,000 - \$99,999	5,071	17.9%	5,865	19.7%		
\$100,000 - \$149,999	6,189	21.9%	7,244	24.3%		
\$150,000 - \$199,999	2,207	7.8%	3,093	10.4%		
\$200,000+	986	3.5%	1,266	4.3%		
Median Household Income	\$76,040		\$83,895			
Average Household Income	\$86,050		\$97,216			
Per Capita Income	\$30,134		\$34,031			
Population by Age	Census 2010		2015		2020	
	Number	Percent	Number	Percent	Number	Percent
0 - 4	5,966	7.7%	5,866	7.3%	6,132	7.2%
5 - 9	5,863	7.6%	6,060	7.5%	6,033	7.1%
10 - 14	5,856	7.6%	5,844	7.2%	6,202	7.3%
15 - 19	5,757	7.4%	5,219	6.5%	5,355	6.3%
20 - 24	4,700	6.1%	5,318	6.6%	4,536	5.3%
25 - 34	10,663	13.8%	11,534	14.3%	12,859	15.1%
35 - 44	10,782	13.9%	10,602	13.1%	11,863	14.0%
45 - 54	12,330	15.9%	11,276	14.0%	9,963	11.7%
55 - 64	8,793	11.4%	10,299	12.8%	10,859	12.8%
65 - 74	3,890	5.0%	5,617	7.0%	7,263	8.6%
75 - 84	2,011	2.6%	2,222	2.8%	2,880	3.4%
85+	716	0.9%	839	1.0%	975	1.1%
Race and Ethnicity	Census 2010		2015		2020	
	Number	Percent	Number	Percent	Number	Percent
White Alone	51,573	66.7%	51,618	64.0%	51,702	60.9%
Black Alone	12,460	16.1%	13,878	17.2%	15,723	18.5%
American Indian Alone	378	0.5%	386	0.5%	396	0.5%
Asian Alone	9,066	11.7%	10,532	13.1%	12,247	14.4%
Pacific Islander Alone	40	0.1%	45	0.1%	50	0.1%
Some Other Race Alone	1,320	1.7%	1,420	1.8%	1,600	1.9%
Two or More Races	2,491	3.2%	2,818	3.5%	3,204	3.8%
Hispanic Origin (Any Race)	2,893	3.7%	3,135	3.9%	3,557	4.2%

Data Note: Income is expressed in current dollars.

Source: U.S. Census Bureau, Census 2010 Summary File 1. Esri forecasts for 2015 and 2020.

February 29, 2016



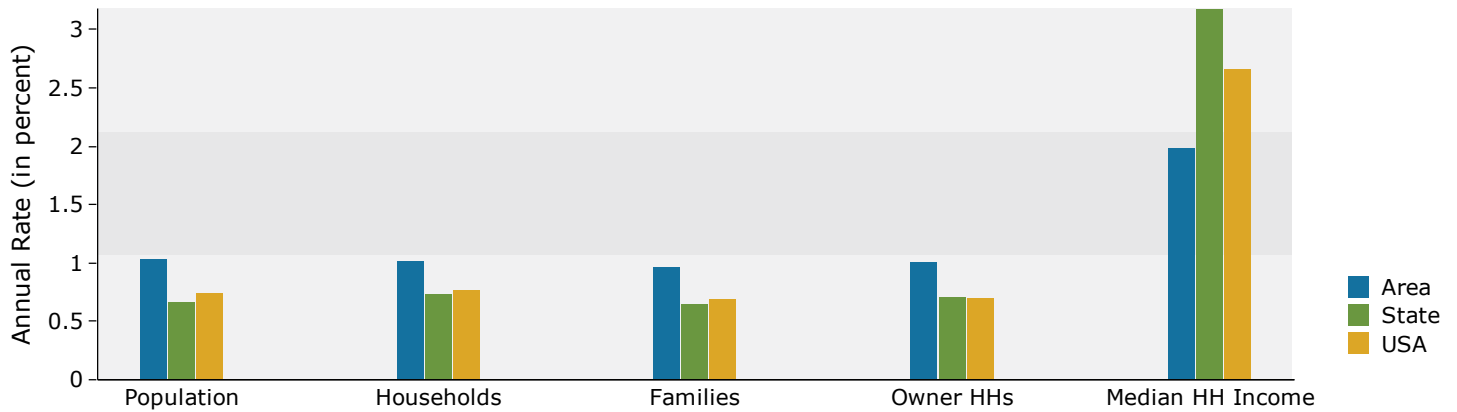
Demographic and Income Profile

6001 96th Ln N, Brooklyn Park, Minnesota, 55445
Ring: 3 mile radius

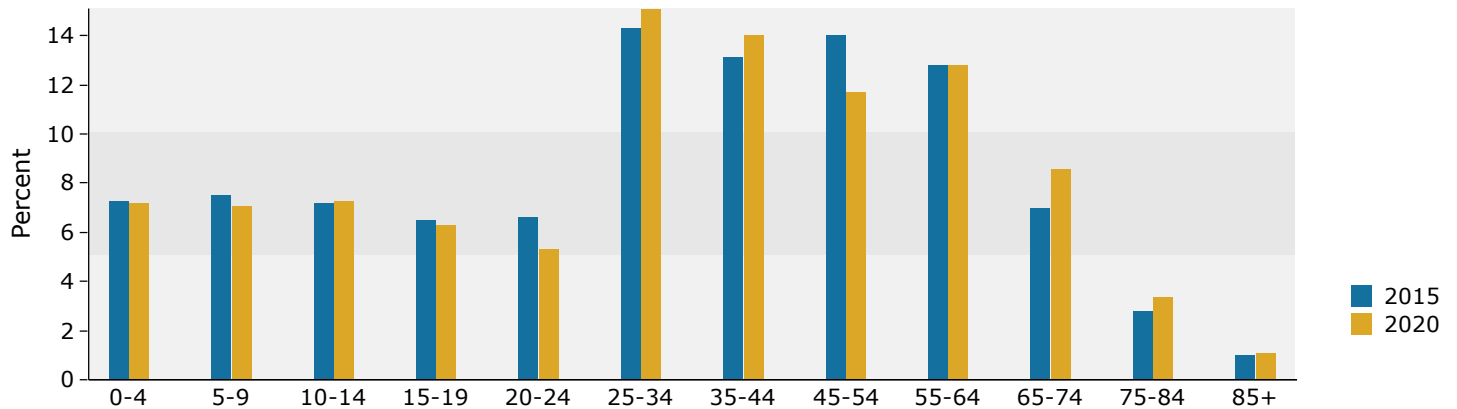
Prepared by Sam Svendahl

Latitude: 45.13086
Longitude: -93.35876

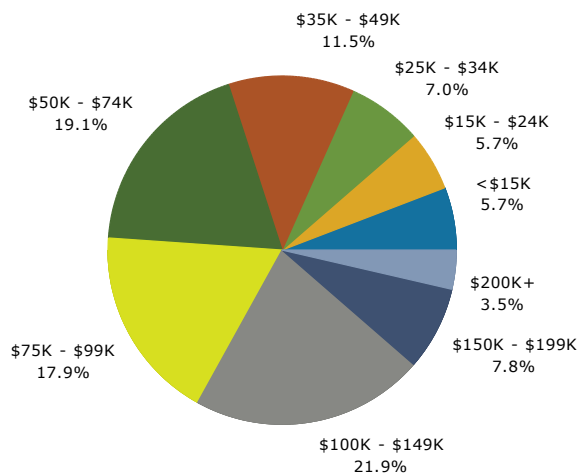
Trends 2015-2020



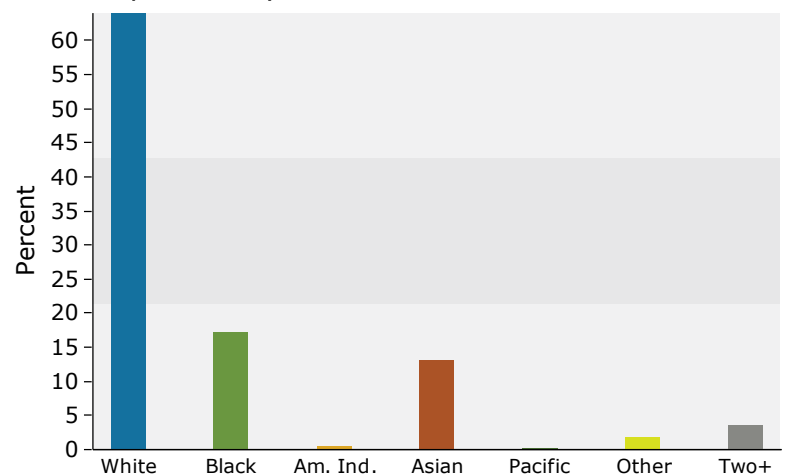
Population by Age



2015 Household Income



2015 Population by Race



2015 Percent Hispanic Origin: 3.9%

Source: U.S. Census Bureau, Census 2010 Summary File 1. Esri forecasts for 2015 and 2020.

February 29, 2016



Demographic and Income Profile

6001 96th Ln N, Brooklyn Park, Minnesota, 55445
Ring: 5 mile radius

Prepared by Sam Svendahl

Latitude: 45.13086
Longitude: -93.35876

Summary	Census 2010		2015		2020	
Population	201,885		208,346		217,278	
Households	74,637		77,275		80,605	
Families	51,737		53,250		55,376	
Average Household Size	2.69		2.68		2.68	
Owner Occupied Housing Units	54,991		56,637		59,085	
Renter Occupied Housing Units	19,646		20,638		21,520	
Median Age	35.0		35.7		36.5	
Trends: 2015 - 2020 Annual Rate	Area		State		National	
Population	0.84%		0.67%		0.75%	
Households	0.85%		0.73%		0.77%	
Families	0.79%		0.65%		0.69%	
Owner HHs	0.85%		0.71%		0.70%	
Median Household Income	3.24%		3.18%		2.66%	
Households by Income	2015		2020			
	Number	Percent	Number	Percent		
<\$15,000	5,602	7.2%	5,350	6.6%		
\$15,000 - \$24,999	5,282	6.8%	4,030	5.0%		
\$25,000 - \$34,999	6,753	8.7%	5,620	7.0%		
\$35,000 - \$49,999	10,171	13.2%	9,183	11.4%		
\$50,000 - \$74,999	15,673	20.3%	14,973	18.6%		
\$75,000 - \$99,999	13,315	17.2%	15,748	19.5%		
\$100,000 - \$149,999	13,863	17.9%	17,039	21.1%		
\$150,000 - \$199,999	4,360	5.6%	5,897	7.3%		
\$200,000+	2,256	2.9%	2,764	3.4%		
Median Household Income	\$65,037		\$76,276			
Average Household Income	\$77,816		\$87,767			
Per Capita Income	\$28,913		\$32,609			
Population by Age	Census 2010		2015		2020	
	Number	Percent	Number	Percent	Number	Percent
0 - 4	15,299	7.6%	14,932	7.2%	15,406	7.1%
5 - 9	14,426	7.1%	14,991	7.2%	14,754	6.8%
10 - 14	14,043	7.0%	14,139	6.8%	15,122	7.0%
15 - 19	14,357	7.1%	12,767	6.1%	13,224	6.1%
20 - 24	13,112	6.5%	13,872	6.7%	11,944	5.5%
25 - 34	29,588	14.7%	31,403	15.1%	33,089	15.2%
35 - 44	27,075	13.4%	27,062	13.0%	30,578	14.1%
45 - 54	31,295	15.5%	28,091	13.5%	25,149	11.6%
55 - 64	22,499	11.1%	26,184	12.6%	27,537	12.7%
65 - 74	11,200	5.5%	15,064	7.2%	18,689	8.6%
75 - 84	6,484	3.2%	6,935	3.3%	8,466	3.9%
85+	2,507	1.2%	2,907	1.4%	3,318	1.5%
Race and Ethnicity	Census 2010		2015		2020	
	Number	Percent	Number	Percent	Number	Percent
White Alone	141,165	69.9%	139,801	67.1%	138,941	63.9%
Black Alone	29,476	14.6%	33,121	15.9%	37,680	17.3%
American Indian Alone	1,188	0.6%	1,233	0.6%	1,289	0.6%
Asian Alone	18,282	9.1%	21,043	10.1%	24,373	11.2%
Pacific Islander Alone	86	0.0%	101	0.0%	115	0.1%
Some Other Race Alone	5,041	2.5%	5,459	2.6%	6,197	2.9%
Two or More Races	6,647	3.3%	7,588	3.6%	8,684	4.0%
Hispanic Origin (Any Race)	10,092	5.0%	10,992	5.3%	12,511	5.8%

Data Note: Income is expressed in current dollars.

Source: U.S. Census Bureau, Census 2010 Summary File 1. Esri forecasts for 2015 and 2020.

February 29, 2016



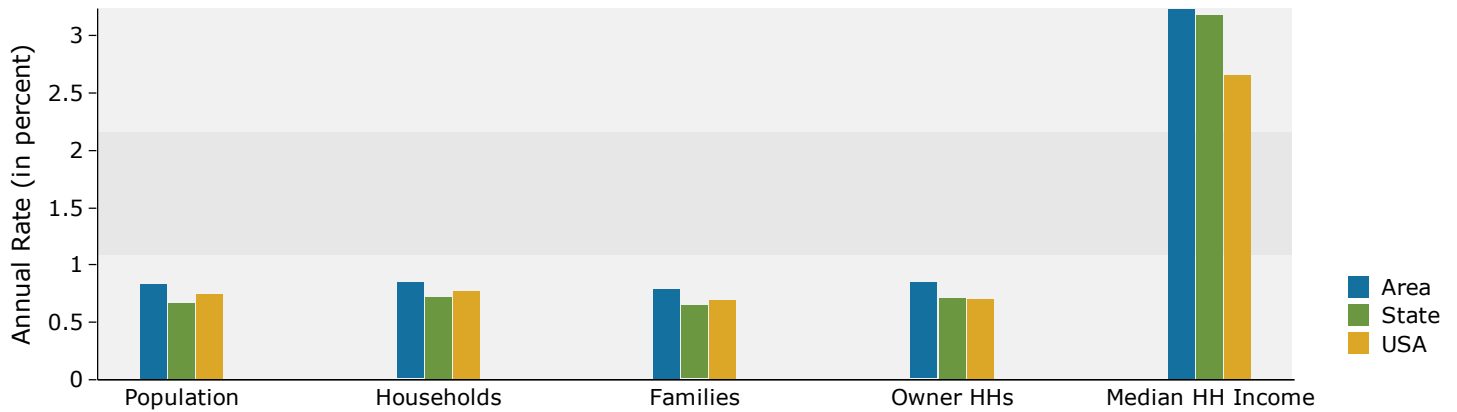
Demographic and Income Profile

6001 96th Ln N, Brooklyn Park, Minnesota, 55445
Ring: 5 mile radius

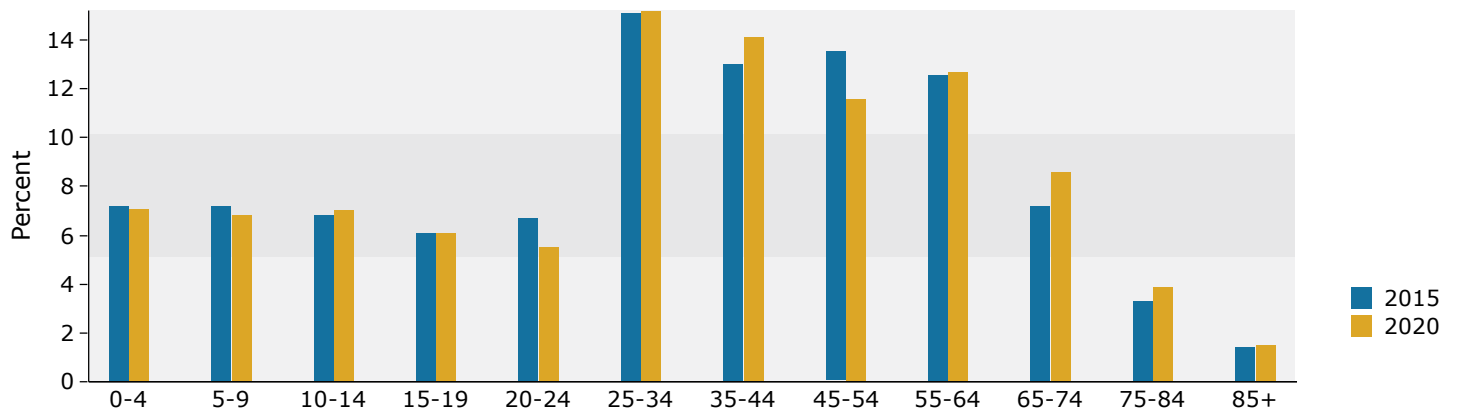
Prepared by Sam Svendahl

Latitude: 45.13086
Longitude: -93.35876

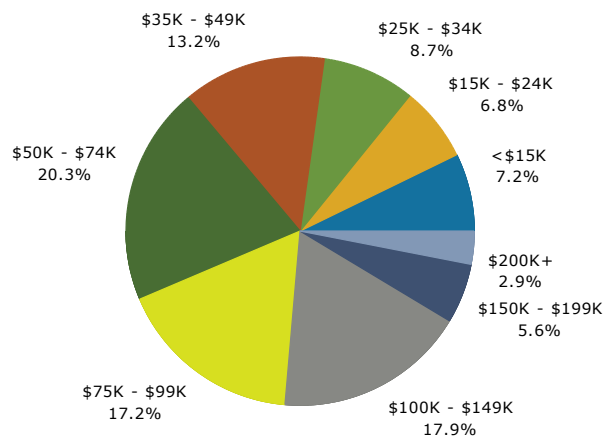
Trends 2015-2020



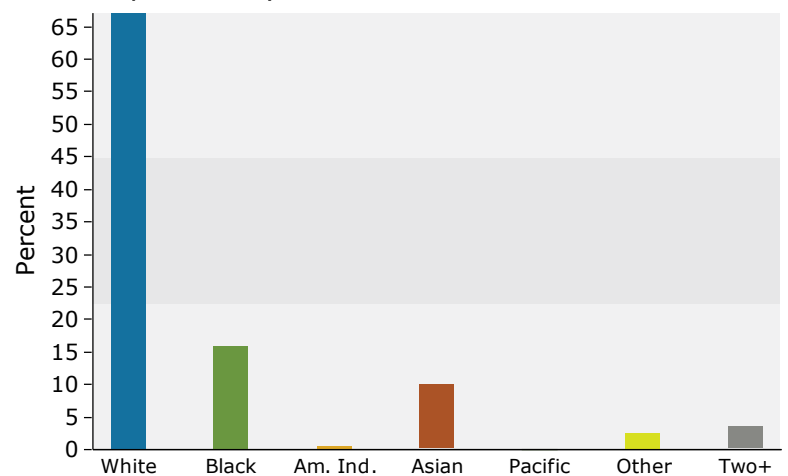
Population by Age



2015 Household Income



2015 Population by Race



2015 Percent Hispanic Origin: 5.3%

Source: U.S. Census Bureau, Census 2010 Summary File 1. Esri forecasts for 2015 and 2020.

February 29, 2016

Market Profile

6001 96th Ln N, Brooklyn Park, Minnesota, 55445
Rings: 1, 3, 5 mile radii

Prepared by Sam Svendahl

Latitude: 45.13086

Longitude: -93.35876

	1 mile	3 miles	5 miles
Population Summary			
2000 Total Population	3,107	70,677	194,189
2010 Total Population	5,514	77,327	201,885
2015 Total Population	6,047	80,696	208,346
2015 Group Quarters	4	382	1,204
2020 Total Population	6,625	84,922	217,278
2015-2020 Annual Rate	1.84%	1.03%	0.84%
Household Summary			
2000 Households	984	24,824	71,632
2000 Average Household Size	3.15	2.83	2.69
2010 Households	1,805	27,092	74,637
2010 Average Household Size	3.05	2.84	2.69
2015 Households	1,986	28,314	77,275
2015 Average Household Size	3.04	2.84	2.68
2020 Households	2,179	29,788	80,605
2020 Average Household Size	3.04	2.84	2.68
2015-2020 Annual Rate	1.87%	1.02%	0.85%
2010 Families	1,458	20,043	51,737
2010 Average Family Size	3.39	3.30	3.21
2015 Families	1,594	20,841	53,250
2015 Average Family Size	3.39	3.30	3.21
2020 Families	1,744	21,861	55,376
2020 Average Family Size	3.39	3.31	3.22
2015-2020 Annual Rate	1.81%	0.96%	0.79%
Housing Unit Summary			
2000 Housing Units	997	25,141	72,544
Owner Occupied Housing Units	96.5%	81.3%	75.1%
Renter Occupied Housing Units	2.3%	17.4%	23.7%
Vacant Housing Units	1.2%	1.3%	1.3%
2010 Housing Units	1,882	28,416	78,390
Owner Occupied Housing Units	87.3%	77.0%	70.2%
Renter Occupied Housing Units	8.6%	18.4%	25.1%
Vacant Housing Units	4.1%	4.7%	4.8%
2015 Housing Units	2,020	29,581	81,189
Owner Occupied Housing Units	89.4%	77.1%	69.8%
Renter Occupied Housing Units	9.0%	18.6%	25.4%
Vacant Housing Units	1.7%	4.3%	4.8%
2020 Housing Units	2,219	31,143	84,850
Owner Occupied Housing Units	89.2%	77.1%	69.6%
Renter Occupied Housing Units	9.0%	18.6%	25.4%
Vacant Housing Units	1.8%	4.4%	5.0%
Median Household Income			
2015	\$91,953	\$76,040	\$65,037
2020	\$100,436	\$83,895	\$76,276
Median Home Value			
2015	\$280,904	\$223,512	\$202,105
2020	\$335,043	\$248,915	\$230,374
Per Capita Income			
2015	\$31,857	\$30,134	\$28,913
2020	\$35,982	\$34,031	\$32,609
Median Age			
2010	32.9	34.9	35.0
2015	33.2	35.5	35.7
2020	33.6	36.1	36.5

Data Note: Household population includes persons not residing in group quarters. Average Household Size is the household population divided by total households.

Persons in families include the householder and persons related to the householder by birth, marriage, or adoption. Per Capita Income represents the income received by all persons aged 15 years and over divided by the total population.

Source: U.S. Census Bureau, Census 2010 Summary File 1. Esri forecasts for 2015 and 2020. Esri converted Census 2000 data into 2010 geography.

February 29, 2016



Market Profile

6001 96th Ln N, Brooklyn Park, Minnesota, 55445
Rings: 1, 3, 5 mile radii

Prepared by Sam Svendahl

Latitude: 45.13086

Longitude: -93.35876

	1 mile	3 miles	5 miles
2015 Households by Income			
Household Income Base	1,986	28,314	77,275
<\$15,000	2.3%	5.7%	7.2%
\$15,000 - \$24,999	3.3%	5.7%	6.8%
\$25,000 - \$34,999	5.3%	7.0%	8.7%
\$35,000 - \$49,999	8.2%	11.5%	13.2%
\$50,000 - \$74,999	17.0%	19.1%	20.3%
\$75,000 - \$99,999	18.7%	17.9%	17.2%
\$100,000 - \$149,999	31.0%	21.9%	17.9%
\$150,000 - \$199,999	9.3%	7.8%	5.6%
\$200,000+	4.9%	3.5%	2.9%
Average Household Income	\$101,410	\$86,050	\$77,816
2020 Households by Income			
Household Income Base	2,179	29,788	80,605
<\$15,000	2.0%	5.1%	6.6%
\$15,000 - \$24,999	2.1%	4.1%	5.0%
\$25,000 - \$34,999	3.9%	5.4%	7.0%
\$35,000 - \$49,999	6.9%	9.8%	11.4%
\$50,000 - \$74,999	16.3%	17.0%	18.6%
\$75,000 - \$99,999	18.4%	19.7%	19.5%
\$100,000 - \$149,999	30.7%	24.3%	21.1%
\$150,000 - \$199,999	13.0%	10.4%	7.3%
\$200,000+	6.8%	4.3%	3.4%
Average Household Income	\$114,571	\$97,216	\$87,767
2015 Owner Occupied Housing Units by Value			
Total	1,805	22,820	56,631
<\$50,000	0.3%	0.2%	0.7%
\$50,000 - \$99,999	0.6%	2.7%	3.0%
\$100,000 - \$149,999	3.5%	8.2%	11.5%
\$150,000 - \$199,999	8.9%	24.4%	33.8%
\$200,000 - \$249,999	22.6%	31.0%	25.7%
\$250,000 - \$299,999	23.0%	14.8%	11.5%
\$300,000 - \$399,999	20.8%	11.3%	8.2%
\$400,000 - \$499,999	13.4%	4.6%	3.3%
\$500,000 - \$749,999	6.3%	2.0%	1.6%
\$750,000 - \$999,999	0.6%	0.3%	0.2%
\$1,000,000 +	0.2%	0.5%	0.6%
Average Home Value	\$314,030	\$247,348	\$228,374
2020 Owner Occupied Housing Units by Value			
Total	1,979	23,996	59,079
<\$50,000	0.1%	0.1%	0.5%
\$50,000 - \$99,999	0.2%	1.8%	2.4%
\$100,000 - \$149,999	0.7%	3.2%	5.5%
\$150,000 - \$199,999	2.8%	15.7%	25.1%
\$200,000 - \$249,999	12.9%	29.8%	27.2%
\$250,000 - \$299,999	23.2%	18.4%	14.9%
\$300,000 - \$399,999	29.1%	17.3%	12.9%
\$400,000 - \$499,999	19.6%	7.9%	5.9%
\$500,000 - \$749,999	8.5%	4.1%	3.9%
\$750,000 - \$999,999	2.8%	1.1%	0.9%
\$1,000,000 +	0.2%	0.6%	0.7%
Average Home Value	\$368,949	\$288,625	\$268,423

Data Note: Income represents the preceding year, expressed in current dollars. Household income includes wage and salary earnings, interest dividends, net rents, pensions, SSI and welfare payments, child support, and alimony.

Source: U.S. Census Bureau, Census 2010 Summary File 1. Esri forecasts for 2015 and 2020. Esri converted Census 2000 data into 2010 geography.

February 29, 2016

Market Profile

6001 96th Ln N, Brooklyn Park, Minnesota, 55445
Rings: 1, 3, 5 mile radii

Prepared by Sam Svendahl

Latitude: 45.13086

Longitude: -93.35876

	1 mile	3 miles	5 miles
2010 Population by Age			
Total	5,516	77,329	201,884
0 - 4	10.0%	7.7%	7.6%
5 - 9	9.0%	7.6%	7.1%
10 - 14	8.0%	7.6%	7.0%
15 - 24	11.4%	13.5%	13.6%
25 - 34	15.2%	13.8%	14.7%
35 - 44	17.8%	13.9%	13.4%
45 - 54	14.4%	15.9%	15.5%
55 - 64	8.1%	11.4%	11.1%
65 - 74	3.1%	5.0%	5.5%
75 - 84	1.8%	2.6%	3.2%
85 +	1.2%	0.9%	1.2%
18 +	68.5%	72.3%	73.8%
2015 Population by Age			
Total	6,046	80,696	208,347
0 - 4	9.2%	7.3%	7.2%
5 - 9	9.9%	7.5%	7.2%
10 - 14	8.4%	7.2%	6.8%
15 - 24	11.2%	13.1%	12.8%
25 - 34	14.1%	14.3%	15.1%
35 - 44	17.0%	13.1%	13.0%
45 - 54	14.0%	14.0%	13.5%
55 - 64	9.6%	12.8%	12.6%
65 - 74	4.2%	7.0%	7.2%
75 - 84	1.6%	2.8%	3.3%
85 +	0.8%	1.0%	1.4%
18 +	68.5%	73.9%	75.1%
2020 Population by Age			
Total	6,624	84,920	217,276
0 - 4	9.1%	7.2%	7.1%
5 - 9	9.3%	7.1%	6.8%
10 - 14	9.2%	7.3%	7.0%
15 - 24	10.4%	11.6%	11.6%
25 - 34	14.4%	15.1%	15.2%
35 - 44	17.1%	14.0%	14.1%
45 - 54	13.0%	11.7%	11.6%
55 - 64	9.8%	12.8%	12.7%
65 - 74	5.3%	8.6%	8.6%
75 - 84	1.7%	3.4%	3.9%
85 +	0.7%	1.1%	1.5%
18 +	68.2%	74.3%	75.4%
2010 Population by Sex			
Males	2,746	38,016	98,588
Females	2,768	39,311	103,297
2015 Population by Sex			
Males	3,017	39,643	101,698
Females	3,030	41,053	106,648
2020 Population by Sex			
Males	3,307	41,734	106,164
Females	3,318	43,188	111,113

Source: U.S. Census Bureau, Census 2010 Summary File 1. Esri forecasts for 2015 and 2020. Esri converted Census 2000 data into 2010 geography.

February 29, 2016



Market Profile

6001 96th Ln N, Brooklyn Park, Minnesota, 55445
Rings: 1, 3, 5 mile radii

Prepared by Sam Svendahl

Latitude: 45.13086

Longitude: -93.35876

	1 mile	3 miles	5 miles
2010 Population by Race/Ethnicity			
Total	5,514	77,328	201,885
White Alone	62.4%	66.7%	69.9%
Black Alone	15.1%	16.1%	14.6%
American Indian Alone	0.3%	0.5%	0.6%
Asian Alone	18.4%	11.7%	9.1%
Pacific Islander Alone	0.0%	0.1%	0.0%
Some Other Race Alone	1.1%	1.7%	2.5%
Two or More Races	2.7%	3.2%	3.3%
Hispanic Origin	2.1%	3.7%	5.0%
Diversity Index	57.2	55.0	53.1
2015 Population by Race/Ethnicity			
Total	6,046	80,697	208,346
White Alone	59.2%	64.0%	67.1%
Black Alone	16.2%	17.2%	15.9%
American Indian Alone	0.2%	0.5%	0.6%
Asian Alone	20.3%	13.1%	10.1%
Pacific Islander Alone	0.0%	0.1%	0.0%
Some Other Race Alone	1.1%	1.8%	2.6%
Two or More Races	2.9%	3.5%	3.6%
Hispanic Origin	2.2%	3.9%	5.3%
Diversity Index	60.1	57.8	56.3
2020 Population by Race/Ethnicity			
Total	6,626	84,922	217,279
White Alone	55.6%	60.9%	63.9%
Black Alone	17.6%	18.5%	17.3%
American Indian Alone	0.3%	0.5%	0.6%
Asian Alone	22.2%	14.4%	11.2%
Pacific Islander Alone	0.1%	0.1%	0.1%
Some Other Race Alone	1.2%	1.9%	2.9%
Two or More Races	3.1%	3.8%	4.0%
Hispanic Origin	2.4%	4.2%	5.8%
Diversity Index	62.9	60.8	59.7
2010 Population by Relationship and Household Type			
Total	5,514	77,327	201,885
In Households	99.9%	99.5%	99.4%
In Family Households	91.8%	87.9%	85.0%
Householder	25.4%	25.8%	25.6%
Spouse	21.5%	19.8%	18.6%
Child	37.8%	34.8%	33.3%
Other relative	5.2%	5.1%	4.8%
Nonrelative	2.0%	2.4%	2.6%
In Nonfamily Households	8.2%	11.6%	14.4%
In Group Quarters	0.1%	0.5%	0.6%
Institutionalized Population	0.0%	0.3%	0.4%
Noninstitutionalized Population	0.1%	0.2%	0.2%

Data Note: Persons of Hispanic Origin may be of any race. The Diversity Index measures the probability that two people from the same area will be from different race/ethnic groups.

Source: U.S. Census Bureau, Census 2010 Summary File 1. Esri forecasts for 2015 and 2020. Esri converted Census 2000 data into 2010 geography.

February 29, 2016

Market Profile

6001 96th Ln N, Brooklyn Park, Minnesota, 55445
Rings: 1, 3, 5 mile radii

Prepared by Sam Svendahl

Latitude: 45.13086

Longitude: -93.35876

	1 mile	3 miles	5 miles
2015 Population 25+ by Educational Attainment			
Total	3,706	52,387	137,647
Less than 9th Grade	4.5%	3.1%	3.3%
9th - 12th Grade, No Diploma	3.0%	4.2%	4.8%
High School Graduate	15.9%	20.4%	22.2%
GED/Alternative Credential	2.4%	2.6%	3.4%
Some College, No Degree	19.8%	23.6%	24.4%
Associate Degree	10.8%	12.2%	11.8%
Bachelor's Degree	31.3%	24.5%	21.7%
Graduate/Professional Degree	12.3%	9.4%	8.4%
2015 Population 15+ by Marital Status			
Total	4,385	62,925	164,284
Never Married	28.7%	31.6%	33.2%
Married	61.4%	54.8%	50.7%
Widowed	2.4%	3.8%	4.6%
Divorced	7.5%	9.7%	11.5%
2015 Civilian Population 16+ in Labor Force			
Civilian Employed	96.0%	95.8%	95.3%
Civilian Unemployed	4.0%	4.2%	4.7%
2015 Employed Population 16+ by Industry			
Total	3,204	43,988	111,943
Agriculture/Mining	0.2%	0.3%	0.4%
Construction	1.3%	3.4%	4.4%
Manufacturing	22.6%	18.5%	17.6%
Wholesale Trade	1.8%	2.5%	2.8%
Retail Trade	10.2%	12.1%	12.2%
Transportation/Utilities	4.6%	4.5%	4.9%
Information	1.7%	1.3%	1.5%
Finance/Insurance/Real Estate	12.2%	8.3%	8.3%
Services	43.1%	45.8%	45.1%
Public Administration	2.0%	3.2%	2.9%
2015 Employed Population 16+ by Occupation			
Total	3,204	43,987	111,944
White Collar	70.0%	64.2%	62.3%
Management/Business/Financial	21.6%	16.5%	15.0%
Professional	21.0%	20.7%	20.3%
Sales	12.4%	10.5%	10.6%
Administrative Support	15.0%	16.5%	16.5%
Services	11.0%	14.9%	15.9%
Blue Collar	19.0%	20.9%	21.9%
Farming/Forestry/Fishing	0.0%	0.1%	0.1%
Construction/Extraction	1.0%	2.6%	3.3%
Installation/Maintenance/Repair	2.2%	2.7%	3.2%
Production	13.1%	10.6%	9.7%
Transportation/Material Moving	2.7%	4.9%	5.5%

Source: U.S. Census Bureau, Census 2010 Summary File 1. Esri forecasts for 2015 and 2020. Esri converted Census 2000 data into 2010 geography.

February 29, 2016



Market Profile

6001 96th Ln N, Brooklyn Park, Minnesota, 55445
Rings: 1, 3, 5 mile radii

Prepared by Sam Svendahl

Latitude: 45.13086

Longitude: -93.35876

	1 mile	3 miles	5 miles
2010 Households by Type			
Total	1,805	27,092	74,637
Households with 1 Person	14.1%	20.5%	24.2%
Households with 2+ People	85.9%	79.5%	75.8%
Family Households	80.8%	74.0%	69.3%
Husband-wife Families	68.6%	56.7%	50.5%
With Related Children	41.8%	27.9%	23.5%
Other Family (No Spouse Present)	12.1%	17.3%	18.9%
Other Family with Male Householder	4.7%	5.0%	5.3%
With Related Children	3.0%	2.9%	3.2%
Other Family with Female Householder	7.4%	12.2%	13.5%
With Related Children	4.8%	8.5%	9.3%
Nonfamily Households	5.2%	5.5%	6.5%
All Households with Children	50.0%	39.8%	36.4%
Multigenerational Households	4.8%	4.4%	3.9%
Unmarried Partner Households	5.5%	6.5%	7.4%
Male-female	5.0%	5.9%	6.8%
Same-sex	0.6%	0.6%	0.6%
2010 Households by Size			
Total	1,806	27,092	74,637
1 Person Household	14.1%	20.5%	24.2%
2 Person Household	27.5%	31.3%	32.2%
3 Person Household	17.5%	17.4%	16.9%
4 Person Household	22.9%	16.6%	14.6%
5 Person Household	10.2%	7.7%	6.7%
6 Person Household	4.3%	3.3%	2.9%
7 + Person Household	3.6%	3.1%	2.5%
2010 Households by Tenure and Mortgage Status			
Total	1,805	27,092	74,637
Owner Occupied	91.0%	80.7%	73.7%
Owned with a Mortgage/Loan	84.4%	68.3%	60.4%
Owned Free and Clear	6.6%	12.5%	13.2%
Renter Occupied	9.0%	19.3%	26.3%

Data Note: Households with children include any households with people under age 18, related or not. Multigenerational households are families with 3 or more parent-child relationships. Unmarried partner households are usually classified as nonfamily households unless there is another member of the household related to the householder. Multigenerational and unmarried partner households are reported only to the tract level. Esri estimated block group data, which is used to estimate polygons or non-standard geography.

Source: U.S. Census Bureau, Census 2010 Summary File 1. Esri forecasts for 2015 and 2020. Esri converted Census 2000 data into 2010 geography.

February 29, 2016



Market Profile

6001 96th Ln N, Brooklyn Park, Minnesota, 55445
Rings: 1, 3, 5 mile radii

Prepared by Sam Svendahl

Latitude: 45.13086

Longitude: -93.35876

	1 mile	3 miles	5 miles
Top 3 Tapestry Segments			
1.	Boomburbs (1C)	Home Improvement (4B)	Home Improvement (4B)
2.	Soccer Moms (4A)	Boomburbs (1C)	Parks and Rec (5C)
3.	Enterprising Professionals	Soccer Moms (4A)	Soccer Moms (4A)
2015 Consumer Spending			
Apparel & Services: Total \$	\$6,303,204	\$75,902,204	\$187,473,151
Average Spent	\$3,173.82	\$2,680.73	\$2,426.05
Spending Potential Index	137	116	105
Computers & Accessories: Total \$	\$724,680	\$8,699,333	\$21,405,336
Average Spent	\$364.89	\$307.24	\$277.00
Spending Potential Index	140	118	106
Education: Total \$	\$4,212,941	\$50,366,625	\$125,723,387
Average Spent	\$2,121.32	\$1,778.86	\$1,626.96
Spending Potential Index	139	117	107
Entertainment/Recreation: Total \$	\$8,974,399	\$107,365,325	\$264,107,515
Average Spent	\$4,518.83	\$3,791.95	\$3,417.76
Spending Potential Index	136	115	103
Food at Home: Total \$	\$13,318,846	\$165,398,849	\$412,483,932
Average Spent	\$6,706.37	\$5,841.59	\$5,337.87
Spending Potential Index	128	112	102
Food Away from Home: Total \$	\$8,989,220	\$108,072,444	\$266,438,728
Average Spent	\$4,526.29	\$3,816.93	\$3,447.93
Spending Potential Index	138	116	105
Health Care: Total \$	\$11,923,217	\$148,894,556	\$369,281,615
Average Spent	\$6,003.63	\$5,258.69	\$4,778.80
Spending Potential Index	127	111	101
HH Furnishings & Equipment: Total \$	\$5,105,564	\$60,682,860	\$148,480,412
Average Spent	\$2,570.78	\$2,143.21	\$1,921.45
Spending Potential Index	140	116	104
Investments: Total \$	\$7,565,044	\$84,917,015	\$200,950,529
Average Spent	\$3,809.19	\$2,999.12	\$2,600.46
Spending Potential Index	138	109	94
Retail Goods: Total \$	\$67,095,096	\$816,292,313	\$2,013,892,933
Average Spent	\$33,784.04	\$28,829.99	\$26,061.38
Spending Potential Index	132	113	102
Shelter: Total \$	\$44,238,272	\$544,656,878	\$1,355,477,891
Average Spent	\$22,275.06	\$19,236.31	\$17,540.96
Spending Potential Index	135	117	107
TV/Video/Audio: Total \$	\$3,294,002	\$41,460,568	\$103,594,407
Average Spent	\$1,658.61	\$1,464.31	\$1,340.59
Spending Potential Index	127	112	102
Travel: Total \$	\$5,650,006	\$65,849,862	\$160,112,142
Average Spent	\$2,844.92	\$2,325.70	\$2,071.98
Spending Potential Index	146	119	106
Vehicle Maintenance & Repairs: Total \$	\$2,998,600	\$36,527,187	\$90,023,689
Average Spent	\$1,509.87	\$1,290.08	\$1,164.98
Spending Potential Index	135	116	104

Data Note: Consumer spending shows the amount spent on a variety of goods and services by households that reside in the area. Expenditures are shown by broad budget categories that are not mutually exclusive. Consumer spending does not equal business revenue. Total and Average Amount Spent Per Household represent annual figures. The Spending Potential Index represents the amount spent in the area relative to a national average of 100.

Source: Consumer Spending data are derived from the 2011 and 2012 Consumer Expenditure Surveys, Bureau of Labor Statistics. Esri.

Source: U.S. Census Bureau, Census 2010 Summary File 1. Esri forecasts for 2015 and 2020. Esri converted Census 2000 data into 2010 geography.

February 29, 2016