

Colliers

# Shoppes of Snowden Grove

Available



Rare 2,400± SF  
Availability



For Lease

VIEW ONLINE 

[colliers.com/memphis](https://colliers.com/memphis)

ED THOMAS, CCIM  
901 312 4912  
[ed.thomas@colliers.com](mailto:ed.thomas@colliers.com)

BAYARD SNOWDEN, SIOR  
Owner/Agent  
901 312 4906  
[bayard.snowden@colliers.com](mailto:bayard.snowden@colliers.com)

COLLIERS  
6363 Poplar Avenue, Suite 220  
Memphis, TN 38119  
901 375 4800

## Prime Goodman Road Frontage with Kroger Anchor

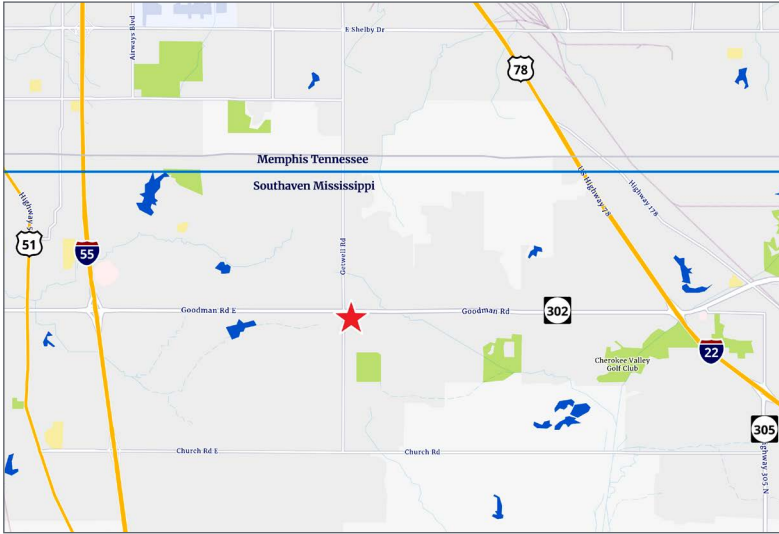
**Goodman Rd., Southaven, MS 38672**

Shoppes of Snowden Grove is an attractive 22,800 square foot multi-tenant shopping center originally built in 2004 and anchored by a Kroger Supermarket. Tenants include: C-Spire, The Joint Chiropractic, Liquor & Wine 4 Less, Newk's Express Cafe, Pugh's Florist, Southern Chic Salon, Beau'tique and Marcos Pizza. Available space has frontage on Goodman Road.

This document has been prepared by Colliers International for advertising and general information only. Colliers International makes no guarantees, representations or warranties of any kind, expressed or implied, regarding the information including, but not limited to, warranties of content, accuracy and reliability. Any interested party should undertake their own inquiries as to the accuracy of the information. Colliers International excludes unequivocally all inferred or implied terms, conditions and warranties arising out of this document and excludes all liability for loss and damages arising there from. This publication is the copyrighted property of Colliers International and/or its licensor(s). ©2025. All rights reserved.

Accelerating success.

# For Lease



## Shoppes of Snowden Grove

This shopping center is less than one quarter mile from Silo Square, a new traditional neighborhood development that, when finished, will consist of hundreds of homes, a town square, dining, plazas, courtyards, shops, rooftop patios, banks, offices, a hotel, a farmer's market, common areas and more!

It is also positioned one half mile from Snowden Grove Park, a multi-purpose sports complex with 17 state-of-the-art baseball fields that has features comparing to professional grade fields. The park hosts several tournaments including the Dizzy Dean World Series. It is also home to the BankPlus Sports Center (training facility) as well as batting cages, soccer fields, Strike Zone Bowling Lanes and the BankPlus Amphitheater, that when finished with it's 9.8 million renovation, will seat over 9,000 guests at it's events.

**Goodman Rd. Traffic Count:**  
**37,000 VPD**



### 2025 Demographic & Income Profile

	1 Mile	3 Miles	5 Miles
Population	2,008	31,708	80,326
Households	763	12,379	31,439
Average HH Income	\$132,413	\$113,818	\$99,842