

FOR SALE › COMMERCIAL LAND



1009 E 24 Highway

INDEPENDENCE, MISSOURI

REDUCED SALE PRICE!



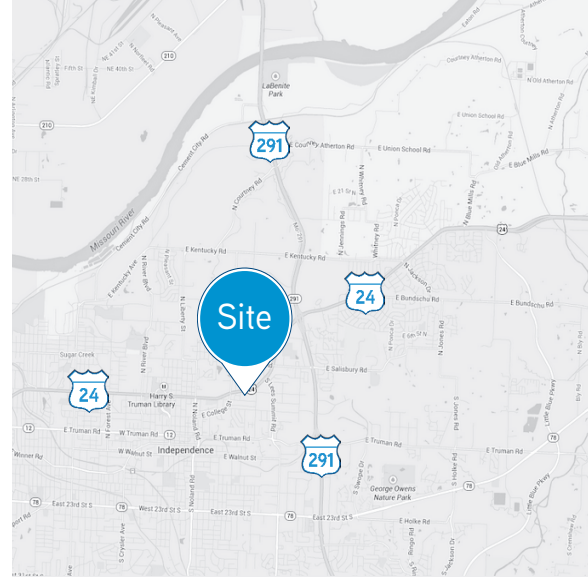
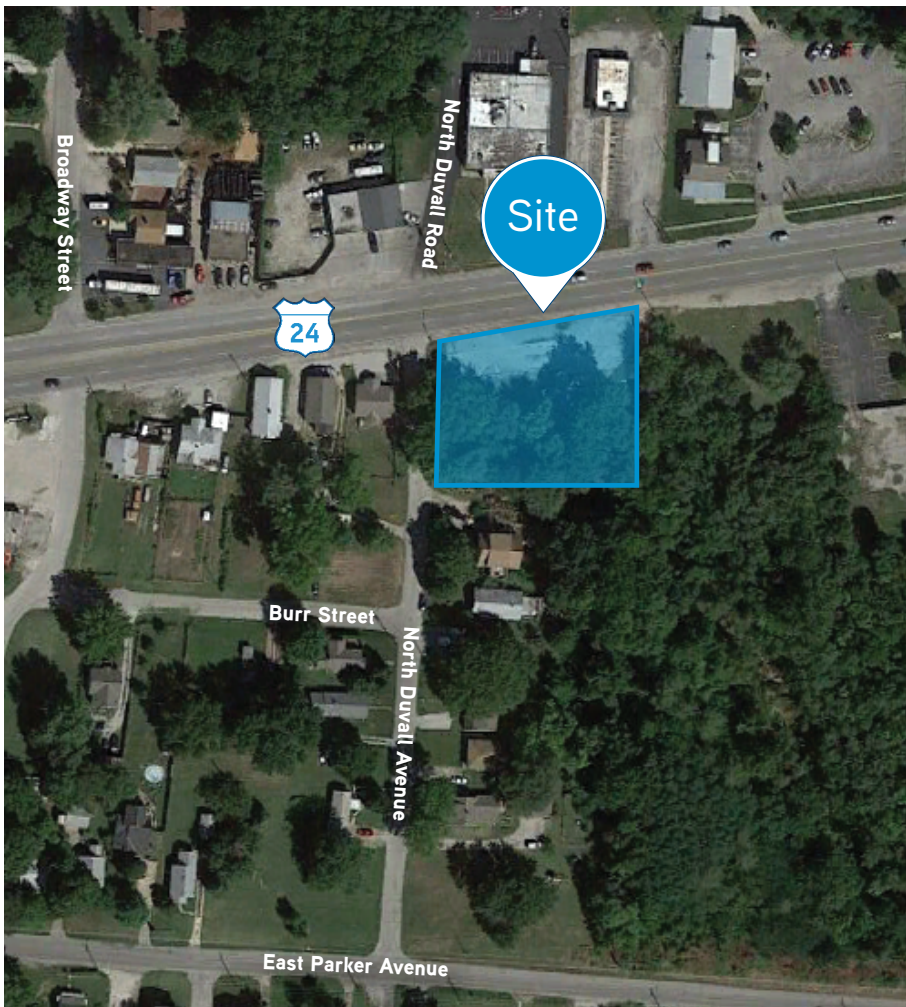
Property Features

- › .67± acres
- › Zoned C-2 general commercial
- › Parcel #15-730-11-07-00-0-00-000
- › **Reduced Sale Price! \$75,000**

AGENT: DOUG HEDRICK SIOR, CCIM
+1 816 556 1136
KANSAS CITY, MO
doug.hedrick@colliers.com

COLLIERS INTERNATIONAL
4520 Main Street, Suite 1000
Kansas City, MO 64111
www.colliers.com

1009 E 24 Highway > Aerial



Contact Us

AGENT: DOUG HEDRICK SIOR, CCIM
+1 816 556 1136
KANSAS CITY, MO
doug.hedrick@colliers.com

Please contact us to view this property

COLLIERS INTERNATIONAL
4520 Main Street, Suite 1000
Kansas City, MO 64111
www.colliers.com

This document has been prepared by Colliers International for advertising and general information only. Colliers International makes no guarantees, representations or warranties of any kind, expressed or implied, regarding the information including, but not limited to, warranties of content, accuracy and reliability. Any interested party should undertake their own inquiries as to the accuracy of the information. Colliers International excludes unequivocally all inferred or implied terms, conditions and warranties arising out of this document and excludes all liability for loss and damages arising there from. This publication is the copyrighted property of Colliers International and/or its licensor(s). © 2010. All rights reserved.

