

FOR LEASE > WAREHOUSE/DISTRIBUTION SPACE



# San Leandro Business Park

1525 ALVARADO STREET | SAN LEANDRO, CA 94577



## Property Description

Approximately 62,801 square foot portion of a larger warehouse / distribution facility, with the ability to expand within the ±275,975 square foot San Leandro Business Park.

## Property Features

- > Approximately 3,000 SF of office including warehouse break room
- > One (1) grade-level door
- > Twelve (12) dock-high positions
- > ±28'-30' interior ceiling clearance
- > 900 Amps @ 277/480 Volts (subject to confirmation)
- > Fully sprinklered
- > Well-landscaped business park setting
- > Immediate access to I-880 via Davis St. or Marina Blvd.
- > Close proximity to the Port of Oakland and Oakland Int'l Airport

**Lease Rate:** \$0.78 psf/month, NNN

## Contact Us

**GREIG LAGOMARSINO, SIOR**  
+1 510 433 5809  
[greig.lago@colliers.com](mailto:greig.lago@colliers.com)  
CA License No. 01063817

**MARK MAGUIRE**  
+1 510 433 5835  
[mark.maguire@colliers.com](mailto:mark.maguire@colliers.com)  
CA License No. 01190597

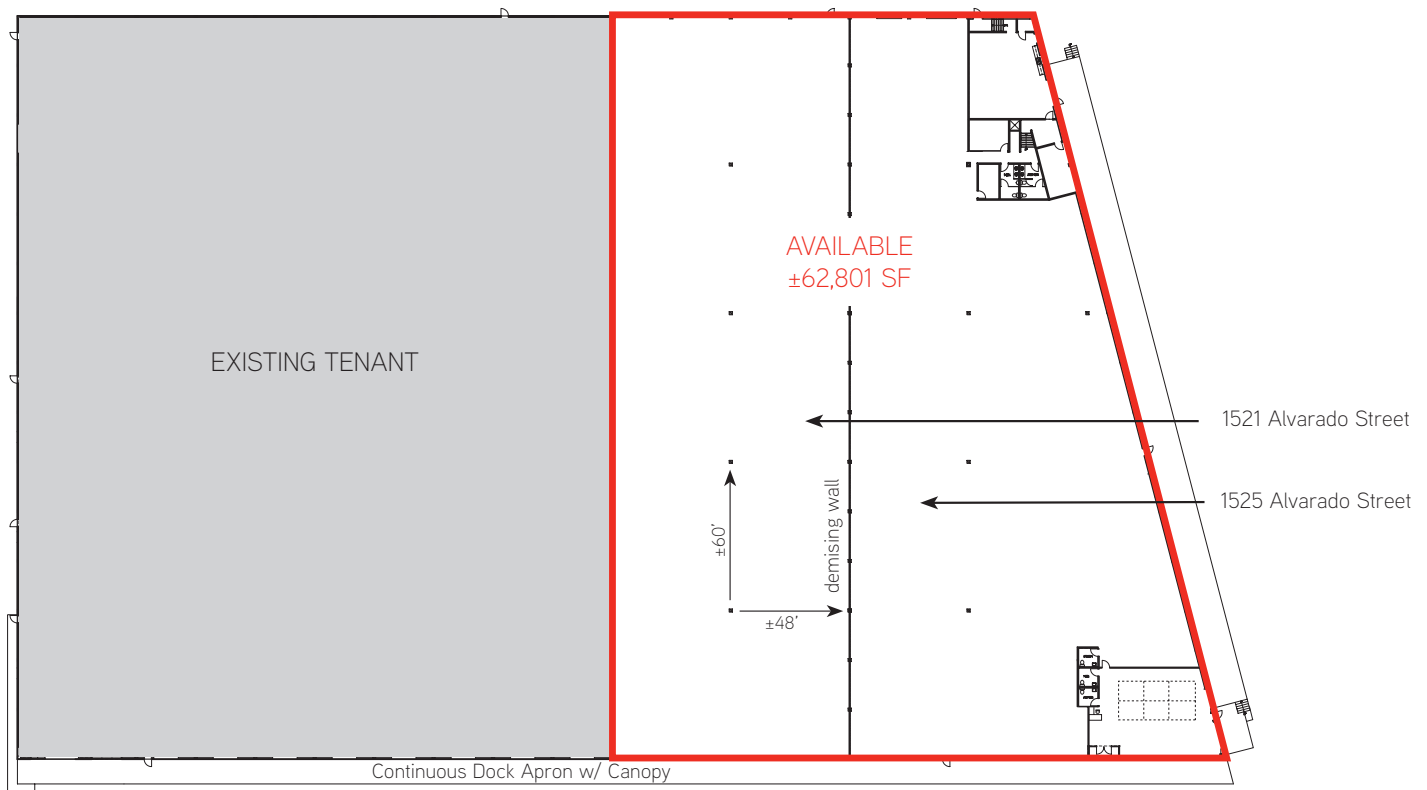
**NICK OUSMAN**  
+1 510 433 5820  
[nick.ousman@colliers.com](mailto:nick.ousman@colliers.com)  
CA License No. 01908981



FOR LEASE > WAREHOUSE/DISTRIBUTION SPACE

# San Leandro Business Park

1525 ALVARADO STREET | SAN LEANDRO, CA 94577



The information furnished has been obtained from sources we deem reliable and is submitted subject to errors, omissions and changes. Although Colliers International has no reason to doubt its accuracy, we do not guarantee it. All information should be verified by the recipient prior to lease, purchase, exchange, or execution of legal documents. © 2018 Colliers International

**GREIG LAGOMARSINO, SIOR**  
+1 510 433 5809  
greig.lago@colliers.com  
CA License No. 01063817

**MARK MAGUIRE**  
+1 510 433 5835  
mark.maguire@colliers.com  
CA License No. 01190597

**NICK OUSMAN**  
+1 510 433 5820  
nick.ousman@colliers.com  
CA License No. 01980322