

FOR LEASE > OFFICE SPACE



Corporate Oaks

12351 W 96TH TERRACE, LENEXA, KANSAS



MATT STOVER
+1 816 556 1116
KANSAS CITY, MO
matt.stover@colliers.com

COLLIERS INTERNATIONAL
4520 Main Street, Suite 1000
Kansas City, MO 64111
www.colliers.com

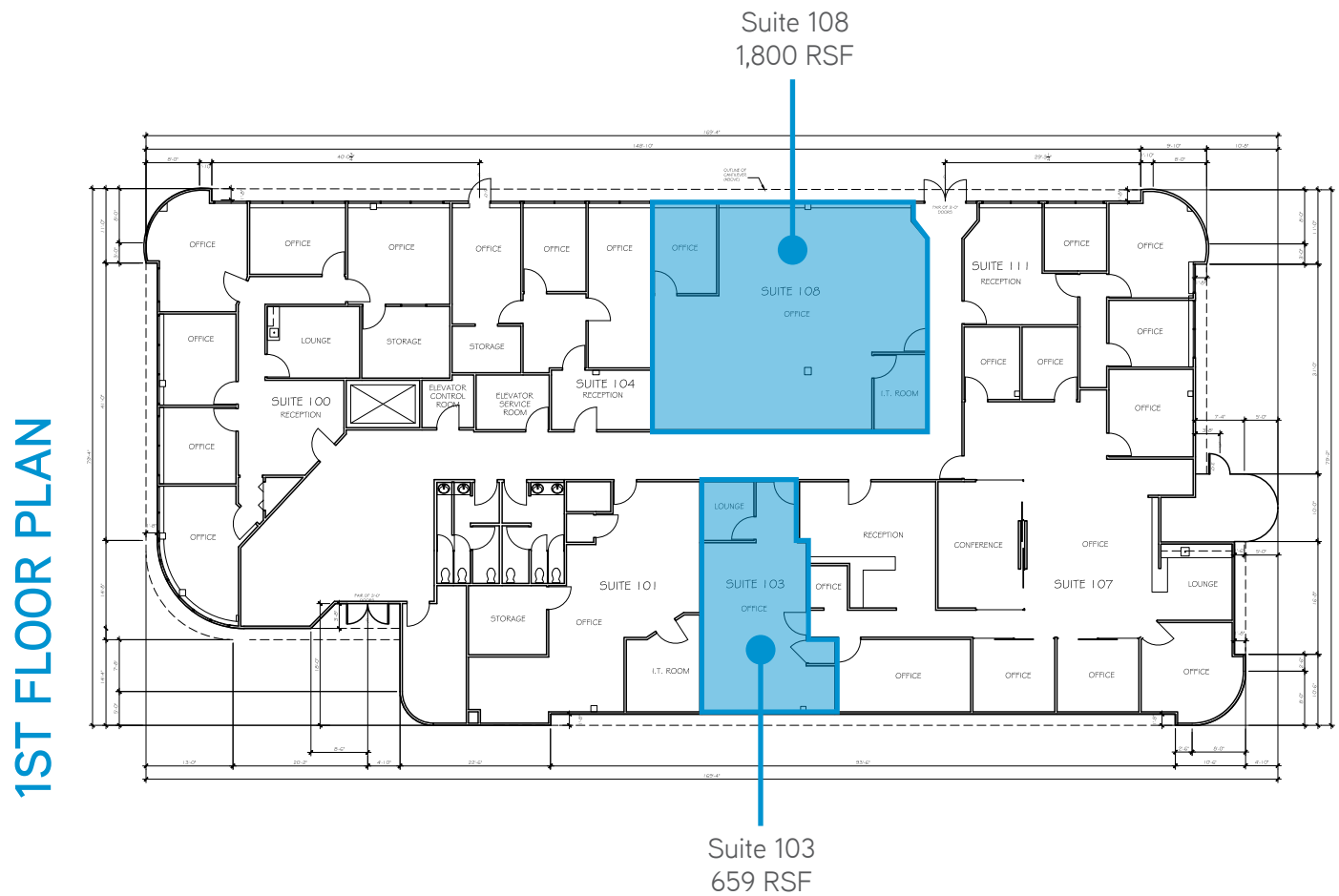
FOR LEASE > OFFICE SPACE

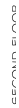
Corporate Oaks

LENEXA, KANSAS

Property Features

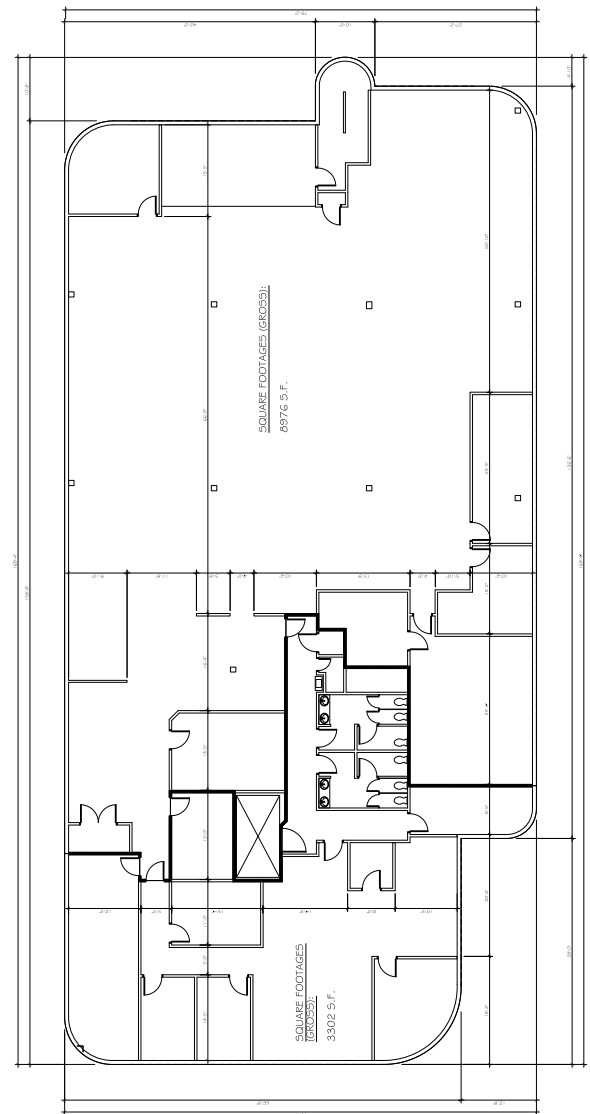
- > Quiet location just south of 95th Street
- > Excellent access to I-35
- > Owner-occupied building
- > Located within a half-mile of retail amenities at 95th & Quivira
- > Lease rate: \$18.50 PSF full service





Suite 202
1,568 RSF

3RD FLOOR PLAN



SQUARE FOOTAGES (GROSS):
8976 S.F.

SQUARE FOOTAGES
(GROSS): 3302 S.F.



MATT STOVER
+1 816 556 1116
KANSAS CITY, MO
matt.stover@colliers.com

COLLIERS INTERNATIONAL
4520 Main Street, Suite 1000
Kansas City, MO 64111
www.colliers.com

