

Colliers

For Lease

[colliers.com/Reno](http://colliers.com/Reno)

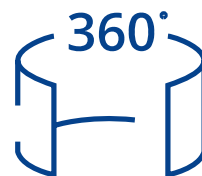


10539 Professional Circle  
Reno, NV 89521

Available Space | Suite 101

±5,827 SF

Available Suite Recently Remodeled  
and Ready for Immediate Occupancy

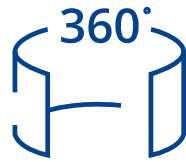


View Virtual  
Tour Here

Accelerating success.



# For Lease



View Virtual  
Tour Here

## Property Overview

Address:	10539 Professional Circle
Location:	Reno, NV 89521
Available Space:	Suite 101: ±5,827 ( <a href="#">Virtual Tour</a> )
Parking:	Free surface level parking spaces
Zoning:	South Meadows PUD, Office Building
Lease Rate:	\$2.10/SF/MO Full Service

## Building Comments

Building has welcoming lobby and shared restrooms. Parking around the building with easy access for guests, clients and staff. Building has outstanding visibility from I-580/US 395. Ample surface level parking with visitor spaces at entry. Building is professionally maintained.

## Suite 101 Comments

Consisting of 5,827 SF, the space is located on the first floor with outstanding access and visibility off the main lobby. The suite was recently remodeled and is in move in ready condition with new flooring, LED lighting and paint. The layout includes a reception area, conference room, storage room, break area with sink, server room, bull pen and eleven private offices on the window line. Suite also has a rear entry ideal for staff to access the back parking lot. The landlord will consider medical use and is willing to provide additional construction allowances for qualified tenants and terms. Building signage with visibility on I-580 may be available. Rental rate is full service and inclusive of janitorial and utilities.



### Contact:

#### **Melissa Molyneaux, SIOR, CCIM**

Executive Vice President

+1 775 823 4674

Melissa.Molyneaux@colliers.com

NV Lic. BS.0144599.LLC

#### **Jason Hallahan**

Associate

+1 775 287 5610

Jason.Hallahan@colliers.com

NV Lic S.0200644

### **Colliers**

5520 Kietzke Lane, Suite 300

Reno, Nevada 89511

+1 775 823 9666

colliers.com/reno

10539 Professional Circle | For Lease

# Available Space | Suite 101

 Suite 101: 5,827 SF  Common Area

 [View Virtual Tour Here](#)

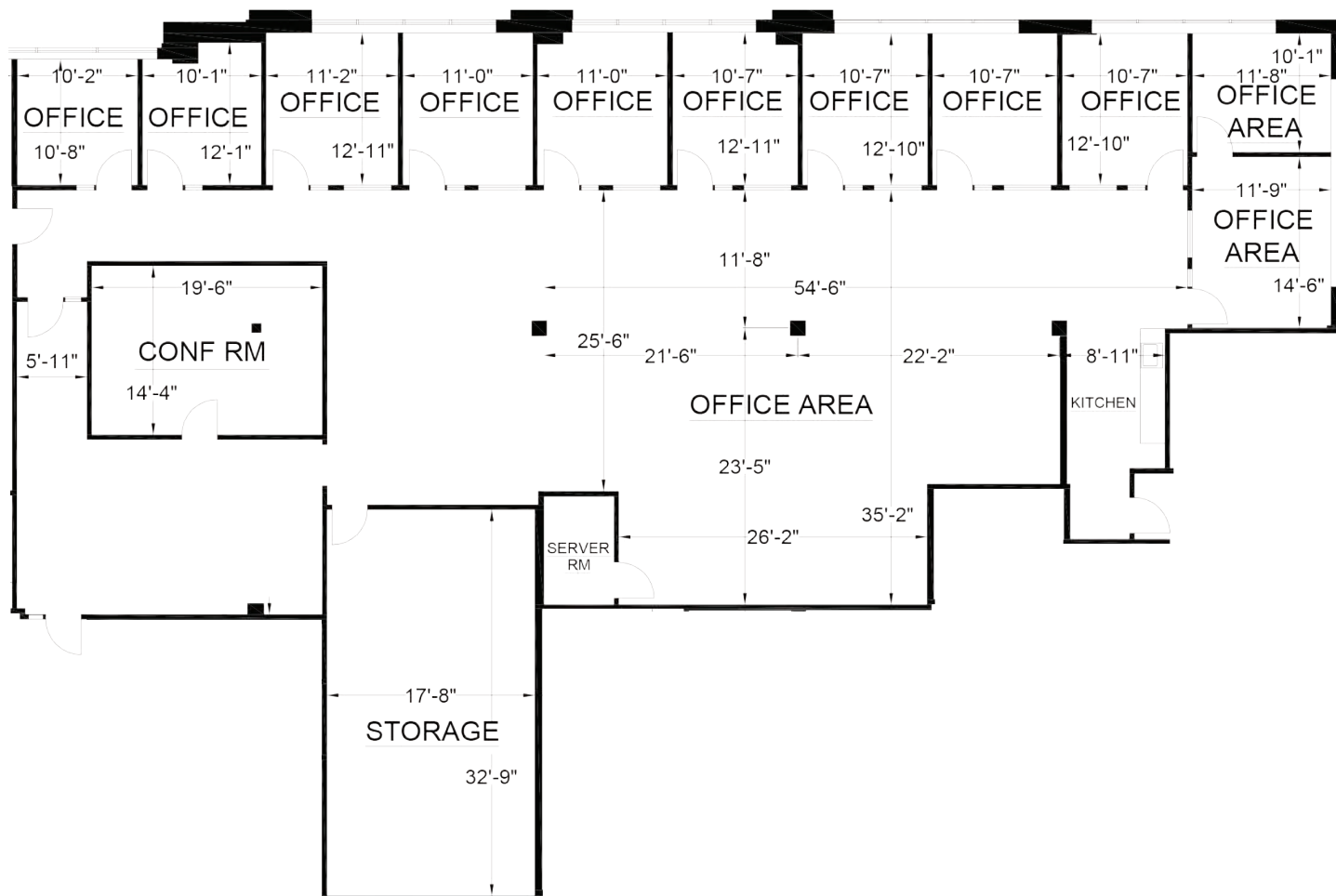


Signage Opportunity





# Available Space | Suite 101





10539 Professional Circle | For Lease

# Property Photographs



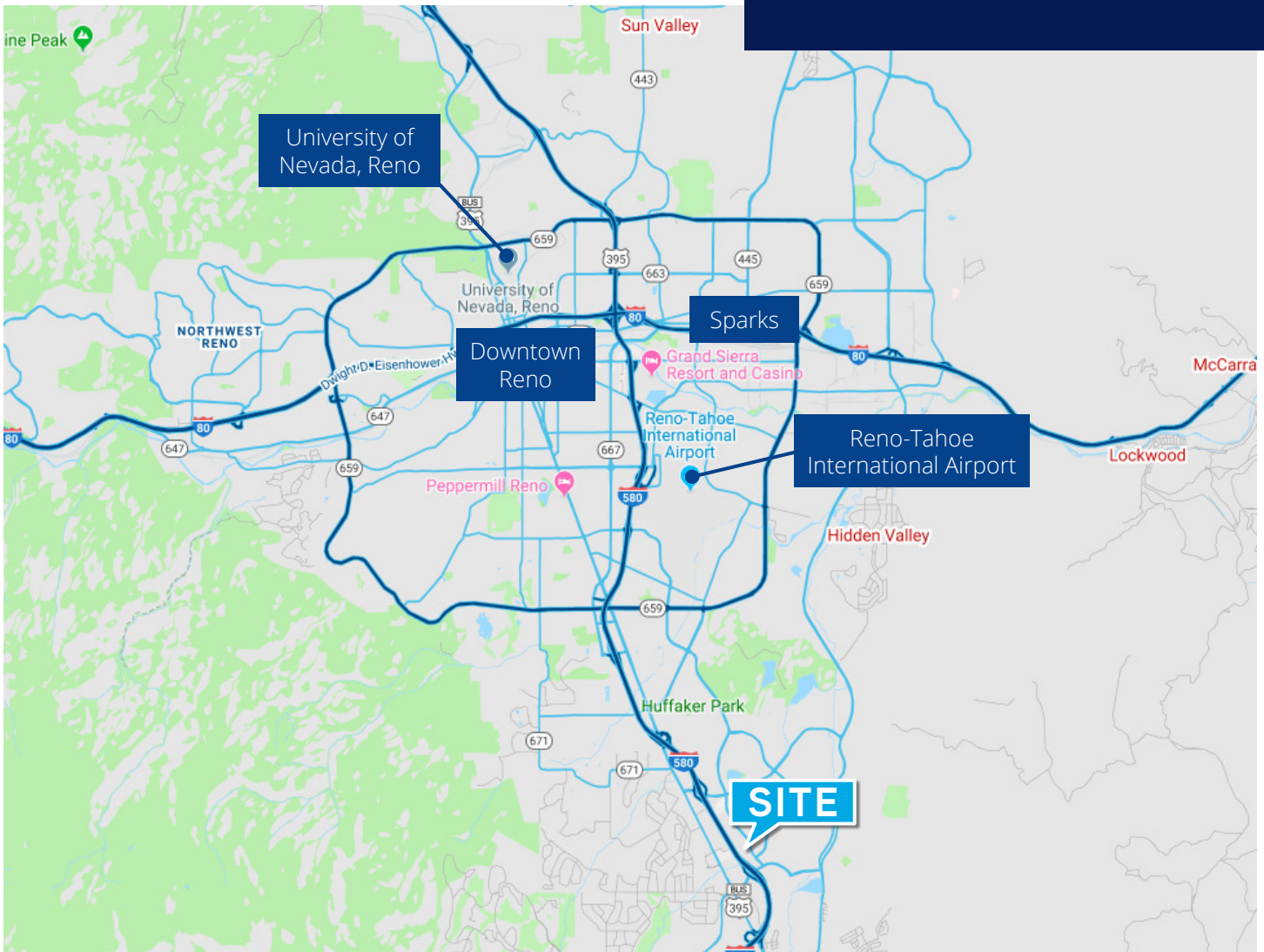


# South Meadows Overview





# Location



This document/email has been prepared by Colliers for advertising and general information only. Colliers makes no guarantees, representations or warranties of any kind, expressed or implied, regarding the information including, but not limited to, warranties of content, accuracy and reliability. Any interested party should undertake their own inquiries as to the accuracy of the information. Colliers excludes unequivocally all inferred or implied terms, conditions and warranties arising out of this document and excludes all liability for loss and damages arising there from. This publication is the copyrighted property of Colliers and /or its licensor(s). © 2025. All rights reserved. This communication is not intended to cause or induce breach of an existing listing agreement.

## Contact



**Melissa Molyneaux, SIOR, CCIM**  
Executive Vice President  
+1 775 823 4674  
Melissa.Molyneaux@colliers.com  
NV Lic. BS.0144599.LLC



**Jason Hallahan**  
Associate  
+1 775 333 6969  
Jason.Hallahan@colliers.com  
NV Lic S.0200644