

VIEW ONLINE 

colliers.com/richmond



Major hotel and retail amenities within the park

FOR LEASE | Moorefield Commons I
9711 Farrar Ct | Richmond, VA

FEATURES

- 2,815 RSF available
- Ample parking
- Conveniently located in the Moorefield Office Park
- Major hotel and retail amenities within the park
- Office park environment with walking trails, 3 lakes, Sheraton Hotel, Applebee's Restaurant



David Wilkins
Executive Vice President
+1 804 267 7238
david.wilkins@colliers.com

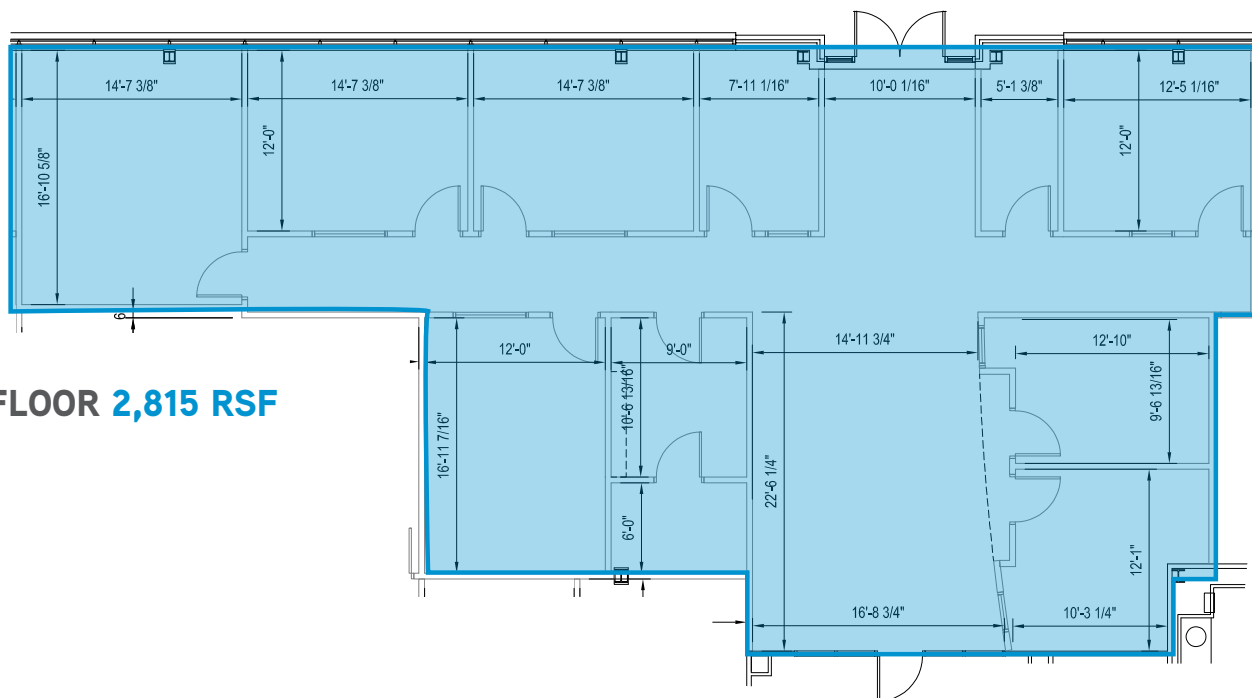
Rebecca Barricklow
Assistant Vice President
+1 804 267 7228
rebecca.barricklow@colliers.com

Catherine Walker
Associate
+1 804 968 1978
catherine.walker@colliers.com

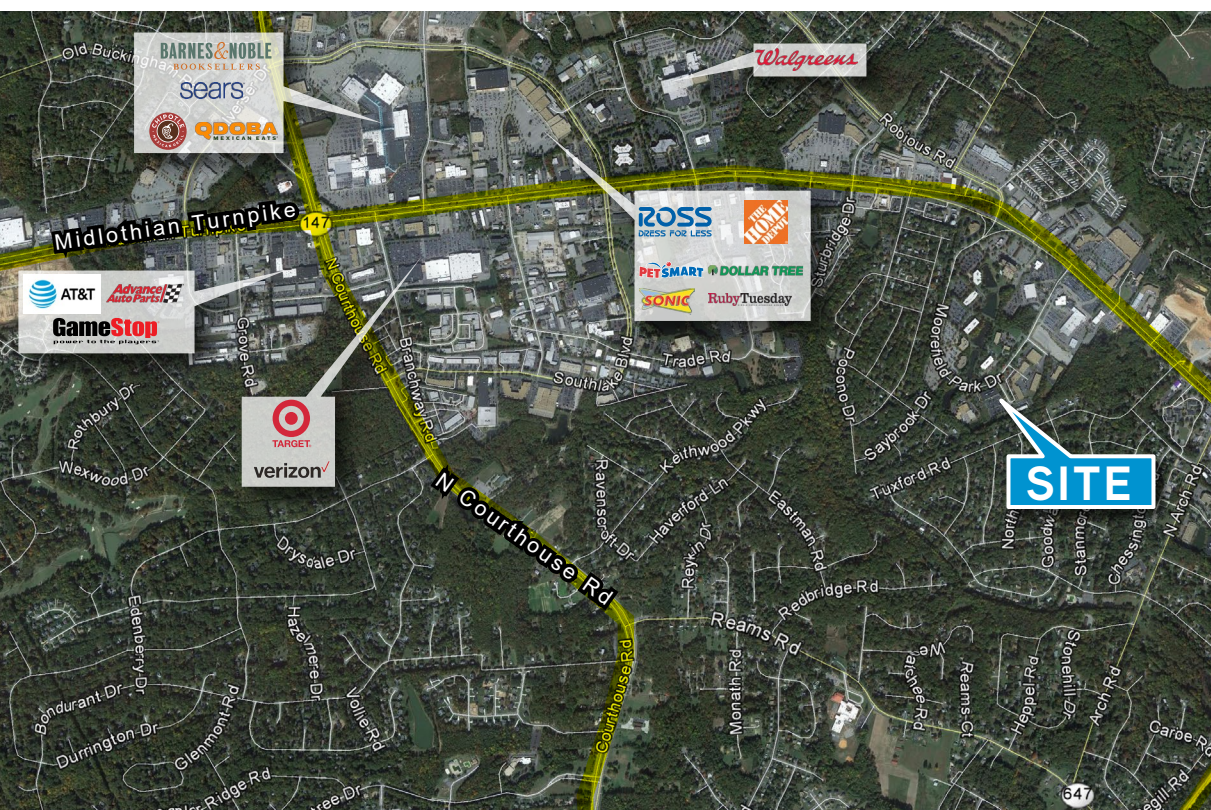
Colliers International
2221 Edward Holland Dr
Suite 600 | Richmond, VA
P: +1 804 320 5500
F: +1 804 320 4839

Accelerating success.

FOR LEASE | Moorefield Commons |
9711 Farrar Ct | Richmond VA



FIRST FLOOR 2,815 RSF



David Wilkins

Executive Vice President
+1 804 267 7238
david.wilkins@colliers.com

Rebecca Barricklow

Assistant Vice President
+1 804 267 7228
rebecca.barricklow@colliers.com

Catherine Walker

Associate
+1 804 968 1978
catherine.walker@colliers.com

Colliers International | 2221 Edward Holland Dr | Suite 600 | Richmond, VA 23230
P: +1 804 320 5500 | F: +1 804 320 4839

This document has been prepared by Colliers International for advertising and general information only. Colliers International makes no guarantees, representations or warranties of any kind, expressed or implied, regarding the information including, but not limited to, warranties of content, accuracy and reliability. Any interested party should undertake their own inquiries as to the accuracy of the information. Colliers International excludes unequivocally all inferred or implied terms, conditions and warranties arising out of this document and excludes all liability for loss and damages arising there from. This publication is the copyrighted property of Colliers International and/or its licensor(s). ©2021. All rights reserved.



Accelerating success.