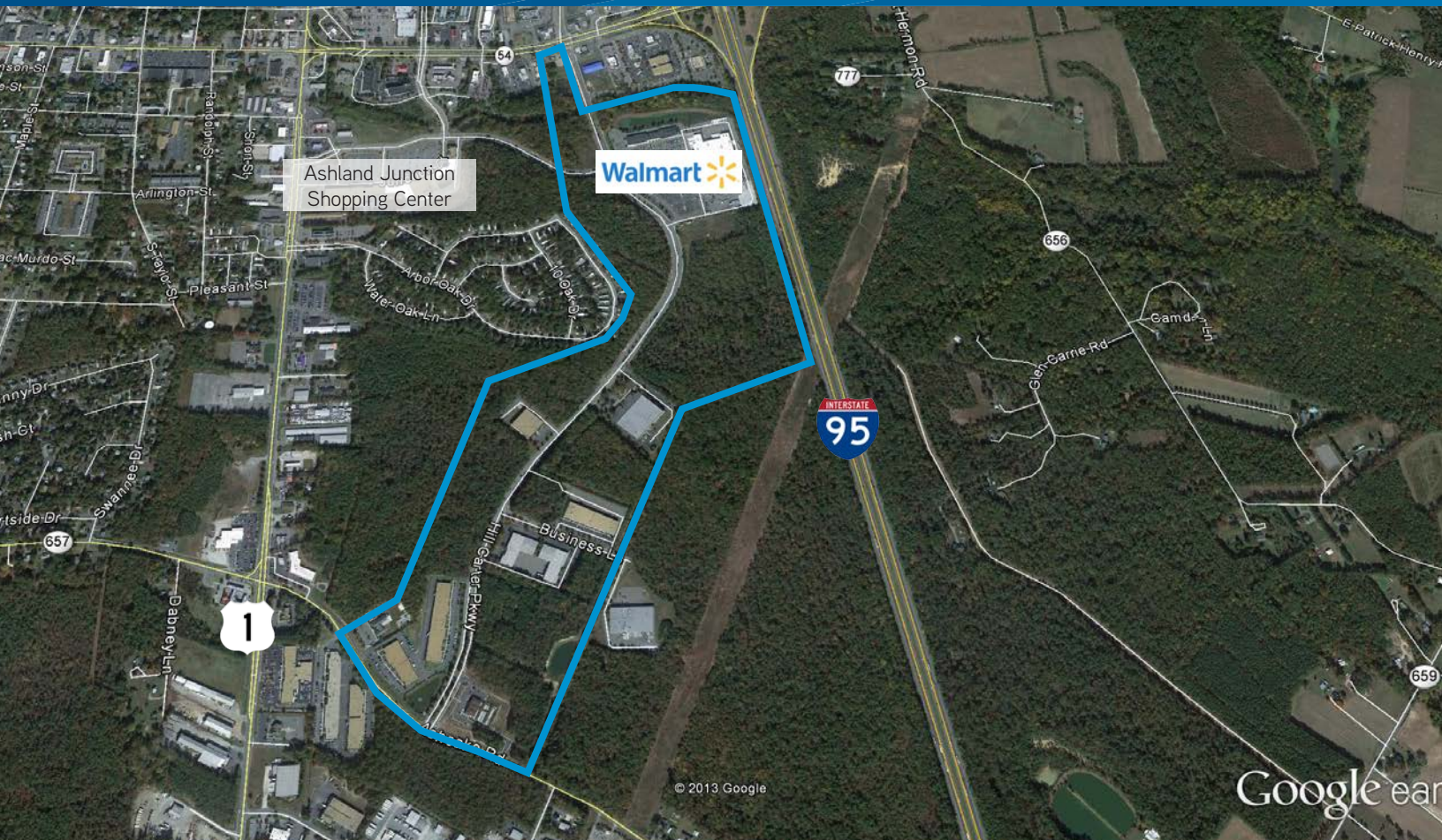


FOR SALE > LAND ±6 - ±20.85 ACRES



Ashland Business Park

HILL CARTER PARKWAY | ASHLAND, VA 23005



> This well-maintained, master planned park offers sites of various sizes adjoining and across from the Ashland Walmart. Hill Carter Parkway has connections to Ashland Junction Shopping Center, Route 54, Route 1 and Ashcake Road.

Property Features

- > Located at the southwest quadrant of Route 54 and I-95
- > Zoned M-1c (Limited Industrial Conditional) and PSCc (Planned Shopping Center District Conditional)
- > Public water and sewer, natural gas
- > Wooded, generally on grade
- > Road frontage on Junction Drive & Hill Carter Parkway with access to Route 54 at a signalized intersection
- > Parcels 9 (5.98 acres) and Parcel 8 (20.85 acres) – Sale Price: \$75,000/acre
- > Parcels 3 and 5 are unavailable at this time

AGENT: BILL MATTOX, SIOR
804 591 2428
RICHMOND, VA
bill.mattox@colliers.com

AGENT: DAVID WILLIAMS, SIOR, CCIM
804 591 2405
RICHMOND, VA
david.m.williams@colliers.com

COLLIERS INTERNATIONAL
6606 W. Broad Street, Suite 400
Richmond, VA 23230
www.colliers.com

Ashland Business Park

Ashland Business Park

Retail - Parcel 3 - 6.566 acres, 3.2 usable
(unavailable at this time)

Retail - Parcel 5 - 2.478 acres
(unavailable at this time)

Industrial Parcel 8 - 20.85 acres

Industrial Parcel 9 - 5.98 acres

Industrial Parcel 6 - 8.3 acres - **SOLD**

Industrial Parcel 7 - 34.61 acres - **SOLD**

