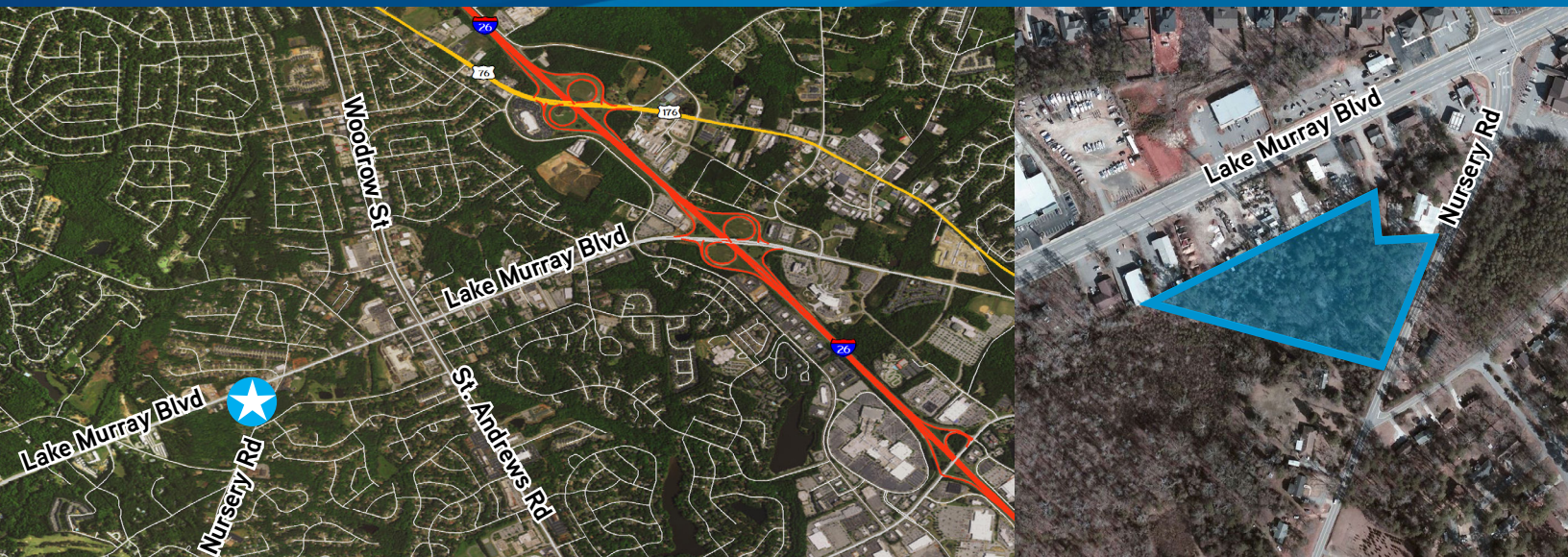


FOR SALE > ±4.25-ACRE PARCEL



# 7329 Nursery Road

COLUMBIA, SOUTH CAROLINA 29212



## Developable Land Near Irmo

- > Available development site: ±4.25 acres
- > Located near Lake Murray Blvd and within 1.5 miles of I-26
- > Zoned Lexington County C-1 Commercial District - General
- > **Purchase Price: \$425,000**

### DEMOGRAPHICS - 2020 ESTIMATE

	<u>1 Mile</u>	<u>3 Miles</u>	<u>5 Miles</u>
Population:	6,115	40,191	68,005
Number of Households:	2,126	14,805	25,744
Average Housesold Income:	\$90,684	\$86,348	\$89,736

## Contact Us

MARSHALL HOEFER  
803 401 4220 DIRECT  
[marshall.hoefer@colliers.com](mailto:marshall.hoefer@colliers.com)

This document has been prepared by Colliers International for advertising and general information only. Colliers International makes no guarantees, representations or warranties of any kind, expressed or implied, regarding the information including, but not limited to, warranties of content, accuracy and reliability. Any interested party should undertake their own inquiries as to the accuracy of the information. Colliers International excludes unequivocally all inferred or implied terms, conditions and warranties arising out of this document and excludes all liability for loss and damages arising there from. This publication is the copyrighted property of Colliers International and/or its licensor(s). ©2012. All rights reserved.

COLLIERS INTERNATIONAL  
1301 Gervais Street, Suite 600  
Columbia, SC 29201  
[www.colliers.com/columbia](http://www.colliers.com/columbia)