

# Dillman Square

12300 South 700 East (NEC)  
Draper, Utah 84020

For Lease:

- A • 2,600 SF**  
\$17.00 PSF + NNN (est. \$6.40 PSF)
  - Open space plan
  - Stained concrete floors
  - Exposed ceiling
- B • 1,556 SF**  
\$19.00 PSF+ NNN (est. \$6.40 PSF)
  - Former Day Spa space
  - Private treatment rooms w/ sinks
  - Shower
- C • 1,600 SF**  
\$19.00 PSF + NNN (est. \$6.40 PSF)
  - Built out as office space



Accelerating success.

## Colliers

6440 S. Millrock Dr. | Suite 500  
Salt Lake City, UT 84121  
Main: +1 801 947 8300  
[colliers.com](http://colliers.com)

Co-Tenants Include:

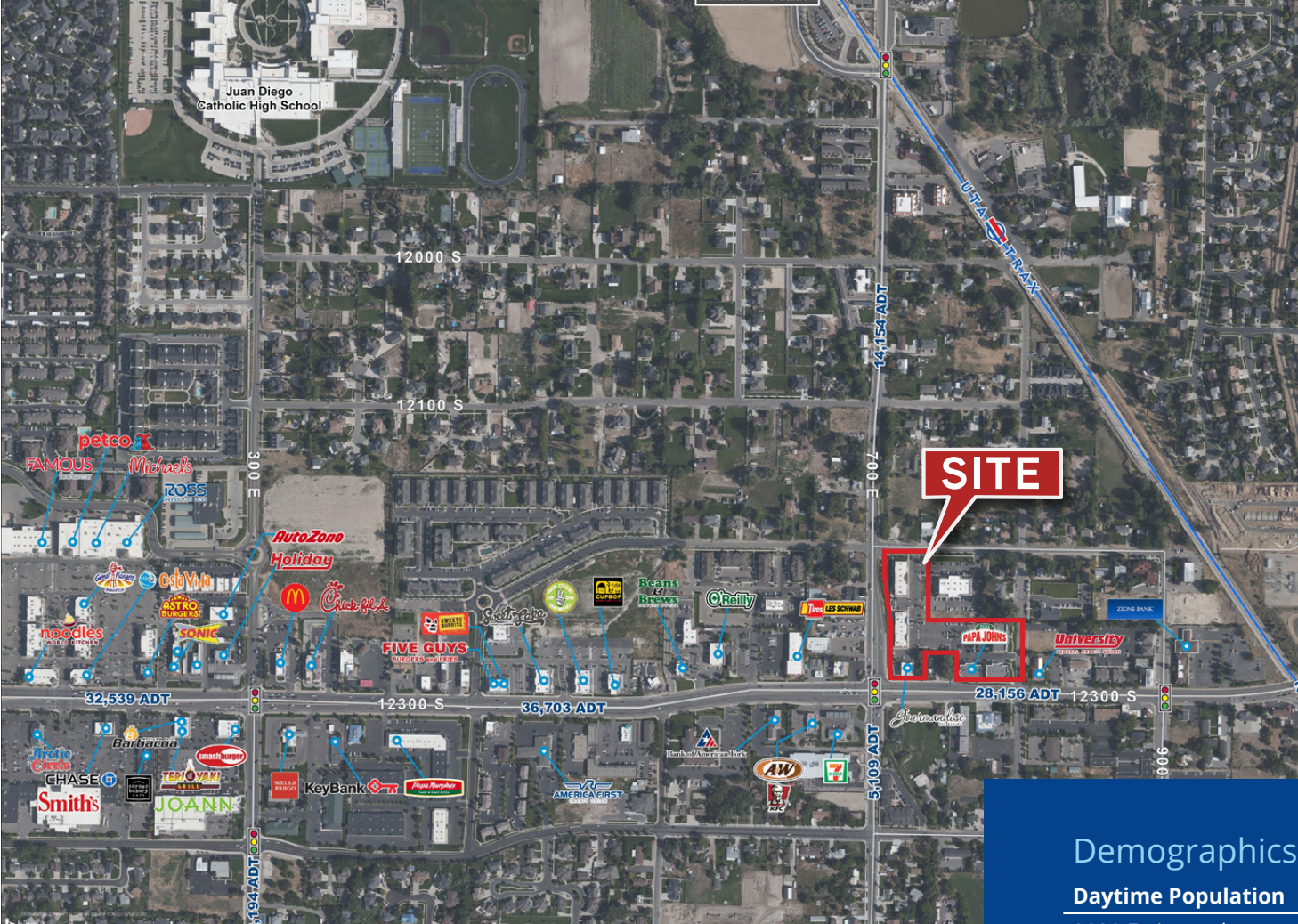


Contact:

## Mariko Mimnaugh

Vice President  
+1 801 947 8351  
[mariko.mimnaugh@colliers.com](mailto:mariko.mimnaugh@colliers.com)





## Colliers

6440 S. Millrock Dr. | Suite 500  
Salt Lake City, UT 84121  
Main: +1 801 947 8300  
colliers.com

## Contact:

### Mariko Mimnaugh

Vice President  
+1 801 947 8351  
mariko.mimnaugh@colliers.com

# Dillman Square

## 12300 South 700 East (NEC)

## Draper, Utah 84020

This document has been prepared by Colliers International for advertising and general information only. Colliers International makes no guarantees, representations or warranties of any kind, expressed or implied, regarding the information including, but not limited to, warranties of content, accuracy and reliability. Any interested party should undertake their own inquiries as to the accuracy of the information. Colliers International excludes unequivocally all inferred or implied terms, conditions and warranties arising out of this document and excludes all liability for loss and damages arising there from. This publication is the copyrighted property of Colliers International and/or its licensor(s). ©2021. All rights reserved.

## Demographics

### Daytime Population

	1 Mile	3 Mile	5 Mile
2020 Estimated	7,888	41,372	85,250

### Population

2020 Estimated	12,427	87,727	205,024
2025 Projected	13,747	97,449	226,667

### Median Age

2020 Estimated	32.6	33.8	34.2
----------------	------	------	------

### Median HH Income

2020 Estimated	\$107,738	\$105,627	\$101,951
2025 Projected	\$114,845	\$112,631	\$108,761

### Average HH Income

2020 Estimated	\$126,707	\$129,775	\$124,417
2025 Projected	\$141,394	\$144,696	\$138,864