

FOR LEASE > URBAN OFFICE

5865-5867 Centre Avenue

PITTSBURGH, PA 15206

7,500 to 45,000 SF Available



(2) Two-Story Connecting Buildings | Totaling 45,000 SF

Property Information

5865 Centre Avenue | 15,000 SF

5867 Centre Avenue | 30,000 SF

- > Brick/masonry with poured concrete
- > New windows and exterior facade treatment
- > New entry lobbies
- > Possible indoor parking
- > New ADA compliant elevators
- > Pittsburgh's hottest submarket
- > Great high ceilings & potential for exposed ductwork
- > Potential for building signage
- > Sprinkler system
- > ADA compliant restrooms on each floor
- > Within walking distances of Whole Foods and numerous restaurants
- > Easy access to public transportation and new transit center

Located in the heart of Pittsburgh's thriving East End, 5865 - 5867 Centre Avenue is an exciting new office redevelopment offering up to 45,000 square feet of high quality office space. The building will offer high ceilings and exposed ductwork, while oversized windows will provide for ample natural light. Located just a short walk from Whole Foods, the shops of Eastside, the new Hotel Indigo and Ace Hotel, the building will be an excellent option for those tenants seeking superb office space in the Shadyside and East Liberty neighborhoods.

Demographics

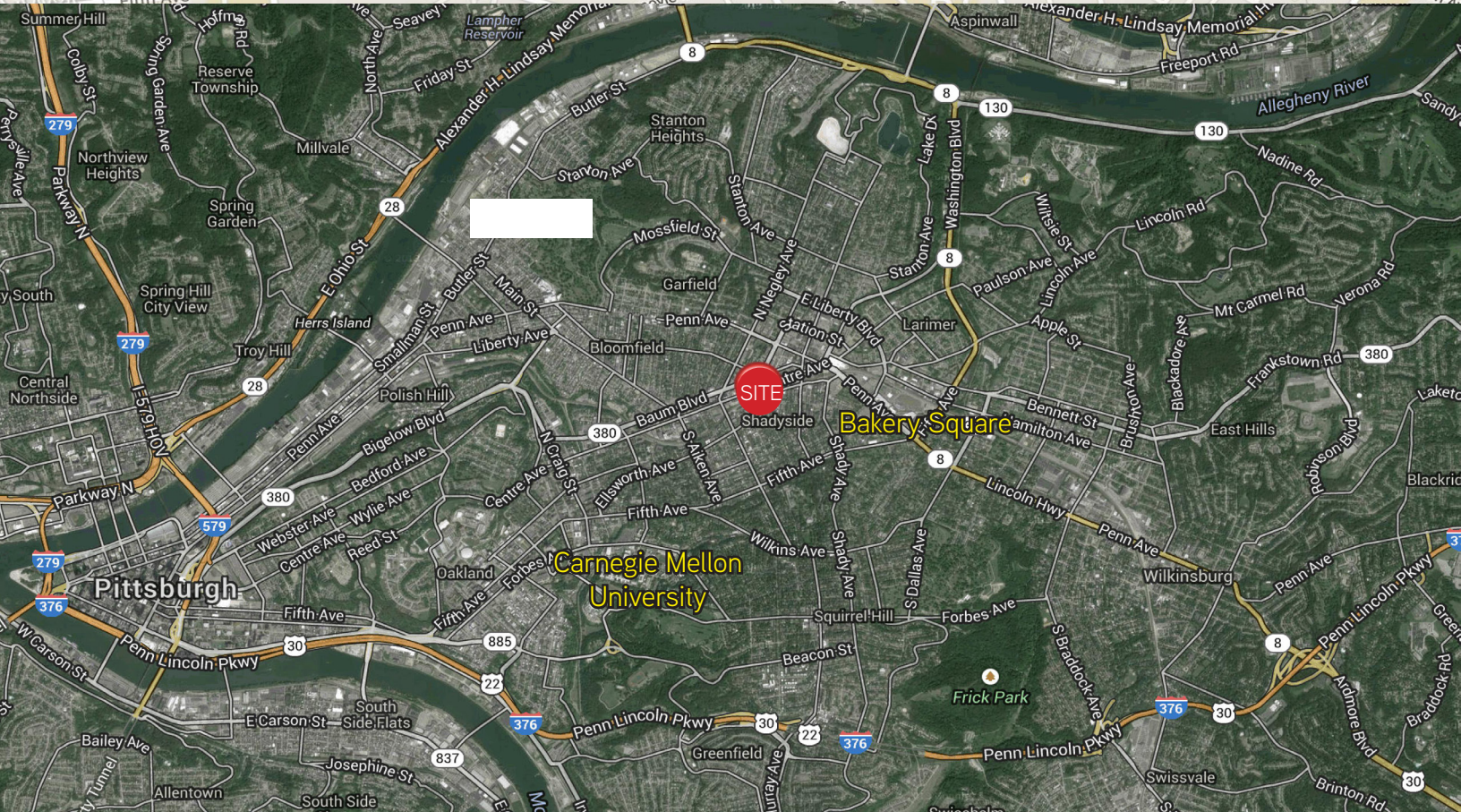
	1 Mile	3 Mile	5 Mile
Population	34,552	179,136	340,290
Number of Households	18,019	81,661	153,847
Average Household Income	\$63,014	\$58,507	\$58,016

MARK ANDERSON
VICE PRESIDENT | PITTSBURGH
RETAIL BROKERAGE
412 321 4200 | EXT. 222
PITTSBURGH, PA 15222
marke.anderson@colliers.com

JOHN BILYAK SIOR, CCIM
PRINCIPAL | PITTSBURGH
INDUSTRIAL BROKERAGE
412 321 4200 | EXT. 209
PITTSBURGH, PA 15222
john.bilyak@colliers.com

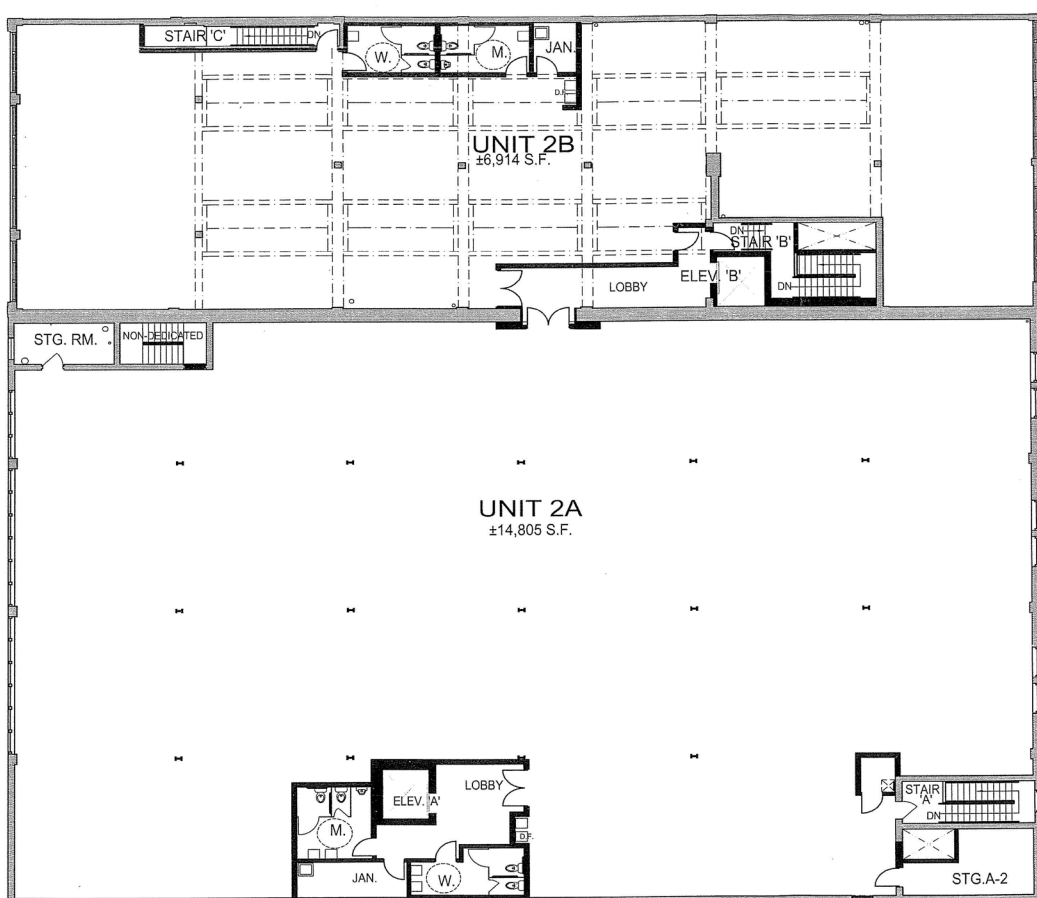
COLLIERS INTERNATIONAL | PITTSBURGH
Two Gateway Center
603 Stanwix Street, Suite 125
Pittsburgh, PA 15222
www.colliers.com

Maps and Aerials

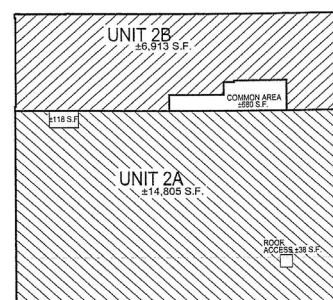




CENTRE AVE.



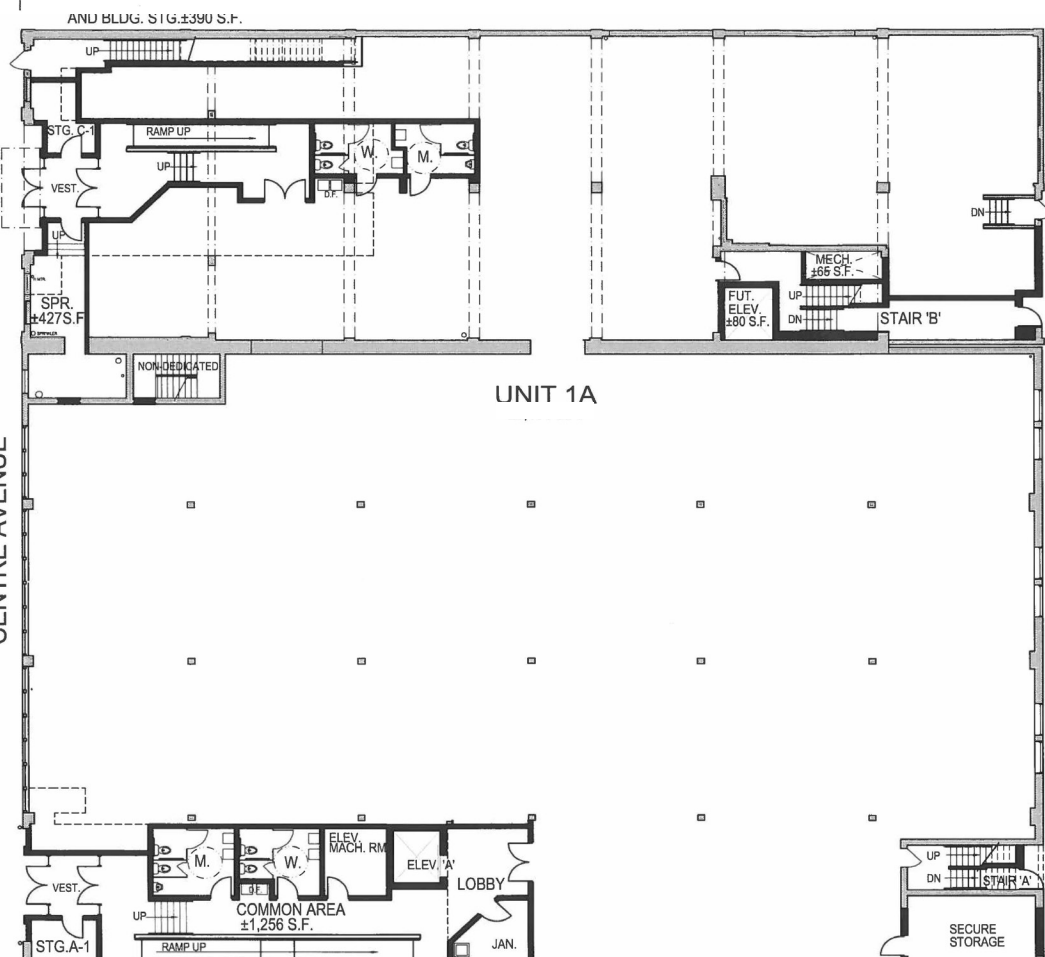
ALLEY



KEY PLAN- SECOND LEVEL

LEGEND - OPTION 2	
SPACE	LEASABLE AREA
SECOND FLOOR	±22,554 S.F. TOTAL FLR. FOOTPRINT
UNIT 2A	±14,805 S.F. (±65.6%)
UNIT 2B	±6,913 S.F. (±30.7%)
COMMON AREA	± 718 S.F. (±3.2%)
NON-DEDICATED	±118 S.F. (±0.5%)

CENTRE AVENUE



ALLEY

Contact Us

MARK ANDERSON
VICE PRESIDENT | PITTSBURGH
RETAIL BROKERAGE
412 321 4200 | EXT. 222
PITTSBURGH, PA 15222
marke.anderson@colliers.com

JOHN BILYAK SIOR, CCIM
PRINCIPAL | PITTSBURGH
INDUSTRIAL BROKERAGE
412 321 4200 | EXT. 209
PITTSBURGH, PA 15222
john.bilyak@colliers.com

COLLIERS INTERNATIONAL | PITTSBURGH
Two Gateway Center
603 Stanwix Street
Suite 125
Pittsburgh, PA 15222
www.colliers.com

The information contained herein has been given to us by the owner of the property or other sources deemed reliable. We have no reason to doubt its accuracy, but we do not guarantee it. All information should be verified prior to purchase or lease.

