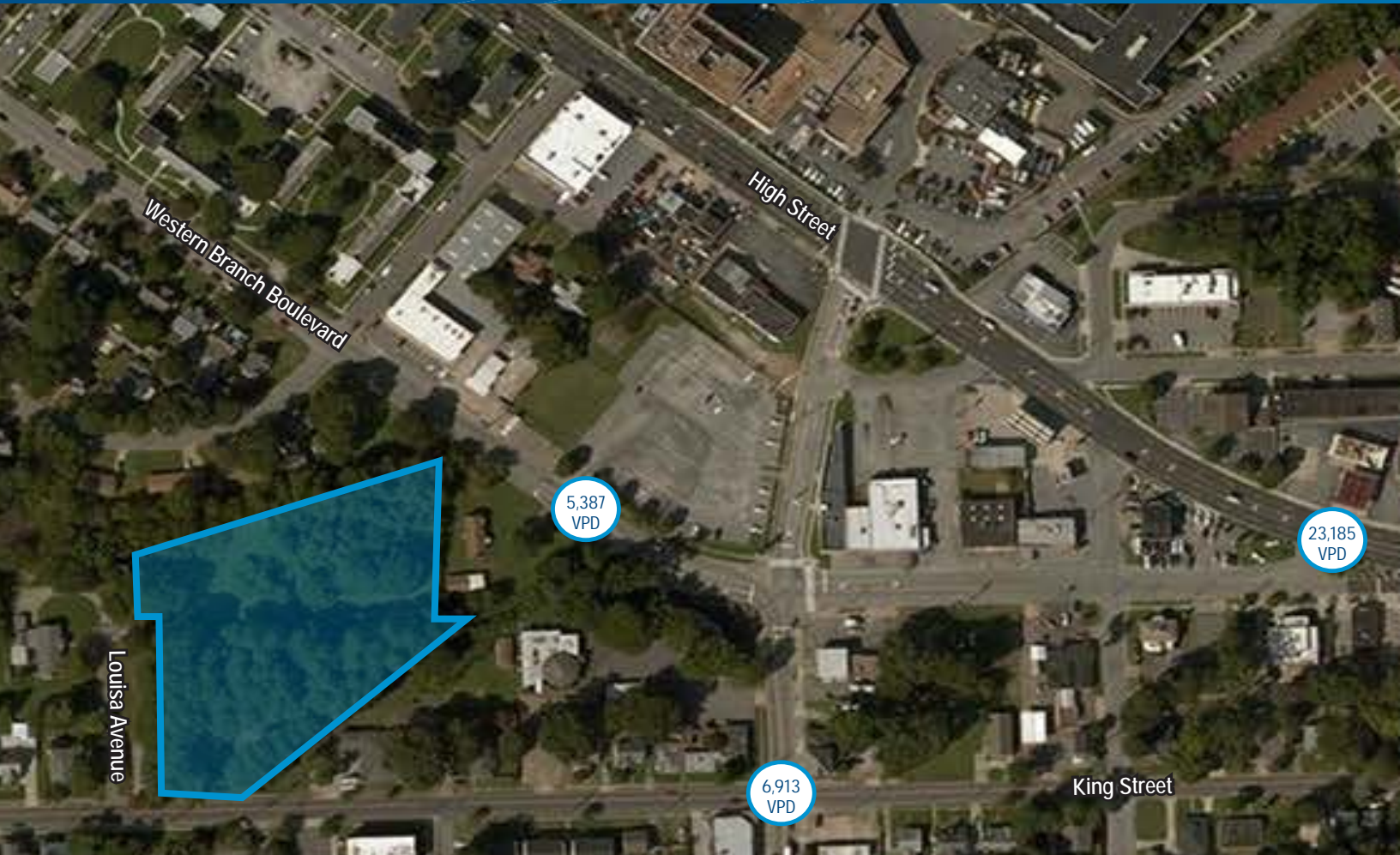


FOR SALE > LAND

3820 King Street - 3810 Louisa Avenue

PORTSMOUTH, VA 23701



Property Features

- > Centrally located in the City of Portsmouth
- > Total 3.18 acres
- > Zoned URH (Urban Residential High Density)
- > Multi-family
- > **For Sale: \$495,000**

DEMOGRAPHIC FACTS	1 MILE	3 MILES	5 MILES
POPULATION	12,963	77,793	228,693
DAYTIME POPULATION	9,179	56,852	146,429
AVERAGE HH INCOME	\$61,630	\$61,044	\$66,161
TRAFFIC COUNTS	KING STREET - ±6,913		

AGENT: SHARON HOLMSTROM
757 441 3636
NORFOLK, VA
sharon.holmstrom@colliers.com

AGENT: CHRISTOPHER TODD
757 752 1095
NORFOLK, VA
christopher.todd@colliers.com

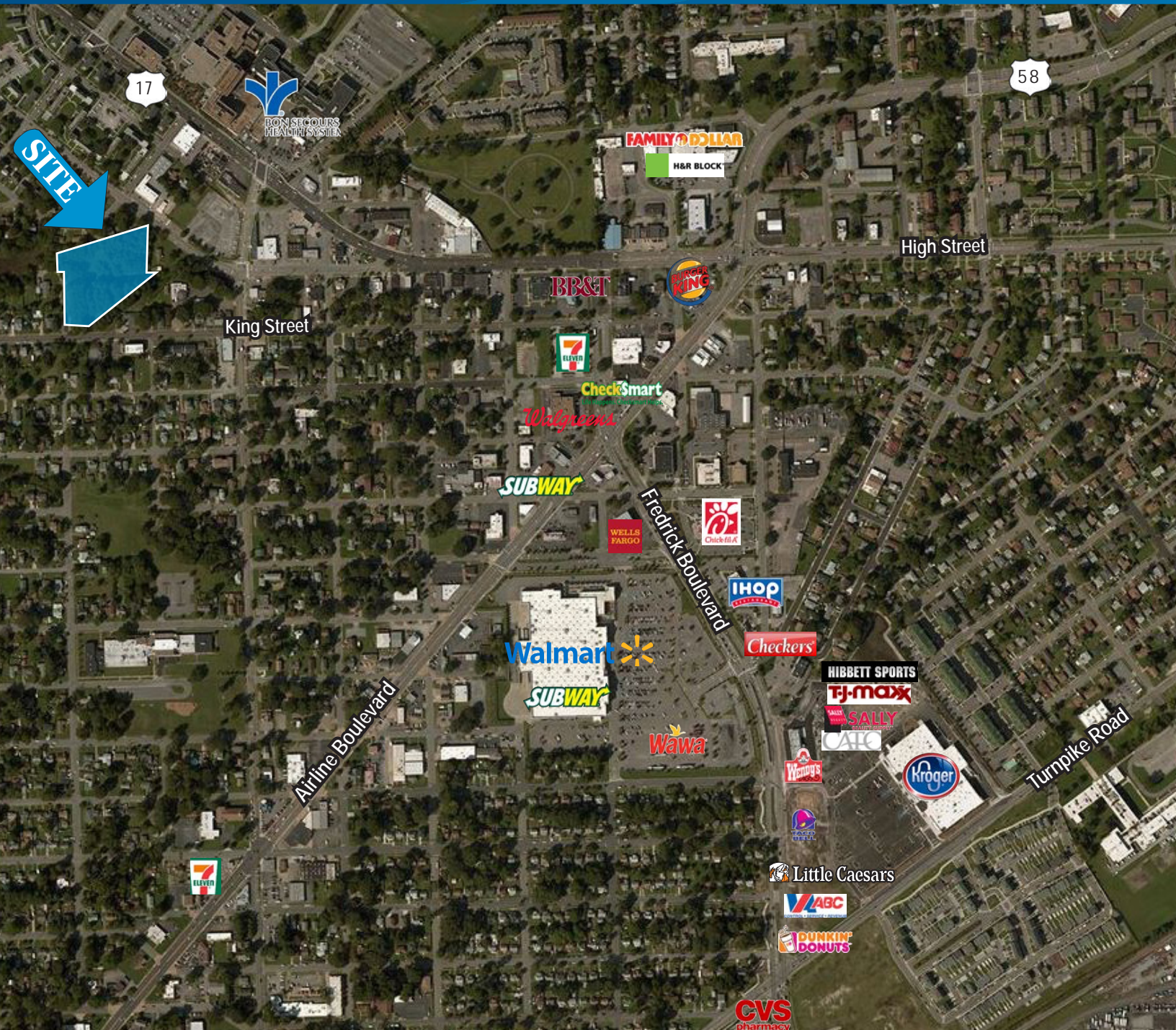
COLLIERS INTERNATIONAL
500 E. Main Street, Suite 808
Norfolk, VA 23510
www.colliers.com/norfolk

FOR SALE > LAND

3820 King Street - 3810 Louisa Avenue

PORTSMOUTH, VA 23701

Colliers
INTERNATIONAL



AGENT: SHARON HOLMSTROM
757 441 3636
NORFOLK, VA
sharon.holmstrom@colliers.com

AGENT: CHRISTOPHER TODD
757 752 1095
NORFOLK, VA
christopher.todd@colliers.com

COLLIERS INTERNATIONAL
500 E. Main Street, Suite 808
Norfolk, VA 23510
www.colliers.com/norfolk