



Legacy Business Center

308-312 SW 24th Street
Bentonville, AR

BUTCH GURGANUS
PRINCIPAL | BROKER
DIR: 479 845 1504
MOB: 479 644 7266
butch.gurganus@colliers.com

WADE SMITH
BROKERAGE | ARKANSAS
DIR: 479 845 1518
MOB: 214 924 1605
wade.smith@colliers.com



COLLIERS INTERNATIONAL
4204 S Pinnacle Hills Pkwy, Ste 102
Rogers, AR 72758
479 636 9000
www.colliers.com/arkansas

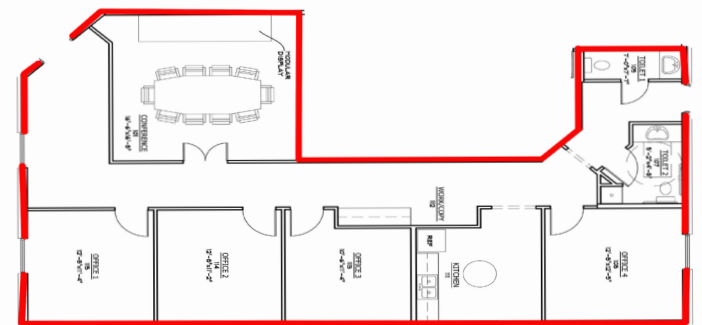
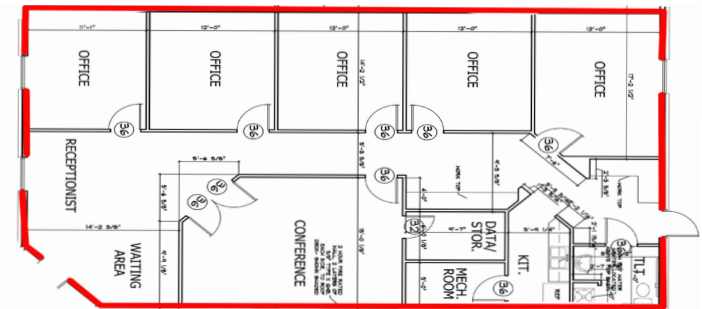
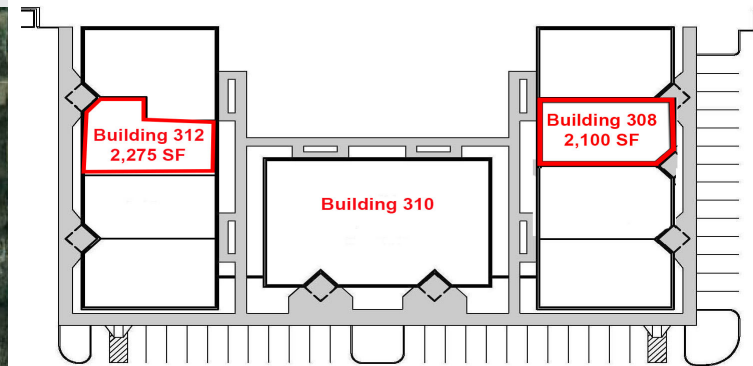
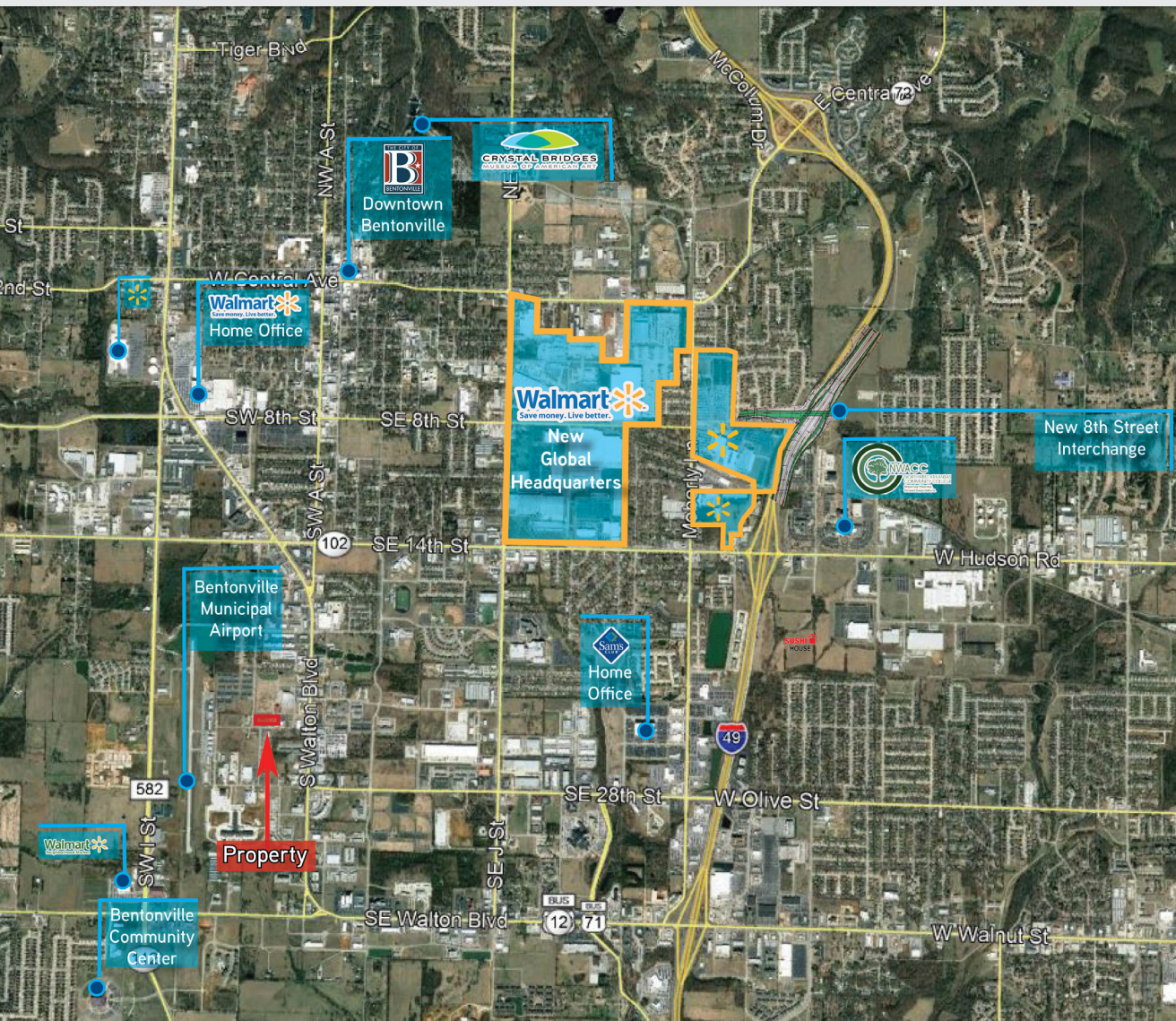
Accelerating success.

KEY FEATURES/HIGHLIGHTS

RATE: \$16.50 PSF

- › Utilities included
- › Building 308 - Suite 4 - 2,100 SF Available
- › Building 312 - Suite 4 - 1,650 SF Available, Two Restrooms
- › Located at NE Corner of SW D Street and 24th St
- › Less than 2 miles from the Walmart Home Office, Layout Center and Sam's Club Home Office

LEGACY BUSINESS CENTER > AERIAL



This document has been prepared by Colliers International for advertising and general information only. Colliers International makes no guarantees, representations or warranties of any kind, expressed or implied, regarding the information including, but not limited to, warranties of content, accuracy and reliability. Any interested party should undertake their own inquiries as to the accuracy of the information. Colliers International excludes unequivocally all inferred or implied terms, conditions and warranties arising out of this document and excludes all liability for loss and damages arising there from. This publication is the copyrighted property of Colliers International and/or its licensor(s). ©2016. All rights reserved.