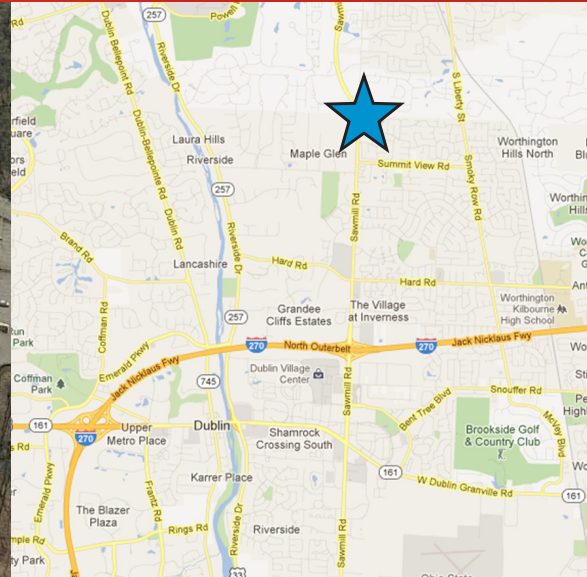


FOR SALE > LAND



7425 Sawmill Road

DUBLIN, OH 43016



7425 Sawmill Road > Land

- > 1.29 acres available
- > Convenient access to I-270
- > Located in front of Life Time Fitness at corner of Hard & Sawmill
- > Perfect for office/medical users
- > Ample amenities on Sawmill Road
- > Sale Price of \$375,000

Dublin Submarket Overview

- > Population: 64,340
- > Median Household Income: \$88,282
- > Per Capita Income: \$45,961
- > Median Age: 35.2
- > Education (over 25): 39.7% Bachelor's, 21.1% Master's

Contact Us

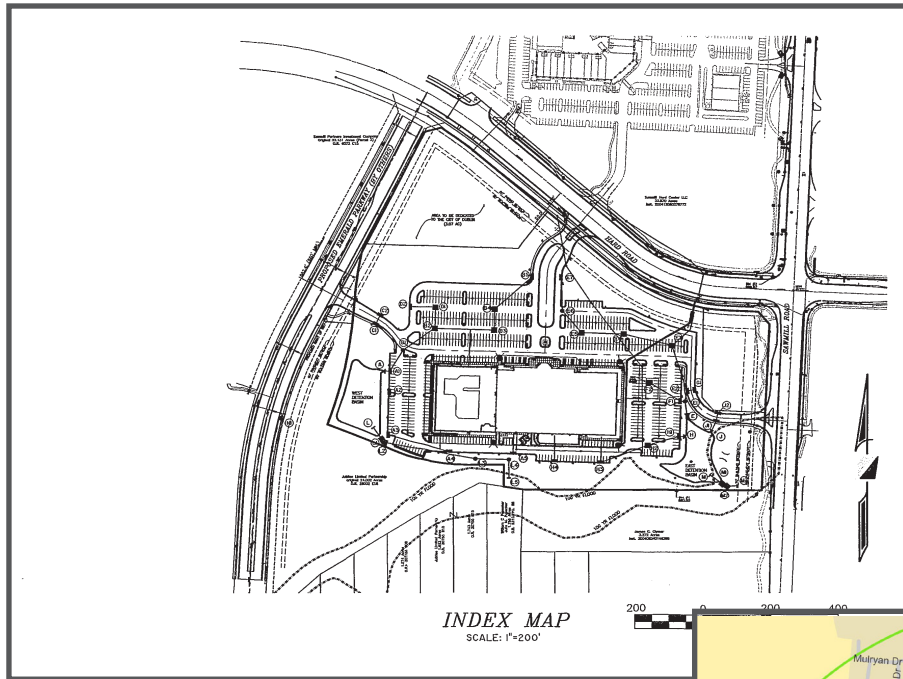
BRETT CISLER
614 437 4498
COLUMBUS, OH
brett.cisler@colliers.com

ANDREW JAMESON, SIOR CCIM
614 437 4500
COLUMBUS, OH
andrew.jameson@colliers.com

The information contained herein was obtained from sources believed reliable; however, Colliers International makes no guarantees, warranties, or representations as to the completeness or accuracy thereof. The presentation of this property is submitted subject to errors, omissions, change of price or conditions prior to sale or lease, or withdrawal without notice.

COLLIERS INTERNATIONAL
Two Miranova Place, Suite 900
Columbus, OH 43215
www.colliers.com

7425 Sawmill Road > Site Plan



> Traffic Count



Average Daily Traffic Volume

- ▲ Up to 6,000 vehicles per day
- ▲ 6,001 - 15,000
- ▲ 15,001 - 30,000
- ▲ 30,001 - 50,000
- ▲ 50,001 - 100,000
- ▲ More than 100,000 per day