

AVAILABLE

132,405 SF High Bay Warehouse and Office Facility



STATION PARK, 330-399 S. WARMINSTER RD, HATBORO, MONTGOMERY COUNTY, PA



FEATURES

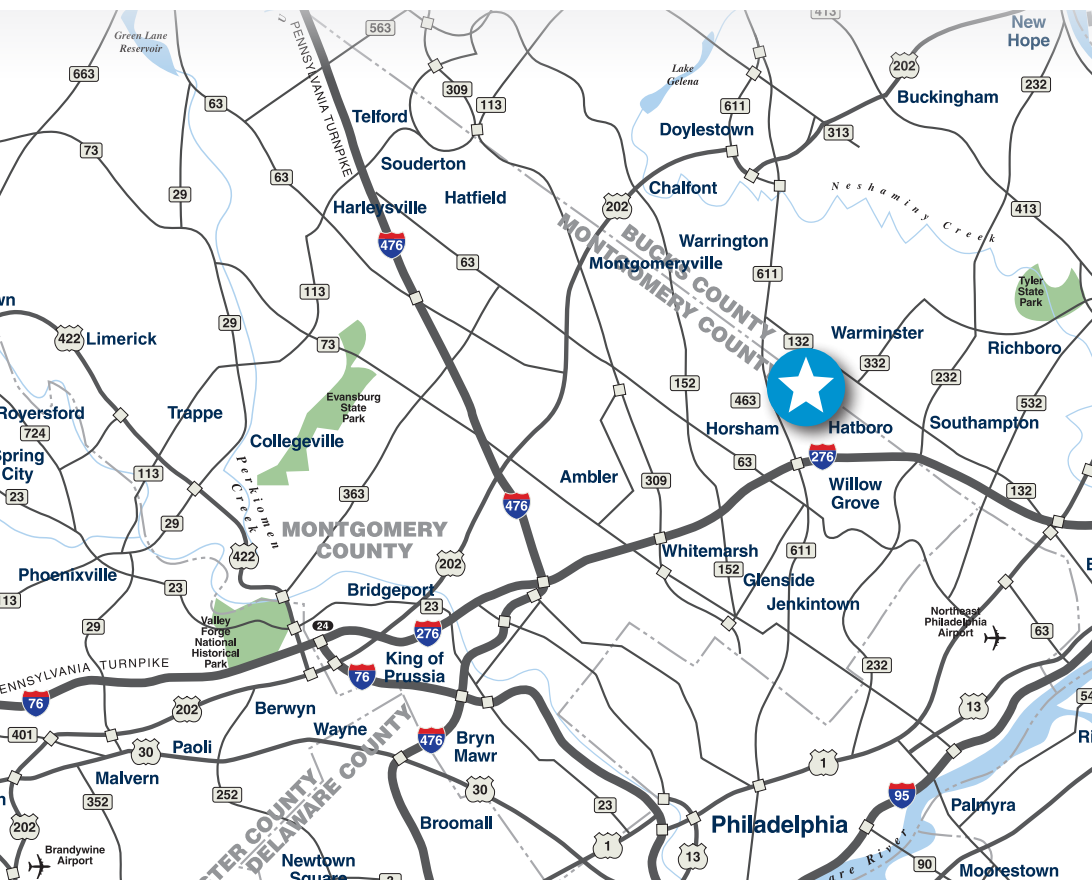
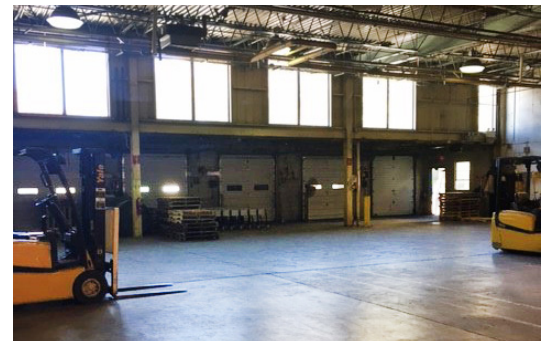
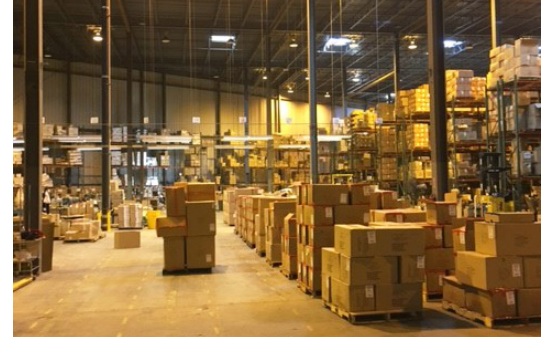
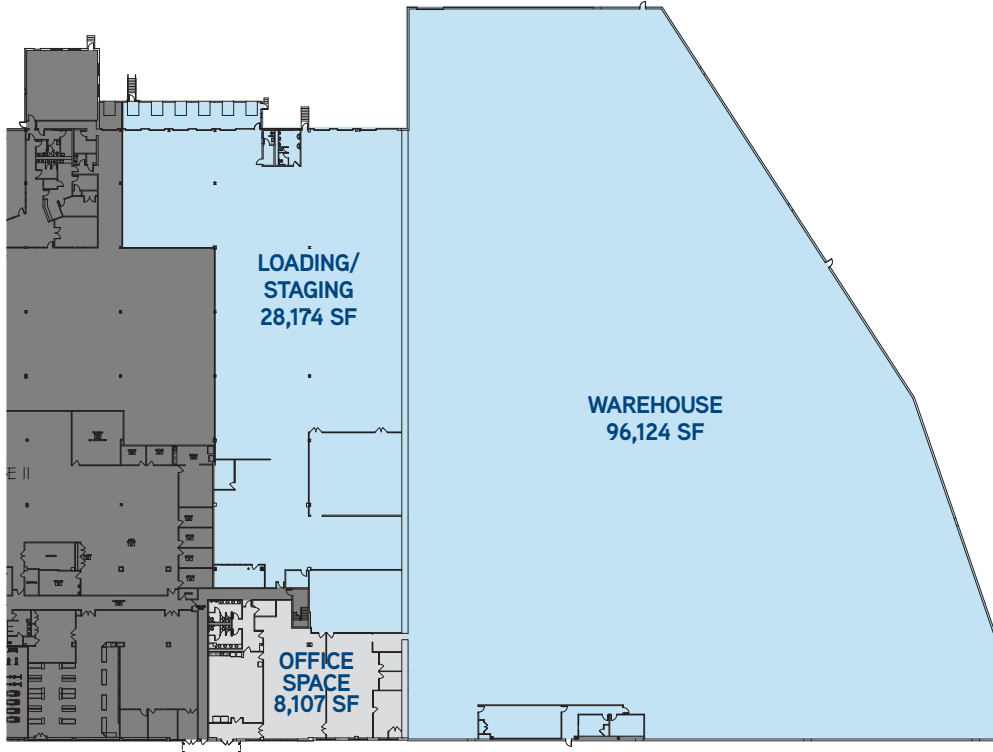
- › 419,047+/- SF office, flex, R&D, industrial, and recreational facility
- › 132,405+/- SF available
- › Up to 42' clear ceiling height
- › 9 tailgate loading docks and a 12'x14' door at grade
- › 1800 AMPS, 480/277 V and 208/120 V, 3-Phase electric service
- › Wet sprinkler system
- › 8,107+/- SF air-conditioned office space
- › Gas-radiant and ceiling suspended gas-fired unit heaters
- › Full service on-site café, fitness gym, and daycare
- › Potential trailer parking

CONTACT US

BARRY GREENBERG
SENIOR VICE PRESIDENT
+1 215 928 7547
barry.greenberg@colliers.com

COLLIERS INTERNATIONAL
Ten Penn Center
1801 Market Street
Suite 550
Philadelphia, PA 19103
+ 1 215 925 4600
www.colliers.com/philadelphia

SPACE PLAN



➤ The property is just 1.5 miles from Exit 343 of the Pennsylvania Turnpike (Willow Grove) and is in close proximity to Interstate 95, the East Coast's major North/South highway providing convenient access to the New Jersey Turnpike and bridges to New Jersey, and the region's major transportation arteries.

➤ Adjacent to SEPTA's Regional Rail Station (R2/Warminster)