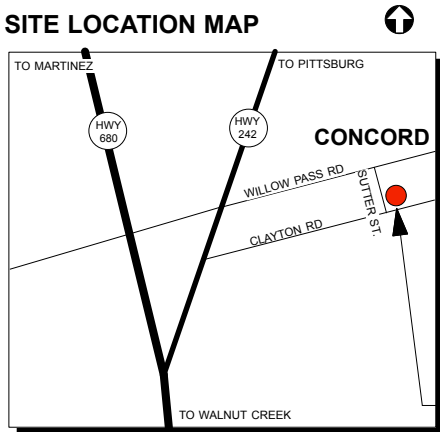
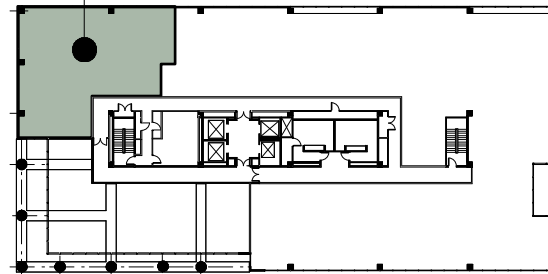


## SITE LOCATION MAP

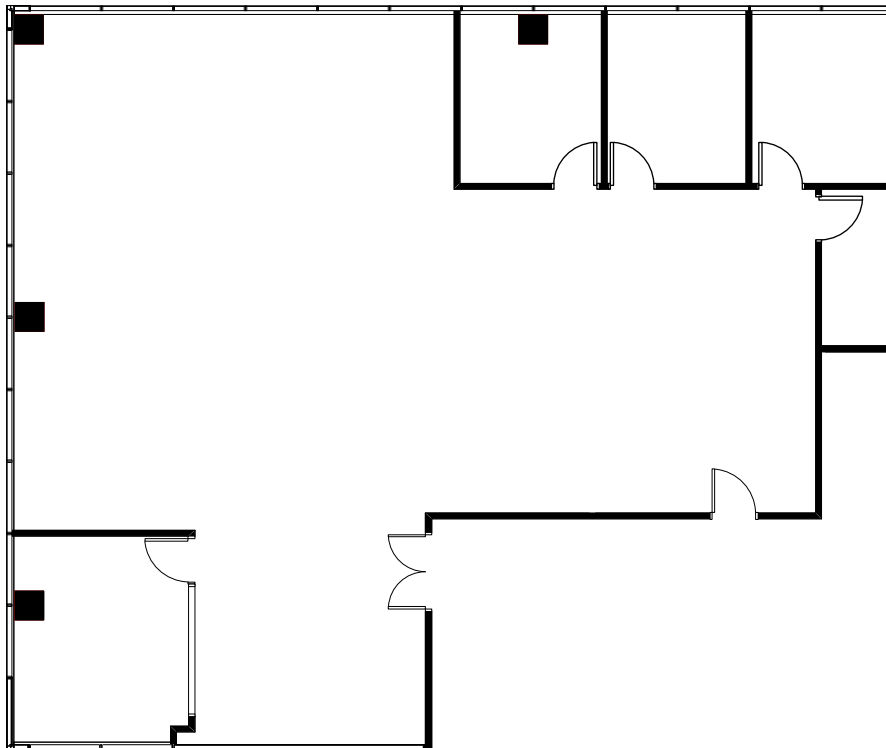


SUTTER SQUARE  
1800 SUTTER ST.  
CONCORD, CA.

SUITE FLOOR  
LOCATION



SECOND FLOOR KEY PLAN



SUITE 270



Colliers International  
1850 Mount Diablo Boulevard, Suite 200  
Walnut Creek, CA 94596 | United States  
[www.colliers.com](http://www.colliers.com)

LEASING AGENT

**Scott Ellis**  
(925) 279-5575

[scott.ellis@colliers.com](mailto:scott.ellis@colliers.com)

**Eric Erickson**  
(925) 279-5580

[eric.erickson@colliers.com](mailto:eric.erickson@colliers.com)

## Sutter Square

1800 Sutter Street  
Concord, CA 94520

Second Floor

Proudly Owned By:

**MERIDIAN**  
Buildings for Life

Approximate Area Calculations  
Subject To Verification:

2,983 rsf

As-built Plan To Be Verified

This information displayed while not guaranteed  
has been secured by sources we believe to be  
reliable. This information is subject to errors &  
omissions. Any tenant should conduct their own  
investigation.

Plan Revision - 2-15-18