

FOR SALE › RETAIL SPACE



1520 Haskell Avenue

LAWRENCE, KANSAS

PRICE REDUCED!



Property Description

This property is located in East Lawrence near the intersection of 15th Street and Haskell Avenue, with direct access to Haskell. The singlestory building sits on a large lot, which allows for an opportunity to expand the building square footage or parking lot. The property has a fenced area with a shelter and basketball court. Ideal for special uses, membership or spiritual organizations.

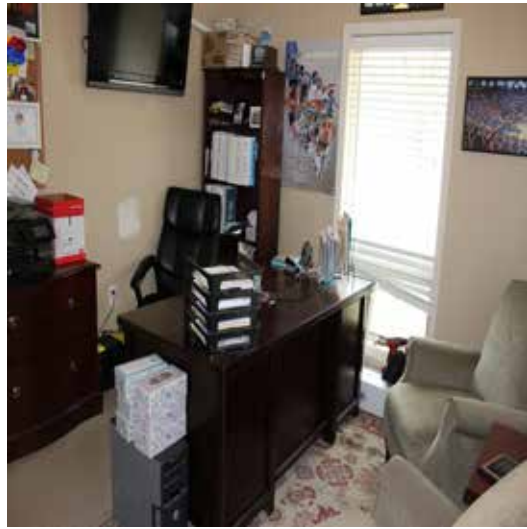
Property Highlights

- › Building size: 6,504 SF
- › Lot size: 78,408 SF
- › Year built/renovated: 1977/2009
- › PSF price: \$84.56
- › Sale price: ~~\$540,000~~ **\$530,000**
- › Zoning: RS7

AGENT: ALLISON VANCE MOORE
+1 785 865 3924
LAWRENCE, KS
allison.moore@colliers.com

COLLIERS INTERNATIONAL
805 New Hampshire, Suite C
Lawrence, KS 66044
www.colliers.com

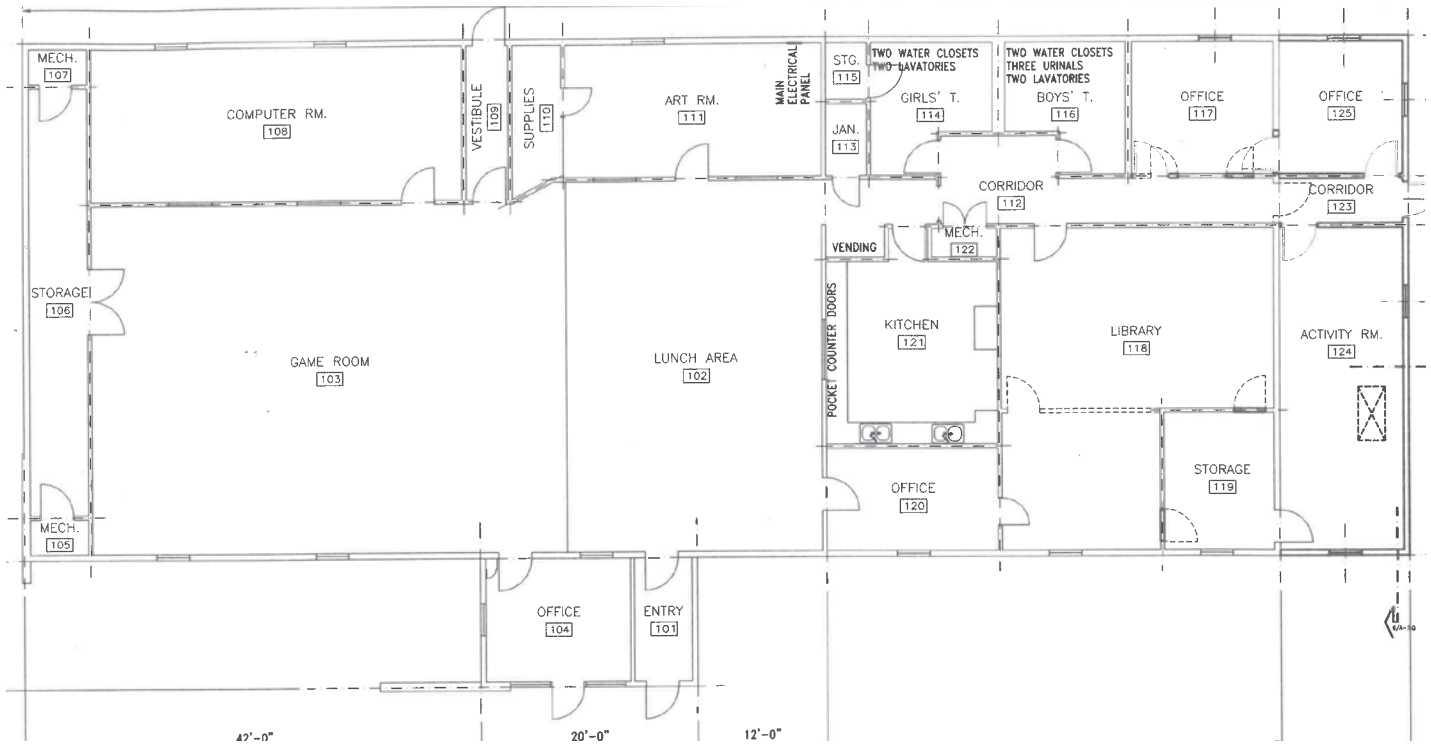
1520 Haskell Avenue > Photos



AGENT: ALLISON VANCE MOORE
+1 785 865 3924
LAWRENCE, KS
allison.moore@colliers.com

COLLIERS INTERNATIONAL
805 New Hampshire, Suite C
Lawrence, KS 66044
www.colliers.com

1520 Haskell Avenue > Floorplan



1520 Haskell Avenue > Aerial

