

FOR LEASE > OFFICE / WAREHOUSE



3601–3617 N Kimball Drive

KANSAS CITY, MISSOURI



Property Features

- > Available space:
 - > Suite 3605: 7,074 SF
 - > Suite 3615-3617: 4,980 SF
 - > Suite 3615: 2,410 SF
 - > Suite 3617: 2,570 SF
- > Total building area: 27,180 SF
- > Quality brick and block construction
- > Located within Northland Park
- > Year built: 1988
- > Loading: dock-high & drive-in
- > Ceiling height: 18'
- > Zoning: M1-5 - Light Industrial

DOUG HEDRICK SIOR, CCIM
+1 816 556 1136
KANSAS CITY, MO
doug.hedrick@colliers.com

TOM KENNEDY
+1 816 556 1118
KANSAS CITY, MO
tom.kennedy@colliers.com

COLLIERS INTERNATIONAL
4520 Main Street, Suite 1000
Kansas City, MO 64111
www.colliers.com

FOR LEASE > OFFICE / WAREHOUSE

3601-3617 N KIMBALL DRIVE

FLOOR PLAN



3601-3617 N KIMBALL DRIVE

AVAILABLE SPACES

3605 N Kimball Drive

- > Available space: 7,074 SF
- > Office area: BTS
- > Loading:
 - > 1 dock-high door (8'x9')
 - > 1 drive-in door (10'x12')
- > Electrical: 200 amp/single-phase
- > Lease rate: \$5.50/SF, gross industrial
- > CAM: \$0.95/SF (est.)

3615-3617 N Kimball Drive

- > Available space: 4,980 SF
- > Office area: BTS
- > Loading:
 - > 2 drive-in doors (10' x 12')
- > Electrical: 200 amp/3-phase
- > Lease rate: \$5.50/SF, gross industrial
- > CAM: \$0.95/SF (est.)

3615 N Kimball Drive

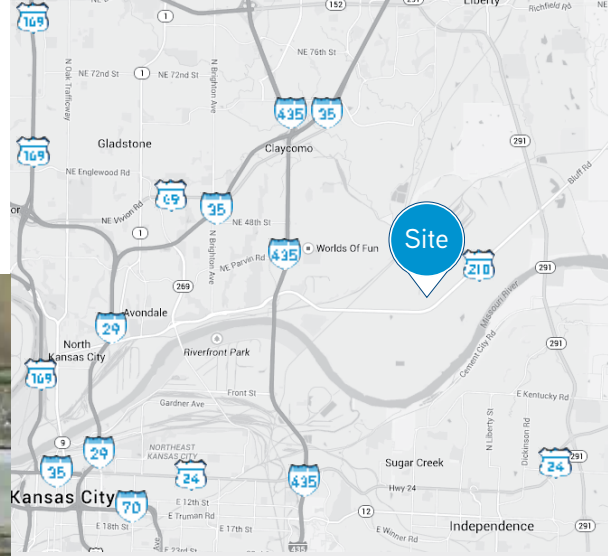
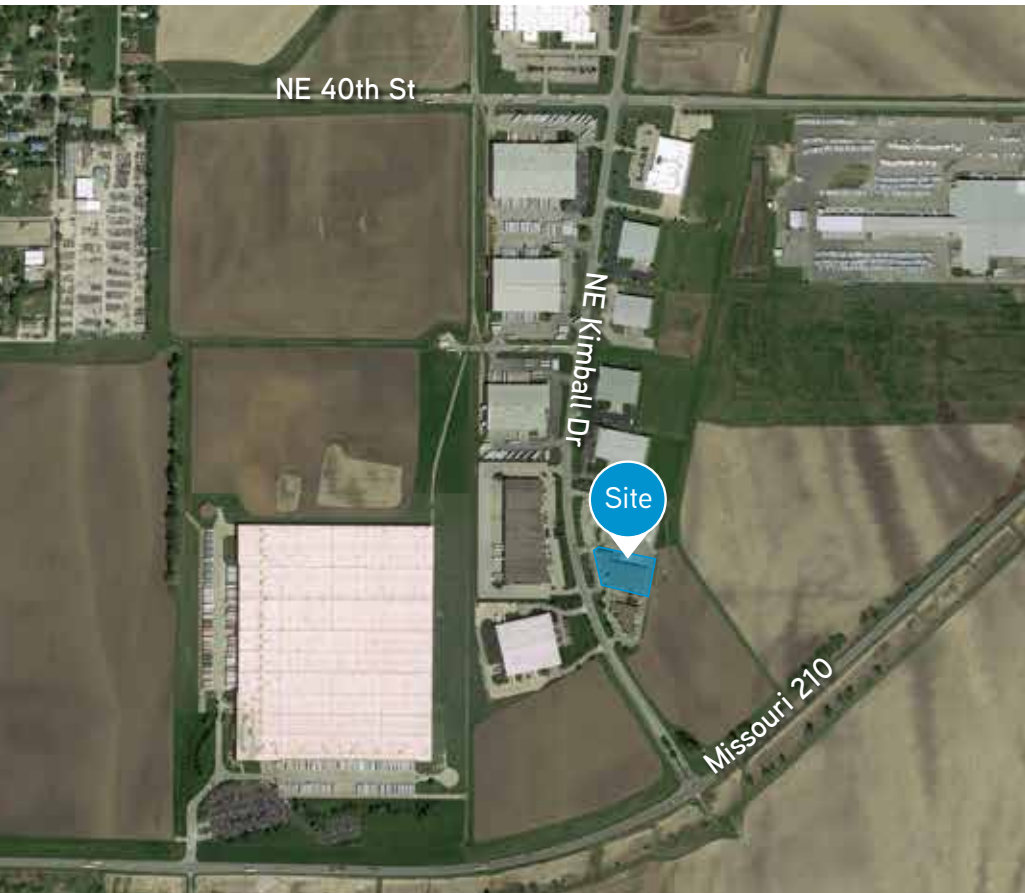
- > Available space: 2,410 SF
- > Office area: BTS
- > Loading:
 - > 1 drive-in door (10' x 12')
- > Electrical: 200 amp/3-phase
- > Lease rate: \$6.25/SF, gross industrial
- > CAM: \$0.95/SF (est.)

3617 N Kimball Drive

- > Available space: 2,570 SF
- > Office area: BTS
- > Loading:
 - > 1 drive-in door (10' x 12')
- > Electrical: 200 amp/3-phase
- > Lease rate: \$6.25/SF, gross industrial
- > CAM: \$0.95/SF (est.)

FOR LEASE > OFFICE / WAREHOUSE

3601-3617 N KIMBALL DRIVE



Contact Us

DOUG HEDRICK SIOB, CCIM

+1 816 556 1136

KANSAS CITY, MO

doug.hedrick@colliers.com

TOM KENNEDY

+1 816 556 1118

KANSAS CITY, MO

tom.kennedy@colliers.com

Please contact us to see this property

COLLIERS INTERNATIONAL
4520 Main Street, Suite 1000
Kansas City, MO 64111

www.colliers.com

This document has been prepared by Colliers International for advertising and general information only. Colliers International makes no guarantees, representations or warranties of any kind, expressed or implied, regarding the information including, but not limited to, warranties of content, accuracy and reliability. Any interested party should undertake their own inquiries as to the accuracy of the information. Colliers International excludes unequivocally all inferred or implied terms, conditions and warranties arising out of this document and excludes all liability for loss and damages arising there from. This publication is the copyrighted property of Colliers International and/or its licensor(s). ©2018. All rights reserved.

