

FOR LEASE > CLASS A OFFICE SPACE



# Everett Mall Office Park I

1010 SE EVERETT MALL WAY, EVERETT, WA 98208



## Available Space

- > Suite 100: 6,999 SF
- > Suite 101: 3,753 SF
- > Suite 102: 8,543 SF
- > Suite 203: 2,325 SF
- > Suite 204: 1,218 SF
- > Suite 206: 1,080 SF

## Features

- > Prime location with excellent access to I-5
- > Available immediately
- > 4.0 Parking stalls/1,000 SF
- > Class A build-out

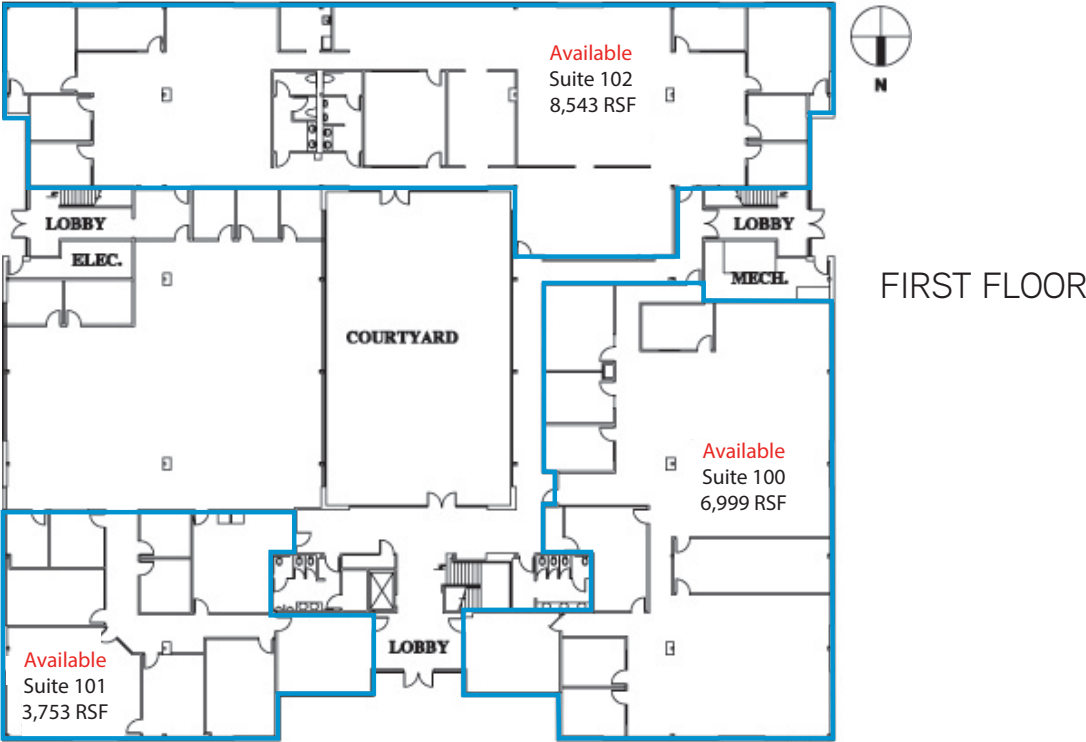
## Rate

- > \$15.00/SF, NNN

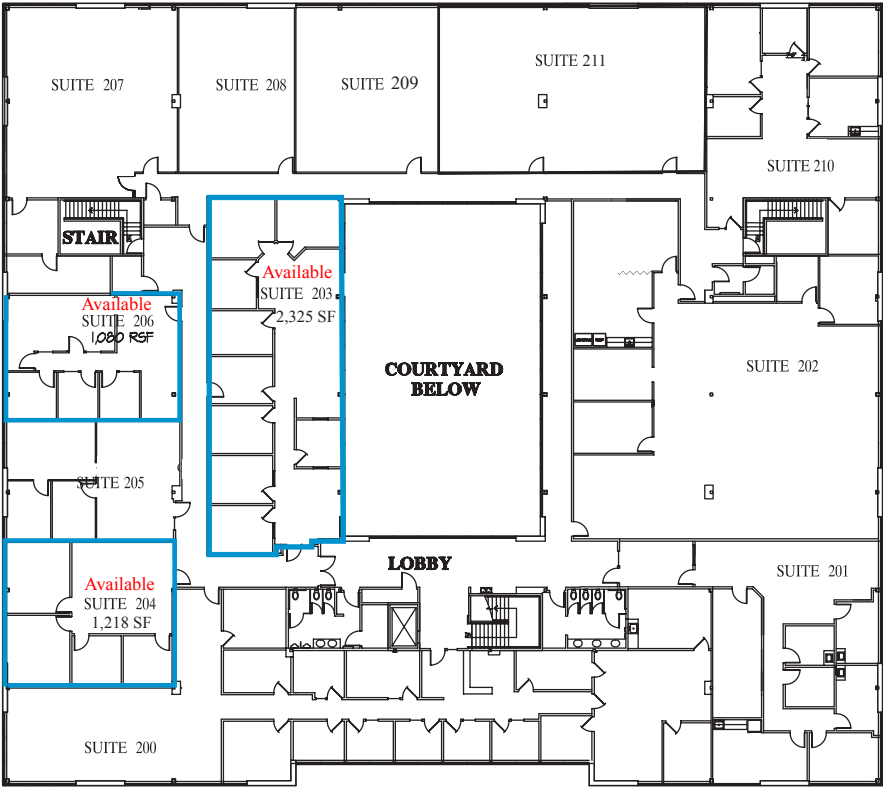
DEREK HEED  
425 453 3133  
BELLEVUE, WA  
derek.heed@colliers.com

COLLIERS INTERNATIONAL  
11225 SE 6th Street, Suite 240  
Bellevue, WA 98004  
www.colliers.com

Everett Mall Office Park I > Floor Plan



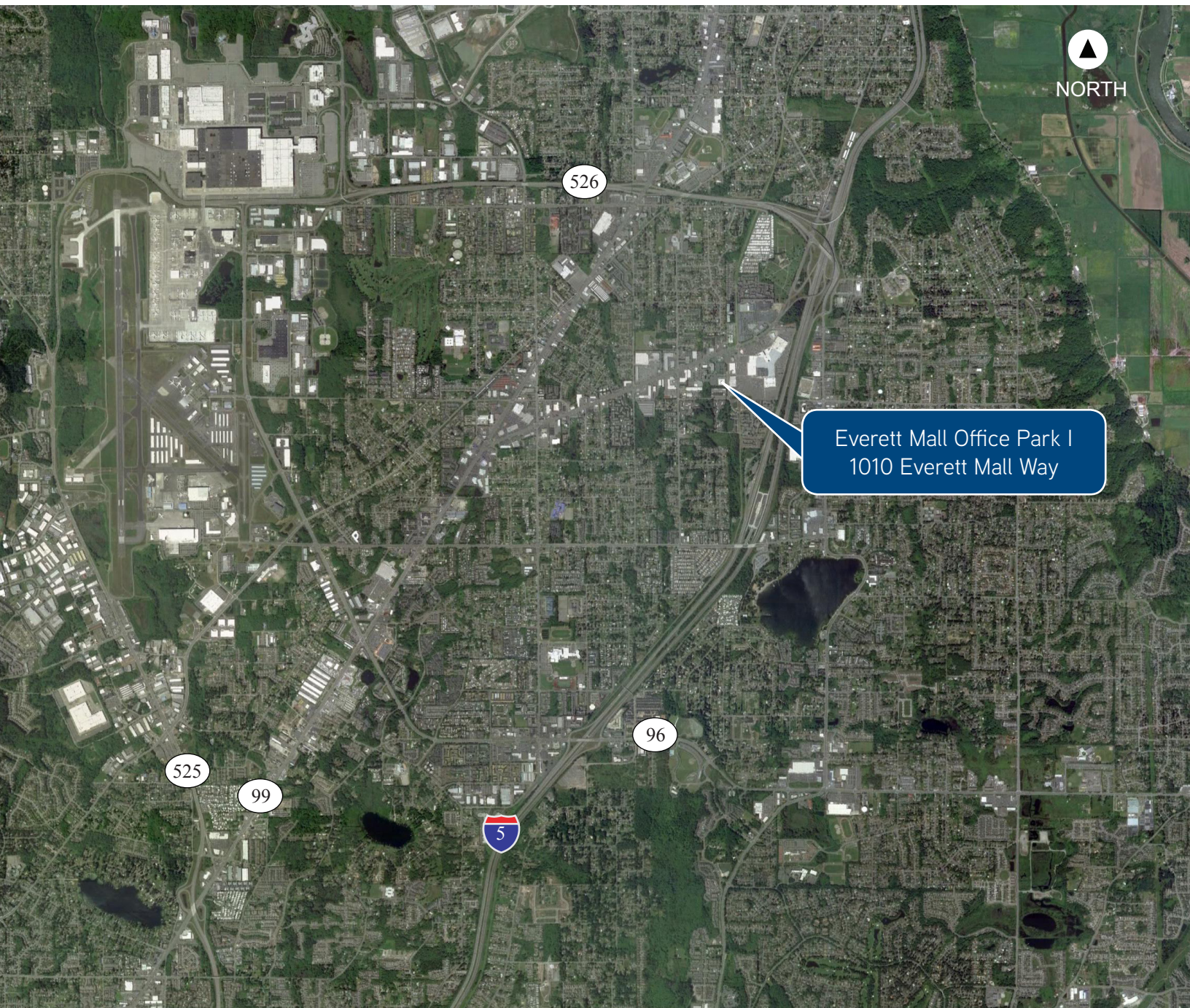
SECOND FLOOR





FOR LEASE > CLASS A OFFICE SPACE

## Everett Mall Office Park I > Location



DEREK HEED  
425 453 3133  
BELLEVUE, WA  
[derek.heed@colliers.com](mailto:derek.heed@colliers.com)

COLLIERS INTERNATIONAL  
11225 SE 6th Street, Suite 240  
Bellevue, WA 98004  
[www.colliers.com](http://www.colliers.com)

This document has been prepared by Colliers International for advertising and general information only. Colliers International makes no guarantees, representations or warranties of any kind, expressed or implied, regarding the information including, but not limited to, warranties of content, accuracy and reliability. Any interested party should undertake their own inquiries as to the accuracy of the information. Colliers International excludes unequivocally all inferred or implied terms, conditions and warranties arising out of this document and excludes all liability for loss and damages arising there from. This publication is the copyrighted property of Colliers International and /or its licensor(s). © 2018. All rights reserved.

