

FOR LEASE > OFFICE / RETAIL

SORRENTO PLAZA

11474 - 11516 E 15 MILE ROAD | STERLING HEIGHTS, MICHIGAN



NEWLY REMODELED CENTER

> PROPERTY HIGHLIGHTS

- 1,100 Square Foot Space Available
- At Lighted Intersection
- Excellent Parking, Signage, Access & Visibility on 15 Mile Road
- Co-Tenants Include: Boost Mobile, Papa John's & Lovely Nails

> DEMOGRAPHICS

	1 MILE	3 MILE	5 MILE
POPULATION	11,865	97,223	298,100
AVG. INCOME	\$70,309	\$71,943	\$67,633
HOUSEHOLDS	5,025	39,974	123,339

COLLIERS INTERNATIONAL

2 Corporate Drive | Suite 300
Southfield, Michigan 48076

For More Information Call:

BEN HUBERT

PHONE 248 540 1000 EXT 1864
EMAIL ben.hubert@colliers.com



BEN ROSENZWEIG

PHONE 248 540 1000 EXT 1866
EMAIL ben.rosenzweig@colliers.com



colliers.com/detroit



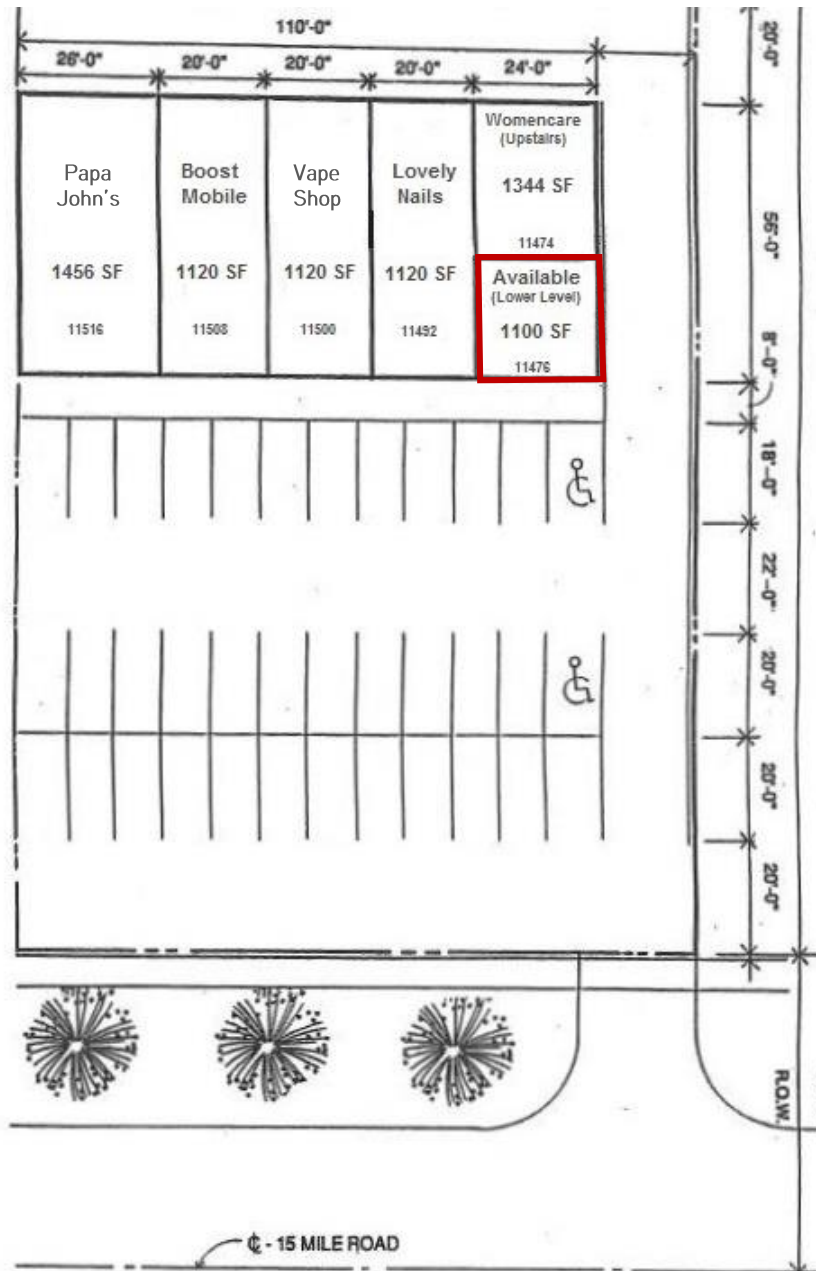
FOR LEASE > OFFICE / RETAIL

SORRENTO PLAZA

11474 - 11516 E 15 MILE ROAD | STERLING HEIGHTS, MICHIGAN



> SITE PLAN



BEN HUBERT

PHONE 248 540 1000 EXT 1864
EMAIL ben.hubert@colliers.com



BEN ROSENZWEIG

PHONE 248 540 1000 EXT 1866
EMAIL ben.rosenzweig@colliers.com

FOR LEASE > OFFICE / RETAIL

SORRENTO PLAZA

11474 - 11516 E 15 MILE ROAD | STERLING HEIGHTS, MICHIGAN



> BIRD'S EYE VIEW



BEN HUBERT

PHONE 248 540 1000 EXT 1864
EMAIL ben.hubert@colliers.com



BEN ROSENZWEIG

PHONE 248 540 1000 EXT 1866
EMAIL ben.rosenzweig@colliers.com

FOR LEASE > OFFICE / RETAIL

SORRENTO PLAZA

11474 - 11516 E 15 MILE ROAD | STERLING HEIGHTS, MICHIGAN



> LOCATION MAP



BEN HUBERT

PHONE 248 540 1000 EXT 1864
EMAIL ben.hubert@colliers.com



BEN ROSENZWEIG

PHONE 248 540 1000 EXT 1866
EMAIL ben.rosenzweig@colliers.com

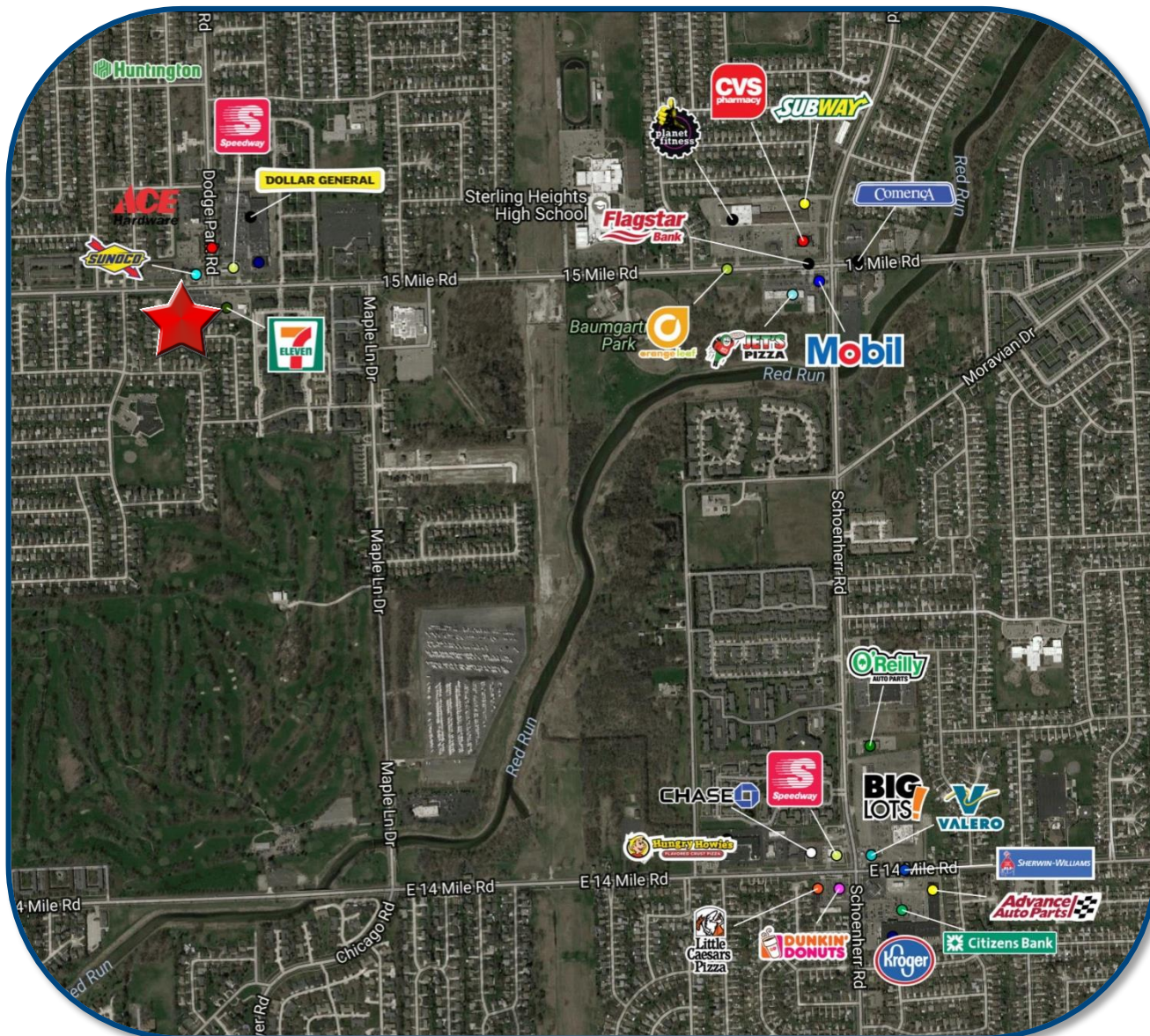
FOR LEASE > OFFICE / RETAIL

SORRENTO PLAZA

11474 - 11516 E 15 MILE ROAD | STERLING HEIGHTS, MICHIGAN



> AREA MERCHANT MAP



BEN HUBERT

PHONE 248 540 1000 EXT 1864

EMAIL ben.hubert@colliers.com



BEN ROSENZWEIG

PHONE 248 540 1000 EXT 1866

EMAIL ben.rosenzweig@colliers.com

SUMMARY PROFILE

2000-2010 Census, 2016 Estimates with 2021 Projections

Calculated using Weighted Block Centroid from Block Groups



Lat/Lon: 42.5512/-83.0105

RS1

11474-11516 E 15 Mile Rd

Sterling Heights, MI 48312

1 mi radius

3 mi radius

5 mi radius

POPULATION	2016 Estimated Population	11,865	97,223	298,100
	2021 Projected Population	12,030	99,021	304,026
	2010 Census Population	11,539	96,455	294,321
	2000 Census Population	12,070	97,137	294,269
	Projected Annual Growth 2016 to 2021	0.3%	0.4%	0.4%
	Historical Annual Growth 2000 to 2016	-0.1%	-	0.1%
	2016 Median Age	43.3	43.3	42.2
HOUSEHOLDS	2016 Estimated Households	5,025	39,974	123,339
	2021 Projected Households	5,211	41,568	128,444
	2010 Census Households	4,757	38,674	118,792
	2000 Census Households	4,932	38,610	117,325
	Projected Annual Growth 2016 to 2021	0.7%	0.8%	0.8%
	Historical Annual Growth 2000 to 2016	0.1%	0.2%	0.3%
RACE AND ETHNICITY	2016 Estimated White	78.4%	82.2%	80.8%
	2016 Estimated Black or African American	8.9%	9.4%	10.2%
	2016 Estimated Asian or Pacific Islander	9.7%	5.6%	6.0%
	2016 Estimated American Indian or Native Alaskan	0.2%	0.3%	0.2%
	2016 Estimated Other Races	2.8%	2.5%	2.8%
	2016 Estimated Hispanic	2.0%	2.1%	2.3%
INCOME	2016 Estimated Average Household Income	\$70,309	\$71,943	\$67,633
	2016 Estimated Median Household Income	\$59,186	\$61,294	\$56,915
	2016 Estimated Per Capita Income	\$29,827	\$29,649	\$28,032
EDUCATION (AGE 25+)	2016 Estimated Elementary (Grade Level 0 to 8)	6.6%	5.3%	5.1%
	2016 Estimated Some High School (Grade Level 9 to 11)	5.3%	6.2%	7.4%
	2016 Estimated High School Graduate	25.2%	30.1%	31.2%
	2016 Estimated Some College	22.3%	23.3%	23.1%
	2016 Estimated Associates Degree Only	11.0%	10.1%	10.1%
	2016 Estimated Bachelors Degree Only	18.3%	16.2%	15.1%
	2016 Estimated Graduate Degree	11.3%	8.8%	8.1%
BUSINESS	2016 Estimated Total Businesses	306	3,081	11,342
	2016 Estimated Total Employees	3,449	54,155	154,084
	2016 Estimated Employee Population per Business	11.3	17.6	13.6
	2016 Estimated Residential Population per Business	38.8	31.6	26.3

This report was produced using data from private and government sources deemed to be reliable. The information herein is provided without representation or warranty.