

FOR LEASE > RETAIL SPACE



Glades Plaza

525-545 SW 16TH STREET, BELLE GLADE, FL



Highly Visible Neighborhood Shopping Center

- > ±26,100 SF available with a ±14,000 SF end-cap unit
- > Established community center
- > Located at busy signalized intersection
- > Across the street from Palm Beach State College campus
- > Central “in-town” location within 1/4 mile of Glades Central High School
- > Situated on State Road 715, the main commercial north/south thoroughfare through Belle Glade
- > Adjacent to new residential development
- > Outparcel development potential
- > Abundant parking with excellent access to major roads
- > Prominent pylon signage is available
- > Asking Lease Rate: \$8.00 - 10.00 PSF NNN

Contact Us

HONEY BRYAN
SENIOR VICE PRESIDENT
561 308 8266
honey.bryan@colliers.com

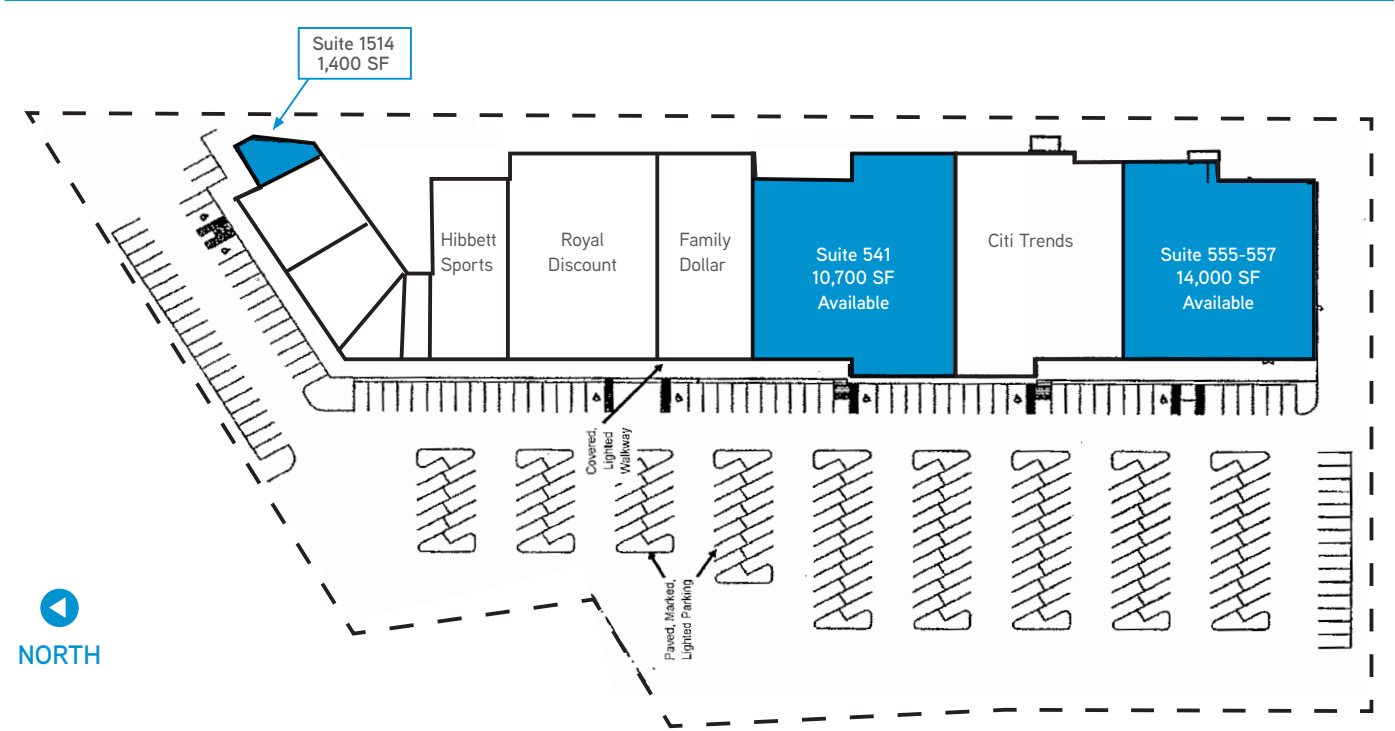
Information contained herein has been obtained from the owners or from other sources deemed reliable. We have no reason to doubt its accuracy, but we regret we can not guarantee it. All properties subject to change or withdrawal without notice.

COLLIERS INTERNATIONAL
SOUTH FLORIDA, LLC
4500 PGA Boulevard, Suite 110
Palm Beach Gardens, FL 33418
www.colliers.com/southflorida

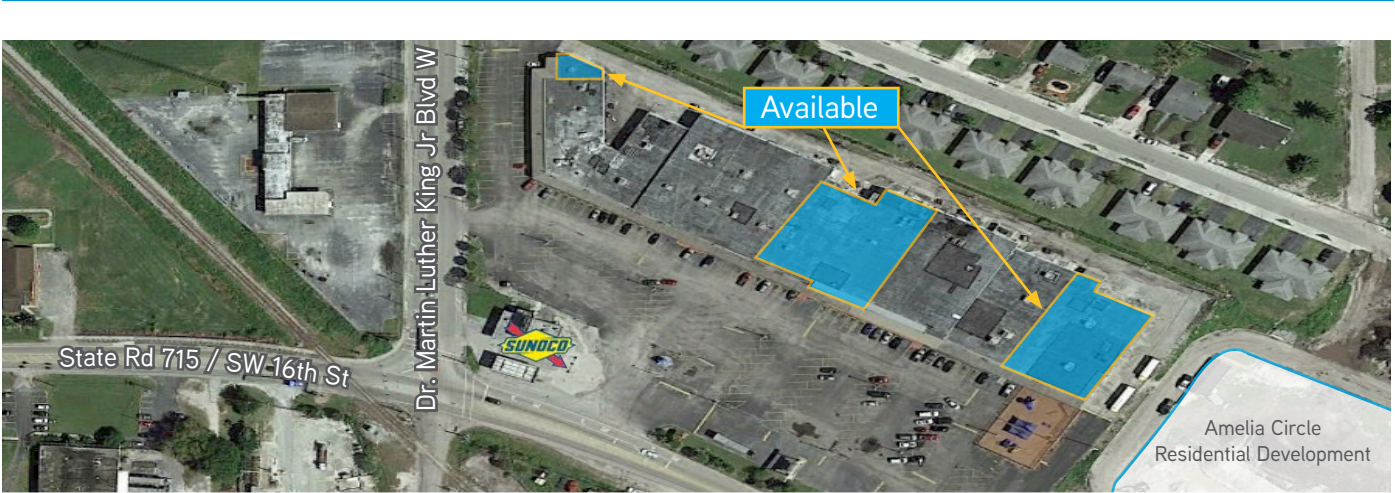
Glades Plaza > Availability

SUITE	RSF	RATE/RSF/YR	COMMENTS
1514	1,400 SF	\$8.00 PSF Base NNN	
541	10,700 SF	\$10.00 PSF Base NNN	
555-557	14,000 SF	\$8.00 - 10.00 PSF Base NNN	Former charter school tenant

Site Plan



Site Aerial



Glades Plaza > Property Photos



NORTH FACING VIEW



SOUTH FACING VIEW



VISIBLE SIGNAGE



NATIONAL TENANTS



END-CAP VIEW



ADJACENT RESIDENTIAL DEVELOPMENT

Glades Plaza > Area Overview



Demographic Summary

Population	3 Mile	5 Mile	10 Mile
2022 Projection	28,382	29,273	36,406
2017 Estimate	26,740	27,583	34,209
2010 Census	25,510	26,340	32,181
Household Income			
2017 Average Income	\$42,343	\$42,483	\$42,409
2017 Median Income	\$32,218	\$32,185	\$31,240
Households			
2022 Projection	8,110	8,383	10,698
2017 Estimate	7,616	7,874	10,021
2010 Census	7,153	7,407	9,266