

FOR  
LEASE

# Building 15

9700-9746 SW Nimbus Avenue | Beaverton, OR



NIMBUS CORPORATE CENTER



\$18.00/SF  
NNN

## AVAILABLE SUITES:

Suite 9734/9740 - 6,750 SF

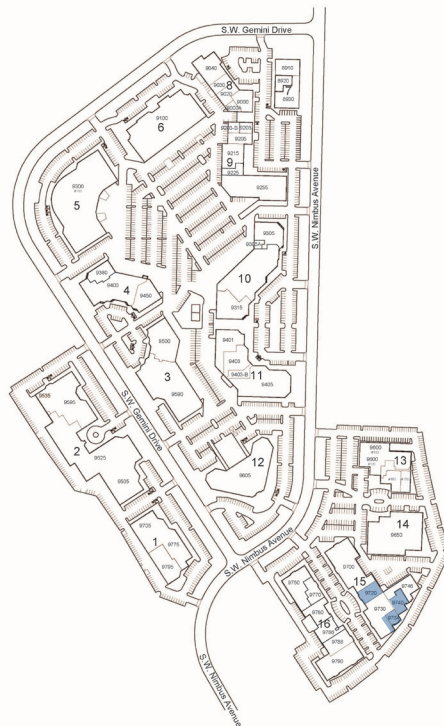
(Divisible to 2,895 SF)

Suite 9720 - 4,113 SF

- Building visible from Scholls Ferry Road
- Advanced telecommunications infrastructure with fiber available
- Multiple private offices
- 4/1,000 parking
- End cap location
- Exterior building signage

Tenant improvements available for new leases

Floor plans on back



For more information, contact:

JOHN MEDAK | 503-542-5898 | [john.medak@colliers.com](mailto:john.medak@colliers.com)

JENNIFER MEDAK | 503-542-5899 | [jennifer.medak@colliers.com](mailto:jennifer.medak@colliers.com)

[www.nimbuscorporateshorenstein.com](http://www.nimbuscorporateshorenstein.com)



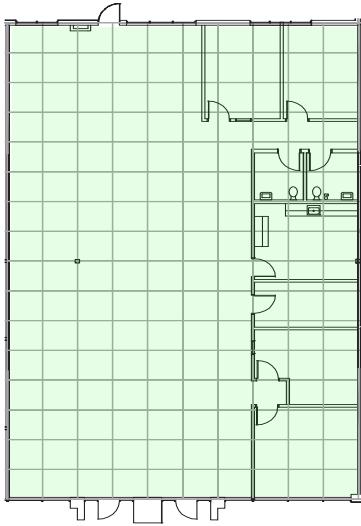
[www.shorenstein.com](http://www.shorenstein.com)



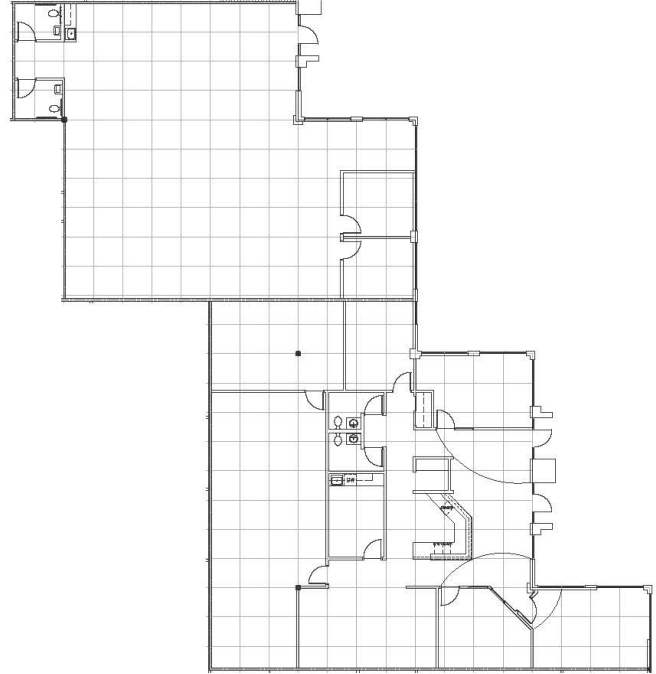
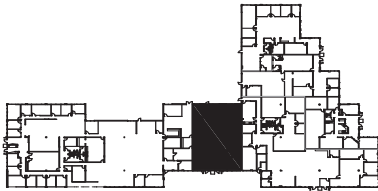
FOR  
LEASE

# Building 15

9700-9746 SW Nimbus Avenue | Beaverton, OR

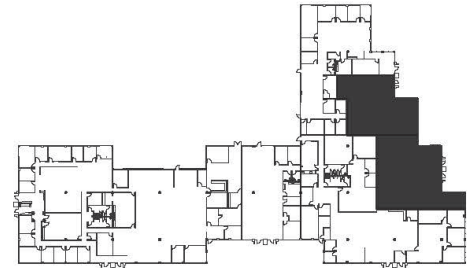


Suite 9720  
Approx. 4,113 SF



Suite 9734 & 9740  
Approx. 6,750 SF

(Divisible to 2,895 SF)



For more information, contact:

JOHN MEDAK | 503-542-5898 | [john.medak@colliers.com](mailto:john.medak@colliers.com)

JENNIFER MEDAK | 503-542-5899 | [jennifer.medak@colliers.com](mailto:jennifer.medak@colliers.com)

