

FOR
LEASE

Building 15

9700-9746 SW Nimbus Avenue | Beaverton, OR



NIMBUS CORPORATE CENTER



\$17.00/SF
NNN

AVAILABLE SUITES:

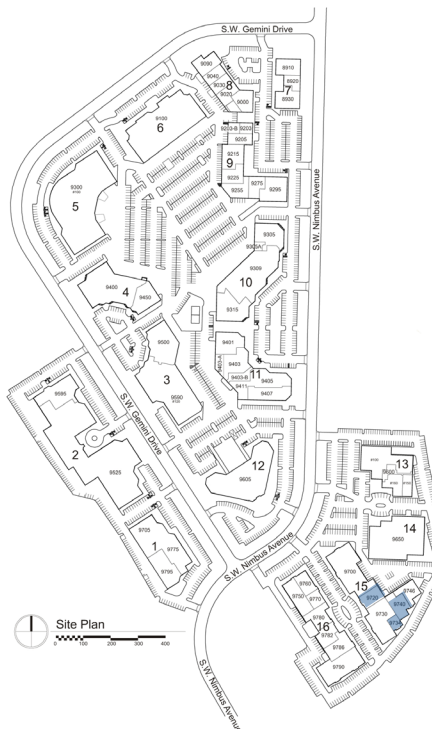
Suite 9734/9740 - 6,750 SF
(Divisible to 2,895 SF)

- Building visible from Scholls Ferry Road
- Multiple private offices
- 4/1,000 parking
- End cap location
- Exterior building signage

Suite 9720 - 4,113 SF

Tenant improvements available for new leases

Floor plans on back



For more information, contact:

JOHN MEDAK | 503-542-5898 | john.medak@colliers.com

JENNIFER MEDAK | 503-542-5899 | jennifer.medak@colliers.com

www.nimbuscorporateshorenstein.com

SHORENSTEIN



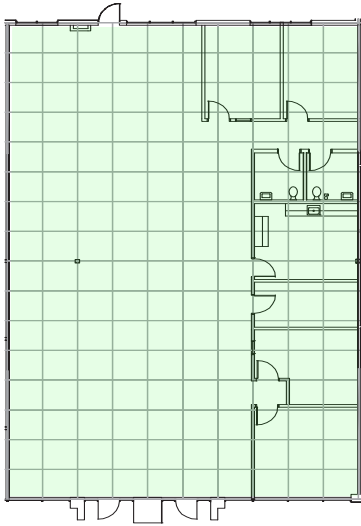
www.shorenstein.com



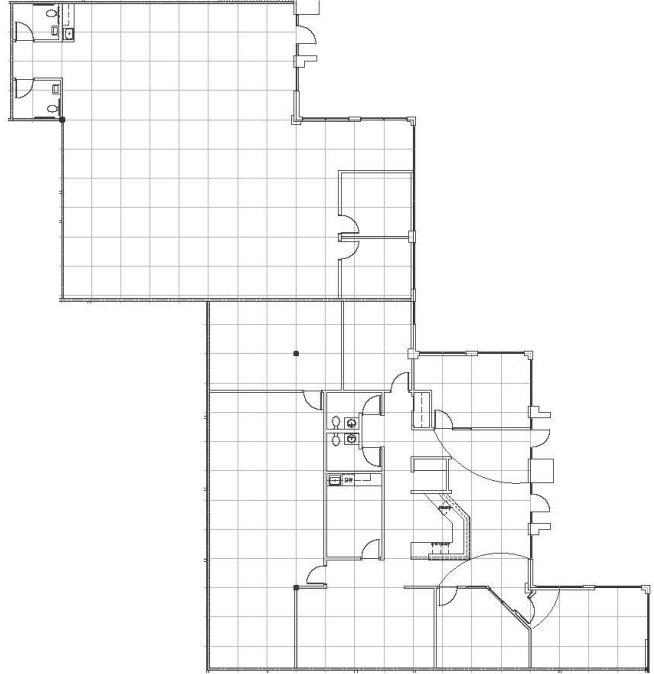
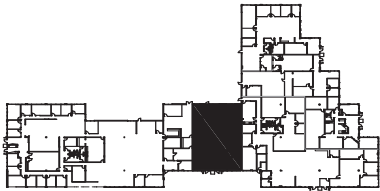
FOR
LEASE

Building 15

9700-9746 SW Nimbus Avenue | Beaverton, OR

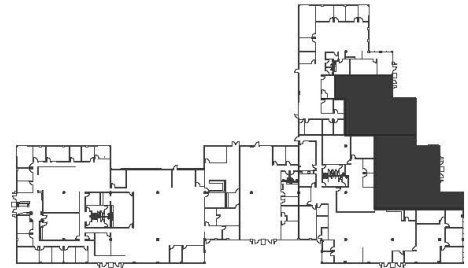


Suite 9720
Approx. 4,113 SF



Suite 9734 & 9740
Approx. 6,750 SF

(Divisible to 2,895 SF)



For more information, contact:

JOHN MEDAK | 503-542-5898 | john.medak@colliers.com

JENNIFER MEDAK | 503-542-5899 | jennifer.medak@colliers.com

