

FOR
LEASE

Building 15

9700-9746 SW Nimbus Avenue | Beaverton, OR



NIMBUS CORPORATE CENTER



\$16.00/SF
NNN

AVAILABLE SUITES:

Suite 9734 - 3,855 SF
(Available June 1, 2018)

Suite 9720 - 4,113 SF

Suite 9740 - 2,895 SF

- Building visible from Scholls Ferry Road
- Multiple private offices
- 4/1,000 parking
- End cap location
- Exterior building signage

Tenant improvements available for new leases

Floor plan on back



For more information, contact:

JOHN MEDAK | 503-542-5898 | john.medak@colliers.com

JENNIFER MEDAK | 503-542-5899 | jennifer.medak@colliers.com

www.nimbuscorporateshorenstein.com



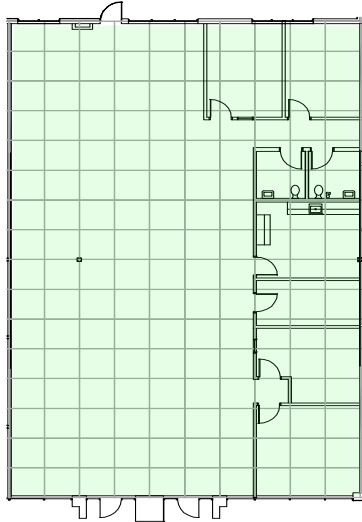
www.shorenstein.com



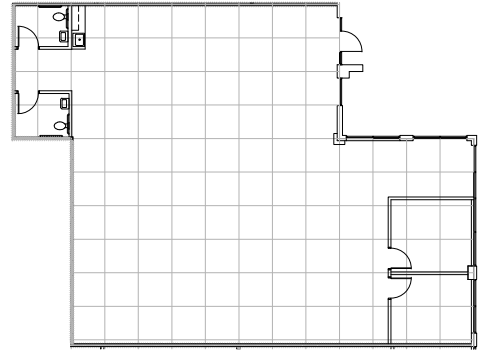
FOR
LEASE

Building 15

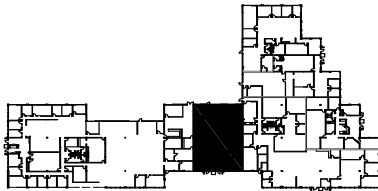
9700-9746 SW Nimbus Avenue | Beaverton, OR



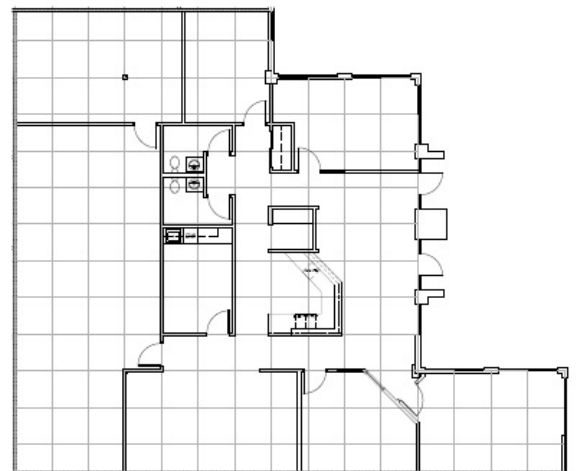
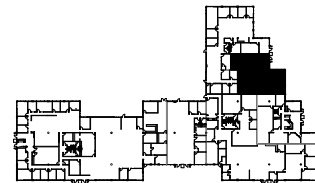
Suite 9720
Approx. 4,113 SF



Suite 9740
Approx. 2,895 SF



Suite 9734
Approx. 3,855 SF
(Available June 1, 2018)



For more information, contact:

JOHN MEDAK | 503-542-5898 | john.medak@colliers.com

JENNIFER MEDAK | 503-542-5899 | jennifer.medak@colliers.com

