

FOR LEASE > CORNER UNIT DISTRIBUTION SPACE WITH YARD & RAIL



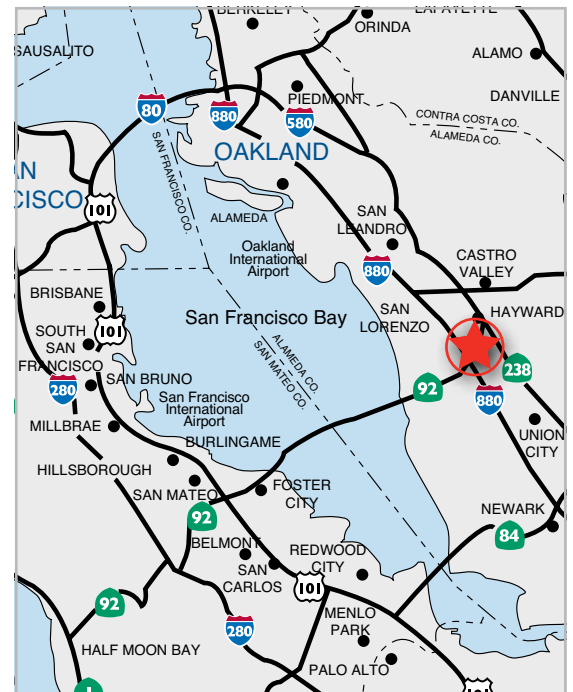
20458 Corsair Boulevard

HAYWARD, CA



Property Features

- > Size: ±30,321 SF End/Corner Unit
- > Office Area: ±1,360 Sq. Ft.
- > Doors: 6 Dock High (3 double docks) & 2 Grade-Level
- > Sprinklered
- > Clear Height: ±24'
- > UP Rail (2 doors, need to activate spur)
- > Concrete tilt-up construction
- > Side yard area, fenced & paved
- > Ample Power
- > Column Spacing: 22' x 74' & 22' x 80', middle bay
- > Lease rate: \$.85/sq. ft., triple net.



ROBERT "CHET" BARNEY

Senior Vice President
+1 510 433 5811
chet.barney@colliers.com
CA Lic. No. 01111364

JOE YAMIN

Senior Vice President
+1 510 433 5812
joe.yamin@colliers.com
CA Lic. No. 01327666

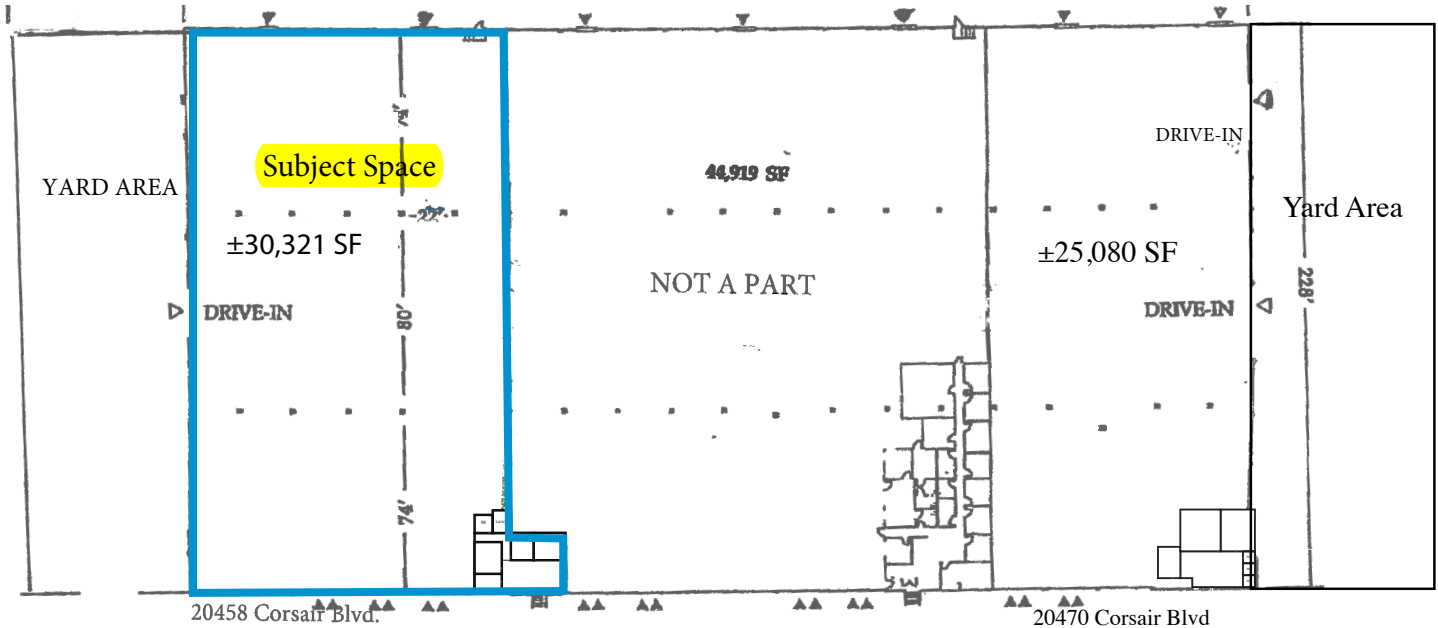
COLLIERS INTERNATIONAL

1999 Harrison Street, Suite 1750
Oakland, CA 94612
www.colliers.com/oakland

20458 Corsair Boulevard

HAYWARD, CA

FLOOR PLAN



*NOTE: MEASUREMENTS ARE APPROXIMATE / NOT TO SCALE

▲ DOCK HIGH LOADING
▲ DRIVE-IN DOORS
▲ RAIL DOORS

