

FIRST NANDINA LOGISTICS CENTER FOR LEASE - 1,387,899 SF

DEVELOPED BY ::
FIRST
INDUSTRIAL
REALTY • TRUST



24385 NANDINA AVE, MORENO VALLEY, CA 92551

PROPERTY FEATURES:

- » Cross-Dock Configuration
- » 40' Warehouse Clearance
- » 224 Dock High Doors (9'x10')
- » 653 Trailer Stalls
- » 9,987 SF of Office Space
- » ESFR Sprinkler System with K25.2 Heads
- » 6000 Amps Service Expandable to 8000 Amps
- » 352' and 240' Concrete Truck Courts
- » 8" Warehouse Slab
- » LED Warehouse Lighting
- » 4 Ground Level Loading Doors (12'x14')
- » 406 Auto Parking Spaces
- » Truck Yard Guard Shack
- » LEED Certified Building
- » 56'x60' Typical Column Spacing
- » Corporate Neighbors Include: Amazon, P&G, Walgreens, O'Reilly Auto Parts, Harbor Freight Tools, Home Depot, Ross Dress For Less

PROPERTY LOCATION:



WWW.FIRSTNANDINALOGISTICSCENTER.COM

KEVIN MCKENNA, SIOR

License No. 00887289

909 937 6342

Kevin.McKenna@colliers.com

SCOTT SANDERS, SIOR

License No. 01481466

909 937 6322

Scott.Sanders@colliers.com

COLLIERS INTERNATIONAL

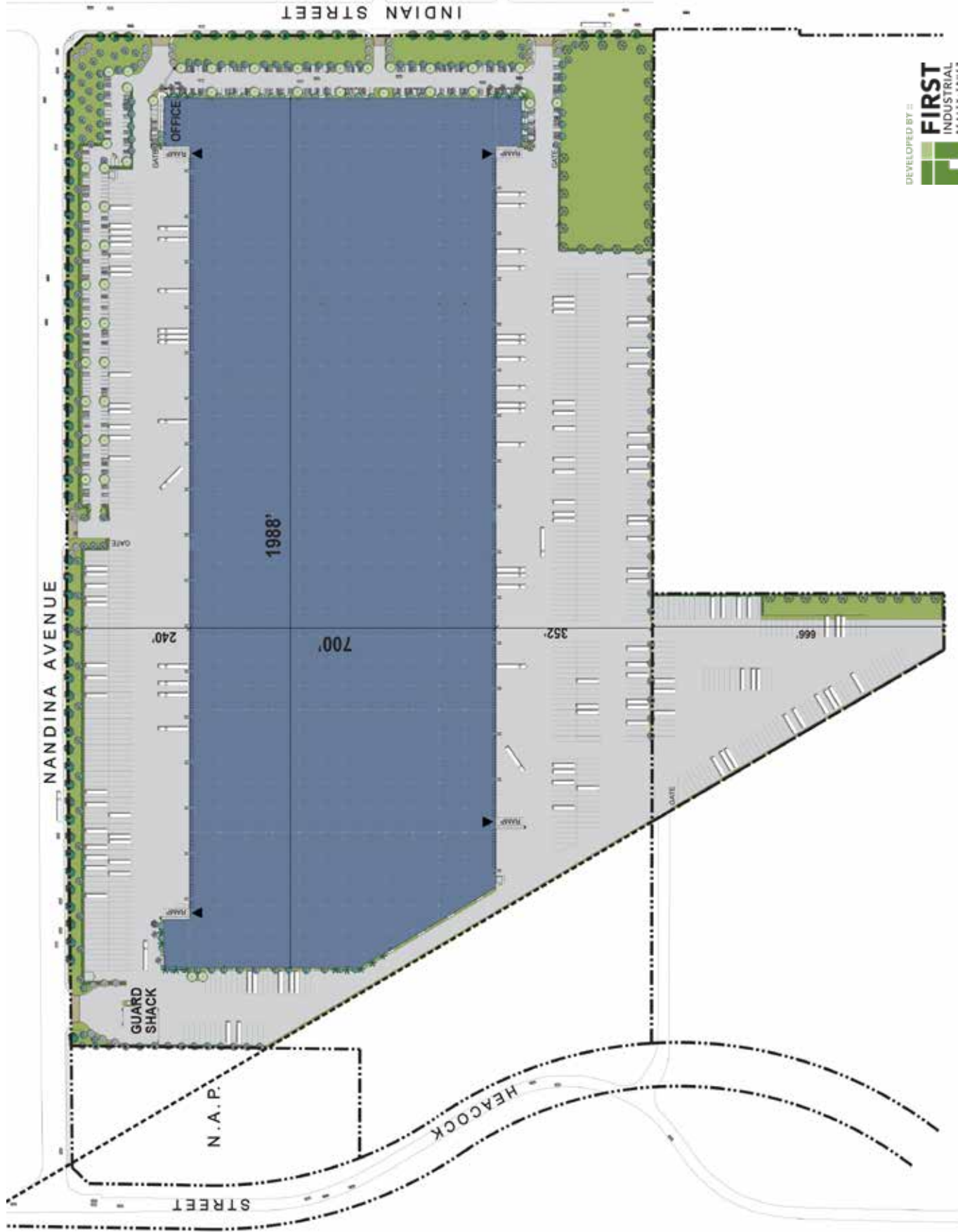
2855 E. Guasti Rd., Suite 401

Ontario, California 91761

www.colliers.com



FOR LEASE - FIRST NANDINA LOGISTICS CENTER



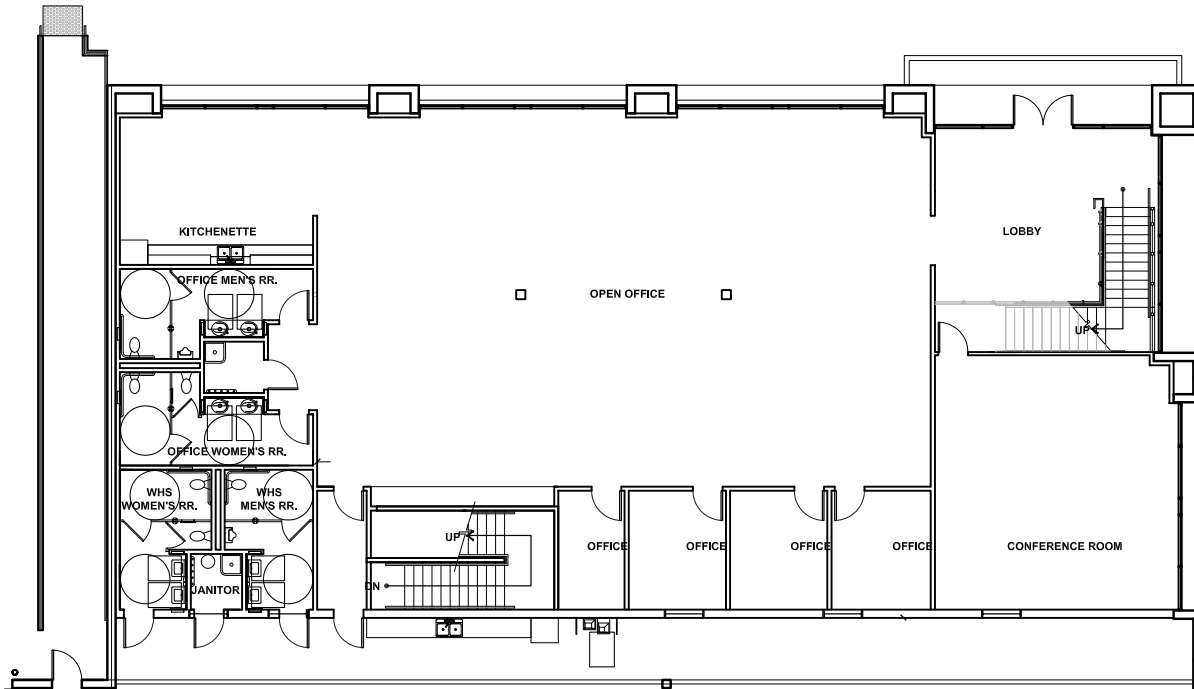
DEVELOPED BY
FIRST INDUSTRIAL
REALTY

Colliers International makes no guarantees, representations or warranties of any kind, expressed or implied, regarding the information including, but not limited to, warranties of content, accuracy and reliability. This publication is the copyrighted property of Colliers International and/or its licensor(s). 2017. All rights reserved.



FIRST NANDINA LOGISTICS CENTER FOR LEASE - 1,387,899 SF

1ST FLOOR 5,298 SF



2ND FLOOR 4,689 SF

