

FOR SALE > LAND \$10.50-13.00/SF

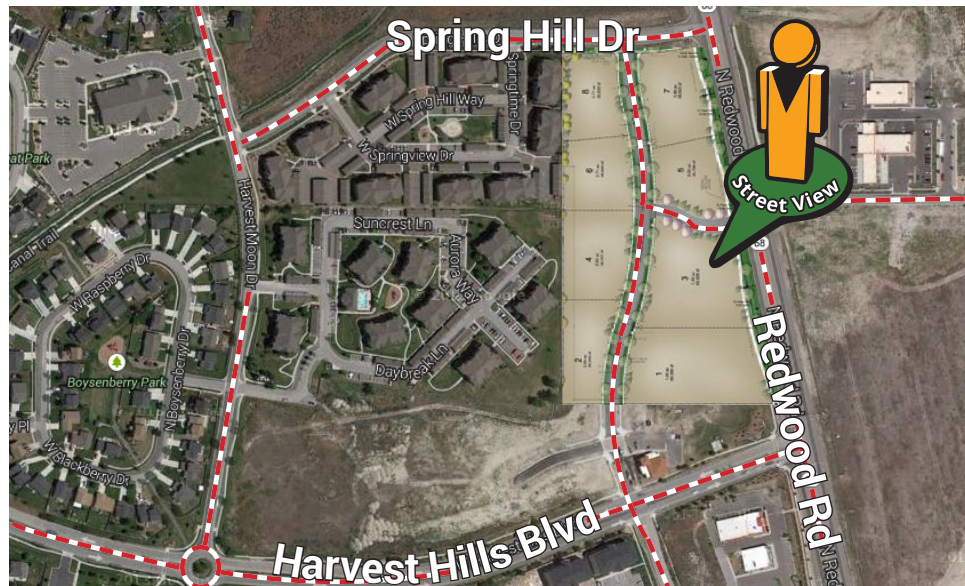
Harvest Point Commercial

2160 N REDWOOD ROAD SARATOGA SPRINGS, UTAH



Property Information

- > New Development
- > Redwood Road Frontage/Visibility
- > Near The New NSA Facility
- > Easy Access to I-15 Via The Mountain View Corridor
- > Build To Suit Options - Office And/or Retail



James Yeates
+1 801 702 4687
james.yeates@colliers.com

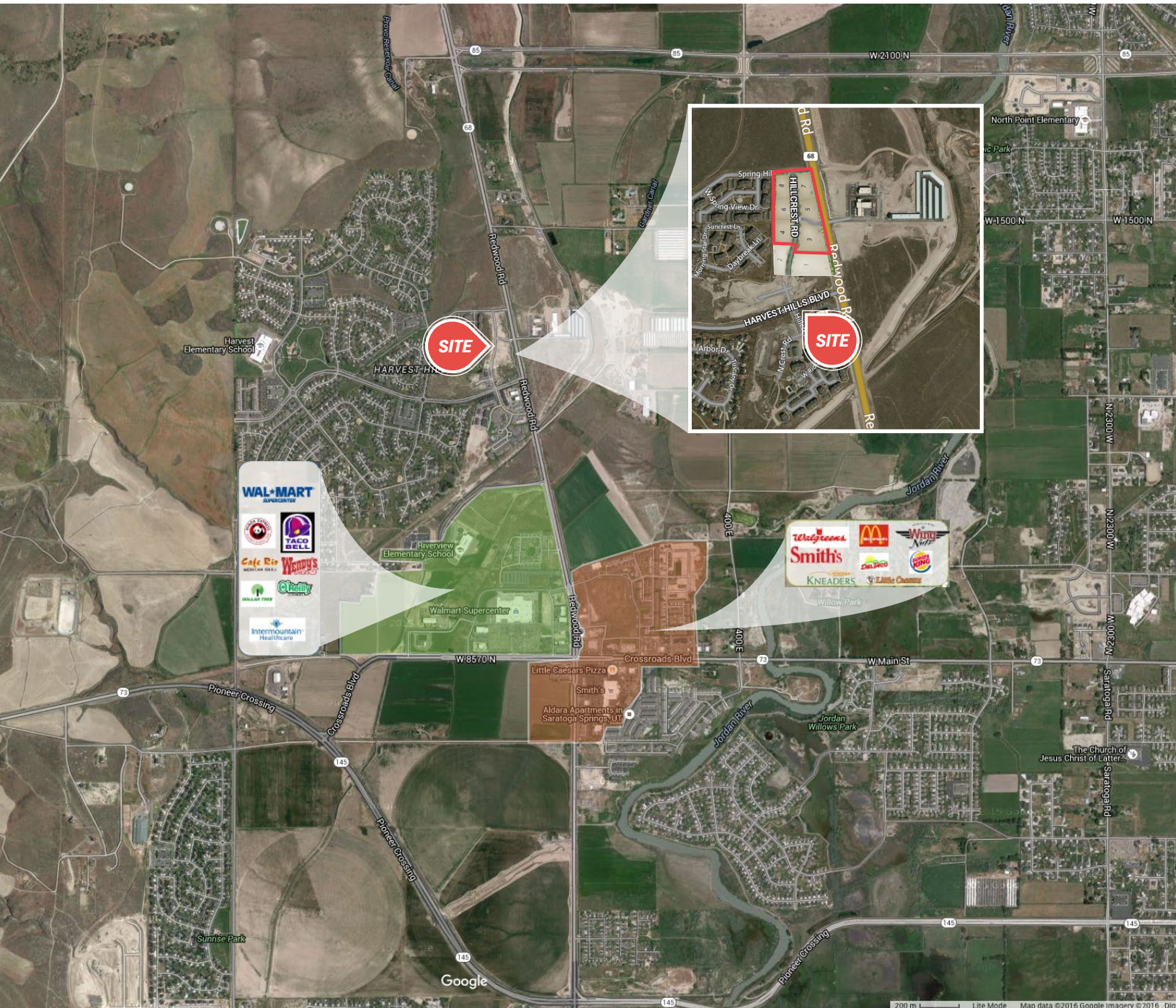
Justin Irvine
+1 801 702 4686
justin.irvine@colliers.com

Colliers International
2100 Pleasant Grove Blvd. | Suite 200
Pleasant Grove, UT 84062
P: +1 801 610 1300

FOR SALE > LAND \$10.50-13.00/SF

Harvest Point Commercial

2160 N REDWOOD ROAD SARATOGA SPRINGS, UTAH



This document has been prepared by Colliers International for advertising and general information only. Colliers International makes no guarantees, representations or warranties of any kind, expressed or implied, regarding the information including, but not limited to, warranties of content, accuracy and reliability. Any interested party should undertake their own inquiries as to the accuracy of the information. Colliers International excludes unequivocally all inferred or implied terms, conditions and warranties arising out of this document and excludes all liability for loss and damages arising there from. This publication is the copyrighted property of Colliers International and/or its licensor(s). ©2017. All rights reserved.

Colliers International
2100 Pleasant Grove Blvd. | Suite 200
Pleasant Grove, UT 84062
P: +1 801 610 1300

