

FOR SALE > RETAIL/MEDICAL SITE

±1.67 Acres off of I-26

KINLEY ROAD AND LAKE MURRAY BOULEVARD, IRMO, SC 29063



## Property Description

The subject property is located off of exit 102B on I-26 and consists of ±1.67 acres at Kinley Road and Lake Murray Boulevard. Across from Palmetto Health Baptist Parkridge with 76 beds and 600 team members, the site would be ideal for any restaurant or medical user.

## Property Details

- > **Site:** ±1.67 acres
- > **Zoning:** PUD-C
- > **Sales Price:** \$750,000

### DEMOGRAPHICS - 2017 ESTIMATE

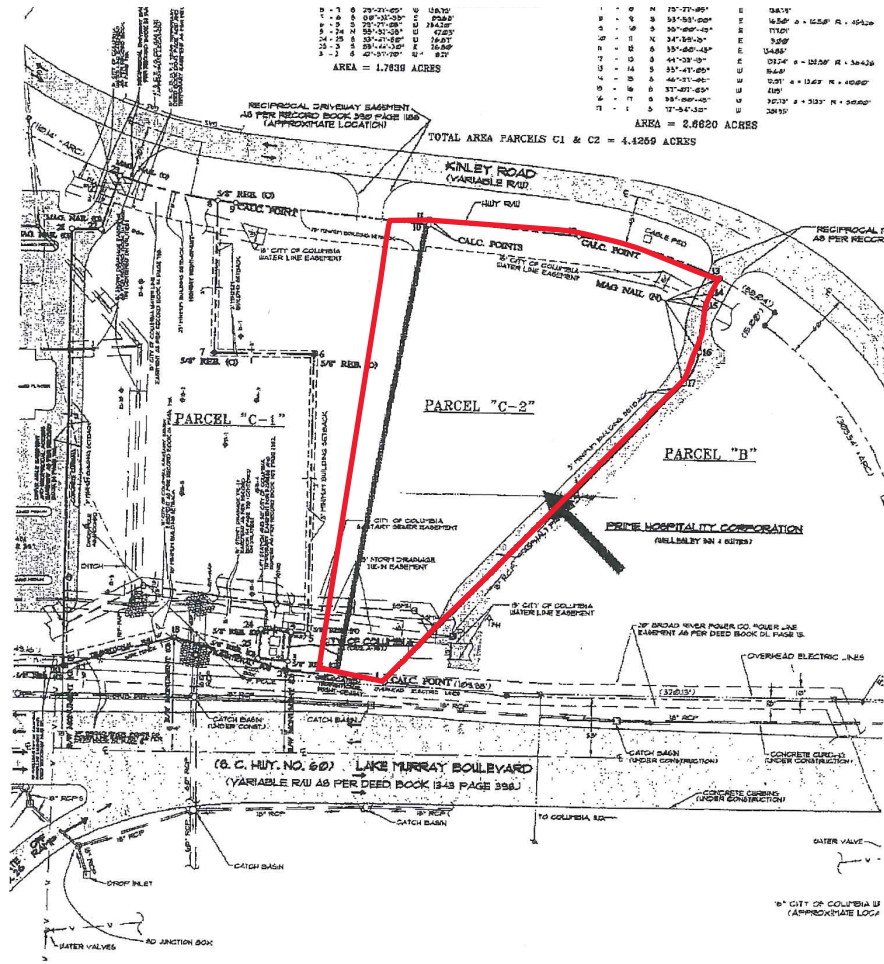
	1 Mile	3 Miles	5 Miles
Population:	5,773	47,766	92,445
Households:	2,543	19,101	35,252
Avg. Household Income:	\$78,648	\$80,899	\$79,318

TRIPP BRADLEY, CCIM  
803 401 4257 DIRECT  
tripp.bradley@colliers.com

MARY WINTER TEASTER  
803 401 4308 DIRECT  
mary.teaster@colliers.com

COLLIERS INTERNATIONAL  
1301 Gervais Street, Suite 600  
Columbia, South Carolina 29201  
www.colliers.com





TRIPP BRADLEY, CCIM  
803 401 4257 DIRECT  
[tripp.bradley@colliers.com](mailto:tripp.bradley@colliers.com)

MARY WINTER TEASTER  
803 401 4308 DIRECT  
[mary.teaster@colliers.com](mailto:mary.teaster@colliers.com)

This document has been prepared by Colliers International for advertising and general information only. Colliers International makes no guarantees, representations or warranties of any kind, expressed or implied, regarding the information including, but not limited to, warranties of content, accuracy and reliability. Any interested party should undertake their own inquiries as to the accuracy of the information. Colliers International excludes unequivocally all inferred or implied terms, conditions and warranties arising out of this document and excludes all liability for loss and damages arising there from. This publication is the copyrighted property of Colliers International and/or its licensor(s). ©2014. All rights reserved.

