

# 16E40

*Bryant Park*



**PRICE  
REDUCTION**

**CONTACT FOR FURTHER DETAILS**



# 16E40

*Bryant Park*

VISIT WEBSITE →

7,500 SF  
FLOOR 6

7,500 SF  
FLOOR 11

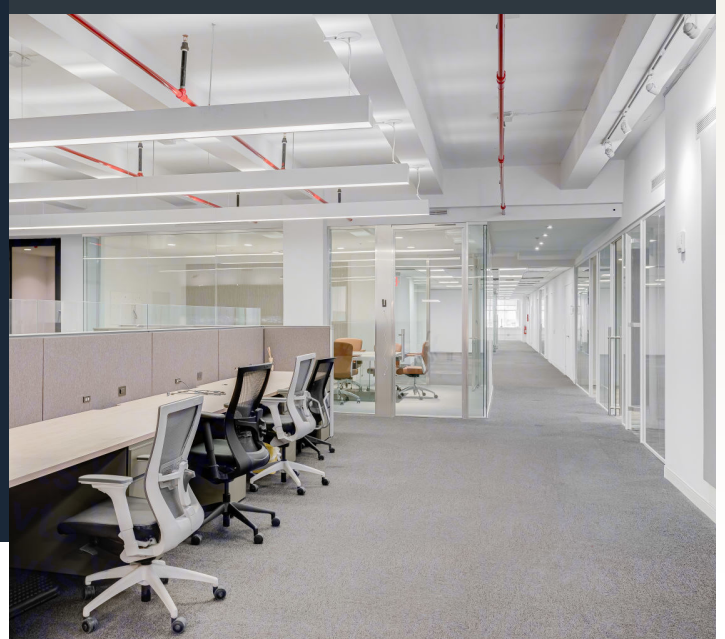
7,500 SF  
FLOOR 12

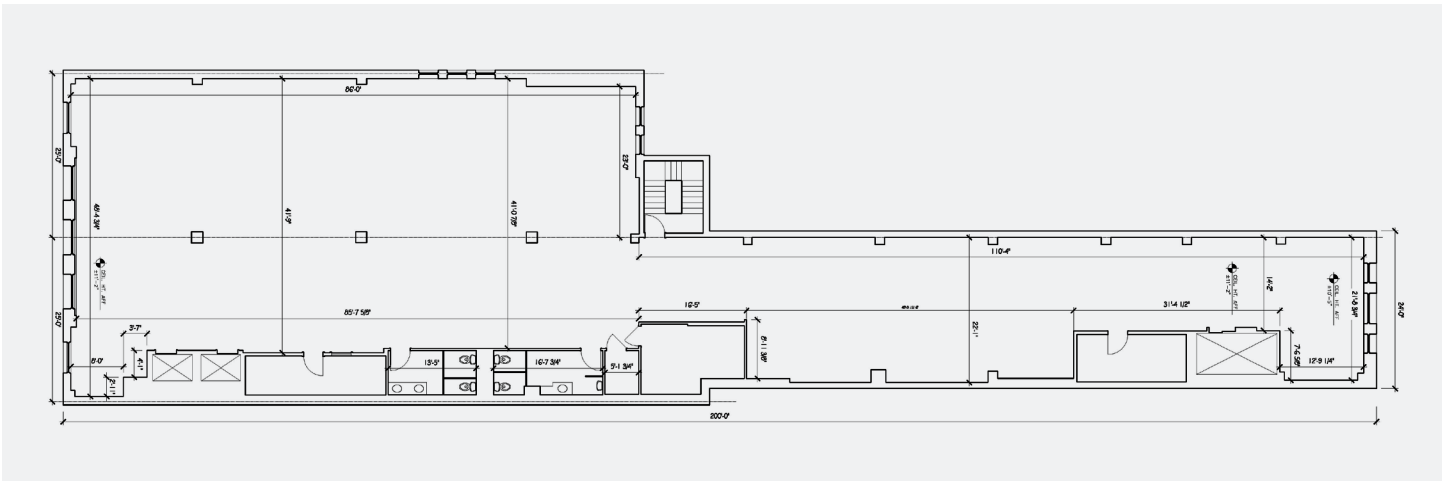
2,500 SF  
PENTHOUSE

- BRAND NEW LOBBY & ELEVATORS
- ADDITIONAL ELEVATOR WITH POTENTIAL EXCLUSIVE ACCESS TO 12TH FLOOR & PENTHOUSE
- MINIMAL COLUMNS & HIGH CEILINGS
- PRIVATE ROOFTOP ACCESS



MAIN LOBBY





# CLOSE PROXIMITY TO GRAND CENTRAL, BRYANT PARK & TRANSIT.

3 MINUTES  
TO BRYANT PARK

5 MINUTES  
TO GRAND CENTRAL

15 MINUTES  
TO PENN STATION

15 MINUTES  
TO PORT AUTHORITY



# 16E40

*Bryant Park*

VISIT WEBSITE →

**DREW SILVESTER**

VICE PRESIDENT

212-716-3652

[DREW.SILVESTER@COLLIERS.COM](mailto:DREW.SILVESTER@COLLIERS.COM)

**ROBERT GALLUCCI**

EXECUTIVE VICE PRESIDENT

212-716-3621

[ROBERT.GALLUCCI@COLLIERS.COM](mailto:ROBERT.GALLUCCI@COLLIERS.COM)



**COLLIERS INTERNATIONAL NY, LLC**  
GRACE BUILDING | 1114 6TH AVENUE  
NEW YORK, NY

No representation is made as to the accuracy of the information furnished herein and same is submitted subject to errors, omissions, change of prices, rental, or other conditions, prior sale, lease, sublease, and/or withdrawal without notice. While every attempt is made to ensure accuracy, the floor plan(s) is for guidance only. The measurements, dimensions, specifications, and other data shown are approximate and may not be to scale. We assume no responsibility for the accuracy of the floor plan(s) or for any action taken in reliance thereon. The floor plan(s) do not create any representation, warranty or contract. All parties should consult a professional, such as an architect, to verify the information contained herein. The furnishing of this information shall not be deemed a hiring. A commission in accordance with our principal's schedule of rates and conditions will be paid to the procuring Broker who executes our or our principal's brokerage agreement, subject to a fully consummated transaction upon terms and conditions acceptable to our principal. Colliers International NY, LLC

Drew Silvester and Robert Gallucci are "Licensed Real Estate Salespersons".