

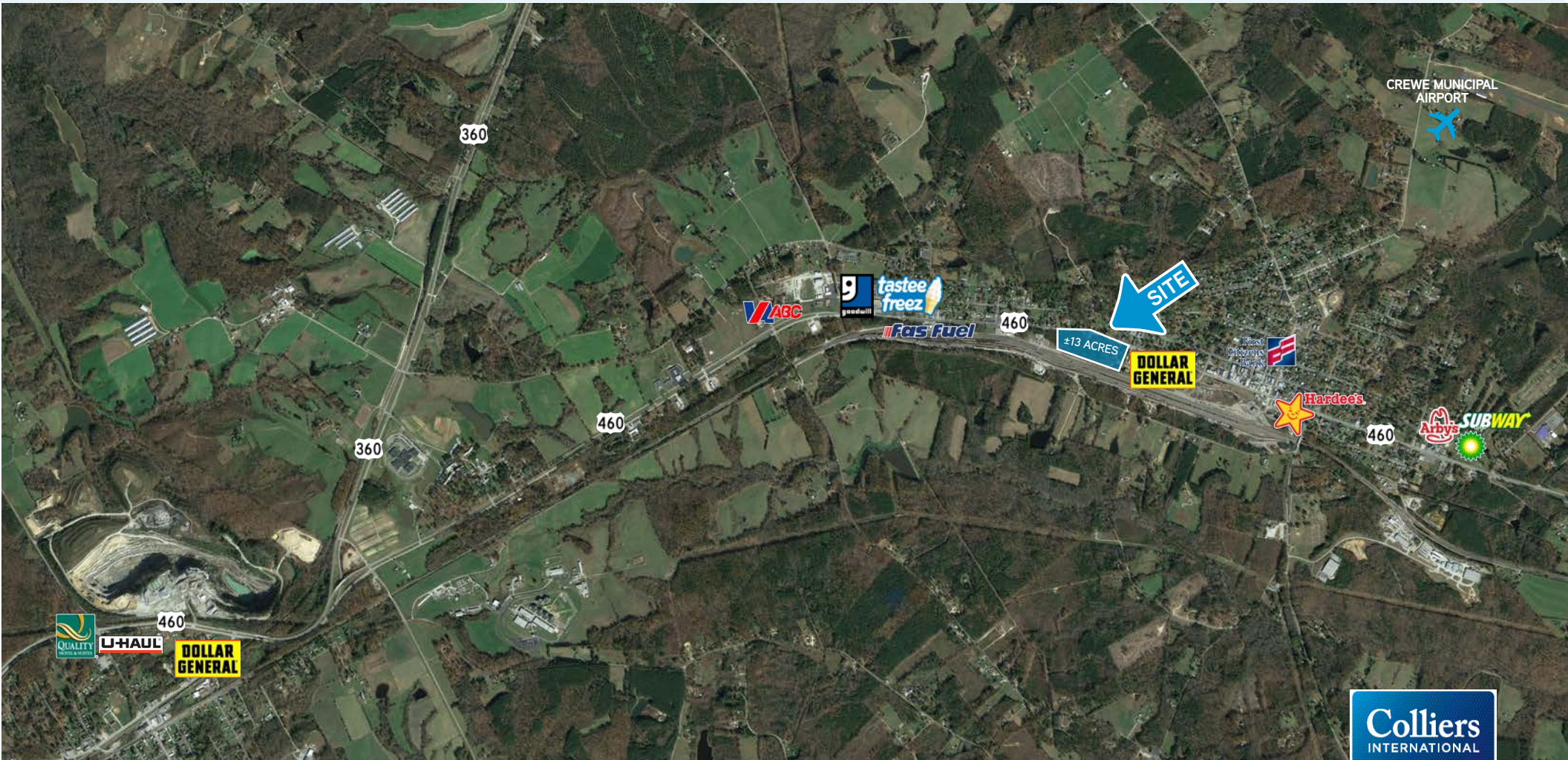
FOR SALE > LAND

±13 Acres (subdividable)

Crewe, VA 23930

CHRISTOPHER E. TODD | 757 752 1095 | christopher.todd@colliers.com

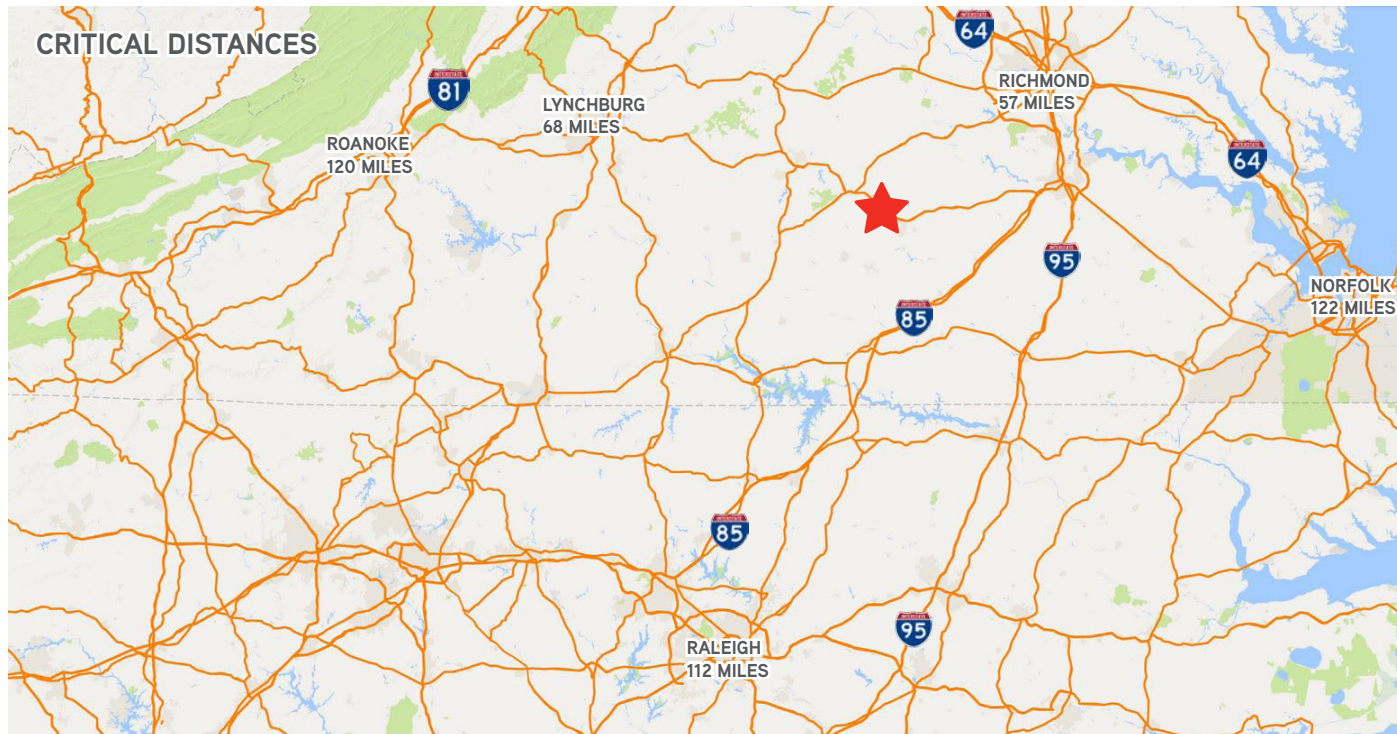
KEN CAMPBELL | 804 591 2437 | ken.campbell@colliers.com



FOR SALE > ±13 Acres (subdividable)

PROPERTY FEATURES

- > Centrally located between Norfolk and Roanoke
- > Immediately adjacent to Norfolk Southern Rail yard
- > Excellent accessibility from the Port of VA to Points West
- > Easily subdividable



The information contained herein was obtained from sources, believed reliable, however, Colliers International makes no guarantees, warranties or representations as to the completeness or accuracy thereof. The presentation of this property is submitted subject to errors, omissions, change of price or conditions prior to sale or lease, or withdrawal without notice. File name: CreweVA_13acres_Sale rev 7-11-18

CONTACTS:

CHRISTOPHER E. TODD

757 752 1095

christopher.todd@colliers.com

CHRISTOPHER E. TODD

757 752 1095

christopher.todd@colliers.com

COLLIERS INTERNATIONAL
500 E. Main Street, Suite 808
Norfolk, VA 23510
757 441 3636
colliers.com/norfolk

